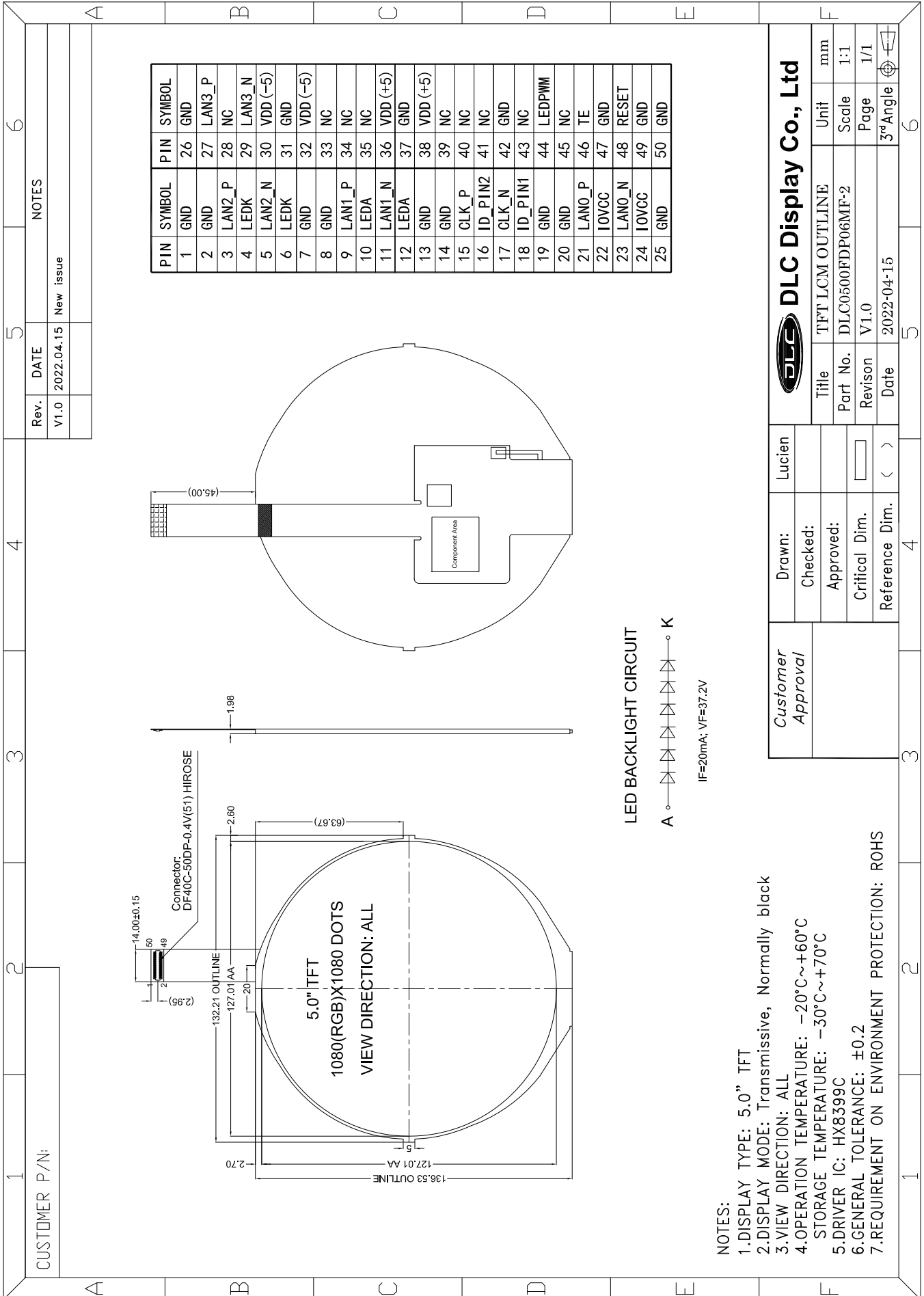


Outline Drawing



- NOTES:
- 1.DISPLAY TYPE: 5.0" TFT
 - 2.DISPLAY MODE: Transmissive, Normally black
 - 3.VIEW DIRECTION: ALL
 - 4.OPERATION TEMPERATURE: -20°C~+60°C
 - 5.STORAGE TEMPERATURE: -30°C~+70°C
 - 6.DRIVER IC: HX8399C
 - 7.GENERAL TOLERANCE: ±0.2
 - 7.REQUIREMENT ON ENVIRONMENT PROTECTION: ROHS

Customer Approval	Drawn:	Lucien	DLC Display Co., Ltd
	Checked:		
	Approved:		TFT LCM OUTLINE
	Critical Dim.		Unit
	Reference Dim.	< >	Scale
			Page
			3 rd Angle
			6