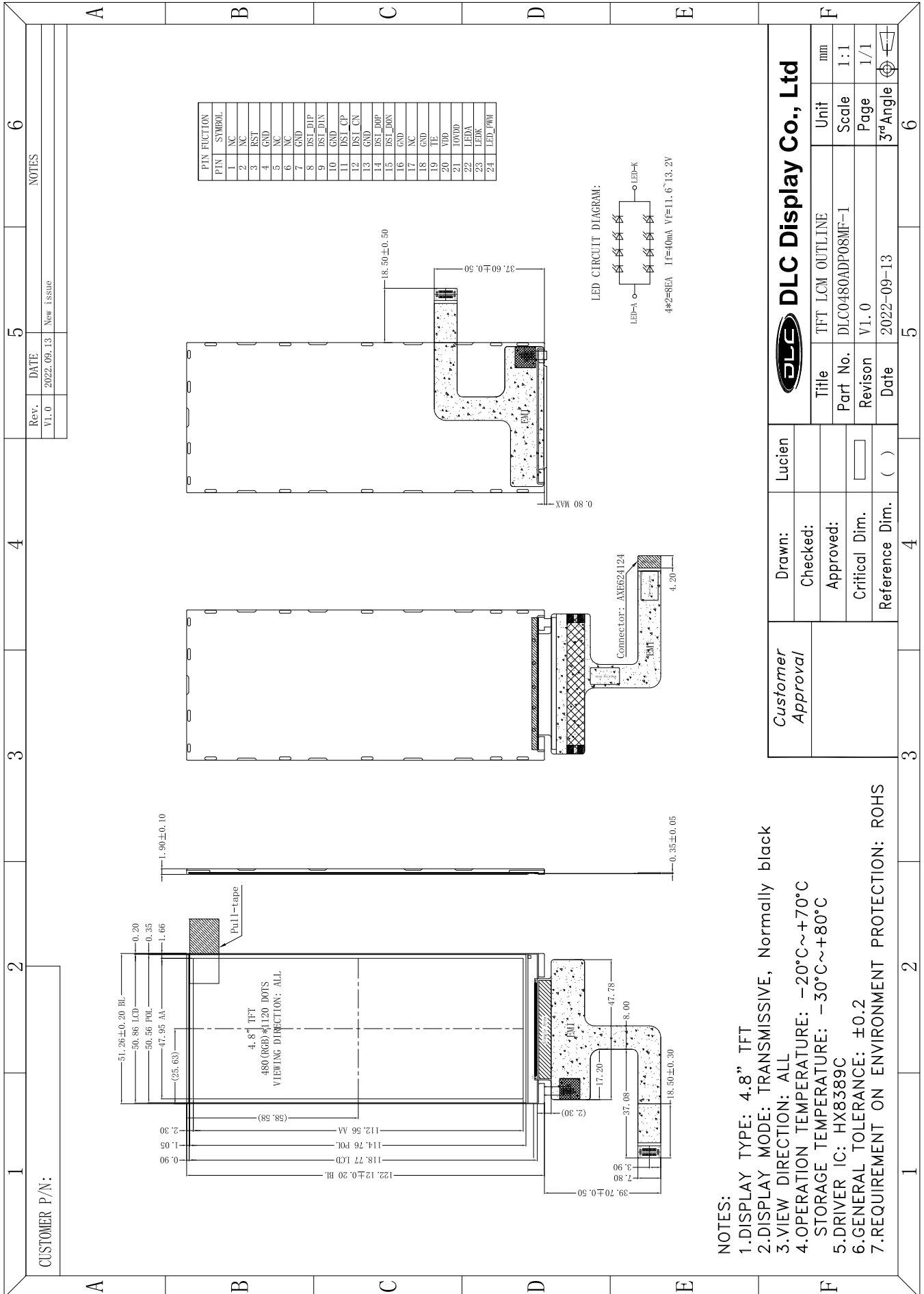




Outline Drawing



- NOTES:**
- 1.DISPLAY TYPE: 4.8" TFT
  - 2.DISPLAY MODE: TRANSMISSIVE, Normally black
  - 3.VIEW DIRECTION: ALL
  - 4.OPERATION TEMPERATURE: -20°C~+70°C
  - 5.STORAGE TEMPERATURE: -30°C~+80°C
  - 6.DRIVER IC: HX8389C
  - 7.GENERAL TOLERANCE: ±0.2
  - 7.REQUIREMENT ON ENVIRONMENT PROTECTION: ROHS