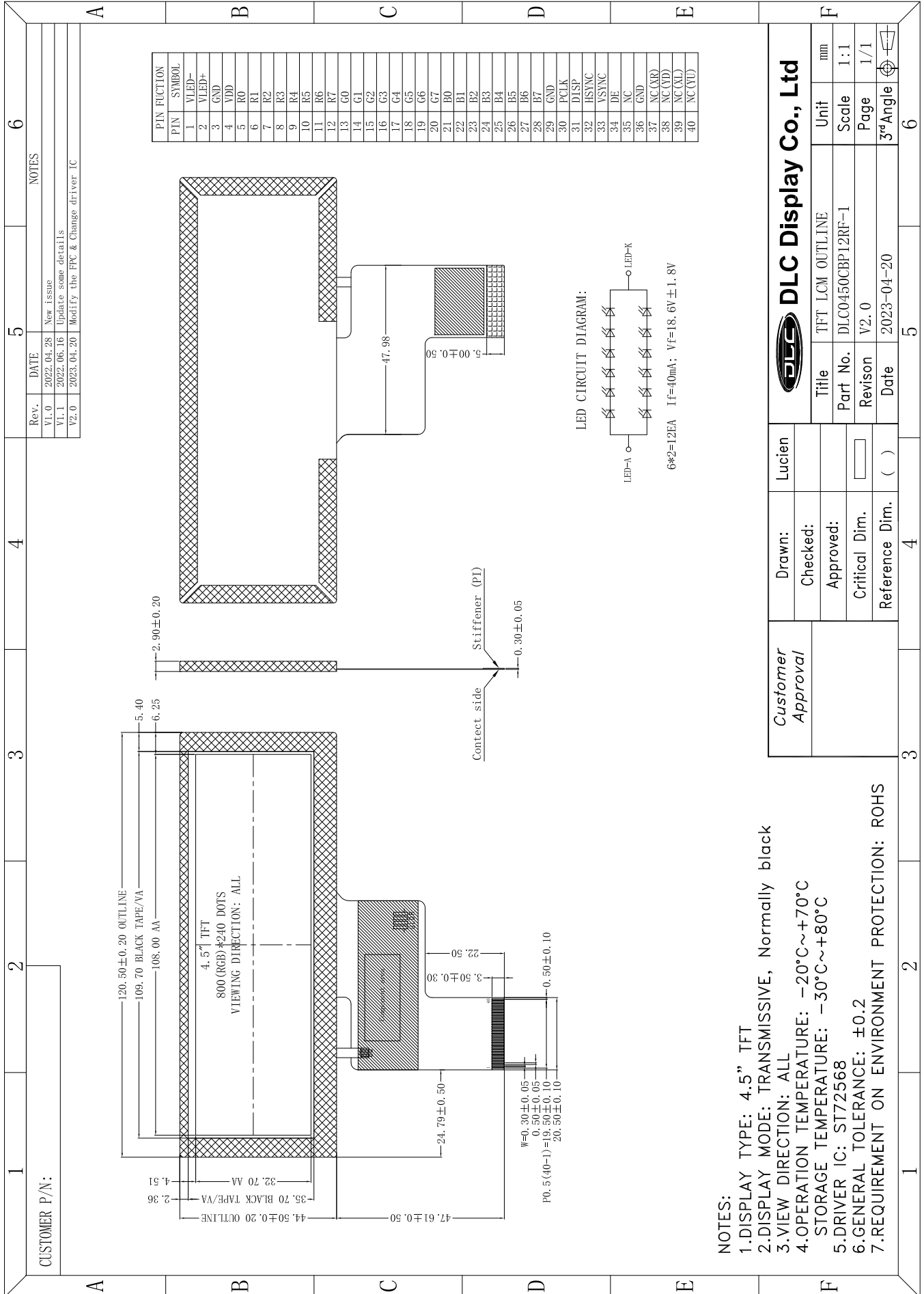


Outline Drawing



- NOTES:**
- 1.DISPLAY TYPE: 4.5" TFT
  - 2.DISPLAY MODE: TRANSMISSIVE, Normally black
  - 3.VIEW DIRECTION: ALL
  - 4.OPERATION TEMPERATURE: -20°C~+70°C  
STORAGE TEMPERATURE: -30°C~+80°C
  - 5.DRIVER IC: ST72568
  - 6.GENERAL TOLERANCE: ±0.2
  - 7.REQUIREMENT ON ENVIRONMENT PROTECTION: ROHS

Customer Approval	Drawn:	Lucien
	Checked:	
Approval	Approved:	
	Critical Dim.	
	Reference Dim.	( )
Title		TFT LCM OUTLINE
Part No.		DLC0450CBP12RF-1
Revision		V2.0
Date		2023-04-20
Unit	mm	
Scale	1:1	
Page	1/1	
3rd Angle		