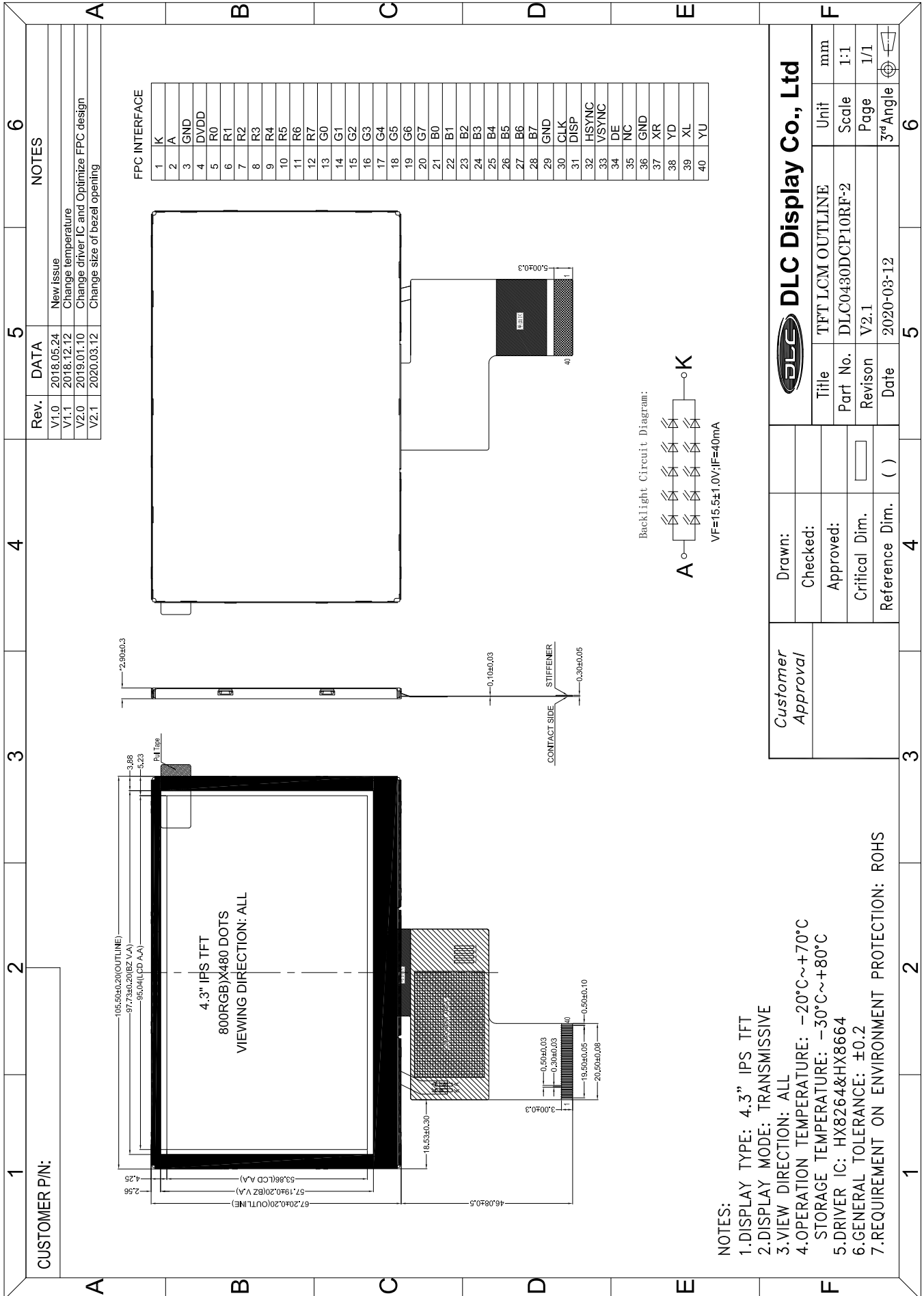




Outline Drawing



- NOTES:**
- 1.DISPLAY TYPE: 4.3" IPS TFT
 - 2.DISPLAY MODE: TRANSMISSIVE
 - 3.VIEW DIRECTION: ALL
 - 4.OPERATION TEMPERATURE: -20°C~+70°C
STORAGE TEMPERATURE: -30°C~+80°C
 - 5.DRIVER IC: HX8264&HX8664
 - 6.GENERAL TOLERANCE: ±0.2
 - 7.REQUIREMENT ON ENVIRONMENT PROTECTION: ROHS

Customer Approval	Drawn:		DLC Display Co., Ltd	Title	TFT LCM OUTLINE	Unit	mm
	Checked:			Part No.	DLC0430DCP10RF-2	Scale	1:1
	Approved:		Revision	V2.1	Page	1/1	
	Critical Dim.		Date	2020-03-12	3 rd Angle		
	Reference Dim.	()					6

Rev. DATA

V1.0	2018.05.24	New issue
V1.1	2018.12.12	Change temperature
V2.0	2019.01.10	Change driver IC and Optimize FPC design
V2.1	2020.03.12	Change size of bezel opening

NOTES