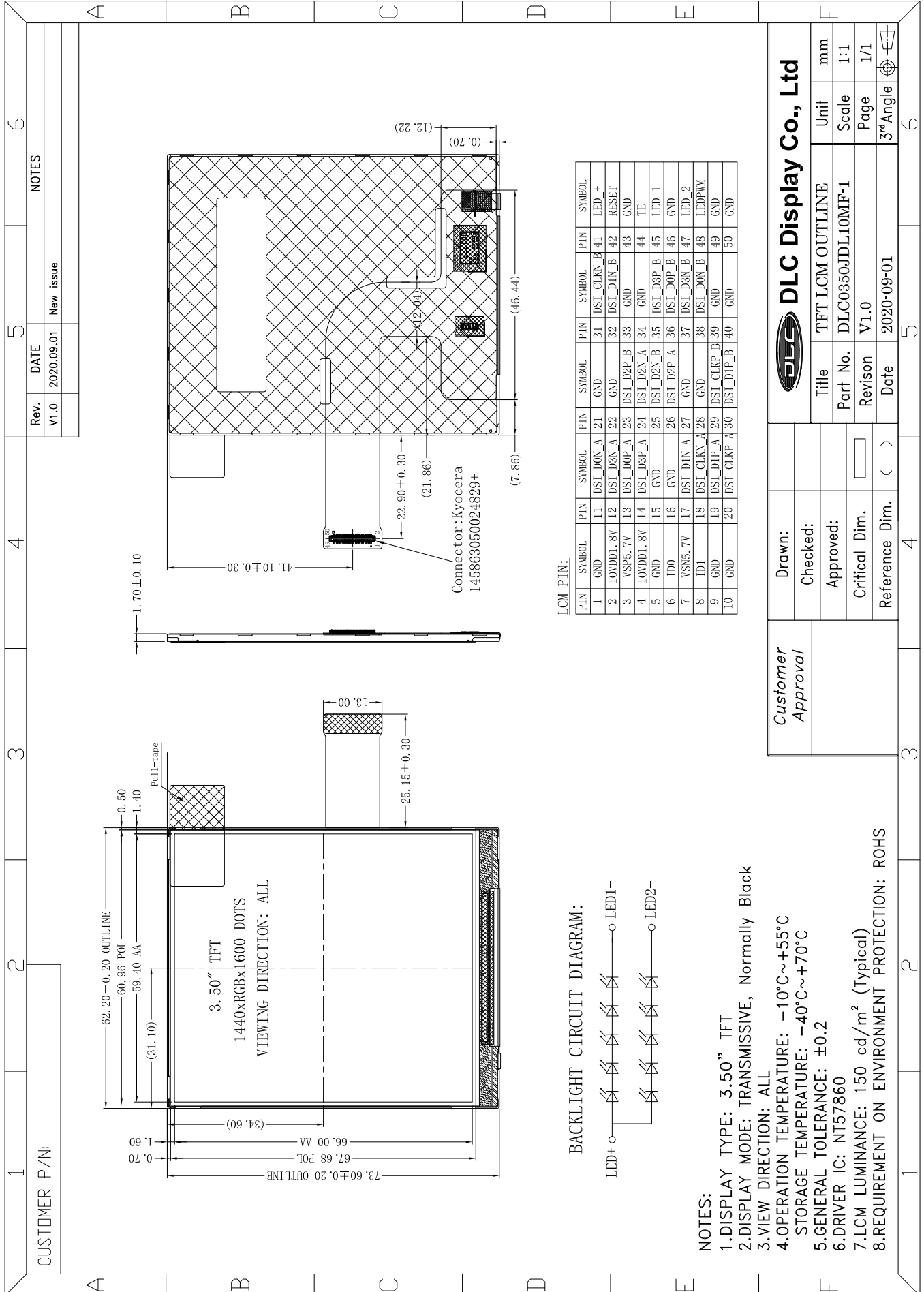


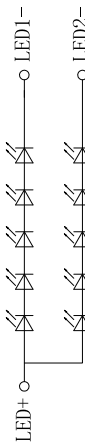
Outline Drawing



LCM PIN:

PIN	SYMBOL	PIN	SYMBOL	PIN	SYMBOL	PIN	SYMBOL	PIN	SYMBOL
1	GND	11	DSI_D0N_A	21	GND	31	DSI_CLKN_B	41	LED_+
2	IOWDD1_8V	12	DSI_D3N_A	22	GND	32	DSI_D1N_B	42	RESET
3	VSP5_7V	13	DSI_D0P_A	23	DSI_D2P_B	33	GND	43	GND
4	IOWDD1_8V	14	DSI_D3P_A	24	DSI_D2N_A	34	GND	44	TE
5	GND	15	GND	25	DSI_D2N_B	35	DSI_D3P_B	45	LED_1-
6	ID0	16	GND	26	DSI_D2P_A	36	DSI_D0P_B	46	GND
7	VSN5_7V	17	DSI_D1N_A	27	GND	37	DSI_D3N_B	47	LED_2-
8	ID1	18	DSI_CLKN_A	28	GND	38	DSI_D0N_B	48	LEDPWM
9	GND	19	DSI_D1P_A	29	DSI_CLKP_B	39	GND	49	GND
10	GND	20	DSI_CLKP_A	30	DSI_D1P_B	40	GND	50	GND

BACKLIGHT CIRCUIT DIAGRAM:



NOTES:

- 1.DISPLAY TYPE: 3.50" TFT
- 2.DISPLAY MODE: TRANSMISSIVE, Normally Black
- 3.VIEW DIRECTION: ALL
- 4.OPERATION TEMPERATURE: -10°C~+55°C
- 5.STORAGE TEMPERATURE: -40°C~+70°C
- 6.GENERAL TOLERANCE: ±0.2
- 6.DRIVER IC: NT57860
- 7.LCM LUMINANCE: 150 cd/m² (Typical)
- 8.REQUIREMENT ON ENVIRONMENT PROTECTION: ROHS

Customer Approval	Drawn:	DLC Display Co., Ltd Title: TFT LCM OUTLINE Part No. DLC0350JDL10MF-1 Revision: V1.0 Date: 2020-09-01		
	Checked:			
	Approved:			
	Critical Dim.			
Reference Dim.	()	Unit	mm	
		Scale	1:1	
		Page	1/1	
		3 rd Angle	☉	