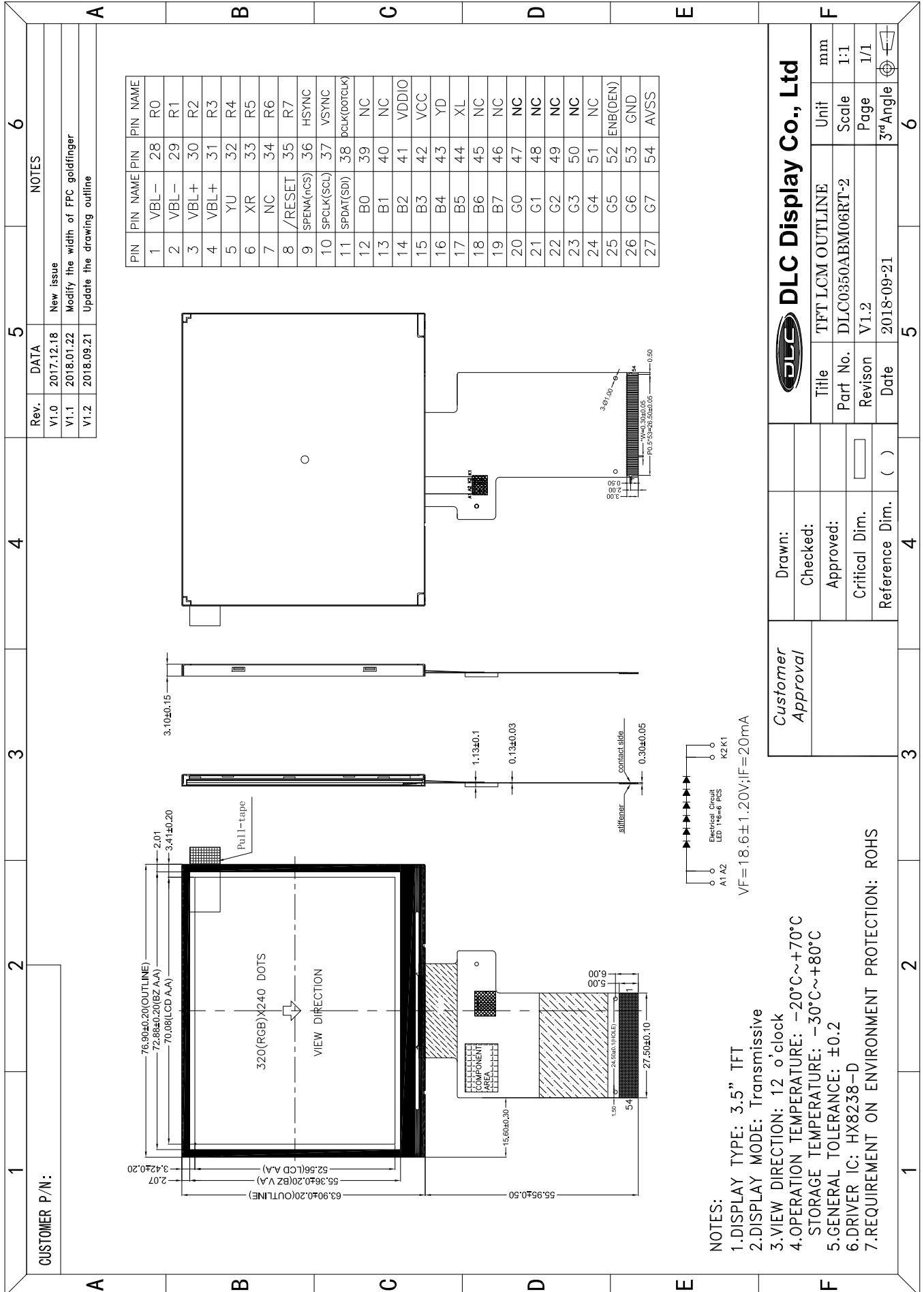


Outline Drawing



- NOTES:
- 1.DISPLAY TYPE: 3.5" TFT
 - 2.DISPLAY MODE: Transmissive
 - 3.VIEW DIRECTION: 12 o'clock
 - 4.OPERATION TEMPERATURE: -20°C~+70°C
 - STORAGE TEMPERATURE: -30°C~+80°C
 - 5.GENERAL TOLERANCE: ±0.2
 - 6.DRIVER IC: HX8238-D
 - 7.REQUIREMENT ON ENVIRONMENT PROTECTION: ROHS



Customer Approval		DLC Display Co., Ltd	
Drawn:		Title	TFT LCM OUTLINE
Checked:		Part No.	DLC0350ABM06RT-2
Approved:		Revision	V1.2
Critical Dim.		Date	2018-09-21
Reference Dim.	()	Unit	mm
		Scale	1:1
		Page	1/1
		3 rd Angle	