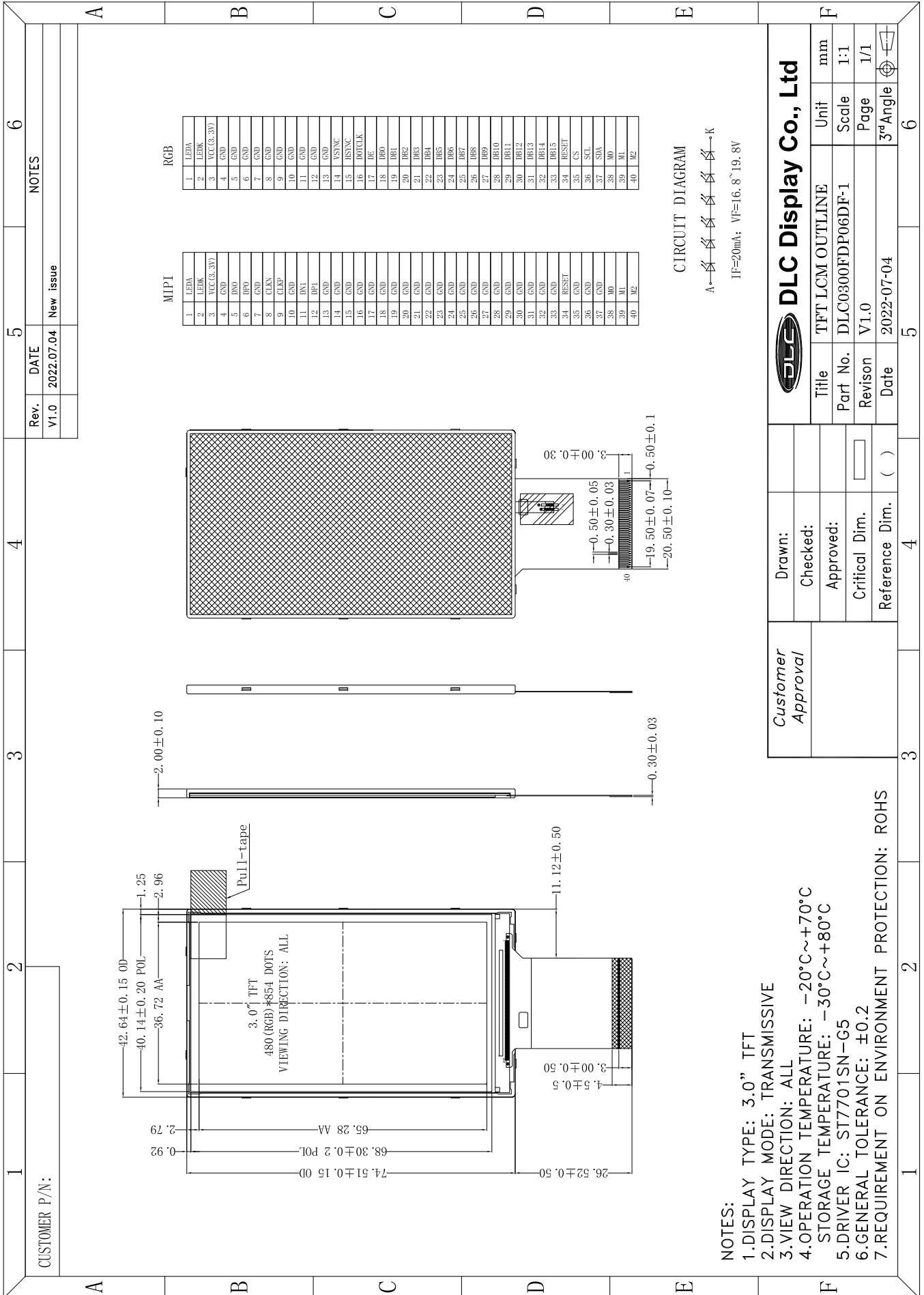


Outline Drawing



NOTES:
 1.DISPLAY TYPE: 3.0" TFT
 2.DISPLAY MODE: TRANSMISSIVE
 3.VIEW DIRECTION: ALL
 4.OPERATION TEMPERATURE: -20°C~+70°C
 STORAGE TEMPERATURE: -30°C~+80°C
 5.DRIVER IC: ST7701SN-G5
 6.GENERAL TOLERANCE: ±0.2
 7.REQUIREMENT ON ENVIRONMENT PROTECTION: ROHS

Customer Approval	Drawn:				
	Checked:				
	Approved:				
	Critical Dim.				
	Reference Dim.	()			
DLC Display Co., Ltd		Title	TFT LCM OUTLINE	Unit	mm
		Part No.	DLC0300FDP06DF-1	Scale	1:1
		Revision	V1.0	Page	1/1
		Date	2022-07-04	3rd Angle	