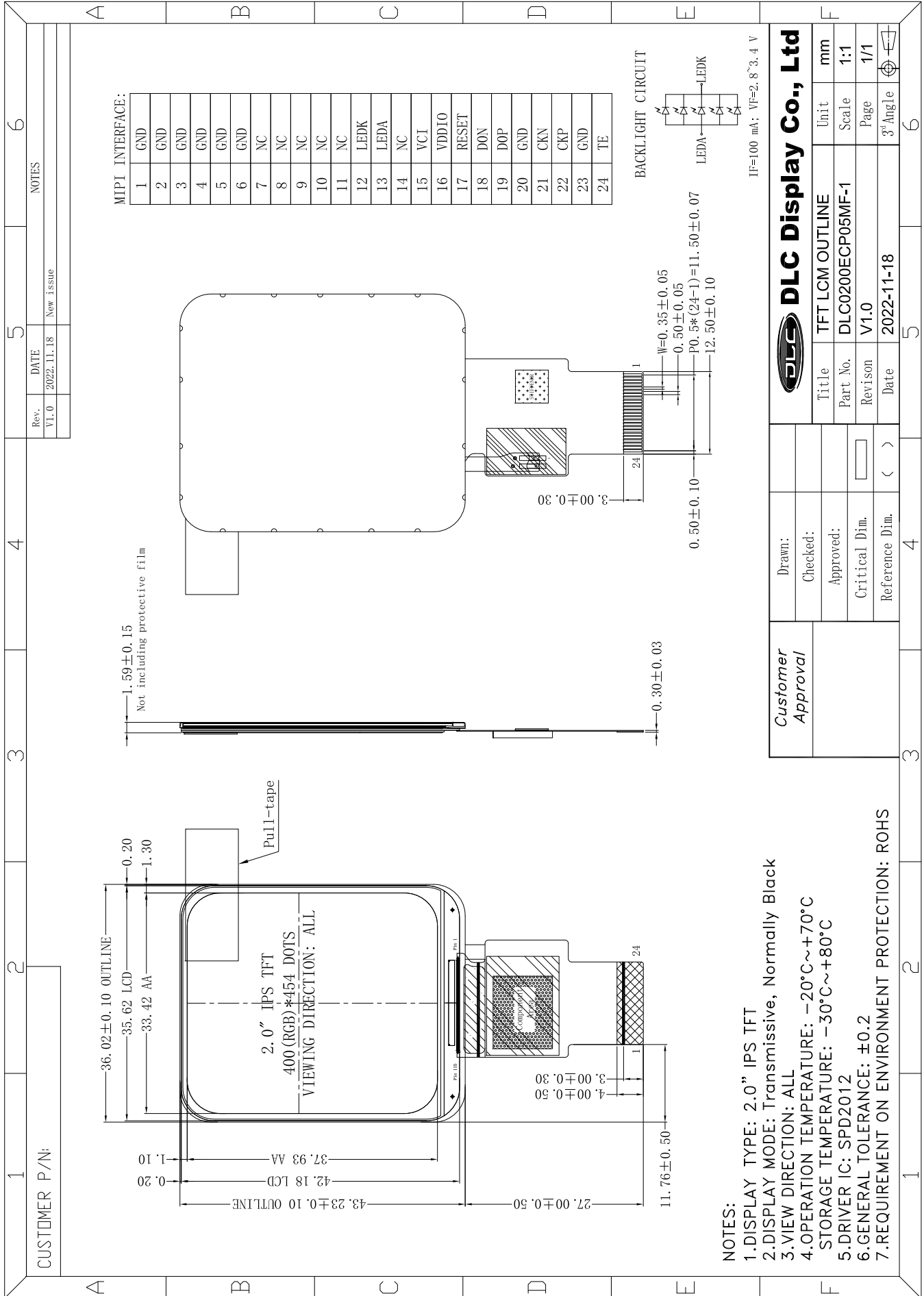


Outline Drawing



- NOTES:**
- 1.DISPLAY TYPE: 2.0" IPS TFT
 - 2.DISPLAY MODE: Transmissive, Normally Black
 - 3.VIEW DIRECTION: ALL
 - 4.OPERATION TEMPERATURE: -20°C~+70°C
 - 5.DRIVER IC: SPD2012
 - 6.GENERAL TOLERANCE: ±0.2
 - 7.REQUIREMENT ON ENVIRONMENT PROTECTION: ROHS