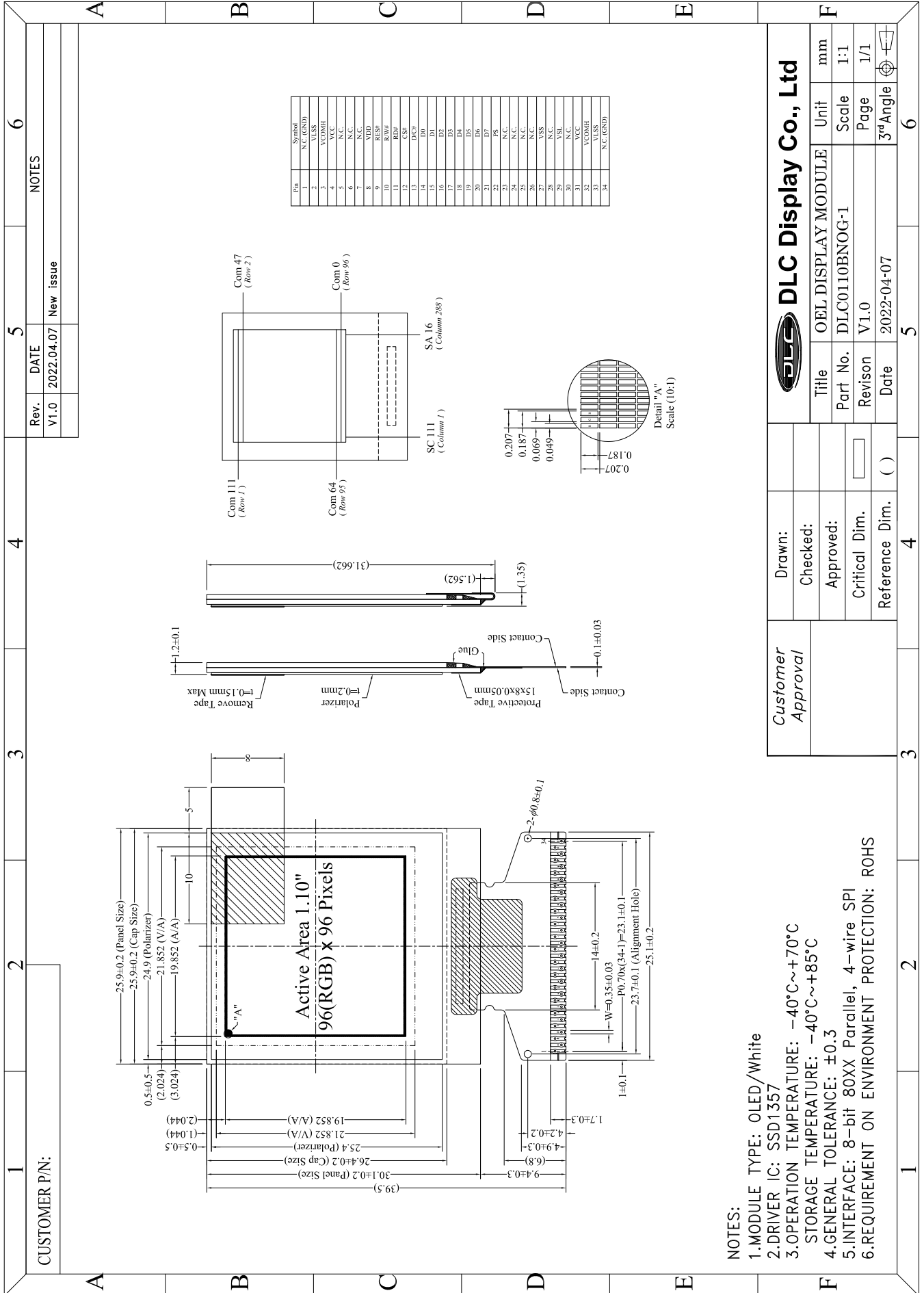


Outline Drawing



- NOTES:**
1. MODULE TYPE: OLED/White
 2. DRIVER IC: SSD1357
 3. OPERATION TEMPERATURE: -40°C~+70°C
STORAGE TEMPERATURE: -40°C~+85°C
 4. GENERAL TOLERANCE: ±0.3
 5. INTERFACE: 8-bit 80XX Parallel, 4-wire SPI
 6. REQUIREMENT ON ENVIRONMENT PROTECTION: ROHS