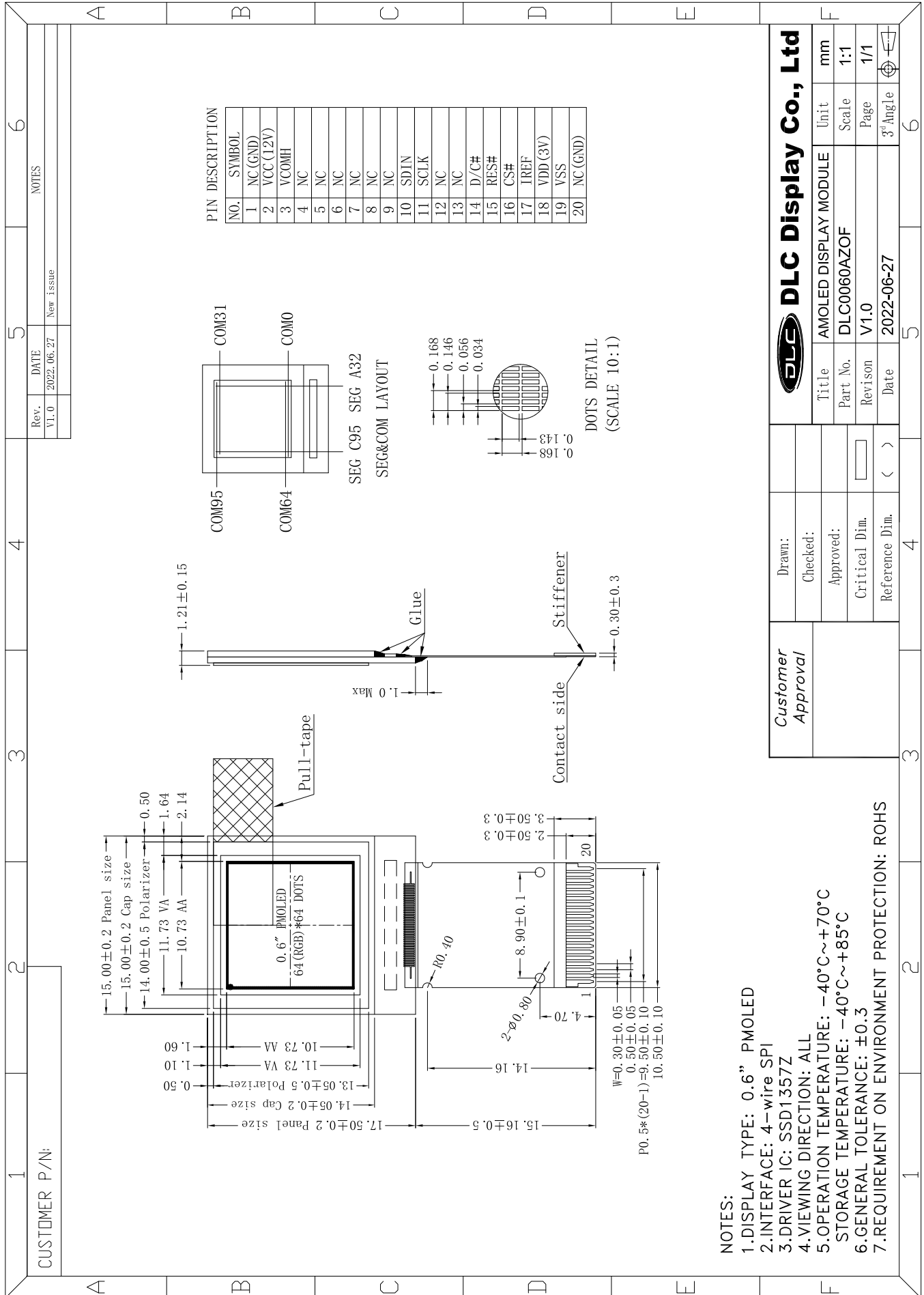


Outline Drawing



NO.	SYMBOL
1	NC (GND)
2	VCC (12V)
3	VCOMH
4	NC
5	NC
6	NC
7	NC
8	NC
9	NC
10	SDIN
11	SCLK
12	NC
13	NC
14	D/C#
15	RES#
16	CS#
17	REF
18	VDD (3V)
19	VSS
20	NC (GND)

Customer Approval	Drawn:		
	Checked:		
	Approved:		
	Critical Dim.		
Reference Dim.	()		
DLC Display Co., Ltd			
Title	AMOLED DISPLAY MODULE	Unit	mm
Part No.	DLC0060AZOF	Scale	1:1
Revision	V1.0	Page	1/1
Date	2022-06-27	3 rd Angle	

- NOTES:
- 1.DISPLAY TYPE: 0.6" PMOLED
 - 2.INTERFACE: 4-wire SPI
 - 3.DRIVER IC: SSD1357Z
 - 4.VIEWING DIRECTION: ALL
 - 5.OPERATION TEMPERATURE: -40°C ~ +70°C
 - 6.STORAGE TEMPERATURE: -40°C ~ +85°C
 - 7.REQUIREMENT ON ENVIRONMENT PROTECTION: ROHS