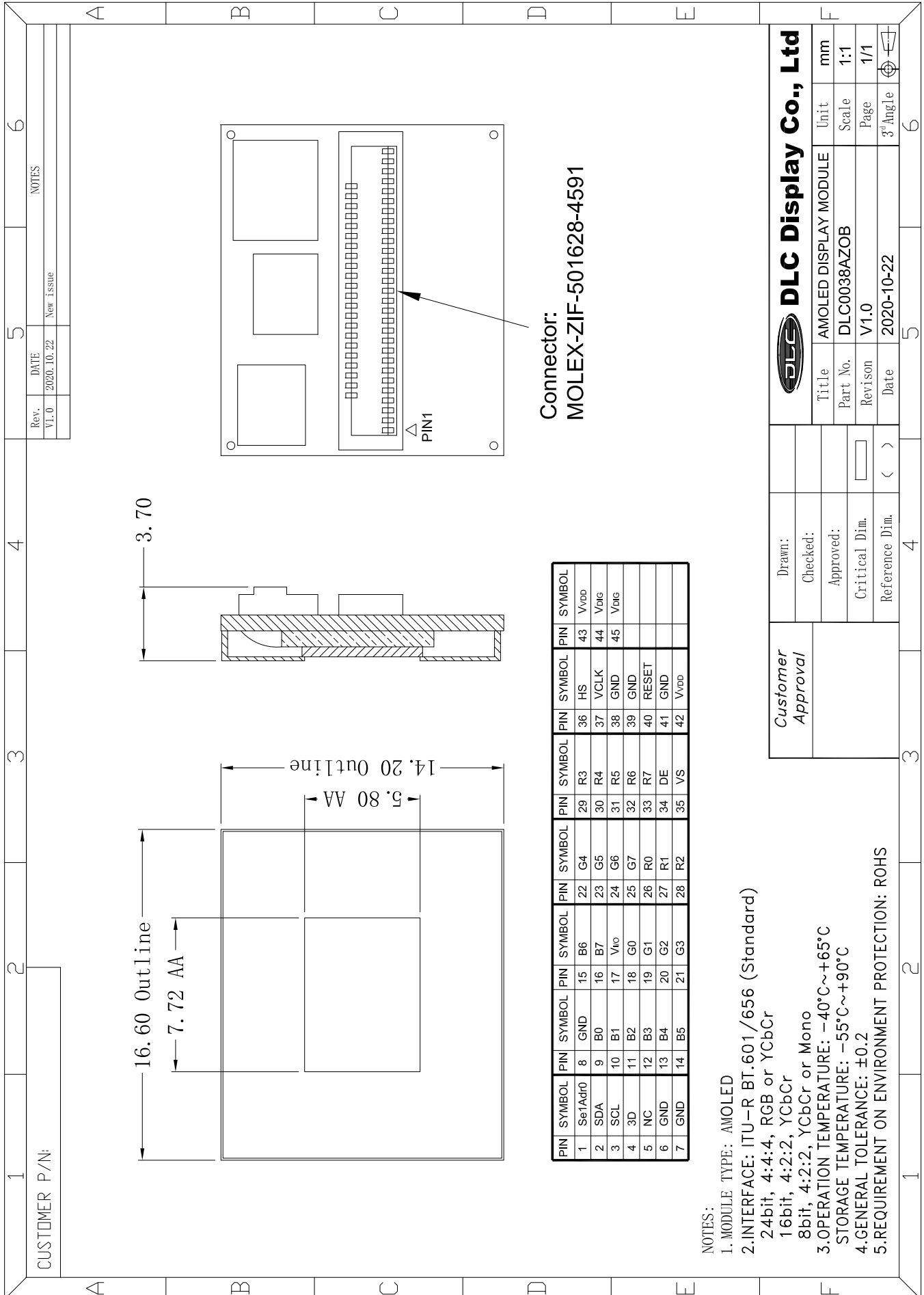


Outline Drawing



Rev.	DATE	NOTES
V1.0	2020.10.22	New Issue

PIN	SYMBOL	PIN	SYMBOL	PIN	SYMBOL	PIN	SYMBOL	PIN	SYMBOL	PIN	SYMBOL
1	Se1Adr0	8	GND	15	B6	22	G4	29	R3	36	HS
2	SDA	9	B0	16	B7	23	G5	30	R4	37	VCLK
3	SCL	10	B1	17	Vio	24	G6	31	R5	38	GND
4	3D	11	B2	18	G0	25	G7	32	R6	39	GND
5	NC	12	B3	19	G1	26	R0	33	R7	40	RESET
6	GND	13	B4	20	G2	27	R1	34	DE	41	GND
7	GND	14	B5	21	G3	28	R2	35	VS	42	Vvdd
										43	Vvdd
										44	Vvdc
										45	Vvdc

- NOTES:
1. MODULE TYPE: AMOLED
  2. INTERFACE: ITU-R BT.601/656 (Standard)  
24bit, 4:4:4, RGB or YCbCr  
16bit, 4:2:2, YCbCr  
8bit, 4:2:2, YCbCr or Mono
  3. OPERATION TEMPERATURE: -40°C~+65°C  
STORAGE TEMPERATURE: -55°C~+90°C
  4. GENERAL TOLERANCE: ±0.2
  5. REQUIREMENT ON ENVIRONMENT PROTECTION: ROHS

<b>DLC Display Co., Ltd</b>		Unit	mm
Title	AMOLED DISPLAY MODULE	Scale	1:1
Part No.	DLC0038AZOB	Page	1/1
Revision	V1.0	Date	2020-10-22
Reference Dim.	< >	3rd Angle	6

Customer Approval

Drawn:  
Checked:  
Approved:  
Critical Dim.  
Reference Dim.