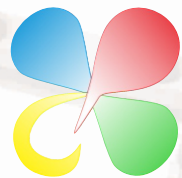




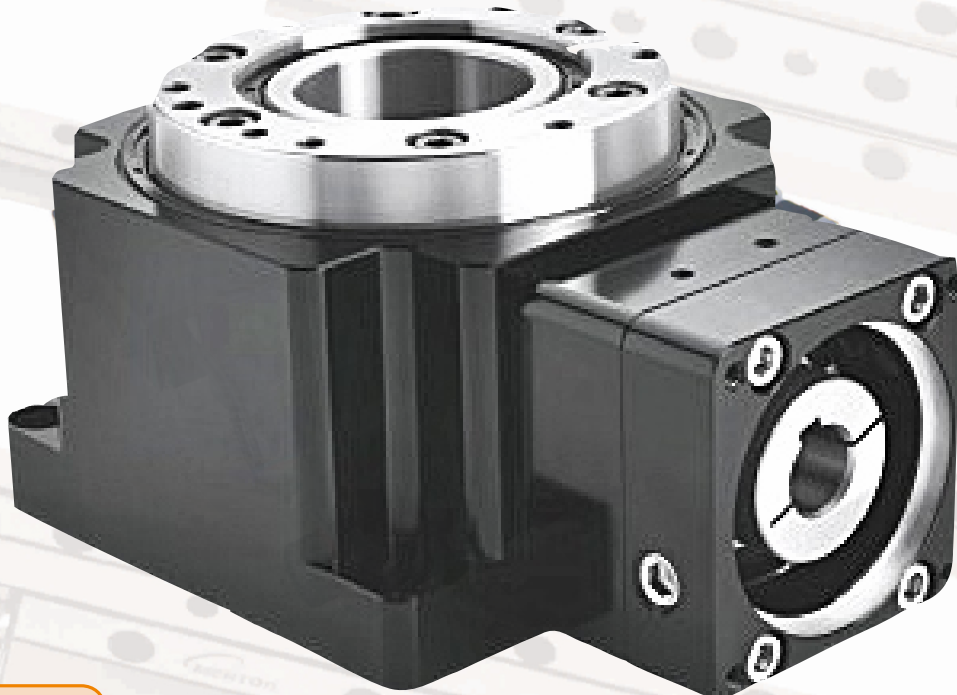
**24**  
HOURS  
ONLINE

*SPECIALIZING IN CUSTOMIZATION OF AUTOMATED ALIGNMENT PLATFORM  
ARRIVING AT THE SCENE WITHIN 24 HOURS TO SOLVE THE PROBLEM*



东莞市诚鲲五金电子科技有限公司

**C&K mechatronics**



[www.dgchengkun.com](http://www.dgchengkun.com)







诚  
鲲  
科  
技  
大  
厦

东莞市诚鲲五金电子科技有限公司







# Enterprise Profile

Dongguan C&K Mechatronix Co., LTD, founded in 2017, locate in Qiaotou Town, Dongguan City, Guangdong Province. We are a national high-tech enterprise integrating the R&D, production, sales and focus on the R&D of the automated accessories. Our products mainly include precision motorized/manual alignment platform, actuator, linear motor, guide rail, arc angle measurement slide table, etc which are widely use in precision automatic assembling equipment industry, 3C products, electric vehicles, medical equipment and other industries. Our team members, with more than ten years of experience in precision hardware manufacturing, serve customers' customized needs of various hardware with "one-solution" manufacturing. Our main customers are famous home and foreign companies such as Panasonic, Yamaichi Electric, Zhongguang Hi-Tech, Alpa Robots.

In 2018, We cooperate with Korea Mentor in technology, information sharing, localized manufacturing. We improve our competitiveness with high efficiency, high precision and low cost. We ensure that every product has information trace-ability through digital workshop and product liability management.

In 2019, we are the first to put forward the "24H on site to solve problems(China Only)" service which make the use of automated transmission become worry-less.

We always implement "provide quality products and services, keep improving, ensure customer satisfaction and trust" quality policy, adhere to "market-oriented, customer-concentric" business philosophy to meet customer needs. We will take all our efforts to make C&K become customers' trust and preferred brand.





# CONTENTS

## 目录

### 01 JHRS/JHRT 中空旋转平台

JHRS / JHRT Hollow Rotary Platform

### 14 JHR-RAT 直角中空旋转平台

JHR-RAT Right Angle Hollow Rotary Platform

### 16 JHR-RAS 直角中空旋转平台

JHR-RAS Right Angle Hollow Rotary Platform

### 18 JHR-WS 海波齿中空旋转平台

JHR-WS Hollow Rotary Platform with Sea Wave Teeth

### 22 5Z 微型旋转轴

Micro Rotary Shaft

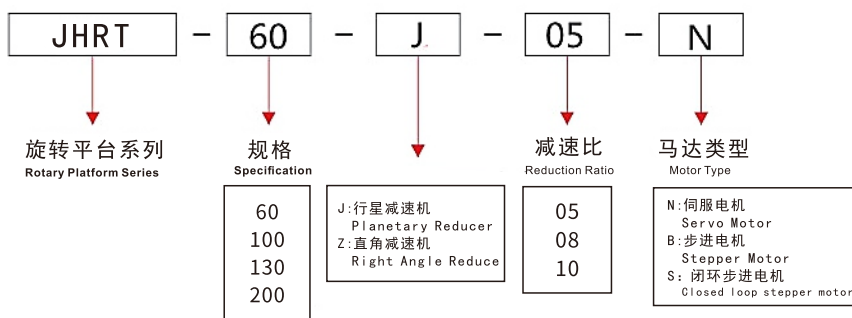


# JHRT 中空旋转平台

## Hollow Rotary Platform

### 型号识别

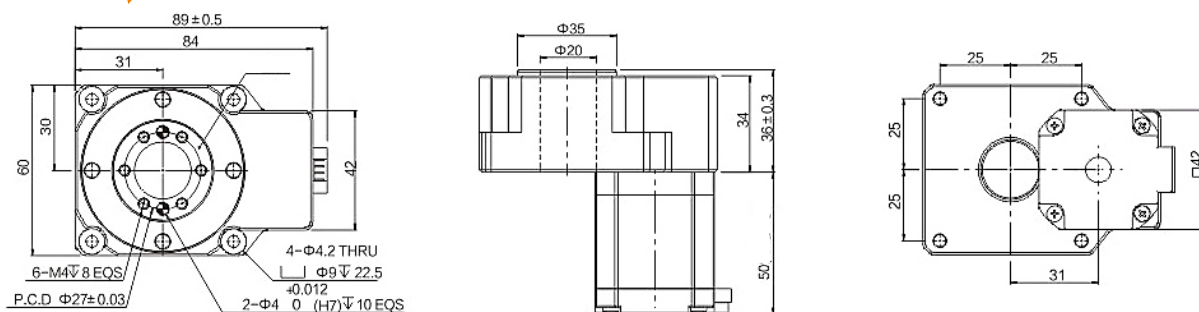
### Model Identification



### 技术参数 Technical Parameter

产品型号 Product Model	单位 Unit	JHRT-60	JHRT-100	JHRT-130	JHRT-200
减速比 Reduction Ratio	I	5	8	10	10
匹配伺服马达 Matching Servo Motor	w	100	400	400	750
轴承结构 Structure of Bearing		深沟滚珠+止推滚珠轴承 Deep Groove Ball + Thrust Ball Bearing	圆锥滚子轴承 Tapered Roller Bearings	圆锥滚子轴承 Tapered Roller Bearings	圆锥滚子轴承 Tapered Roller Bearings
容许转矩 Allowable Torque	N.m	5	48	50	90
容许惯性力矩 Allowable Moment of Inertia	N.m	9	76	85	145
容许盘面输出转速 Allowable Disk Output Speed	r/min	200(盘面 Disk)	200(盘面 Disk)	200(盘面 Disk)	200(盘面 Disk)
容许轴向负载 Allowable Axial Load	N	200	900	1800	3700
重复定位精度 Bi Repeatability	arc-sec	±5	±5	±5	±5
定位精度 Positioning Accuracy	arc-min	±0.5	±0.5	±0.5	±0.5
旋转平台平面振幅 Rotating Platform Plane Amplitude	mm	±0.005	±0.005	±0.005	±0.005
旋转平台同心度 Concentricity of Rotating Platform	mm	±0.005	±0.005	±0.005	±0.005
盘面与底座平行度 Parallelism Between Plate and Base	mm	±0.01	±0.01	±0.01	±0.01
精度寿命 Accuracy Life	h	25000	25000	25000	25000
防护等级 Protection Level	IP	50	50	50	50
重量 Weight	Kg	0.74/0.92	2.76	4.56	12

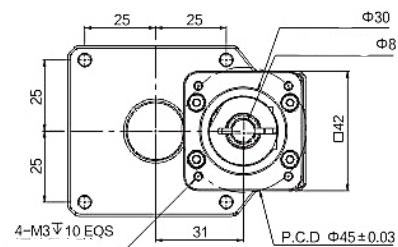
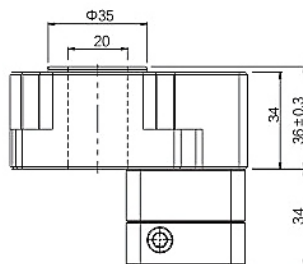
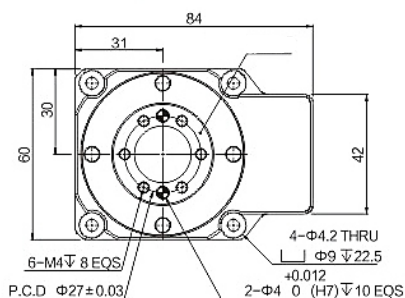
### JHRT-60-05-B



\* 以上技术参数仅供参考，实际根据客户提供的数据，会出具相应的技术参数及尺寸  
The above technical parameters are for reference only. According to the data provided by the customer, the corresponding technical parameters and dimensions will be issued.

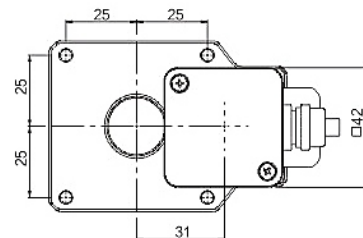
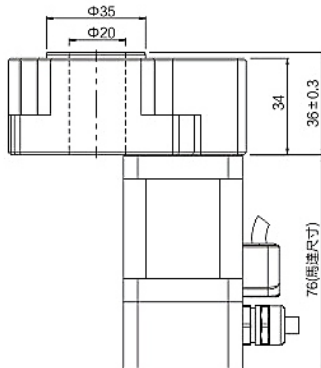
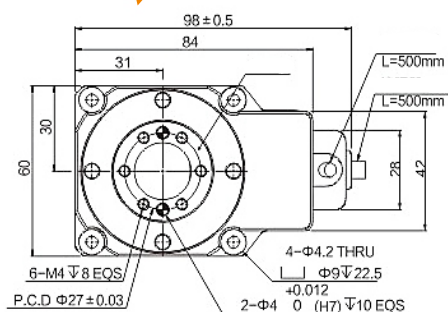


JHRT -60-05-N professional supplier of industrial automation technology solutions

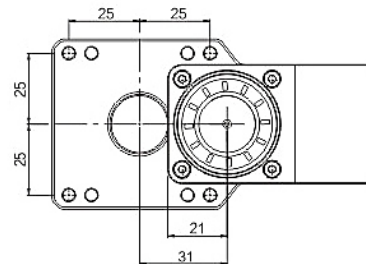
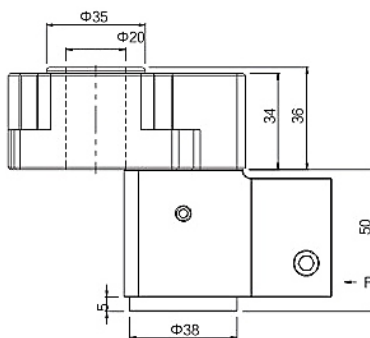
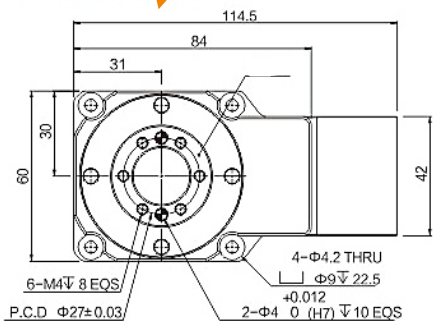


N:伺服 Servo $\Phi$ 8, PCD45, M3  
N1:伺服 Servo $\Phi$ 8, PCD46, M4  
B:步进 Stepper $\Phi$ 5, PCD43.8, M3

## JHRT -60-05-S

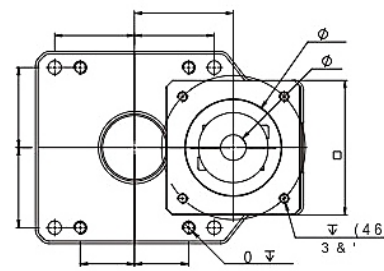
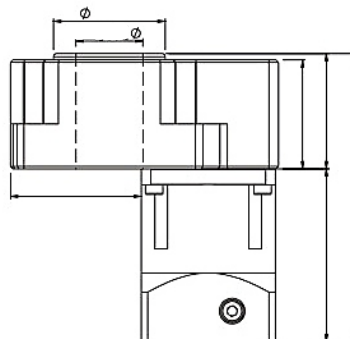
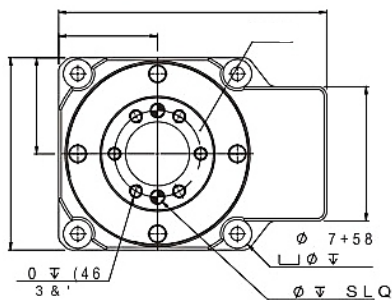


## JHRT -60-Z-05-N



N:伺服 Servo $\Phi$ 8, PCD45, M3  
N1:伺服 Servo $\Phi$ 8, PCD46, M4  
B:步进 Stepper $\Phi$ 5, PCD43.8, M3

## JHRT -60-J-25-N



N:伺服 Servo $\Phi$ 8, PCD45, M3  
N1:伺服 Servo $\Phi$ 8, PCD46, M4  
B:步进 Stepper $\Phi$ 5, PCD43.8, M3

\*以上技术参数仅供参考，实际根据客户提供的数据，会出具相应的技术参数及尺寸  
The above technical parameters are for reference only. According to the data provided by the customer, the corresponding technical parameters and dimensions will be issued.  
\*原点传感器套件: MTH 系列搭配OMRON EE-SX672.  
Origin Sensor Kit: MVTH Series with OMRON EE-SX672.

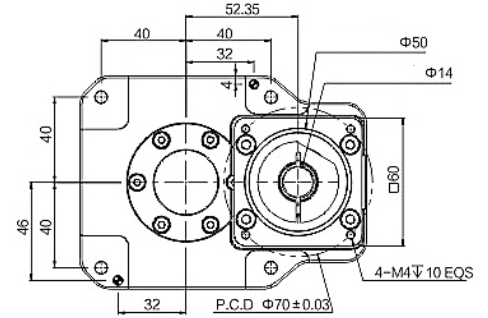
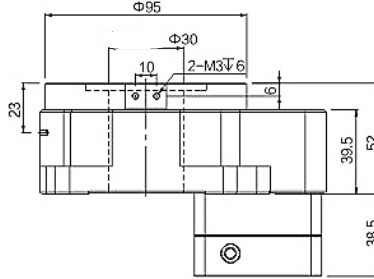
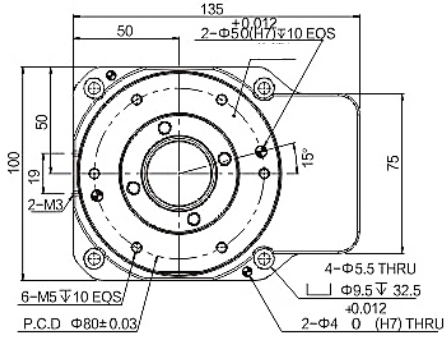


# JHRT 中空旋转平台

## Hollow Rotary Platform

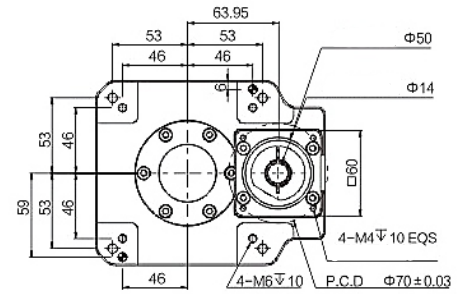
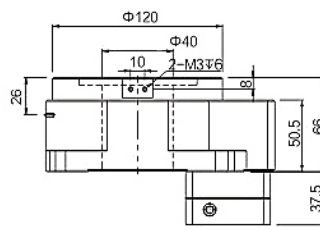
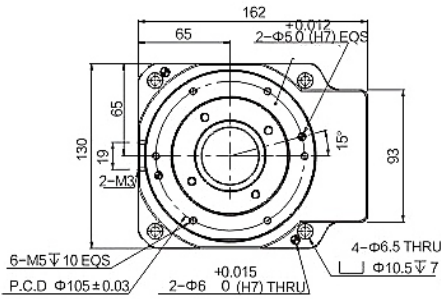
### JHRT-100-08-N

N: 伺服 Servo  $\Phi 14$ , PCD70, M4  
 N1: 伺服 Servo  $\Phi 11$ , PCD70, M4  
 N2: 伺服 Servo  $\Phi 14$ , PCD70, M5  
 B: 步进 Stepper  $\Phi 6.35$ , PCD66.67, M4  
 B1: 步进 Stepper  $\Phi 8$ , PCD66.67, M4  
 B2: 步进 Stepper  $\Phi 8$ , PCD70, M4



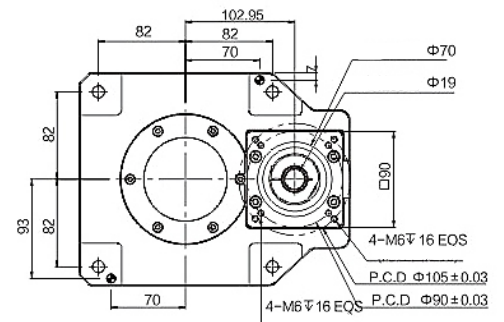
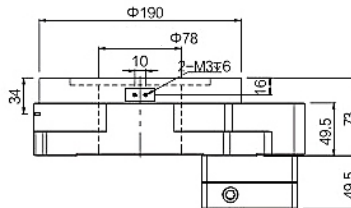
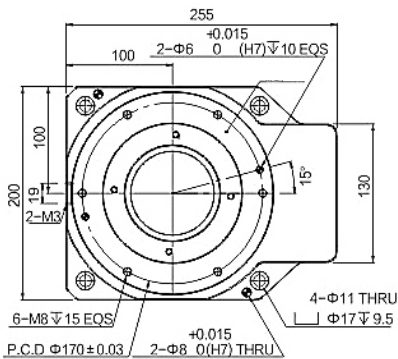
### JHRT-130-10-N

N: 伺服 Servo  $\Phi 14$ , PCD70, M4  
 N1: 伺服 Servo  $\Phi 11$ , PCD70, M4  
 N2: 伺服 Servo  $\Phi 14$ , PCD70, M5  
 B: 步进 Stepper  $\Phi 6.35$ , PCD66.67, M4  
 B1: 步进 Stepper  $\Phi 8$ , PCD66.67, M4  
 B2: 步进 Stepper  $\Phi 8$ , PCD70, M4



### JHRT-200-10-N

N: 伺服 Servo  $\Phi 19$ , PCD90, M5  
 N1: 伺服 Servo  $\Phi 19$ , PCD90, M6  
 B: 步进 Stepper  $\Phi 14$ , PCD98.4, M5  
 B1: 步进 Stepper  $\Phi 14$ , PCD98.4, M6  
 B2: 步进 Stepper  $\Phi 12.7$ , PCD98.4, M5

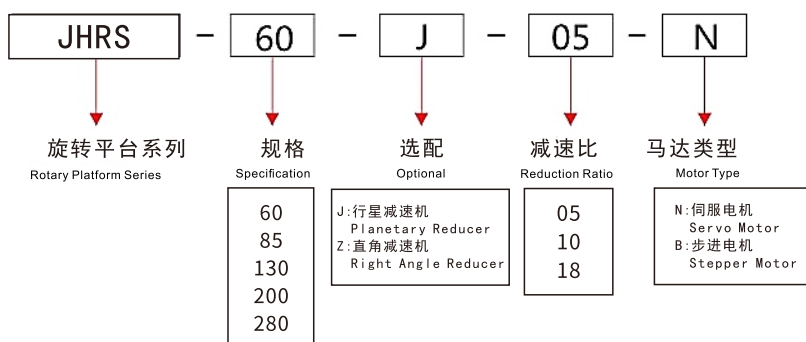


\*以上技术参数仅供参考, 实际根据客户提供的数据, 会出具相应的技术参数及尺寸  
 The above technical parameters are for reference only. According to the data provided by the customer, the corresponding technical parameters and dimensions will be issued.  
 \*原点传感器套件: MTH 系列搭配OMRON EE-SX672  
 Origin Sensor Kit: MVTH Series with OMRON EE-SX672.



# JHRS 中空旋转平台 Hollow Rotary Platform

## 型号识别 Model Identification



## 技术参数 Technical Parameter

产品型号 Product Model	单位 Unit	JHRS-60	JHRS-85	JHRS-130	JHRS-200	JHRS-280
减速比 Reduction Ratio	l	3	8	3	3	5
匹配伺服马达 Matching Servo Motor	w	100	28 Stepper	100	400	750
轴承结构 Structure of Bearing		圆锥滚子轴承 Tapered Roller Bearings	圆锥滚子轴承 Tapered Roller Bearings	圆锥滚子轴承 Tapered Roller Bearings	圆锥滚子轴承 Tapered Roller Bearings	圆锥滚子轴承 Tapered Roller Bearings
容许转矩 Allowable Torque	N.m	14	4	35	60	100
容许惯性力矩 Allowable Moment of Inertia	N.m	20	7	76	90	160
容许盘面输出转速 Allowable Disk Output Speed	r/min	600(盘面 Disk)	400(盘面 Disk)	600(盘面 Disk)	600(盘面 Disk)	400(盘面 Disk)
容许轴向负载 Allowable Axial Load	N	250	150	1000	2000	4000
重复定位精度 Bi Repeatability	arc-sec	±5	±5	±5	±5	±5
定位精度 Positioning Accuracy	arc-min	±0.5	±0.5	±0.5	±0.5	±0.5
旋转平台平面振幅 otating Platform Plane Amplitude	mm	±0.005	±0.005	±0.005	±0.005	±0.005
旋转平台同心度 Concentricity of Rotating Platform	mm	±0.005	±0.005	±0.005	±0.005	±0.005
盘面与底座平行度 Parallelism Between Plate and Base	mm	±0.01	±0.01	±0.01	±0.01	±0.01
精度寿命 Accuracy Life	h	25000	25000	25000	25000	25000
防护等级 Protection Leve	IP	50	50	50	50	50
重量 Weight	Kg	1.2	0.5	3.3	6.5	18

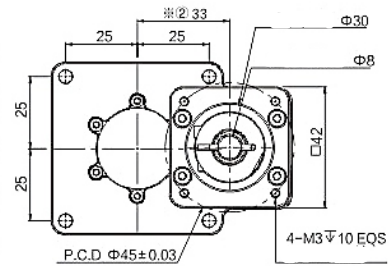
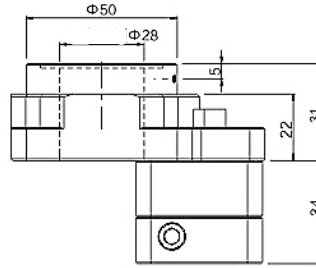
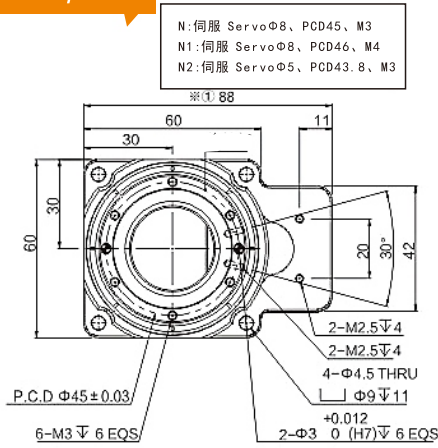
\* 以上技术参数仅供参考，实际根据客户提供的数据，会出具相应的技术参数及尺寸  
The above technical parameters are for reference only. According to the data provided by the customer, the corresponding technical parameters and dimensions will be issued.



# 工业自动化技术解决方案专业供应商

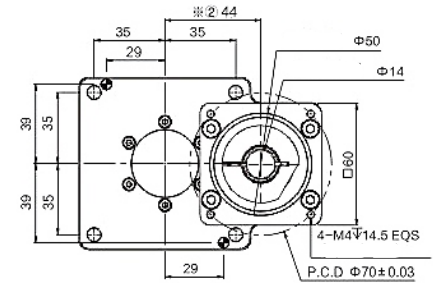
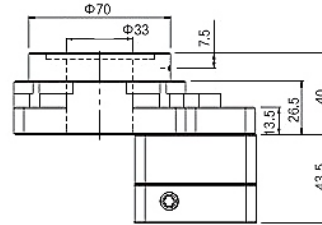
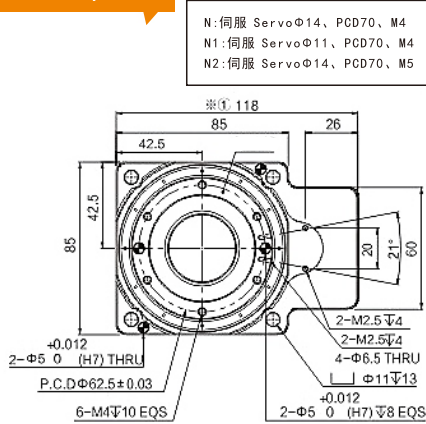
## professional supplier of industrial automation technology solutions

### JHRS-60-05/10-N



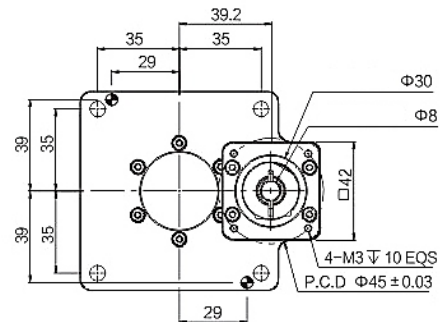
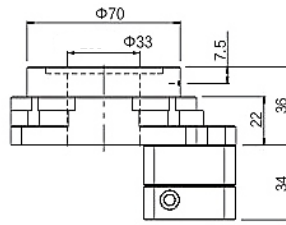
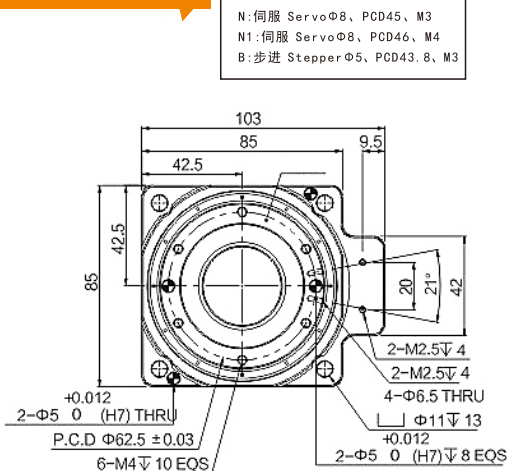
符号 Symbol	型号 Model	JHRS-60-05-N	JHRS60-10-N
※①		88	86
※②		33	31

### JHRS-85-05/10-N



符号 Symbol	型号 Model	JHRS-85-05-N	JHRS-60-10-N
※①		118	114
※②		44	42

### JHRS-85-15/18-N



\*以上技术参数仅供参考, 实际根据客户提供的数据, 会出具相应的技术参数及尺寸  
 The above technical parameters are for reference only. According to the data provided by the customer, the corresponding technical parameters and dimensions will be issued.

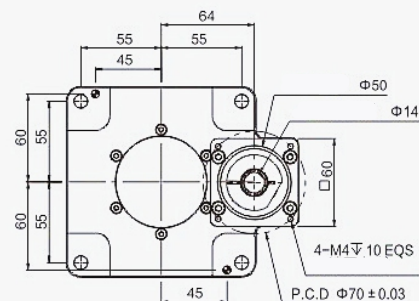
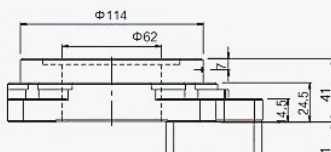
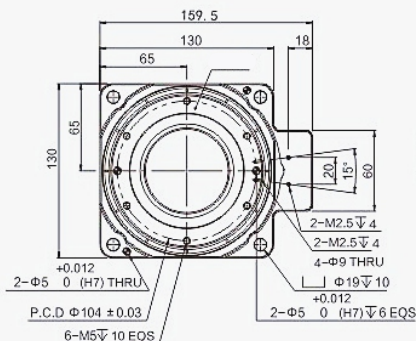
\*原点传感器套件: MTH 系列搭配OMRON EE-SX672.  
 Origin Sensor Kit: MVTH Series with OMRON EE-SX672.

# JHRS 中空旋转平台 Hollow Rotary Platform

## JHRS-130-10/18-N

N: 伺服 Servo  $\Phi 14$ , PCD70, M4  
N1: 伺服 Servo  $\Phi 11$ , PCD70, M4  
N2: 伺服 Servo  $\Phi 14$ , PCD70, M5

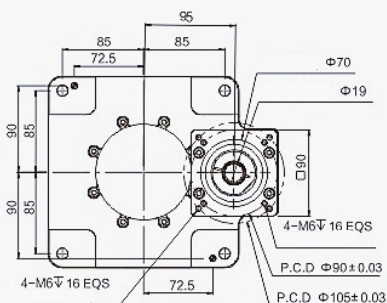
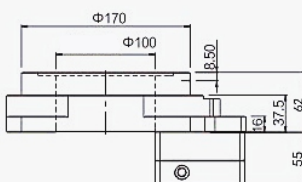
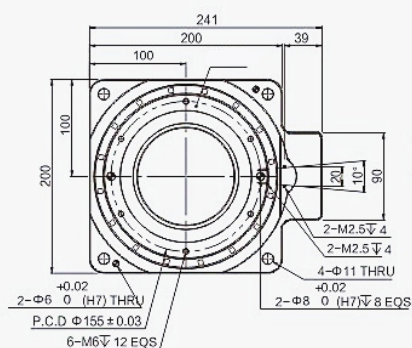
B: 步进 Stepper  $\Phi 6.35$ , PCD66.67, M4  
B1: 步进 Stepper  $\Phi 8$ , PCD66.67, M4  
B2: 步进 Stepper  $\Phi 8$ , PCD70, M4



## JHRS-200-10/18-N

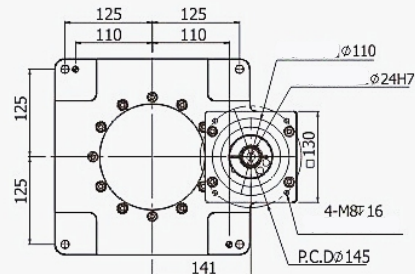
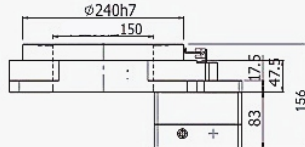
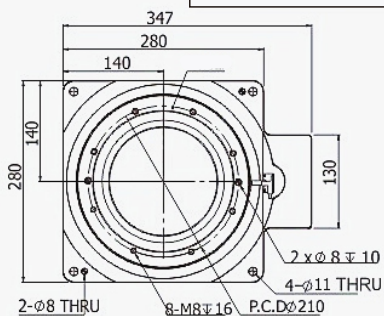
N: 伺服 Servo  $\Phi 19$ , PCD90, M5  
N1: 伺服 Servo  $\Phi 19$ , PCD90, M6

B: 步进 Stepper  $\Phi 14$ , PCD98.4, M5  
B1: 步进 Stepper  $\Phi 14$ , PCD98.4, M6  
B2: 步进 Stepper  $\Phi 12.7$ , PCD98.4, M5



## JHRS-280-10-N

N: 伺服 Servo  $\Phi 22$ , PCD145, M8  
N1: 伺服 Servo  $\Phi 24$ , PCD145, M8

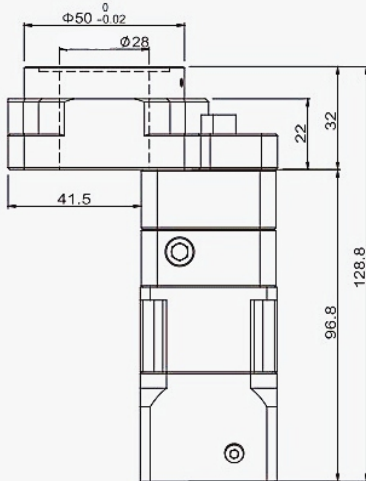
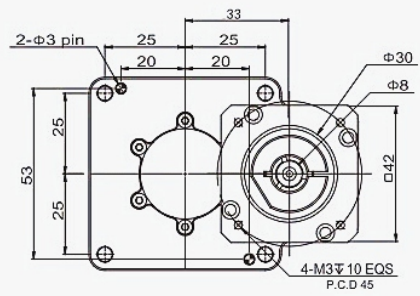
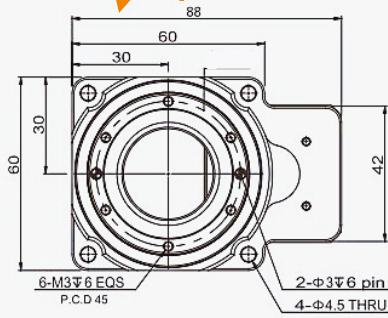


\* 以上技术参数仅供参考，实际根据客户提供的数据，会出具相应的技术参数及尺寸  
The above technical parameters are for reference only. According to the data provided by the customer, the corresponding technical parameters and dimensions will be issued.  
\* 原点传感器套件: MTH 系列搭配OMRON EE-SX672.  
Origin Sensor Kit: MVTH Series with OMRON EE-SX672.



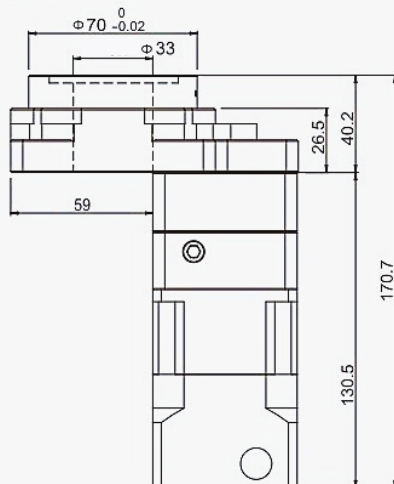
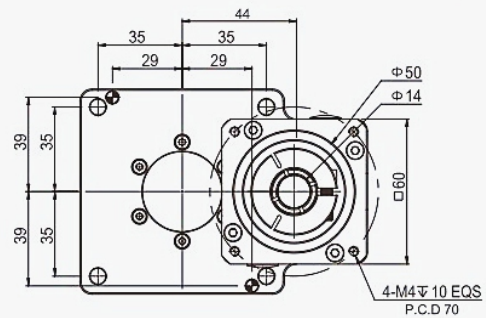
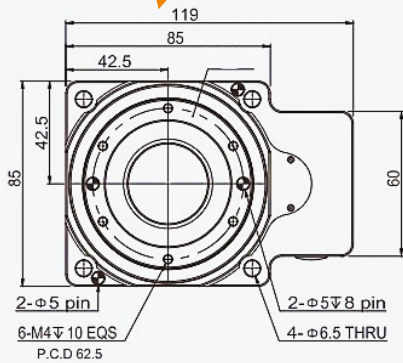
## JHRS-60-J-20-N

professional supplier of industrial automation technology solutions



产品型号 Product Model	单位 Unit	JHRS-60-J-20-N
马达类型 Motor Type	W	50/100
旋转平台轴承 Rotary Platform Bearing		交叉滚子轴承 Crossed Roller Bearing
容许转矩 Allowable Torque	N.m	5
容许惯性力矩 Allowable Moment of Inertia	N.m	9
容许盘面输出转速 Allowable Disk Output Speed	rpm	200 (盘面 Disk)
减速比 Reduction Ratio	I	15/20/25/30/35/50
容许轴向负载 Allowable Axial Load	N	300
定位精度 Positioning Accuracy	arc-min	±0.5
重复定位精度 Repeatability	arc-sec	±5
旋转平台平面振幅 Rotating Platform Plane Amplitude	mm	±0.005
旋转平台同心度 Concentricity of Rotating Platform	mm	±0.005
盘面与底座平行度 Parallelism Between Plate and Base	IP	±0.01
防护等级 Protection Level	IP	50
精度寿命 Accuracy Life	h	25000
重量 Weight	KG	1.2

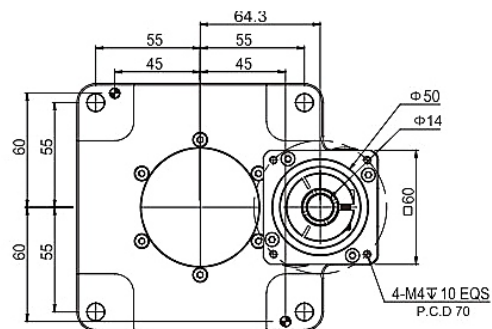
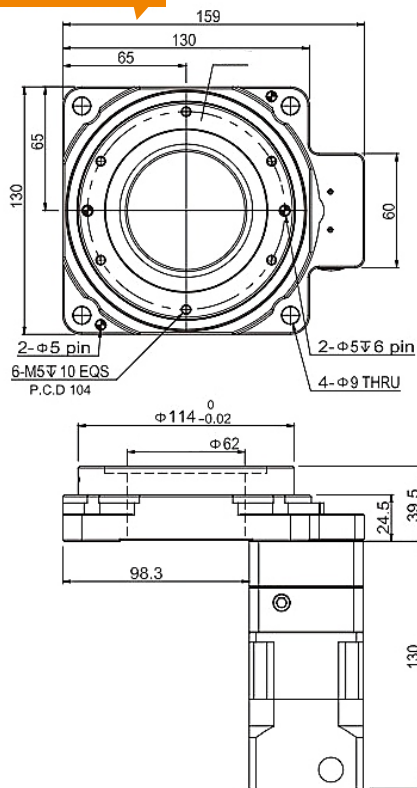
## JHRS-85-J-20-N



产品型号 Product Model	单位 Unit	JHRS-85-J-20-N
马达类型 Motor Type	W	200/400
旋转平台轴承 Rotary Platform Bearing		交叉滚子轴承 Crossed Roller Bearing
容许转矩 Allowable Torque	N.m	40
容许惯性力矩 Allowable Moment of Inertia	N.m	62
容许盘面输出转速 Allowable Disk Output Speed	rpm	200 (盘面 Disk)
减速比 Reduction Ratio	I	15/20/25/30/35/50
容许轴向负载 Allowable Axial Load	N	300
定位精度 Positioning Accuracy	arc-min	±0.5
重复定位精度 Repeatability	arc-sec	±5
旋转平台平面振幅 Rotating Platform Plane Amplitude	mm	±0.005
旋转平台同心度 Concentricity of Rotating Platform	mm	±0.005
盘面与底座平行度 Parallelism Between Plate and Base	IP	±0.01
防护等级 Protection Level	IP	50
精度寿命 Accuracy Life	h	25000
重量 Weight	KG	2.7

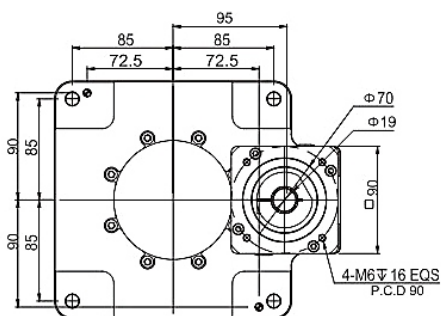
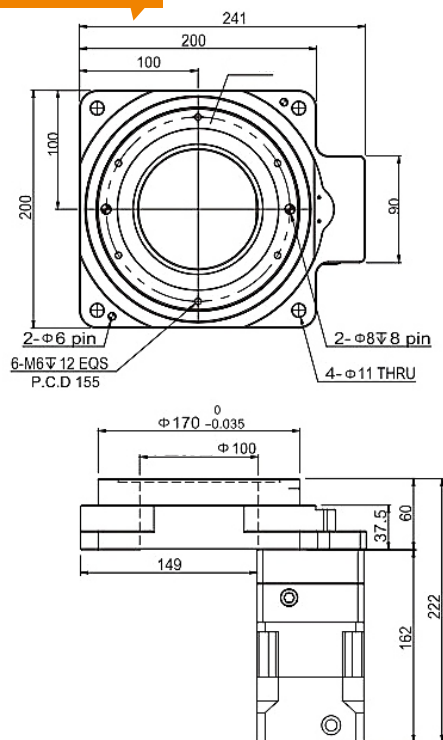
# JHRS 中空旋转平台 Hollow Rotary Platform

## JHRS-130-J-40-N



产品型号 Product Model	单位 Unit	JHRS-130-J-40-N
马达类型 Motor Type	W	200/400
旋转平台轴承 Rotary Platform Bearing		交叉滚子轴承 Crossed Roller Bearing
容许转矩 Allowable Torque	N.m	55
容许惯性力矩 Allowable Moment of Inertia	N.m	90
容许盘面输出转速 Allowable Disk Output Speed	rpm	200 (盘面 Disk)
减速比 Reduction Ratio	I	15/20/25/30/35/50
容许轴向负载 Allowable Axial Load	N	2500
定位精度 Positioning Accuracy	arc-min	±0.5
重复定位精度 Repeatability	arc-sec	±5
旋转平台平面振幅 Rotating Platform Plane Amplitude	mm	±0.005
旋转平台同心度 Concentricity of Rotating Platform	mm	±0.005
盘面与底座平行度 Parallelism Between Plate and Base	IP	±0.01
防护等级 Protection Level	IP	50
精度寿命 Accuracy Life	h	25000
重量 Weight	KG	3.8

## JHRS-200-J-40-N



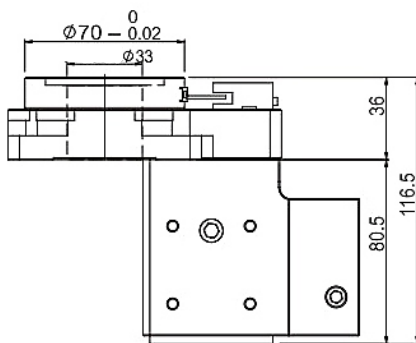
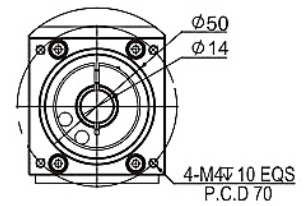
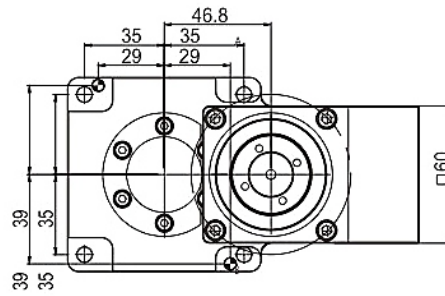
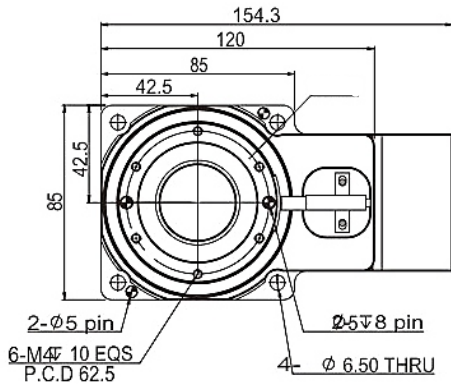
产品型号 Product Model	单位 Unit	JHRS-200-J-40-N
马达类型 Motor Type	W	750
旋转平台轴承 Rotary Platform Bearing		交叉滚子轴承 Crossed Roller Bearing
容许转矩 Allowable Torque	N.m	90
容许惯性力矩 Allowable Moment of Inertia	N.m	140
容许盘面输出转速 Allowable Disk Output Speed	rpm	200 (盘面 Disk)
减速比 Reduction Ratio	I	15/20/25/30/35/50
容许轴向负载 Allowable Axial Load	N	4500
定位精度 Positioning Accuracy	arc-min	±0.5
重复定位精度 Repeatability	arc-sec	±5
旋转平台平面振幅 Rotating Platform Plane Amplitude	mm	±0.005
旋转平台同心度 Concentricity of Rotating Platform	mm	±0.005
盘面与底座平行度 Parallelism Between Plate and Base	IP	±0.01
防护等级 Protection Level	IP	50
精度寿命 Accuracy Life	h	25000
重量 Weight	KG	11.5



JHRS-85-Z-30-N

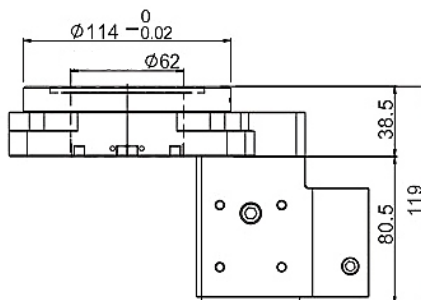
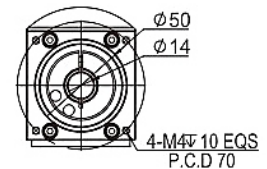
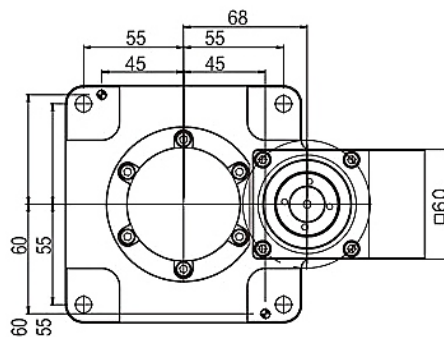
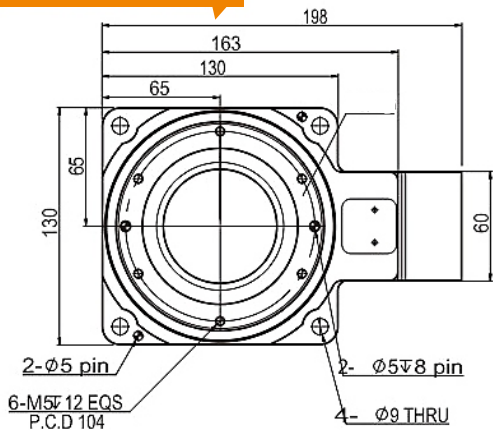
# 工业自动化技术解决方案专业供应商

professional supplier of industrial automation technology solutions



产品型号 Product Model	单位 Unit	JHRS-85-Z-30-N
马达类型 Motor Type	W	200/400
旋转平台轴承 Rotary Platform Bearing		交叉滚子轴承 Crossed Roller Bearing
容许转矩 Allowable Torque	N.m	45
容许惯性力矩 Allowable Moment of Inertia	N.m	65
容许盘面输出转速 Allowable Disk Output Speed	rpm	200 (盘面 Disk)
减速比 Reduction Ratio	I	18
容许轴向负载 Allowable Axial Load	N	800
定位精度 Positioning Accuracy	arc-min	±0.5
重复定位精度 Repeatability	arc-sec	±5
旋转平台平面振幅 Rotating Platform Plane Amplitude	mm	±0.005
旋转平台同心度 Concentricity of Rotating Platform	mm	±0.005
盘面与底座平行度 Parallelism Between Plate and Base	IP	±0.01
防护等级 Protection Level	IP	50
精度寿命 Accuracy Life	h	25000
重量 Weight	KG	2.2

JHRS-130-Z-30-N



产品型号 Product Model	单位 Unit	JHRS-130-Z-30-N
马达类型 Motor Type	W	200/400
旋转平台轴承 Rotary Platform Bearing		交叉滚子轴承 Crossed Roller Bearing
容许转矩 Allowable Torque	N.m	60
容许惯性力矩 Allowable Moment of Inertia	N.m	95
容许盘面输出转速 Allowable Disk Output Speed	rpm	200 (盘面 Disk)
减速比 Reduction Ratio	I	18
容许轴向负载 Allowable Axial Load	N	2500
定位精度 Positioning Accuracy	arc-min	±0.5
重复定位精度 Repeatability	arc-sec	±5
旋转平台平面振幅 Rotating Platform Plane Amplitude	mm	±0.005
旋转平台同心度 Concentricity of Rotating Platform	mm	±0.005
盘面与底座平行度 Parallelism Between Plate and Base	IP	±0.01
防护等级 Protection Level	IP	50
精度寿命 Accuracy Life	h	25000
重量 Weight	KG	3.5

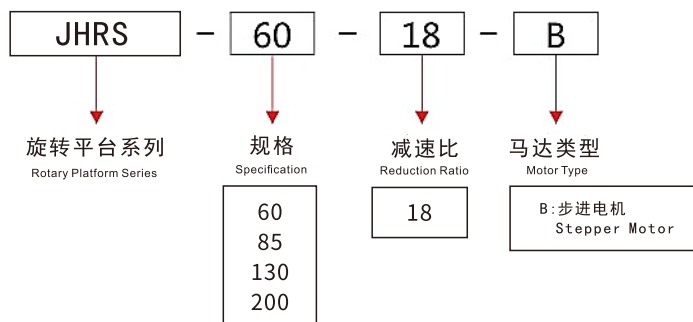
\*以上技术参数仅供参考，实际根据客户提供的数据，会出具相应的技术参数及尺寸  
The above technical parameters are for reference only. According to the data provided by the customer, the corresponding technical parameters and dimensions will be issued.

\*原点传感器套件: MTH 系列搭配OMRON EE-SX672.  
Origin Sensor Kit: MVTH Series with OMRON EE-SX672.

# JHRS 中空旋转平台

## Hollow Rotary Platform

### 型号识别 Model Identification



### 技术参数 Technical Parameter

产品型号 Product Model	单位 Unit	JHRS-60-18-B	JHRS-85-18-B	JHRS-130-18-B	JHRS-200-18-B
减速比 Reduction Ratio	l	18	18	18	18
匹配步进电机 Matching Stepper Motor	w	28	42	57	86
轴承结构 Structure of Bearing		交叉滚子轴承 Crossed Roller Bearing	交叉滚子轴承 Crossed Roller Bearing	交叉滚子轴承 Crossed Roller Bearing	交叉滚子轴承 Crossed Roller Bearing
容许转矩 Allowable Torque	N.m	2.2	4	25	60
容许惯性力矩 Allowable Moment of Inertia	N.m	5.6	7	65	120
容许盘面输出转速 Allowable Disk Output Speed	r/min	200(盘面 Disk)	400(盘面 Disk)	200(盘面 Disk)	200(盘面 Disk)
容许轴向负载 Allowable Axial Load	N	300	150	2500	4500
重复定位精度 Bi Repeatability	arc-sec	±5	±5	±5	±5
定位精度 Positioning Accuracy	arc-min	±0.5	±0.5	±0.5	±0.5
旋转平台平面振幅 Rotating Platform Plane Amplitude	mm	±0.005	±0.005	±0.005	±0.005
旋转平台同心度 Concentricity of Rotating Platform	mm	±0.005	±0.005	±0.005	±0.005
盘面与底座平行度 Parallelism Between Plate and Base	mm	±0.01	±0.01	±0.01	±0.01
精度寿命 Accuracy Life	h	25000	25000	25000	25000
防护等级 Protection Leve	IP	50	50	50	50
重量 Weight	Kg	1.2	0.5	3.1	9

### 马达参数 Motor Parameter

步进角 Step Angle	°	1.8	1.8	1.8	1.8
额定电压 Rated Voltage	V	3.5	3.3	3.5	3.4
额定电流 Rated Current	A	1.2	1.3	3	5.5
保持力矩 Holding Torque	N.m	0.13	0.5	2	4.2
相数 Phase		2	2	2	2
引线数 Number of Leads		4	4	4	4
接线 Wiring		绿(A)白(B)黄(A')棕(B') Green(A) White(B) Yellow(B') Brown(B')	绿(A)白(B)黄(A')棕(B') Green(A) White(A') Yellow(B') Brown(B')	黑1(A)黑2(B)黑3(A')黄(B') Black1(A) Black2(A') Black3(B') Yellow(B')	红(A)棕(B)黄(A')橙(B') Red(A) Brown(A') Yellow(B) Orange(B')

\* 以上技术参数仅供参考，实际根据客户提供的数据，会出具相应的技术参数及尺寸  
The above technical parameters are for reference only. According to the data provided by the customer, the corresponding technical parameters and dimensions will be issued.

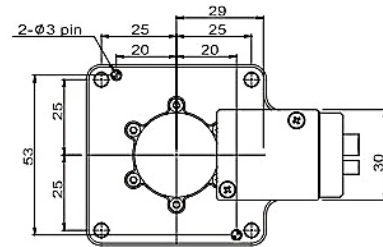
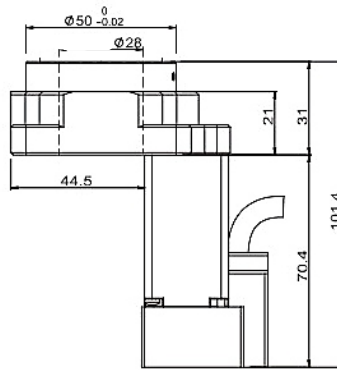
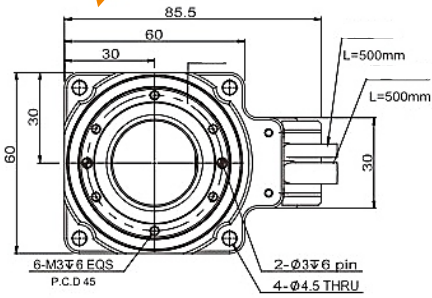




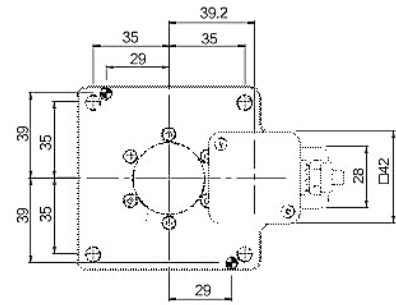
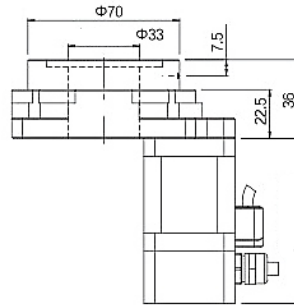
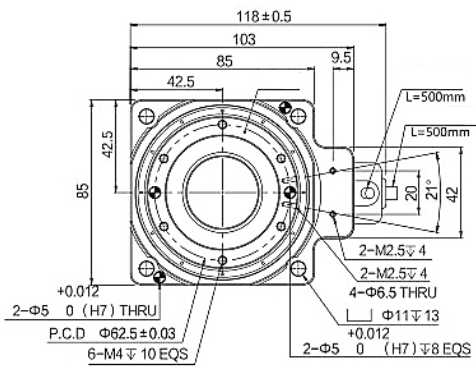




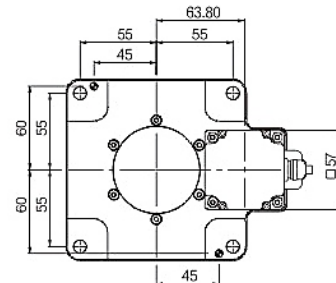
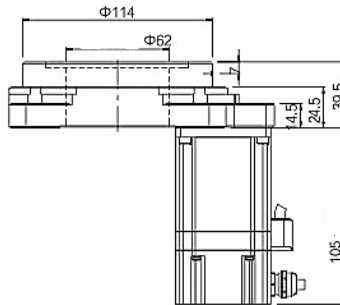
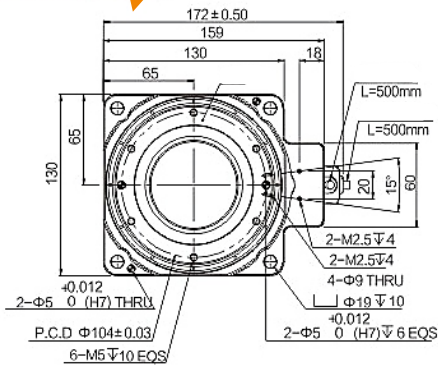
JHRS-60-18-S



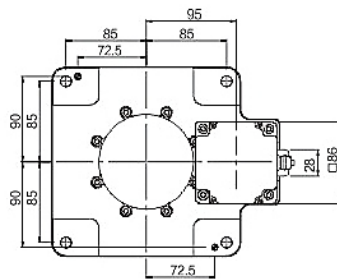
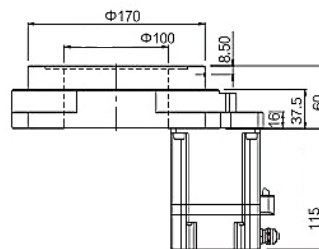
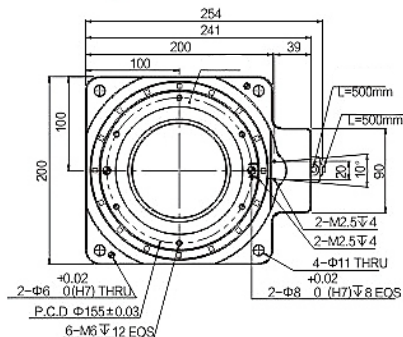
JHRS-85-18-S



JHRS-130-18-S



JHRS-200-18-S



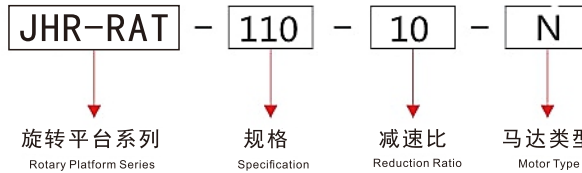
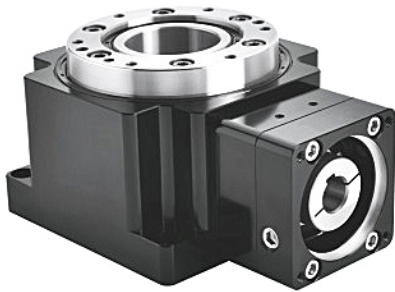
\*以上技术参数仅供参考，实际根据客户提供的数据，会出具相应的技术参数及尺寸  
The above technical parameters are for reference only. According to the data provided by the customer, the corresponding technical parameters and dimensions will be issued.  
\* 原传感器套件: MTH 系列搭配OMRON EE-SX674.  
Origin Sensor Kit: MTH Series with OMRON EE-SX674.

# JHR-RAT 直角中空旋转平台

## Right Angle Hollow Rotary Platform

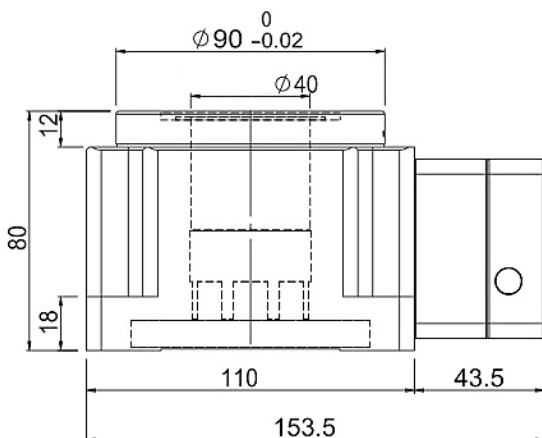
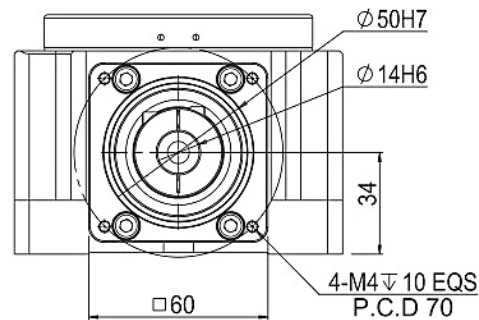
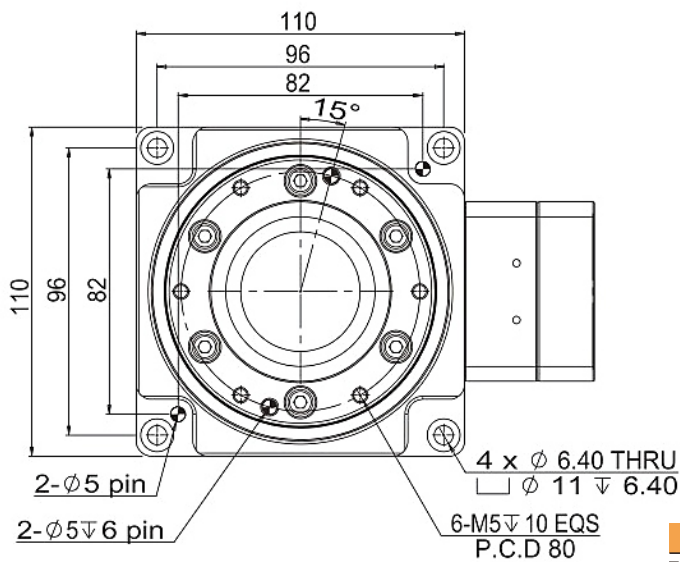
型号识别

Model Identification



N: 伺服 Servo $\Phi$ 14、PCD70、M4 N1: 伺服 Servo $\Phi$ 11、PCD70、M4 N2: 伺服 Servo $\Phi$ 14、PCD70、M5 适配各品牌200W/400W AC 伺服马达 suitable for 200W/400W AC servo motors of various brands
B: 步进 Stepper $\Phi$ 6.35、PCD66.67、M4 B1: 步进 Stepper $\Phi$ 8、PCD66.67、M4 B2: 步进 Stepper $\Phi$ 8、PCD70、M4 适配各品牌57/60型步进马达 Suitable for 57/60 stepper motors of various brands

JHR-RAT-110-10-N



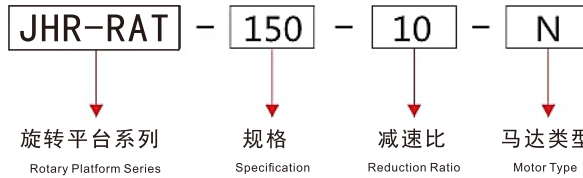
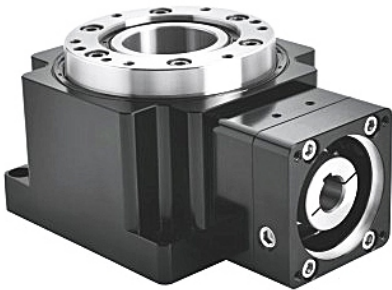
产品型号 Product Model	单位 Unit	JHR-RAT-110-10-N
马达类型 Motor Type	W	200/400
旋转平台轴承 Rotary Platform Bearing		交叉滚子轴承 Crossed Roller Bearing
容许转矩 Allowable Torque	N.m	50
容许惯性力矩 Allowable Moment of Inertia	N.m	70
容许盘面输出转速 Allowable Disk Output Speed	rpm	200 (盘面 Disk)
减速比 Reduction Ratio	I	10
容许轴向负载 Allowable Axial Load	N	1800
定位精度 Positioning Accuracy	arc-min	±0.5
重复定位精度 Repeatability	arc-sec	±5
旋转平台平面振幅 Rotating Platform Plane Amplitude	mm	±0.005
旋转平台同心度 Concentricity of Rotating Platform	mm	±0.005
盘面与底座平行度 Parallelism Between Plate and Base	IP	±0.01
防护等级 Protection Level	IP	54
精度寿命 Accuracy Life	h	25000
重量 Weight	KG	3

# 工业自动化技术解决方案专业供应商

## professional supplier of industrial automation technology solutions

### 型号识别

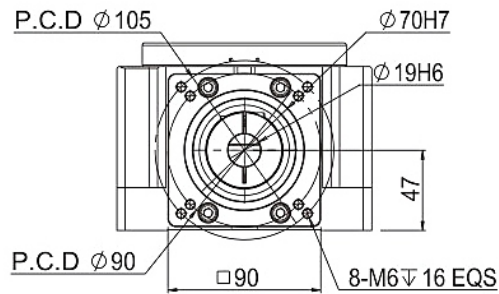
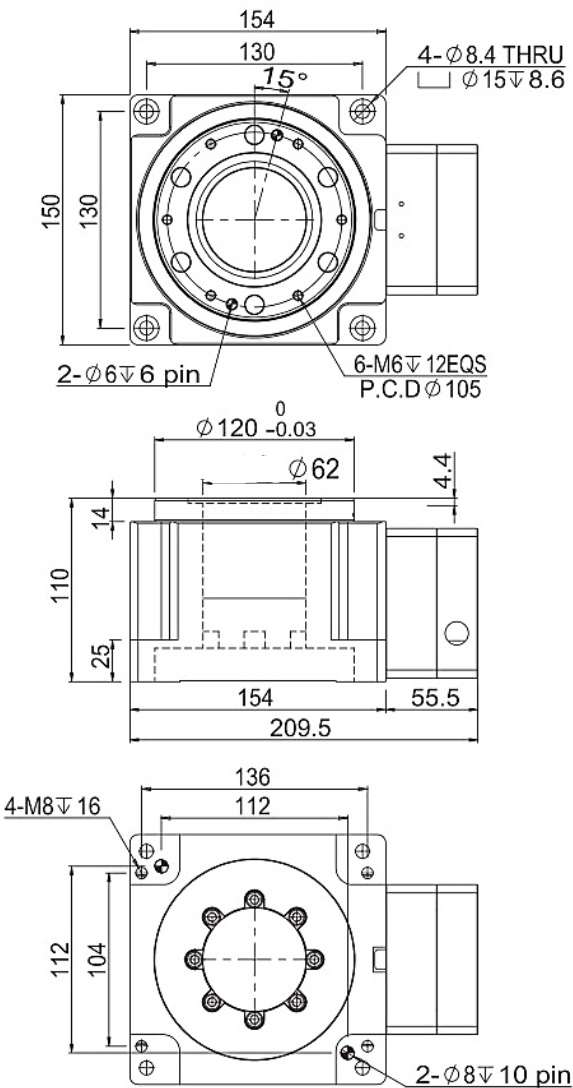
### Model Identification



N: 伺服 ServoΦ19、PCD90、M5  
 N1: 伺服 ServoΦ19、PCD90、M6  
 适配各品牌750W AC 伺服马达  
 suitable for 750W AC servo motors of various brands

B: 步进 StepperΦ 14、PCD98.4、M5  
 B1: 步进 StepperΦ 14、PCD98.4、M6  
 B2: 步进 StepperΦ 12.7、PCD98.4、M5  
 适配各品牌86型步进马达  
 Suitable for 86 stepper motors of various brands

### JHR-RAT-150-10-N



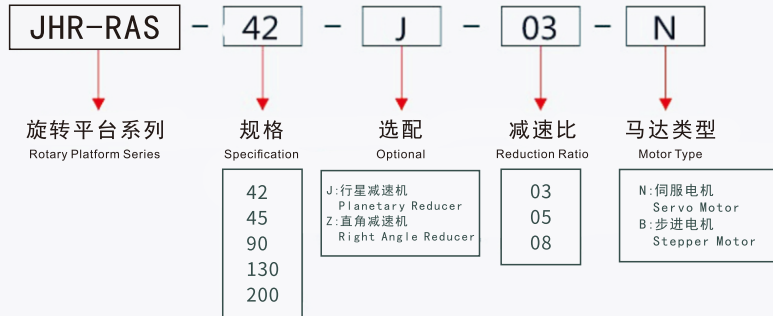
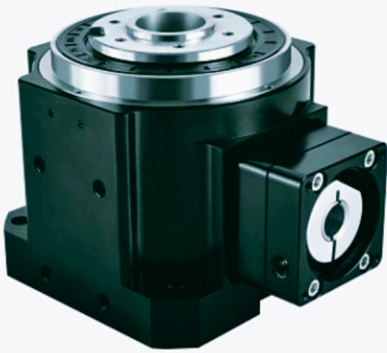
产品型号 Product Model	单位 Unit	JHR-RAT-150-10-N
马达类型 Motor Type	W	750
旋转平台轴承 Rotary Platform Bearing		交叉滚子轴承 Crossed Roller Bearing
容许转矩 Allowable Torque	N.m	100
容许惯性力矩 Allowable Moment of Inertia	N.m	140
容许盘面输出转速 Allowable Disk Output Speed	rpm	200(盘面 Disk)
减速比 Reduction Ratio	I	10
容许轴向负载 Allowable Axial Load	N	4000
定位精度 Positioning Accuracy	arc-min	±0.5
重复定位精度 Repeatability	arc-sec	±5
旋转平台平面振幅 Rotating Platform Plane Amplitude	mm	±0.005
旋转平台同心度 Concentricity of Rotating Platform	mm	±0.005
盘面与底座平行度 Parallelism Between Plate and Base	IP	±0.01
防护等级 Protection Level	IP	54
精度寿命 Accuracy Life	h	25000
重量 Weight	KG	7.6



# JHR-RAS 直角中空旋转平台

## Right Angle Hollow Rotary Platform

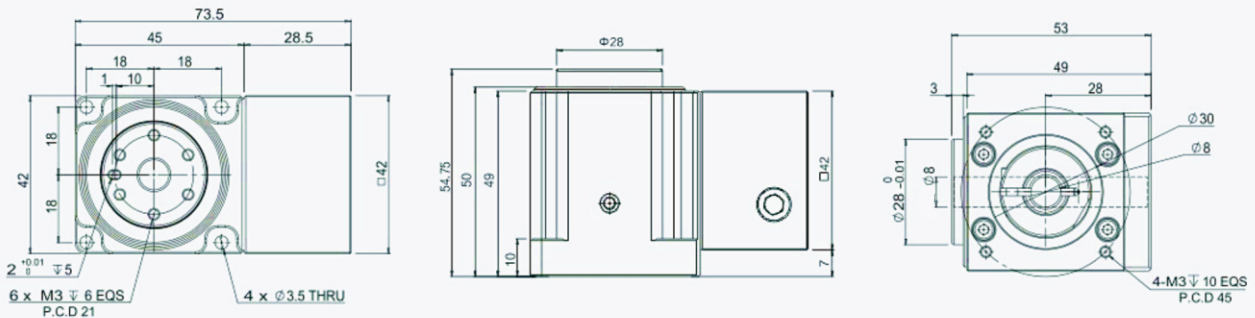
### 型号识别 Model Identification



### 技术参数 Technical Parameter

产品型号 Product Model	单位 Unit	JHR-RAS-42	JHR-RAS-45	JHR-RAS-90	JHR-RAS-130	JHR-RAS-200
减速比 Reduction Ratio	l	3	8	3	3	5
匹配伺服马达 Matching Servo Motor	w	100	28 Stepper	100	400	750
轴承结构 Structure of Bearing		圆锥滚子轴承 Tapered Roller Bearings	圆锥滚子轴承 Tapered Roller Bearings	圆锥滚子轴承 Tapered Roller Bearings	圆锥滚子轴承 Tapered Roller Bearings	圆锥滚子轴承 Tapered Roller Bearings
容许转矩 Allowable Torque	N.m	14	4	35	60	100
容许惯性力矩 Allowable Moment of Inertia	N.m	20	7	76	90	160
容许盘面输出转速 Allowable Disk Output Speed	r/min	600 (盘面 Disk)	400 (盘面 Disk)	600 (盘面 Disk)	600 (盘面 Disk)	400 (盘面 Disk)
容许轴向负载 Allowable Axial Load	N	250	150	1000	2000	4000
重复定位精度 Bi Repeatability	arc-sec	±5	±5	±5	±5	±5
定位精度 Positioning Accuracy	arc-min	±0.5	±0.5	±0.5	±0.5	±0.5
旋转平台平面振幅 Rotating Platform Plane Amplitude	mm	±0.005	±0.005	±0.005	±0.005	±0.005
旋转平台同心度 Concentricity of Rotating Platform	mm	±0.005	±0.005	±0.005	±0.005	±0.005
盘面与底座平行度 Parallelism Between Plate and Base	mm	±0.01	±0.01	±0.01	±0.01	±0.01
精度寿命 Accuracy Life	h	25000	25000	25000	25000	25000
防护等级 Protection Level	IP	50	50	50	50	50
重量 Weight	Kg	1.2	0.5	3.3	6.5	18

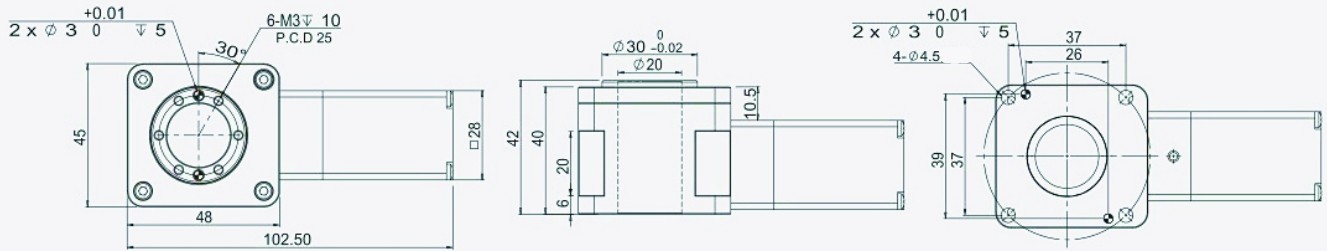
### JHR-RAS-42-03-N



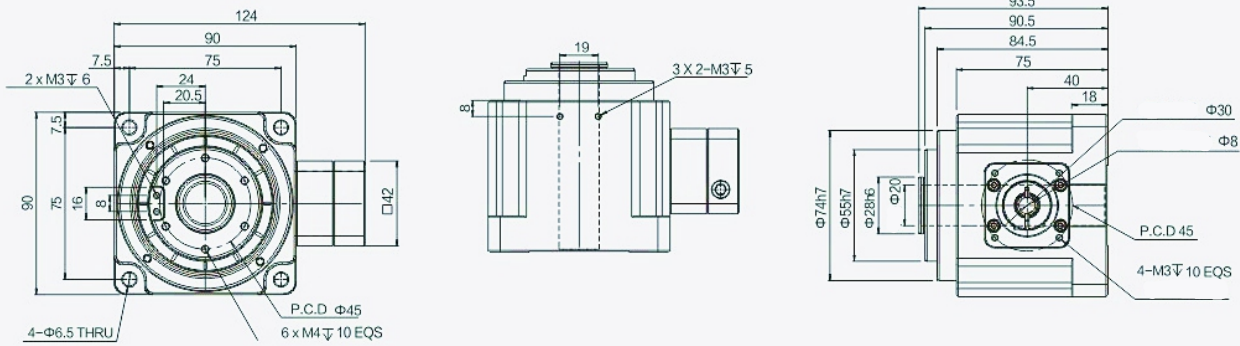
\* 以上技术参数仅供参考，实际根据客户提供的数据，会出具相应的技术参数及尺寸  
The above technical parameters are for reference only. According to the data provided by the customer, the corresponding technical parameters and dimensions will be issued.

## JHR-RAS-45-08-B

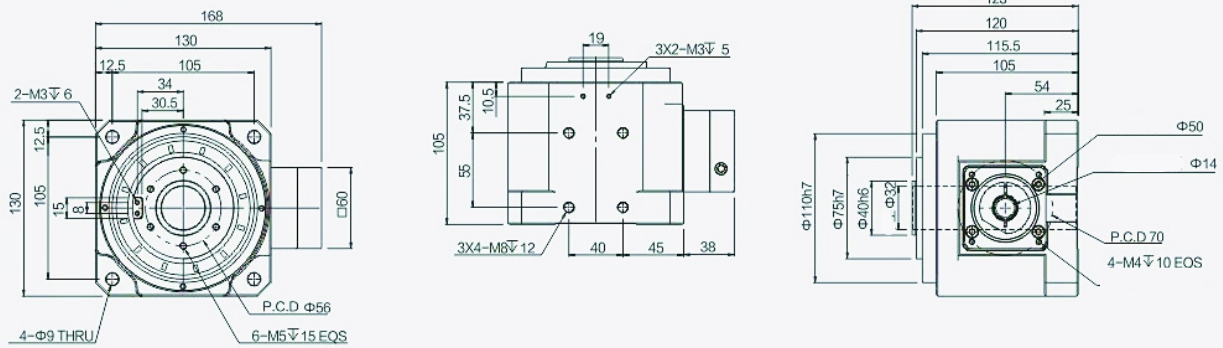
professional supplier of industrial automation technology solutions



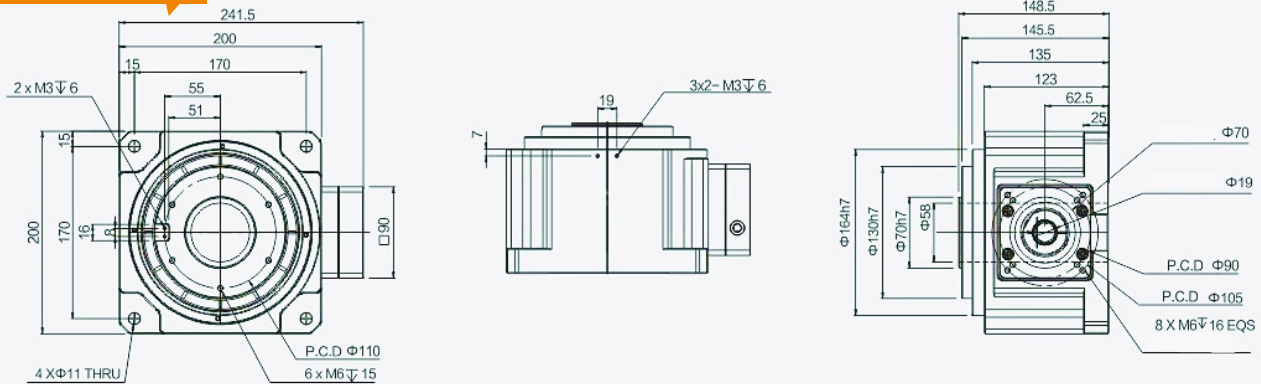
## JHR-RAS-90-03-N



## JHR-RAS-130-03-N



## JHR-RAS-200-05-N

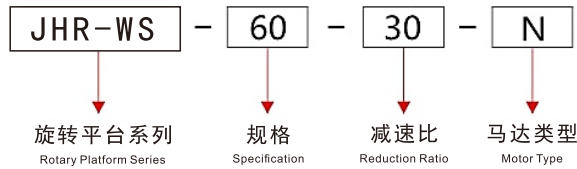


\* 以上技术参数仅供参考，实际根据客户提供的数据，会出具相应的技术参数及尺寸  
The above technical parameters are for reference only. According to the data provided by the customer, the corresponding technical parameters and dimensions will be issued.

# JHR-WS 海波齿中空旋转平台

## Hollow rotating platform with sea wave teeth

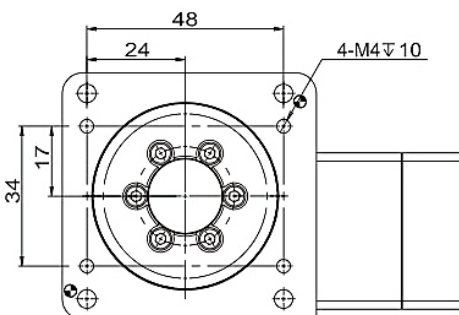
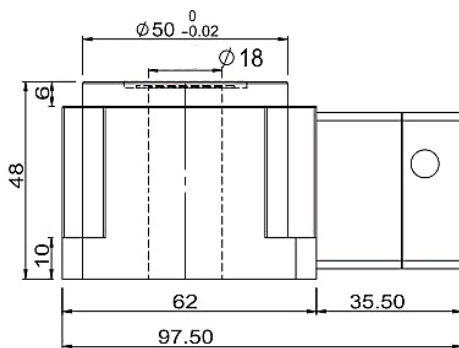
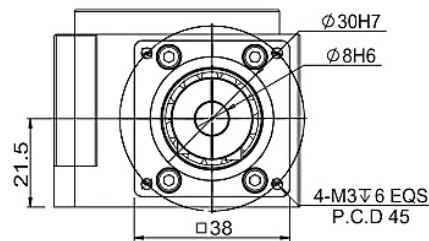
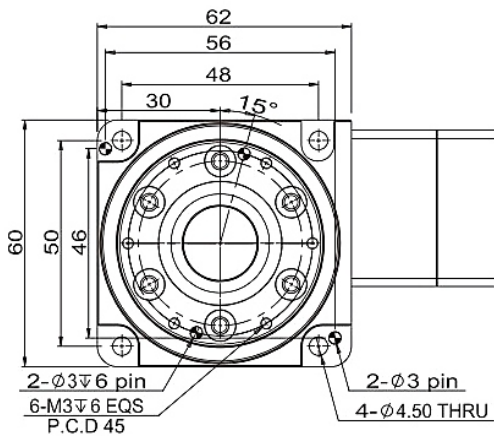
型号识别  
Model Identification



N: 伺服 Servo  $\Phi 8$ 、PCD45、M3  
N1: 伺服 Servo  $\Phi 8$ 、PCD46、M4  
适配各品牌100W AC 伺服马达  
suitable for 100W AC servo motors of various brands

B: 步进 Stepper  $\Phi 5$ 、PCD43.8、M3  
适配各品牌42型步进马达  
Suitable for 42 stepper motors of various brands

### JHR-WS-60-30-N



产品型号 Product Model	单位 Unit	JHR-WS-60-30-N
马达类型 Motor Type	W	50/100
旋转平台轴承 Rotary Platform Bearing		交叉滚子轴承 Crossed Roller Bearing
容许转矩 Allowable Torque	N.m	38
容许惯性力矩 Allowable Moment of Inertia	N.m	8
容许盘面输出转速 Allowable Disk Output Speed	rpm	100 (盘面 Disk)
减速比 Reduction Ratio	I	30
容许轴向负载 Allowable Axial Load	N	400
定位精度 Positioning Accuracy	arc-min	≤40
重复定位精度 Repeatability	arc-sec	≤40
旋转平台平面振幅 Rotating Platform Plane Amplitude	mm	±0.005
旋转平台同心度 icity of Rotating Platform	mm	±0.005
盘面与底座平行度 Parallelism Between Plate and Base	IP	±0.01
防护等级 Protection Level	IP	65
精度寿命 Accuracy Life	h	30000
重量 Weight	KG	0.9

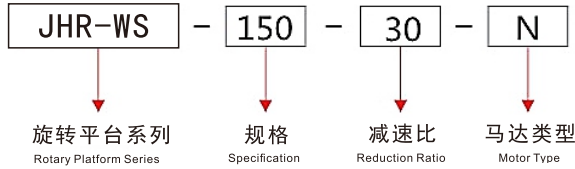
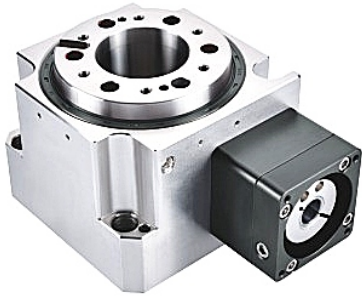




# JHR-WS 海波齿中空旋转平台

## Hollow rotating platform with sea wave teeth

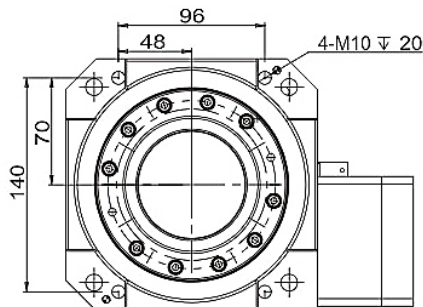
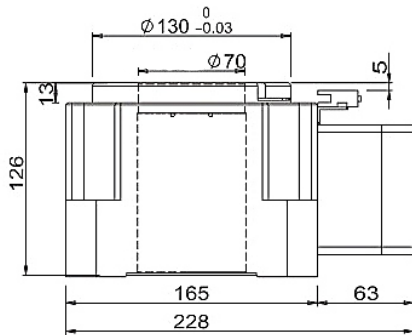
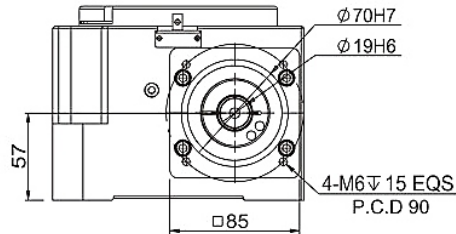
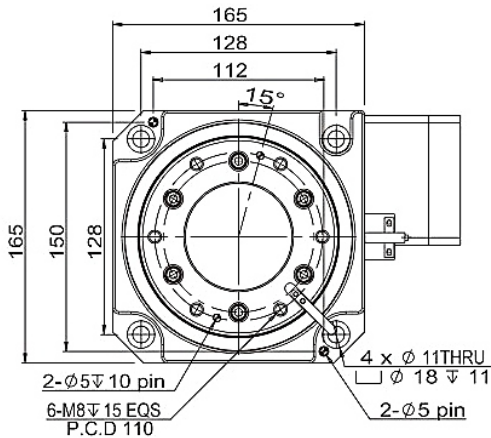
### 型号识别 Model Identification



N: 伺服 ServoΦ19、PCD90、M5  
N1: 伺服 ServoΦ19、PCD90、M6  
适配各品牌750W AC 伺服马达  
suitable for 750W AC servo motors of various brands

B: 步进 StepprΦ14、PCD98.4、M5  
B1: 步进 StepperΦ14、PCD98.4、M6  
B2: 步进 StepperΦ12.7、PCD98.4、M5  
适配各品牌86型步进马达  
Suitable for 86 stepper motors of various brands

### JHR-WS-150-30-N



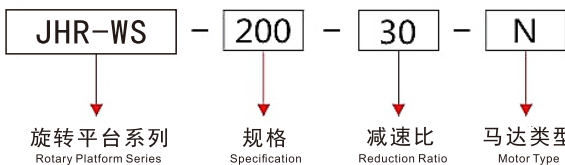
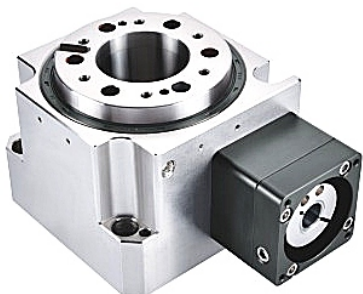
产品型号 Product Model	单位 Unit	JHR-WS-150-30-N
马达类型 Motor Type	W	750
旋转平台轴承 Rotary Platform Bearing		交叉滚子轴承 Crossed Roller Bearing
容许转矩 Allowable Torque	N.m	240
容许惯性力矩 Allowable Moment of Inertia	N.m	480
容许盘面输出转速 Allowable Disk Output Speed	rpm	100 (盘面 Disk)
减速比 Reduction Ratio	I	30
容许轴向负载 Allowable Axial Load	N	7000
定位精度 Positioning Accuracy	arc-min	≤40
重复定位精度 Repeatability	arc-sec	≤10
旋转平台平面振幅 Rotating Platform Plane Amplitude	mm	±0.005
旋转平台同心度 Concentricity of Rotating Platform	mm	±0.005
盘面与底座平行度 Parallelism Between Plate and Base	IP	±0.01
防护等级 Protection Level	IP	65
精度寿命 Accuracy Life	h	30000
重量 Weight	KG	18

# 工业自动化技术解决方案专业供应商

## professional supplier of industrial automation technology solutions

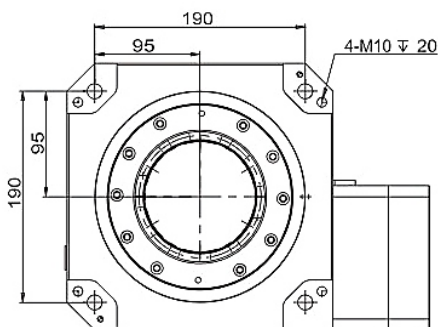
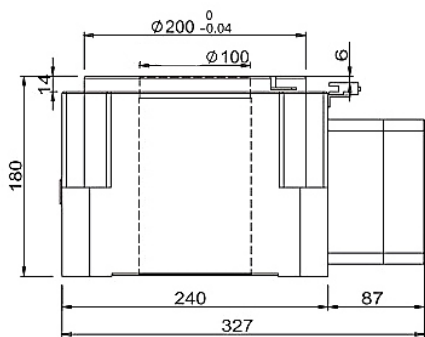
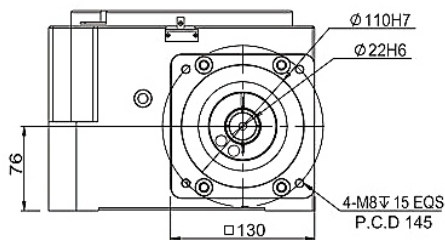
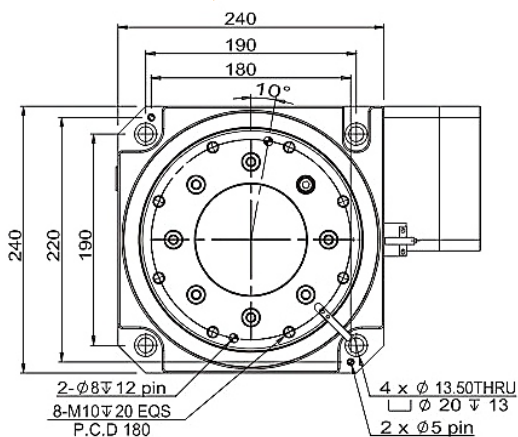
### 型号识别

### Model Identification



N: 伺服 ServoΦ22、PCD145、M8  
 N1: 伺服 ServoΦ24、PCD145、M8  
 适配各品牌1KW/1.5KW AC 伺服马达  
 suitable for 1KW/1.5KW AC servo motors of various brands

### JHR-WS-200-30-N



产品型号 Product Model	单位 Unit	JHR-WS-200-30-N
马达类型 Motor Type	W	1000/1500
旋转平台轴承 Rotary Platform Bearing		交叉滚子轴承 Crossed Roller Bearing
容许转矩 Allowable Torque	N.m	500
容许惯性力矩 Allowable Moment of Inertia	N.m	900
容许盘面输出转速 Allowable Disk Output Speed	rpm	100 (盘面 Disk)
减速比 Reduction Ratio	I	30
容许轴向负载 Allowable Axial Load	N	12000
定位精度 Positioning Accuracy	arc-min	≤40
重复定位精度 Repeatability	arc-sec	≤10
旋转平台平面振幅 Rotating Platform Plane Amplitude	mm	±0.005
旋转平台同心度 Concentricity of Rotating Platform	mm	±0.005
盘面与底座平行度 Parallelism Between Plate and Base	IP	±0.01
防护等级 Protection Level	IP	65
精度寿命 Accuracy Life	h	30000
重量 Weight	KG	59

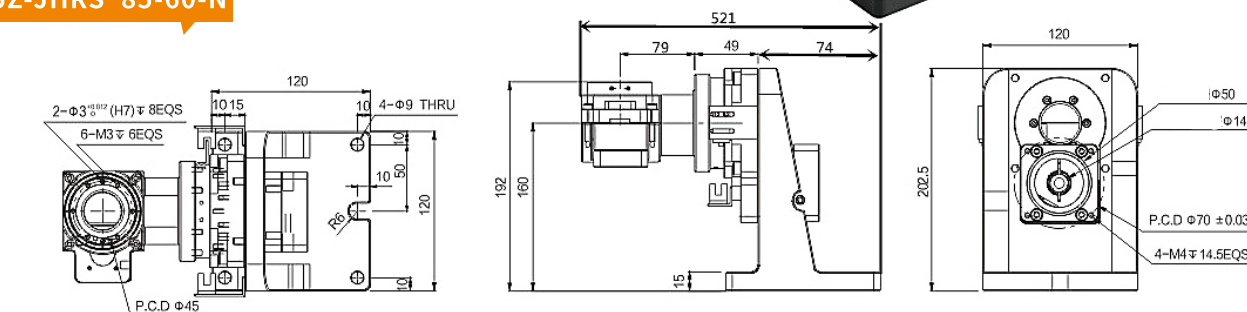


# 5Z 微型旋转轴

## Micro Rotary Shaft



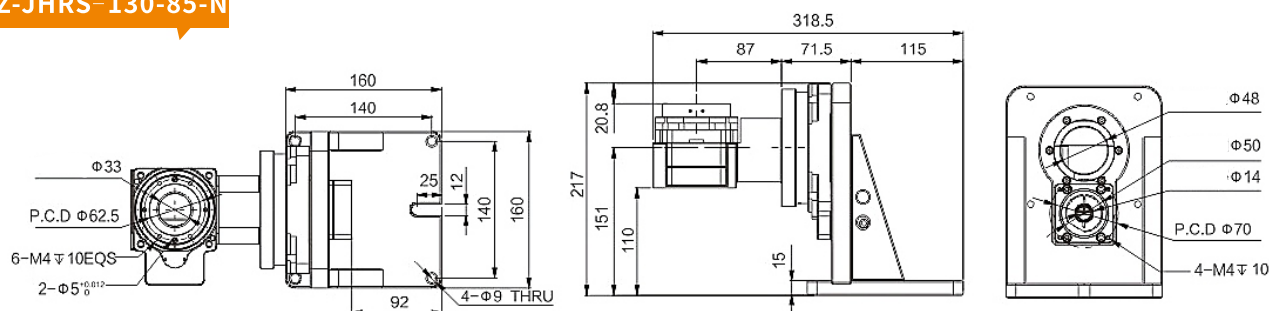
5Z-JHRS-85-60-N



参数项目Parameter item	5Z-JHRS-130-N
工作台转速 Rotation Speed	0~200rpm/min
工作台运动角度访问 Workbench movement angle access	±60°
启停时允许峰值扭矩 Allowable peak torque at start and stop	50Nm
额定扭矩 Rated Torque	15Nm
最大承重量 Max. Load Capacity	<10KG
中心高度 Center Height	130mm
输出法兰端面圆跳动 End Runout of the Output Flange	≤0.01mm
输出法兰径向圆跳动 Radial Runout of Output Flange	≤0.01mm
输出法兰与机台安装面垂直度 Verticality of output flange and machine mounting surface	≤0.015mm
重复定位精度 Bi Repeatability	≤±0.003°

参数项目Parameter item	5Z-JHRS-60-N
工作台转速 Rotation Speed	0~200rpm/min
工作台运动角度访问 Workbench movement angle access	±60°
启停时允许峰值扭矩 Allowable peak torque at start and stop	50Nm
额定扭矩 Rated Torque	15Nm
最大承重量 Max. Load Capacity	<10KG
输出法兰端面圆跳动 End Runout of the Output Flange	≤0.01mm
输出法兰径向圆跳动 Radial Runout of Output Flange	≤0.01mm
输出法兰与机台安装面垂直度 Verticality of output flange and machine mounting surface	≤0.015mm
重复定位精度 Bi Repeatability	≤±0.003°

5Z-JHRS-130-85-N

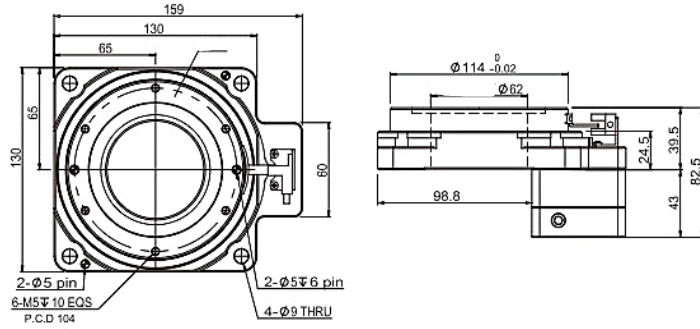


参数项目Parameter item	5Z-JHRS-130-N
工作台转速 Rotation Speed	0~100rpm/min
工作台运动角度访问 Workbench movement angle access	±75°
启停时允许峰值扭矩 Allowable peak torque at start and stop	60Nm
额定扭矩 Rated Torque	30Nm
最大承重量 Max. Load Capacity	<15KG
中心高度 Center Height	151mm
输出法兰端面圆跳动 End Runout of the Output Flange	≤0.015mm
输出法兰径向圆跳动 Radial Runout of Output Flange	≤0.015mm
输出法兰与机台安装面垂直度 Verticality of output flange and machine mounting surface	≤0.015mm
重复定位精度 Bi Repeatability	≤±0.003°

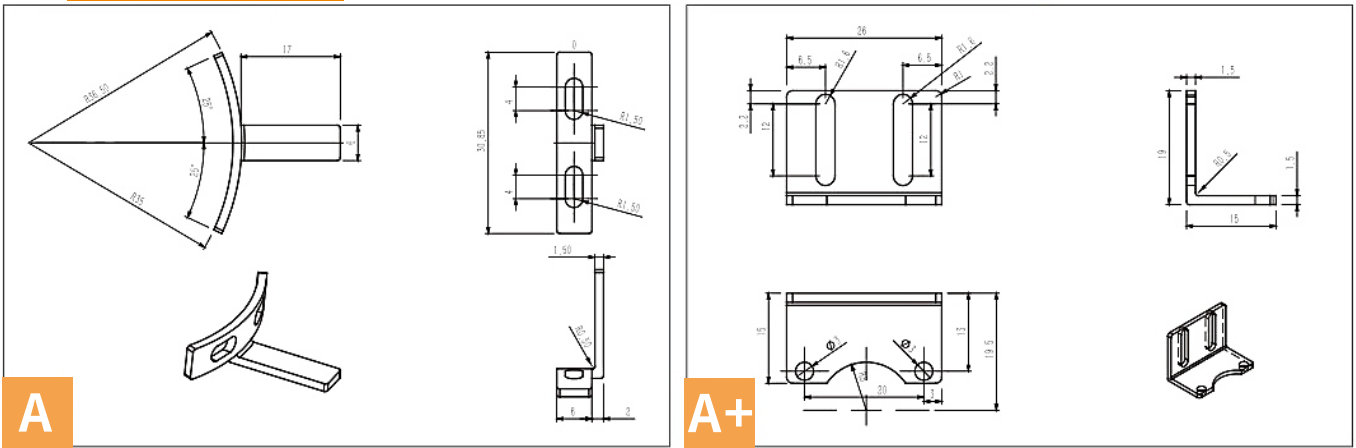
参数项目Parameter item	5Z-JHRS-85-N
工作台转速 Rotation Speed	0~200rpm/min
工作台运动角度访问 Workbench movement angle access	360°
启停时允许峰值扭矩 Allowable peak torque at start and stop	35Nm
额定扭矩 Rated Torque	15Nm
最大承重量 Max. Load Capacity	<8KG
输出法兰端面圆跳动 End Runout of the Output Flange	≤0.015mm
输出法兰径向圆跳动 Radial Runout of Output Flange	≤0.015mm
输出法兰与机台安装面垂直度 Verticality of output flange and machine mounting surface	≤0.015mm
重复定位精度 Bi Repeatability	≤±0.003°

# 中空旋转平台感应片和感应器安装示意图 Hollow rotating platform induction sheet and sensor installation diagram

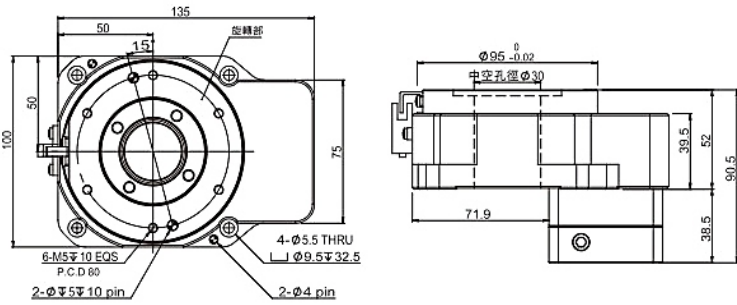
原点传感器套件: JHRS系列搭配  
Origin Sensor kit: JHRS series collocation



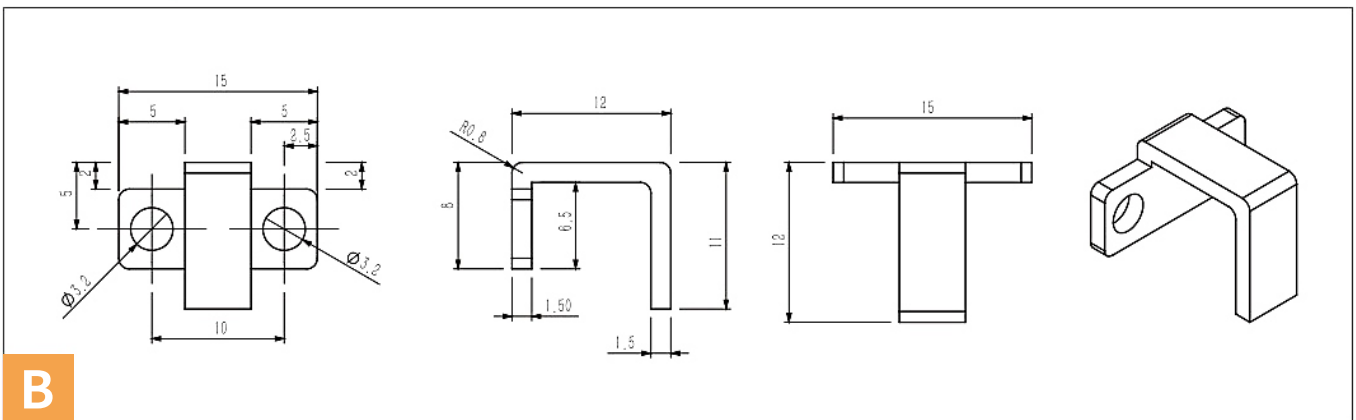
JHRS-系统搭配感应片  
JHRS series with sensor



JHRT 系统搭配感应片  
JHRT series with sensor



JHRT系统搭配感应片  
JHRT series with sensor



Actuator/Linear Guide Rail/Goniometer Stage/  
Motorized Stage/Dovetail Stage/Manual Stage/Hollow Rotary Stage



**DONGGUAN C&K MECHATRONIX CO., LTD.**  
ADDRESS: Qiao Xin West Road, The 2nd Cross,  
Qiao Tou, Dongguan, China  
TEL: 0769-87000969-815  
FAX: 0769-87000929  
WEB: <http://www.dgchengkun.com/>