

TE Series

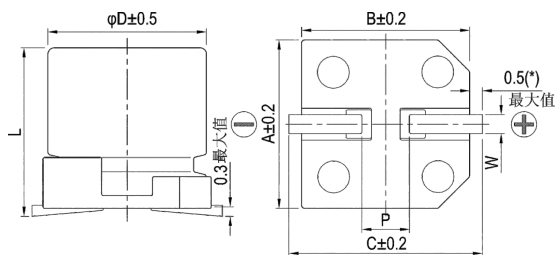
- Designed for surface mounting on high density PC board
- Load life 2,000 hours at 105°C
- RoHS Compliant



◆ SPECIFICATIONS

Item	Performance Characteristics												
Category Temperature Range	-40 ~ +105°C												
Working Voltage Range	6.3 ~ 450Vdc												
Capacitance Range	2.2 ~ 1000 μF												
Capacitance Tolerance	±20% (at 20°C and 120Hz)												
Dissipation Factor (tanδ) (at 20°C, 120Hz)	Rated Voltage (V)	6.3	10	16	25	35	50	63	80	100	160 ~ 250	400 ~ 450	
	Tanδ (Max)	05×08~06×08	0.30	0.24	0.20	0.16	0.14	0.12	0.12	0.12	0.12	0.15	0.20
Leakage Current	6.3~100Vdc						160~450Vdc						
	I ≤ 0.01CV or 3μA, Which is greater(2minutes)						I ≤ 0.04CV + 100μA (1minutes)						
Low Temperature Characteristics Impedance Ratio(MAX)	I: Leakage current (μA) C: Rated capacitance (μF) V: Rated voltage (V)												
	Rated Voltage (V)	6.3	10	16	25	35	50	63	80	100	160 ~ 250	400 ~ 450	
	Z(-25°C)/Z(+20°C)	4	3	2	2	2	2	2	2	2	6	6	(at 120Hz)
Z(-40°C)/Z(+20°C)	6	4	3	3	3	3	3	3	3	10	18		
Endurance	The following specifications shall be satisfied when the capacitors are restored to 20°C after subjected to DC voltage with the rated ripple current is applied for 2,000 hours at 105°C.												
	Capacitance change	≒ ±20% of the initial value											
	Dissipation factor(tanδ)	≒ 200% of the specified value											
	Leakage current	≒ specified value											
Shelf Life	The following requirements shall be satisfied when the capacitor are restored to 20°C after the rated voltage applied for 1,000 hours at 105°C without voltage applied.												
	Capacitance change	≒ ±20% of the initial value											
	Dissipation factor(tanδ)	≒ 200% of the specified value											
	Leakage current	≒ 200% of the specified value											

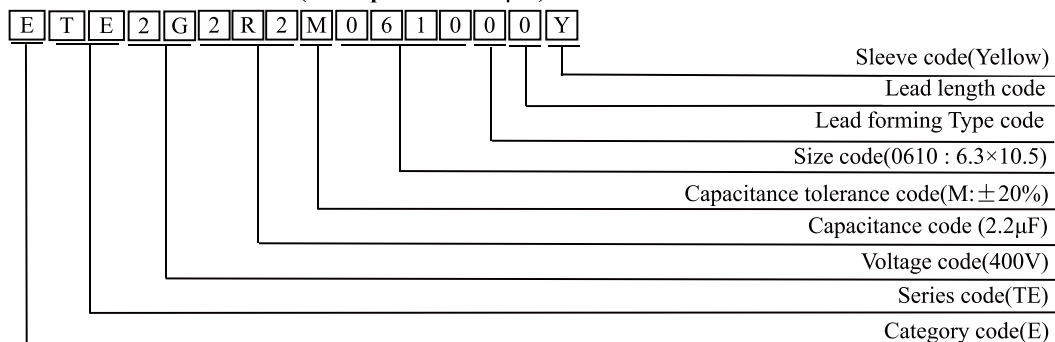
◆ DIMENSIONS (mm)



Note:(*):5~6.3φ 0.4Max

Size	D	L	A	B	C	W	P
05×08	5	7.7±0.5	5.3	5.3	5.9	0.5~0.8	1.4
06×08	6.3	7.7±0.5	6.6	6.6	7.2	0.5~0.8	1.9
06×10	6.3	10.5±0.5	6.6	6.6	7.2	0.5~0.8	1.9
08×10	8	10.5±0.5	8.3	8.3	9.0	0.7~1.1	3.1
08×12	8	12.5±0.5	8.3	8.3	9.0	0.7~1.1	3.1
08×14	8	13.5±0.5	8.3	8.3	9.0	0.7~1.1	3.1
08×16	8	15.5±0.5	8.3	8.3	9.0	0.7~1.1	3.1
10×10	10	10.5±0.5	10.3	10.3	11.0	0.7~1.1	4.5
10×12	10	12.5±0.5	10.3	10.3	11.0	0.7~1.1	4.5
10×14	10	13.5±0.5	10.3	10.3	11.0	0.7~1.1	4.5
10×16	10	16.5±0.5	10.3	10.3	11.0	0.7~1.1	4.5
12×14	12.5	13.5±1.0	13.0	13.0	13.7	1.0~1.3	4.5
12×16	12.5	16.0±1.0	13.0	13.0	13.7	1.0~1.3	4.5
12×21	12.5	21.0±1.0	13.0	13.0	13.7	1.0~1.3	4.5

◆ PART NUMBER SYSTEM(Example : 400V 2.2μF)



TE Series

◆ Standard Ratings

WV (Vdc)	Cap (μF)	Case Size ΦD×L (mm)	Max.Rated ripple current @105°C 100KHz
6.3	100	05×08	105
	220	06×08	160
	330	08×10	340
	1000	10×10	860
10	33	05×08	105
	100	06×08	175
	220	06×08	180
	330	08×10	340
	470	08×10	360
	820	10×10	860
16	47	05×08	105
	100	05×08	175
	150	06×08	190
	220	08×10	500
	330	08×10	545
25	470	10×10	800
	33	05×08	105
	47	06×08	180
	100	06×08	205
	220	08×10	550
35	330	10×10	780
	470	10×12	875
	10	05×08	105
	22	05×08	110
	47	06×08	275
50	100	08×10	575
	220	10×10	835
	330	10×12	900
	10	06×08	120
	22	06×08	175
	33	06×08	180
	47	06×08	190
	47	08×10	540
63	100	08×10	600
	100	10×10	700
	220	10×12	800
	220	12×14	900
	330	12×16	1180
	10	05×08	85
	22	06×08	150
	33	08×10	375
80	47	08×10	450
	100	10×10	575
	220	12×14	890
	10	06×08	140
	22	08×10	375
	33	08×10	450
100	47	10×10	575
	100	10×12	600
	150	12×14	800
	220	12×16	960

WV (Vdc)	Cap (μF)	Case Size ΦD×L (mm)	Max.Rated ripple current @105°C 100KHz
100	4.7	05×08	70
	10	06×08	135
	22	08×10	345
	33	10×10	560
	47	10×10	575
	100	12×14	680
160	10	10×10	81
	15	08×12	136
	22	10×12	170
	33	10×14	215
	47	10×16	380
	68	12×21	630
200	100	12×21	700
	10	08×10	118
	10	10×10	130
	15	08×14	170
	22	10×14	200
	33	10×16	260
250	47	12×21	440
	68	12×21	640
	2.2	06×10	56
	3.3	06×10	68
	4.7	08×10	96
	10	08×12	166
400	22	10×16	300
	33	12×21	420
	47	12×21	460
	2.2	06×10	44
	3.3	08×10	64
	4.7	08×10	78
	5.6	08×12	96
	6.8	08×14	108
450	8.2	08×16	130
	10	10×14	140
	15	10×16	174
	22	12×21	235
	2.2	08×10	45
	2.2	10×10	50
	3.3	10×10	72
	4.7	10×10	80
470	6.8	10×14	100
	10	10×16	136
	15	12×21	180
	22	12×21	218

◆ RIRIPPLE CURRENT MULTIPLIERS
Frequency Multipliers

Vdc	Frequency (Hz)			
	120	1K	10K	100K
6.3 ~ 450	0.50	0.80	0.90	1.00