



TEST REPORT

LAB NO. : (9322)227-1766
DATE : Aug 24, 2022
PAGE : 1 OF 35

APPLICANT : **FOSHAN SHUNDE XIANGTAI SCAVENGING MATERIAL INDUSTRIAL CO., LTD**
BLOCK 1, NO.9 INDUSTRIAL ROAD, FENGJIAN INDUSTRIAL ZONE, XINGTAN TOWN, SHUNDE DISTRICT, FOSHAN CITY, GUANGDONG, P. R. CHINA

CONTACT PERSON : /

DATE OF SUBMISSION : Aug 15, 2022

TEST PERIOD : Aug 15, 2022 to Aug 22, 2022

SAMPLE DESCRIPTION : Air Purifier

Color: /

Style no. / Model no.: XT-KJ1200G, XT-KJ2000, XT-KJ1500, XT-KJ1200, XT-KJ800, XT-KJ2000G, XT-KJ1500G, XT-KJ800G, ASP-C2, ASP-C2s, ASP-C2x, ALR-L2, AT-XL2

P.O. No.: /

Country of Origin: /

Country of Destination: /

MANUFACTURER : Foshan Shunde Xiangtai Scavenging Material Industrial CO., LTD
Block 1, No.9 Industrial Road, Fengjian Industrial Zone, Xingtan Town, Shunde District, Foshan City, Guangdong, P.R.China

SUMMARY OF TEST RESULTS

TEST REQUESTED	CONCLUSION	REMARK
Compliance Test - European Parliament and Council Directive 2011/65/EU on the Restriction of the Use of Certain Hazardous Substances in Electrical and Electronic Equipment (RoHS) with its Amendments (EU) 2015/863	PASS	

RW

Bureau Veritas Consumer Products Services (Guangzhou) Co., Ltd
No. 183, Shinan Road, Meilin Plaza, Dongchong, Nansha, Guangzhou, Guangdong Province, China 511453
Tel: (86) 20 2290 2088 Fax: (86) 20 3490 9303
Email: BVCPs_pyinfo@bureauveritas.com
Website: cps.bureauveritas.com

This report is governed by, and incorporates by reference, the Conditions of Testing as posted at the date of issuance of this report at <http://www.bureauveritas.com/home/about-us/our-business/cps/about-us/terms-conditions/> and is intended for your exclusive use. Any copying or replication of this report to or for any other person or entity, or use of our name or trademark, is permitted only with our prior written permission. This report sets forth our findings solely with respect to the test samples identified herein. The results set forth in this report are not indicative or representative of the quality or characteristics of the lot from which a test sample was taken or any similar or identical product unless specifically and expressly noted. Our report includes all of the tests requested by you and the results thereof based upon the information that you provided to us. Measurement uncertainty is only provided upon request for accredited tests. Statements of conformity are based on simple acceptance criteria without taking measurement uncertainty into account, unless otherwise requested in writing. You have 60 days from date of issuance of this report to notify us of any material error or omission caused by our negligence or if you require measurement uncertainty; provided, however, that such notice shall be in writing and shall specifically address the issue you wish to raise. A failure to raise such issue within the prescribed time shall constitute your unqualified acceptance of the completeness of this report, the tests conducted and the correctness of the report contents.

The content of this PDF file is in accordance with the original issued reports for reference only.
This Test Report cannot be reproduced, except in full, without prior written permission of the company.



LAB NO. : (9322)227-1766
DATE : Aug 24, 2022
PAGE : 2 OF 35

BUREAU VERITAS CONSUMER PRODUCTS SERVICES (GUANGZHOU) CO., LTD

KENNY WANG
OPERATION MANAGER



REMARK

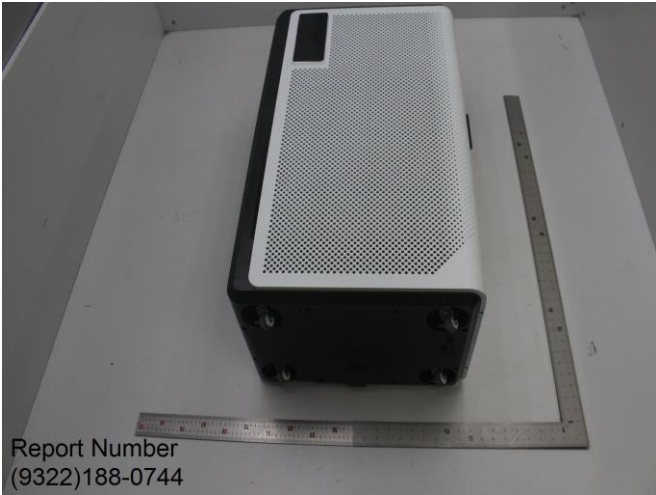
If there are questions or concerns on this report, please contact the following persons:

- a) GENERAL TEL: (86)755 83437287
FAX: (86)755 83439100
- b) BUSINESS SZ TEL: (86)755 21534695
FAX: (86)755 83439100
BUSINESS GZ TEL: (86) 20 87148525
FAX: (86) 20 87148528
- EMAIL: eechemical.sc@bureauveritas.com
WEBSITE: cps.bureauveritas.cn



LAB NO. : (9322)227-1766
DATE : Aug 24, 2022
PAGE : 3 OF 35

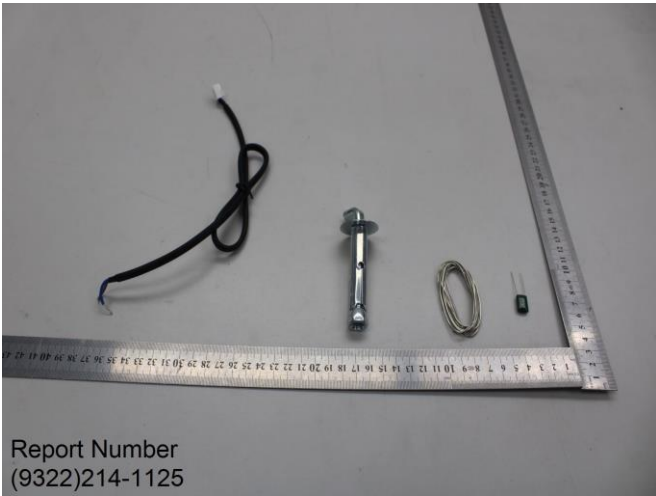
Photo of the Submitted Sample



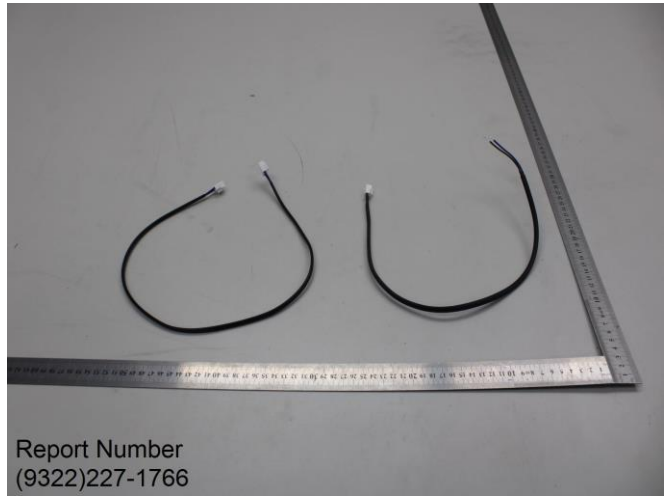
Report Number
(9322)188-0744



Report Number
(9322)188-0744

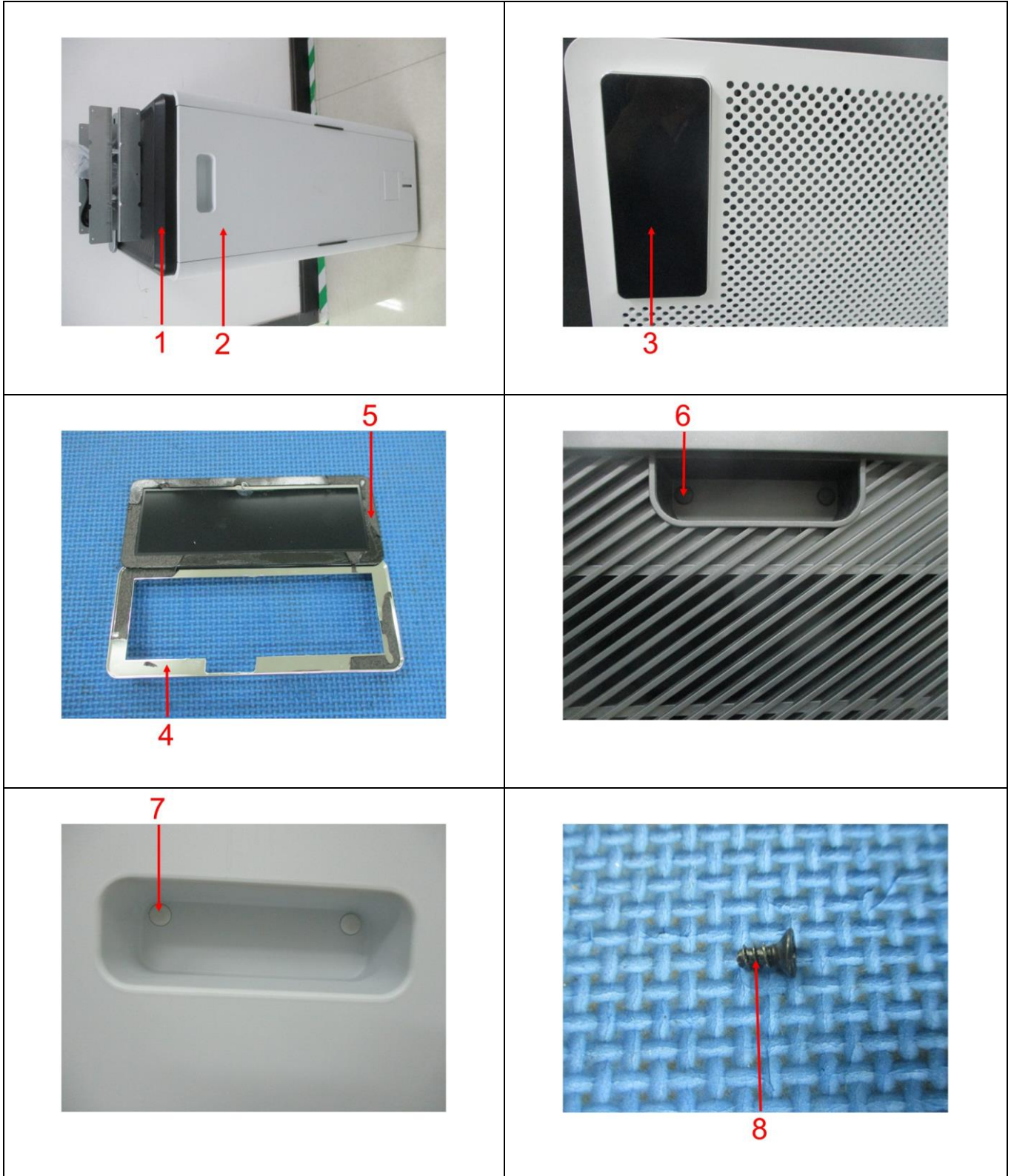


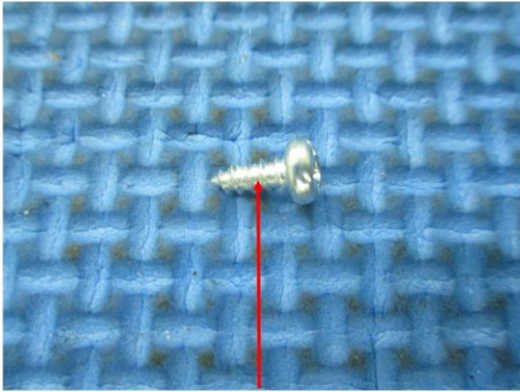
Report Number
(9322)214-1125



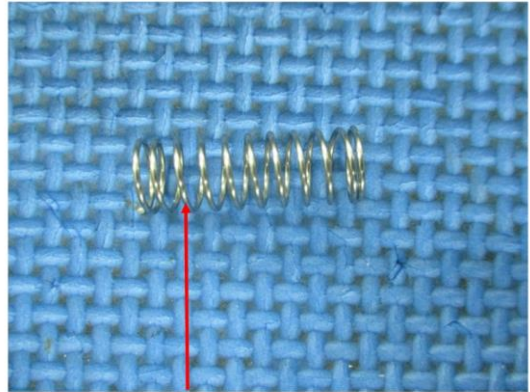
Report Number
(9322)227-1766

Photograph of test item(s)

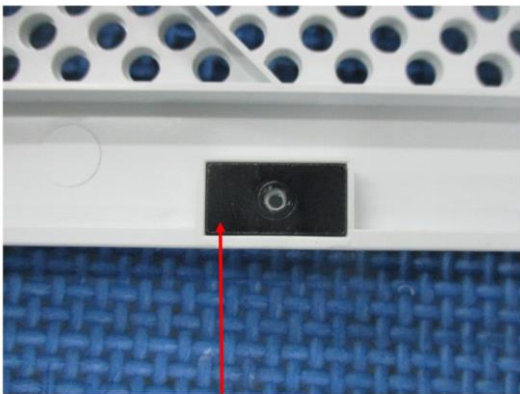




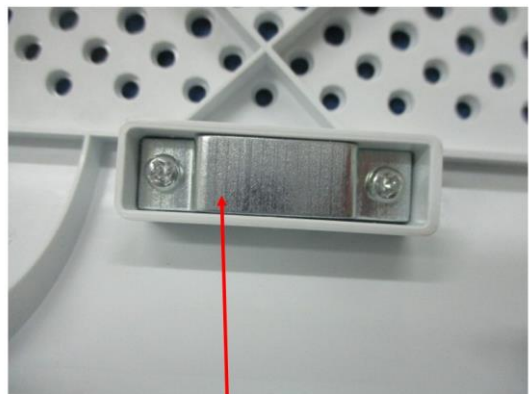
9



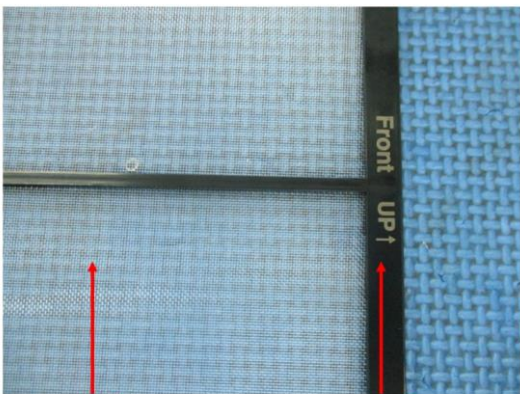
10



11

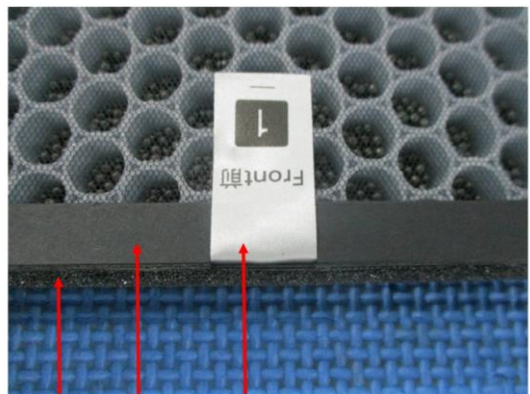


12



13

14



15

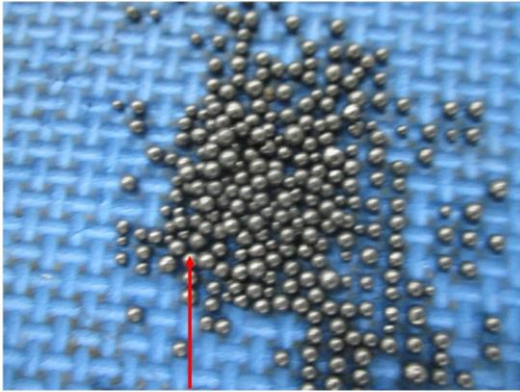
16

17

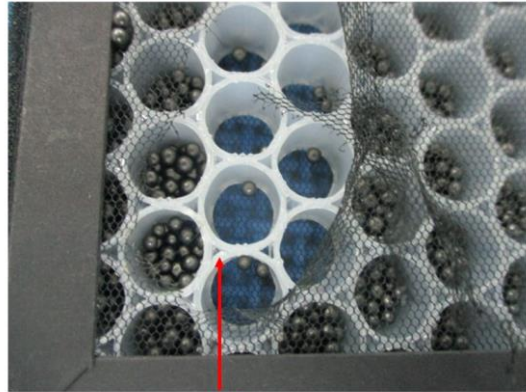


**BUREAU
VERITAS**

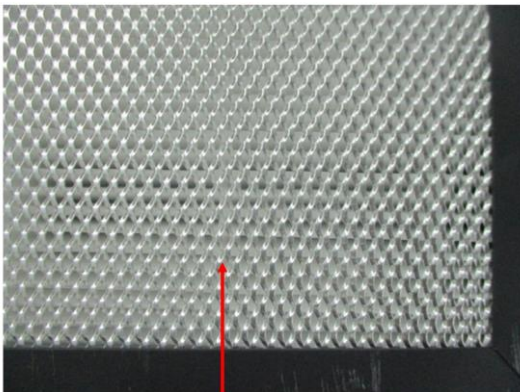
LAB NO. : (9322)227-1766
DATE : Aug 24, 2022
PAGE : 6 OF 35



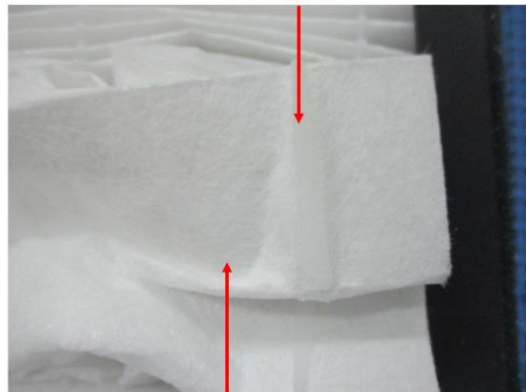
18



19

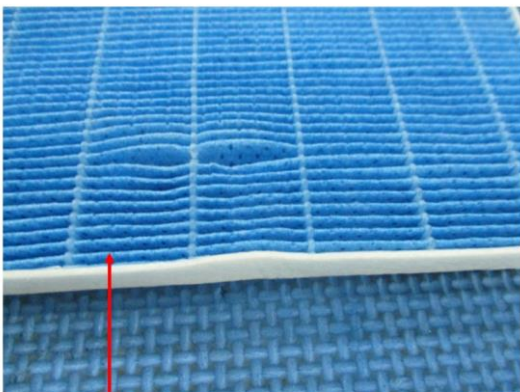


20



22

21



23

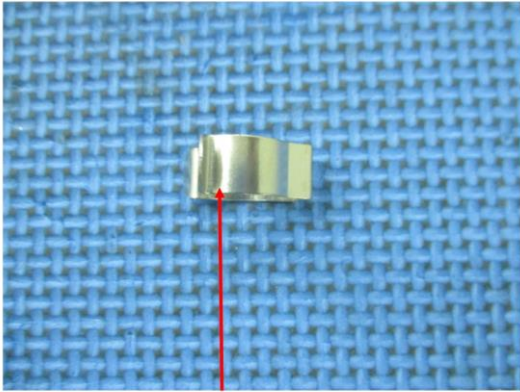


24-25

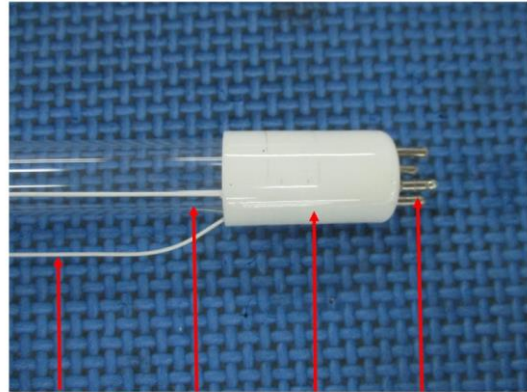


**BUREAU
VERITAS**

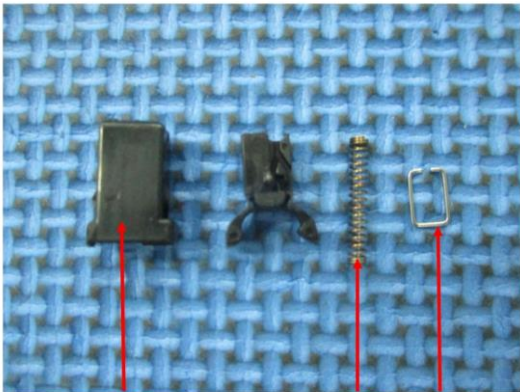
LAB NO. : (9322)227-1766
DATE : Aug 24, 2022
PAGE : 7 OF 35



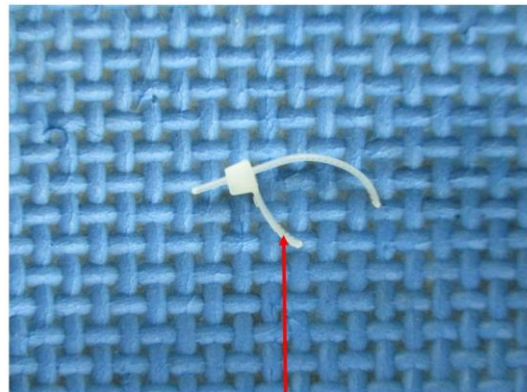
26



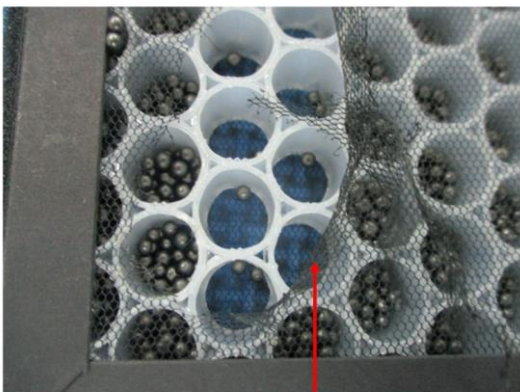
27-28 29 30 31



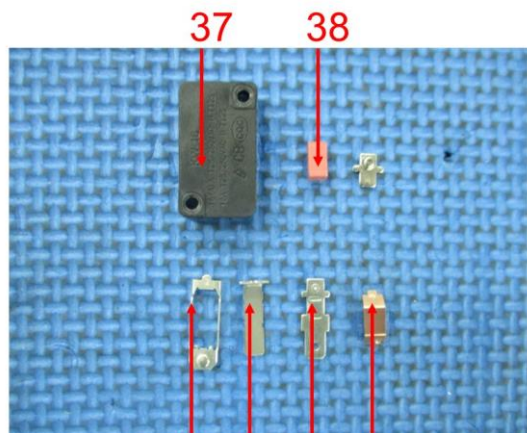
32 33 34



35



36

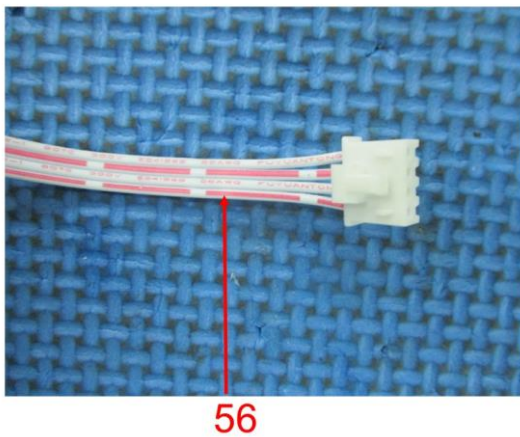
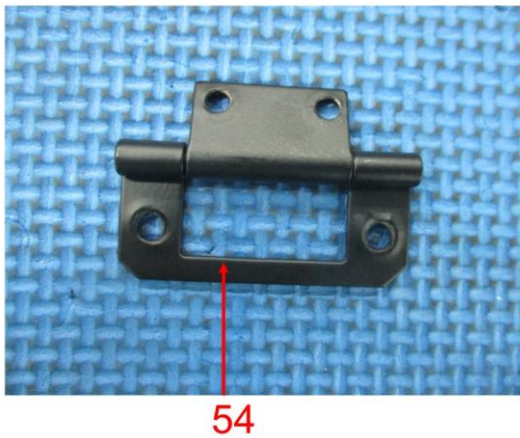
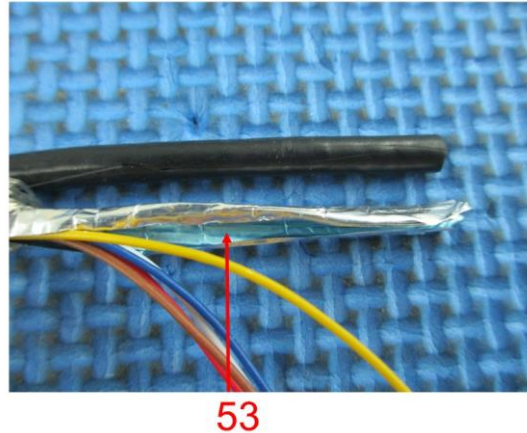
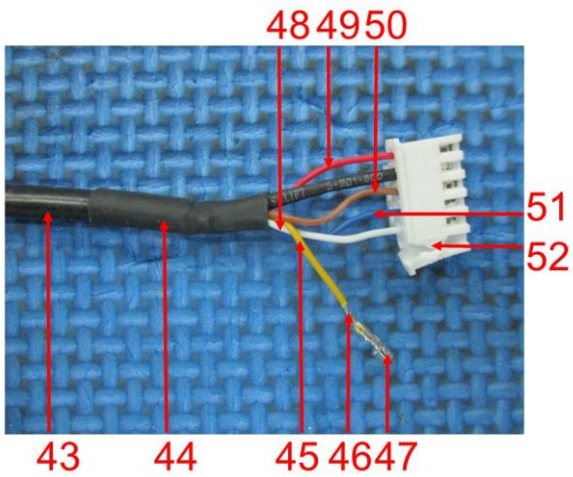


37 38
39 40 41 42



**BUREAU
VERITAS**

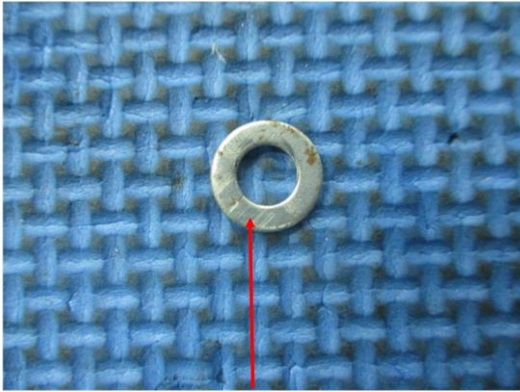
LAB NO. : (9322)227-1766
DATE : Aug 24, 2022
PAGE : 8 OF 35



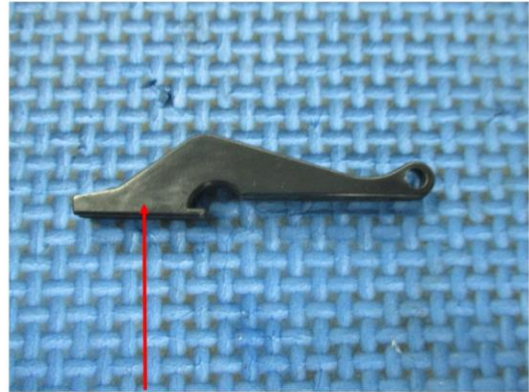


**BUREAU
VERITAS**

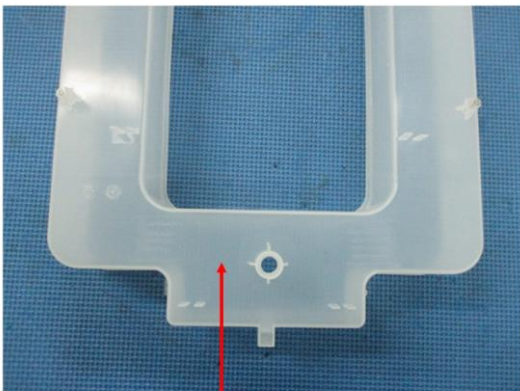
LAB NO. : (9322)227-1766
DATE : Aug 24, 2022
PAGE : 9 OF 35



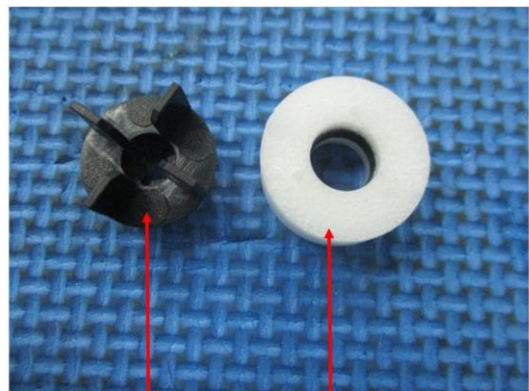
58



59

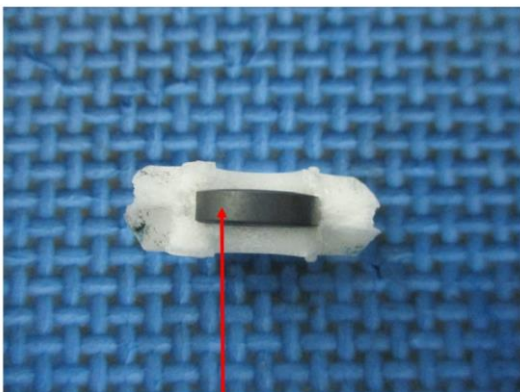


60

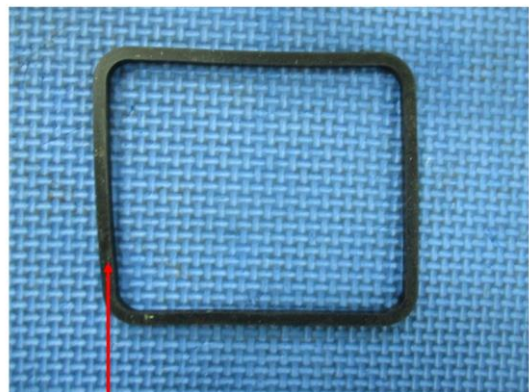


61

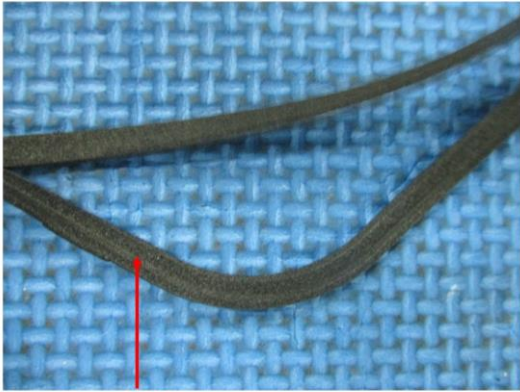
62



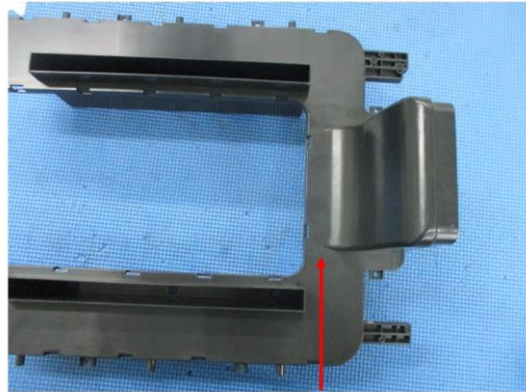
63



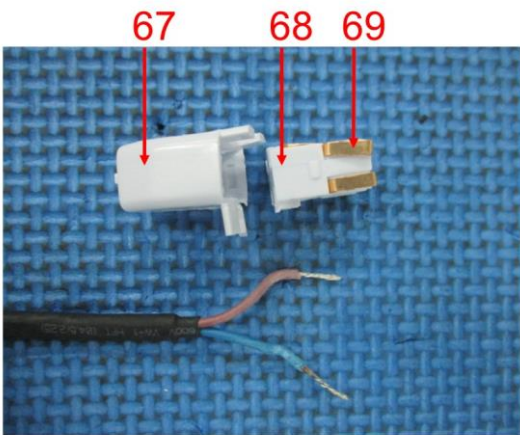
64



65



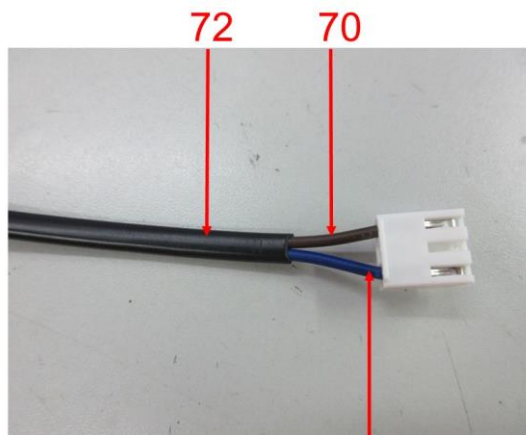
66



67

68

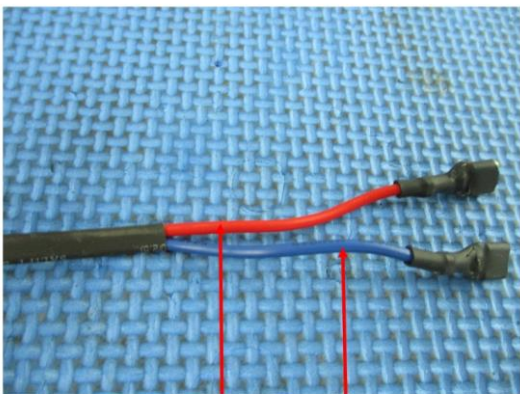
69



72

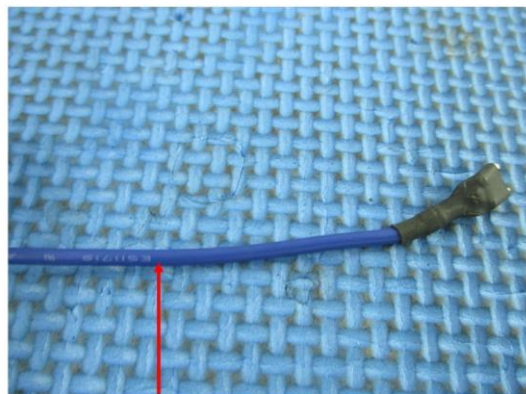
70

71

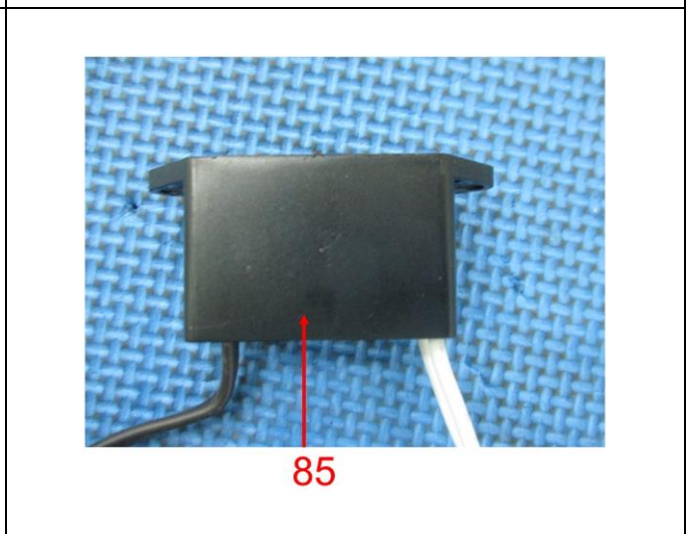
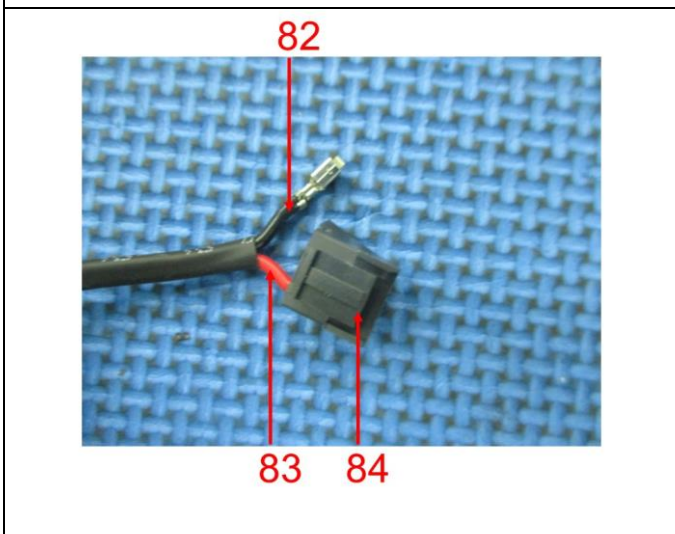
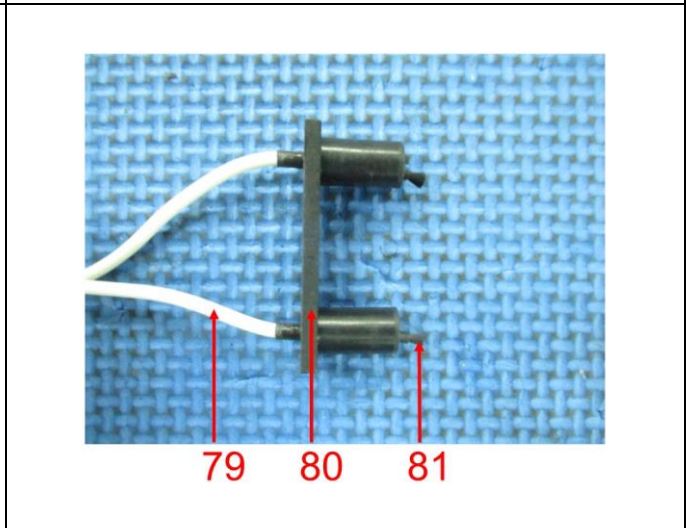
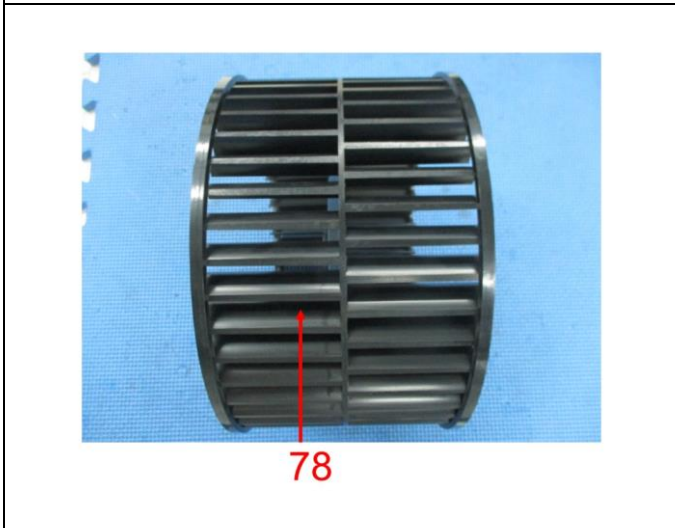
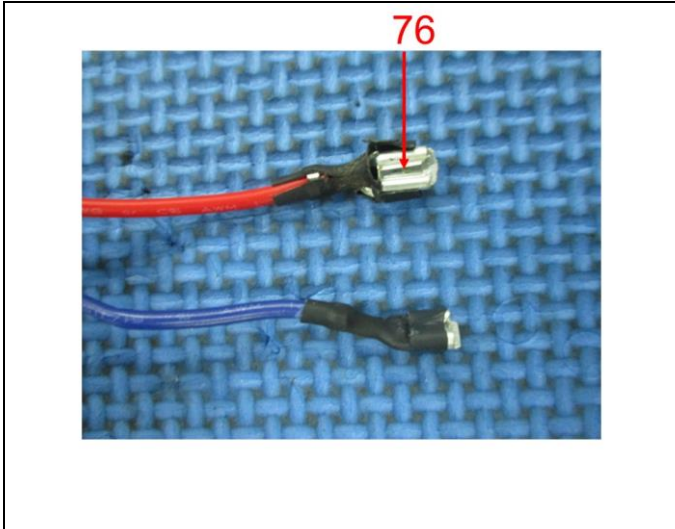


73

74



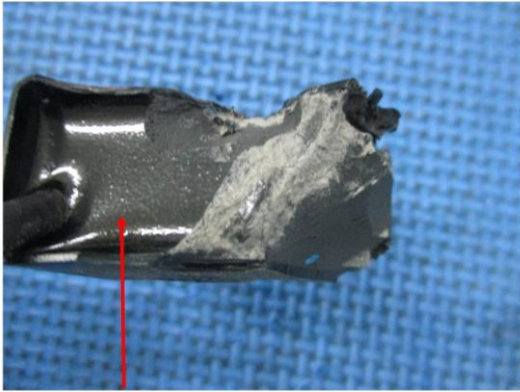
75



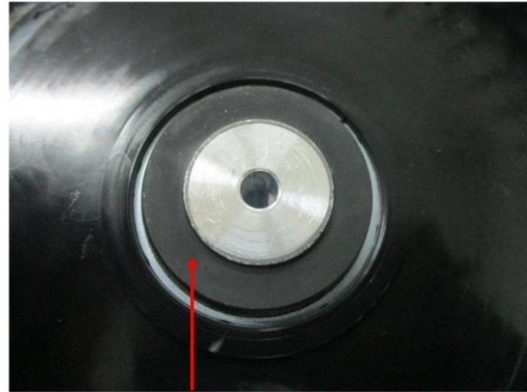


**BUREAU
VERITAS**

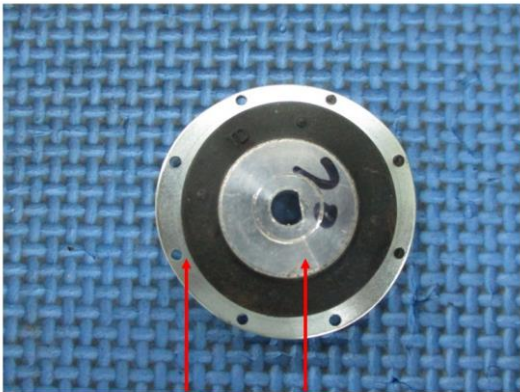
LAB NO. : (9322)227-1766
DATE : Aug 24, 2022
PAGE : 12 OF 35



86



87

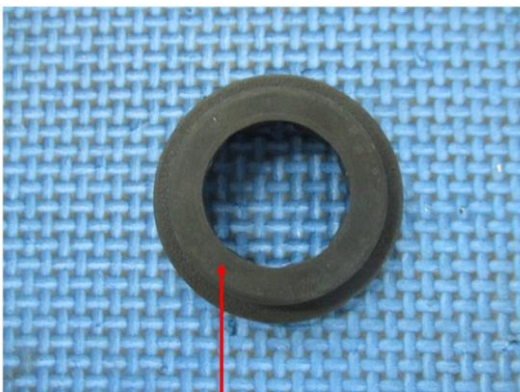


88

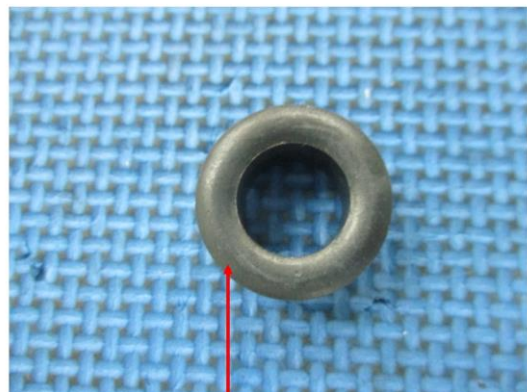
89



90



91

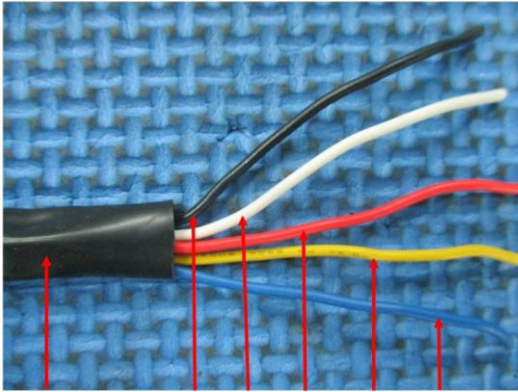


92



**BUREAU
VERITAS**

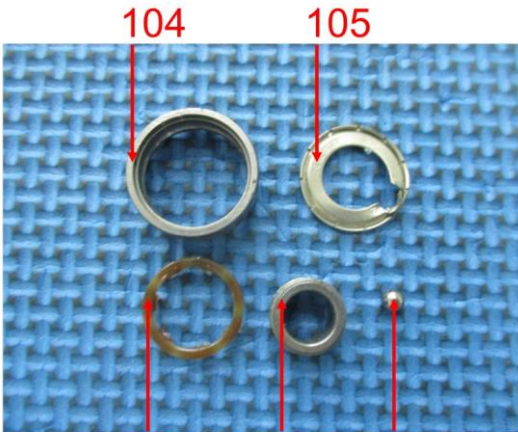
LAB NO. : (9322)227-1766
DATE : Aug 24, 2022
PAGE : 13 OF 35



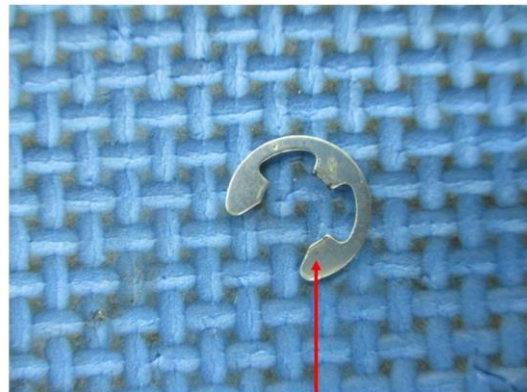
93 94 95 96 97 98



99 100



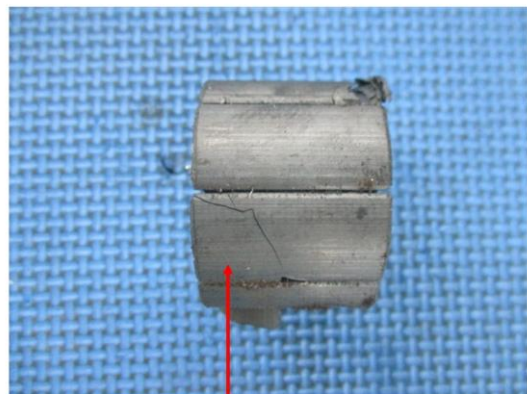
104 105
101 102 103



106



107 108

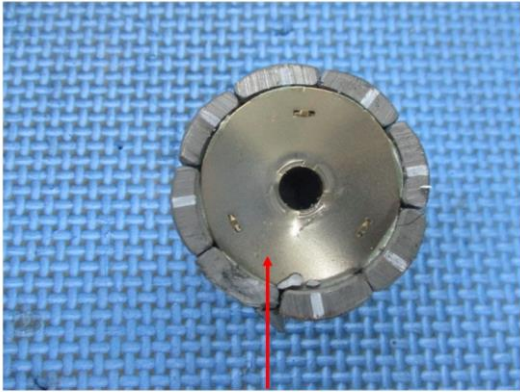


109

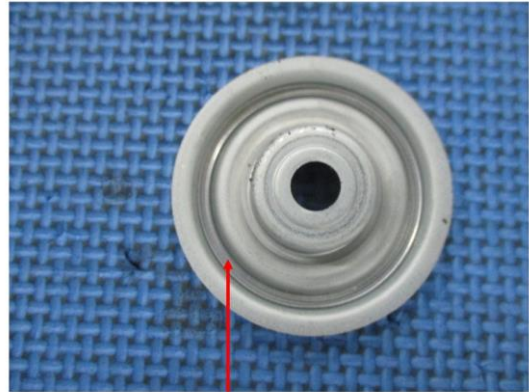


**BUREAU
VERITAS**

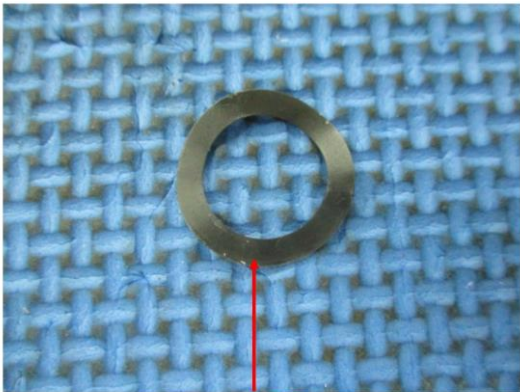
LAB NO. : (9322)227-1766
DATE : Aug 24, 2022
PAGE : 14 OF 35



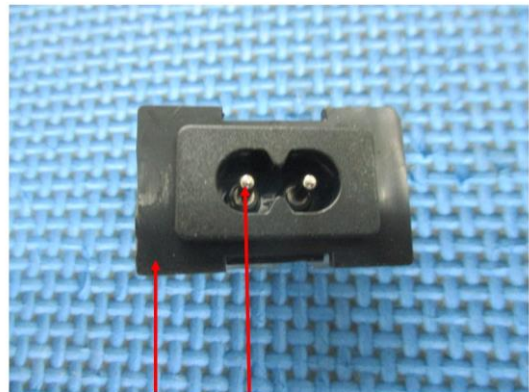
110



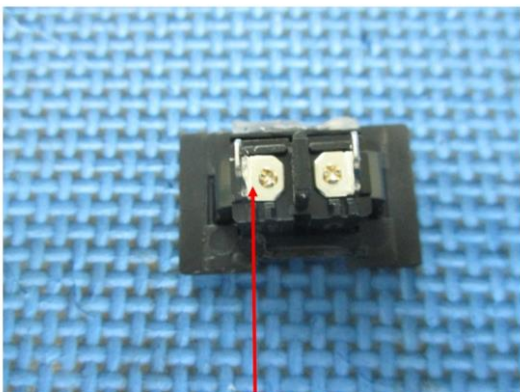
111



112



113 114



115

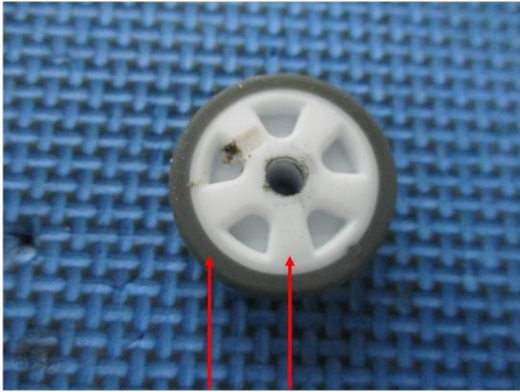


116

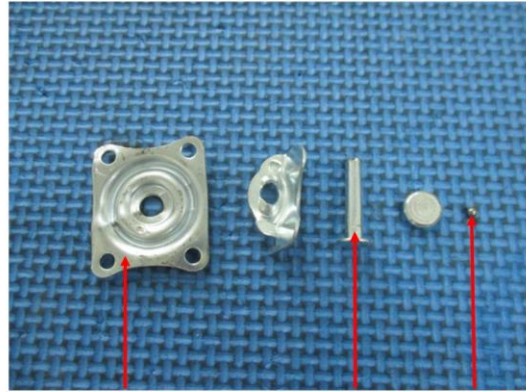


**BUREAU
VERITAS**

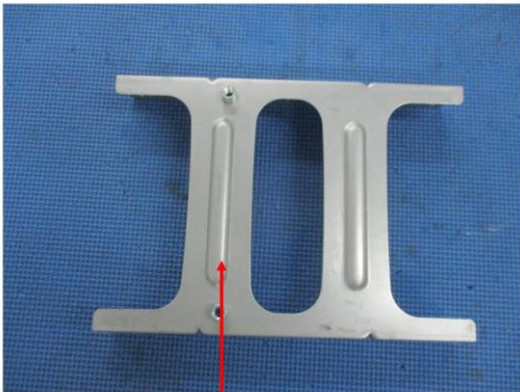
LAB NO. : (9322)227-1766
DATE : Aug 24, 2022
PAGE : 15 OF 35



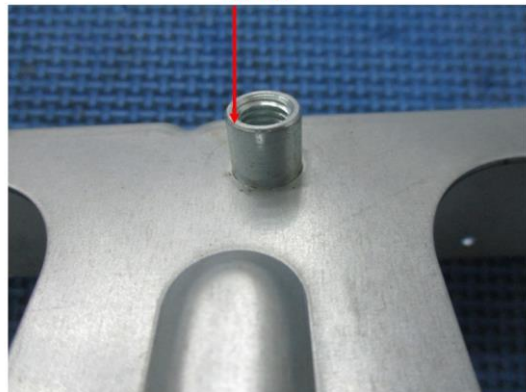
117 118



119 120 121



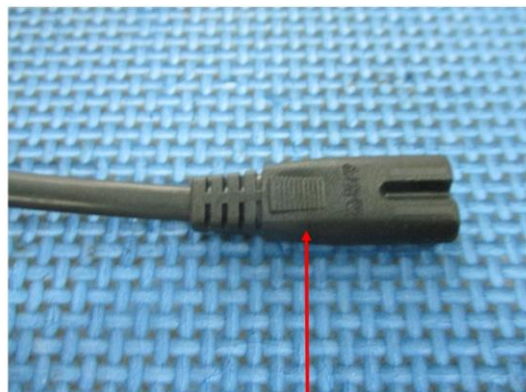
122



123



124

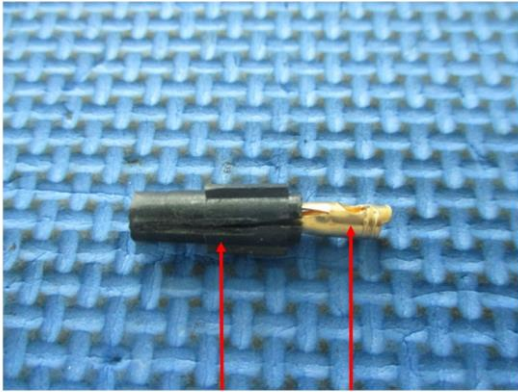


125

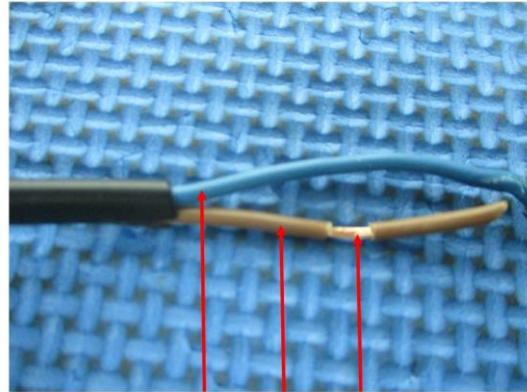


**BUREAU
VERITAS**

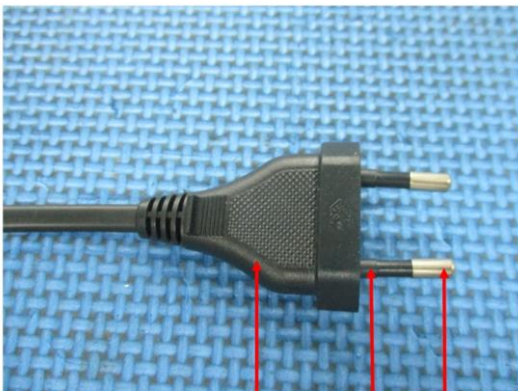
LAB NO. : (9322)227-1766
DATE : Aug 24, 2022
PAGE : 16 OF 35



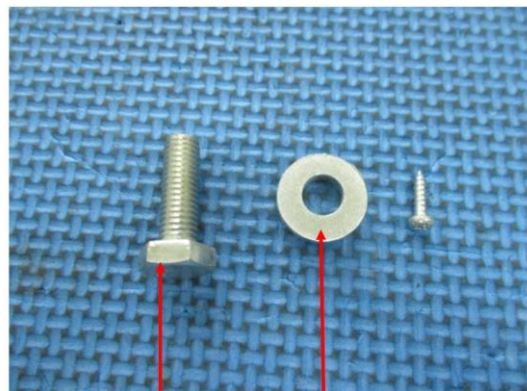
126 127



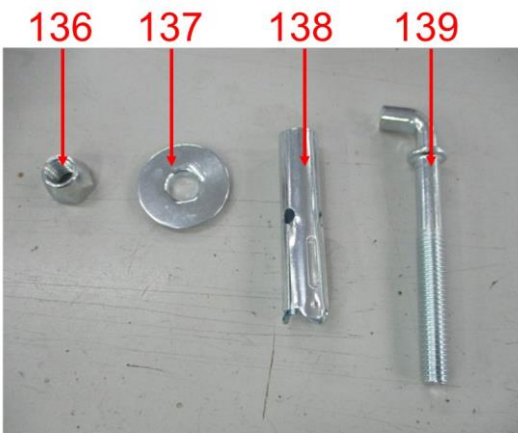
128 129 130



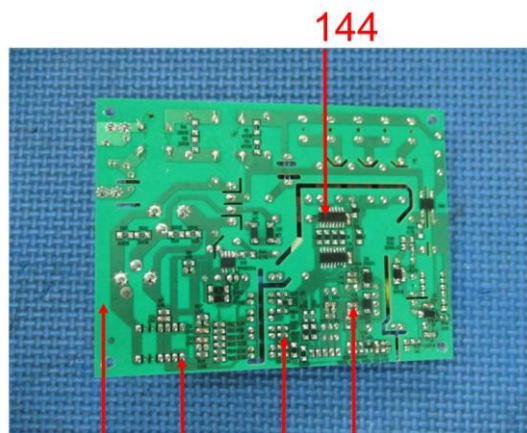
131 132 133



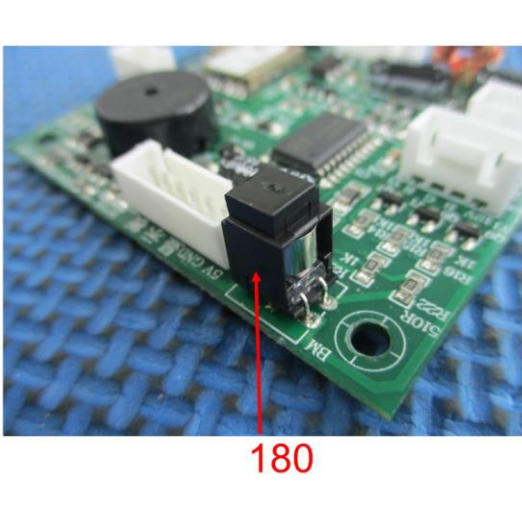
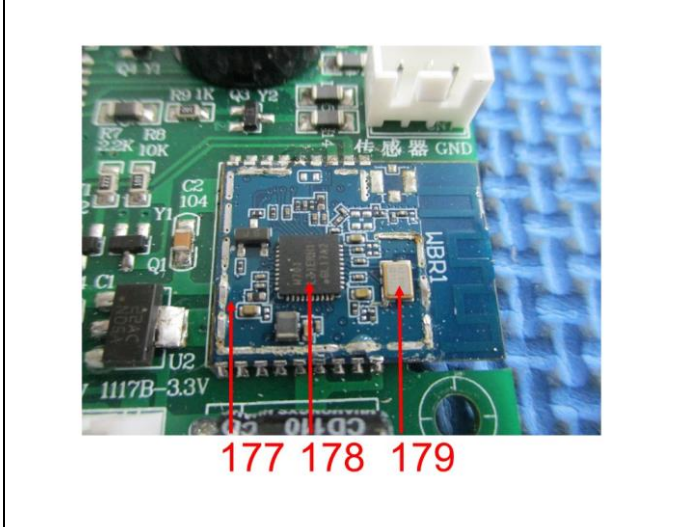
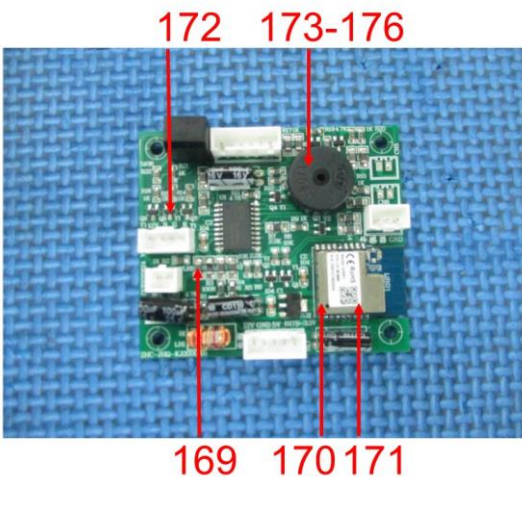
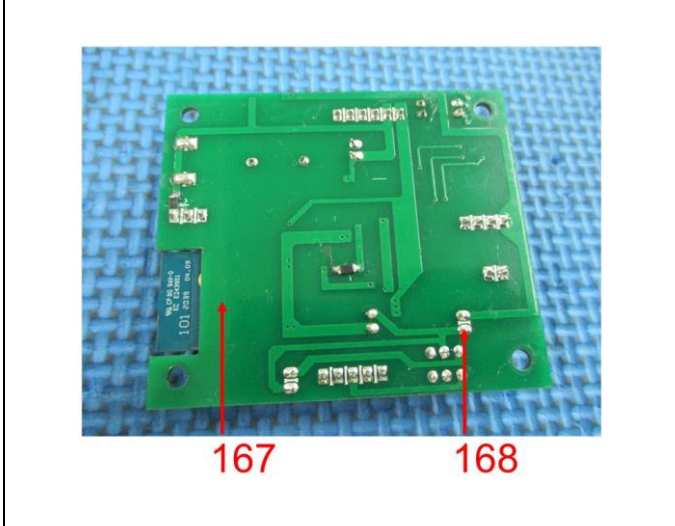
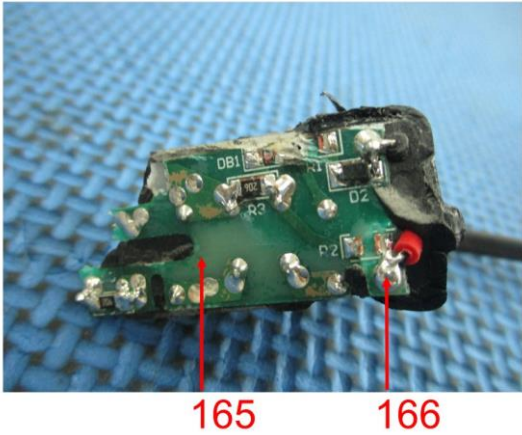
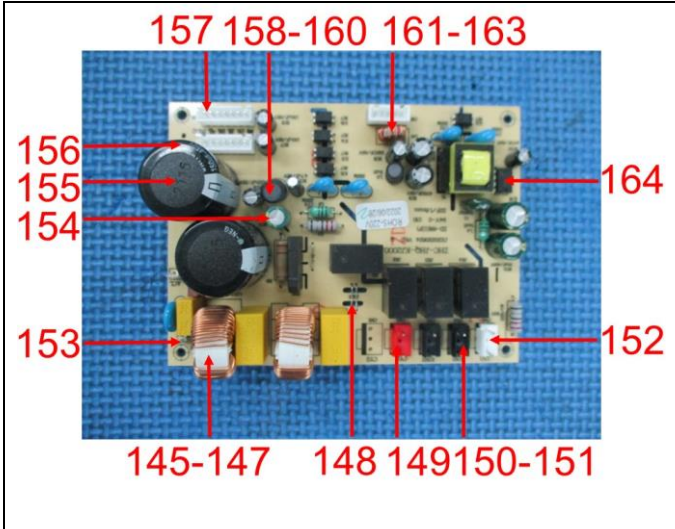
134 135



136 137 138 139



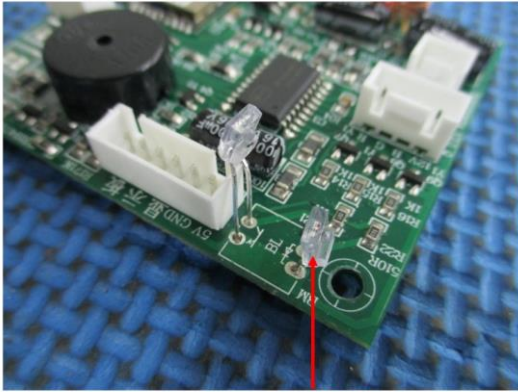
144
140 141 142 143



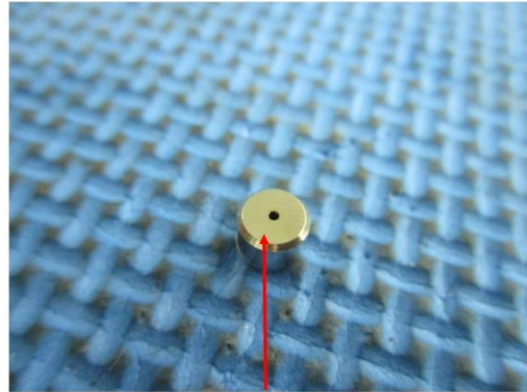


**BUREAU
VERITAS**

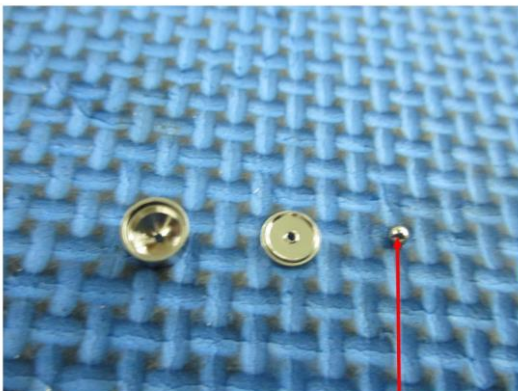
LAB NO. : (9322)227-1766
DATE : Aug 24, 2022
PAGE : 18 OF 35



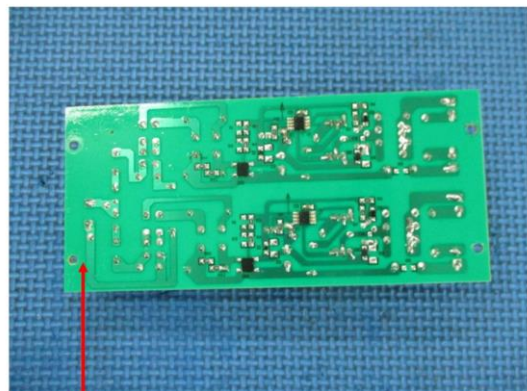
181



182



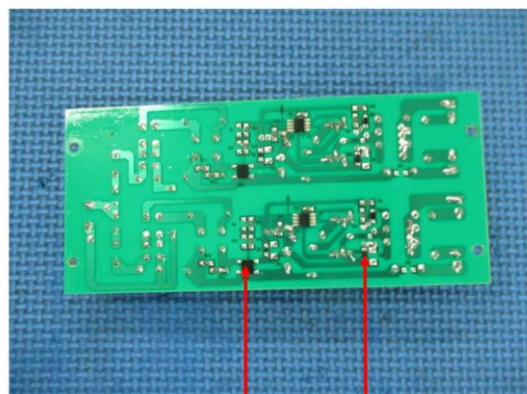
183



184



185



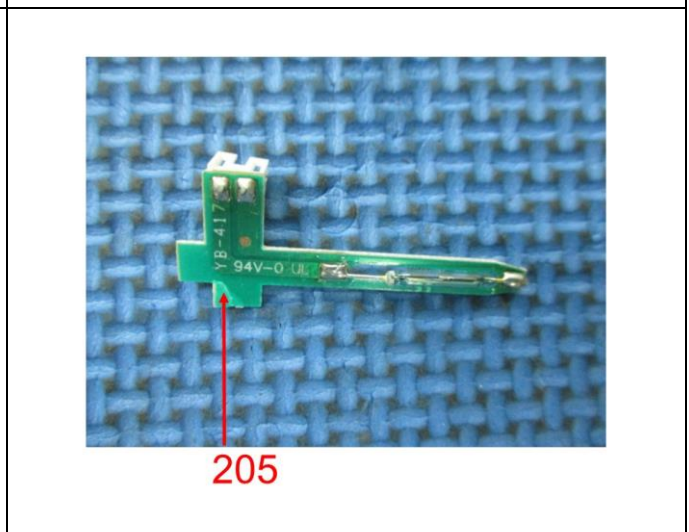
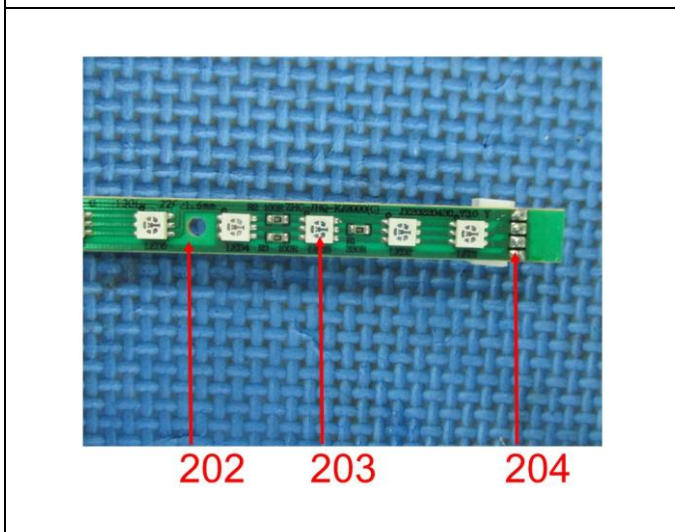
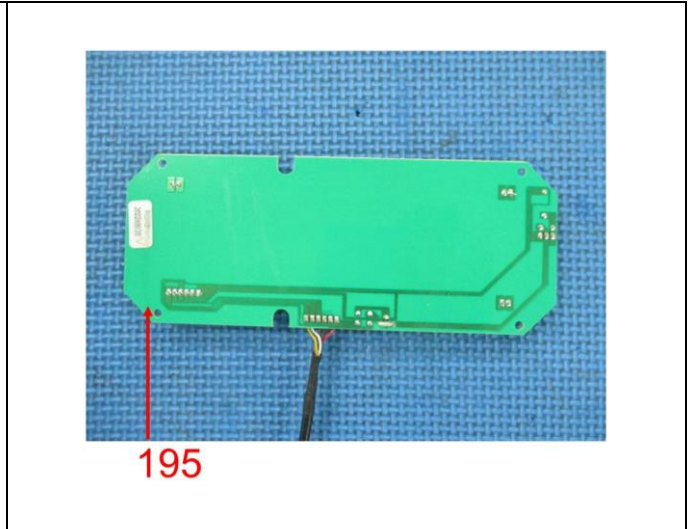
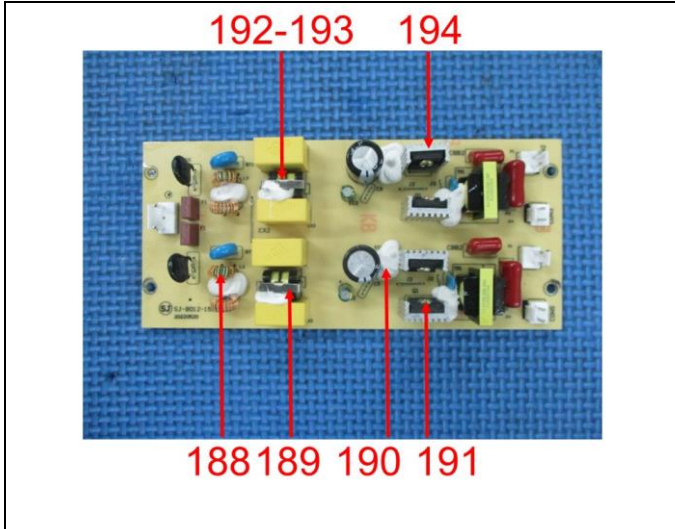
186

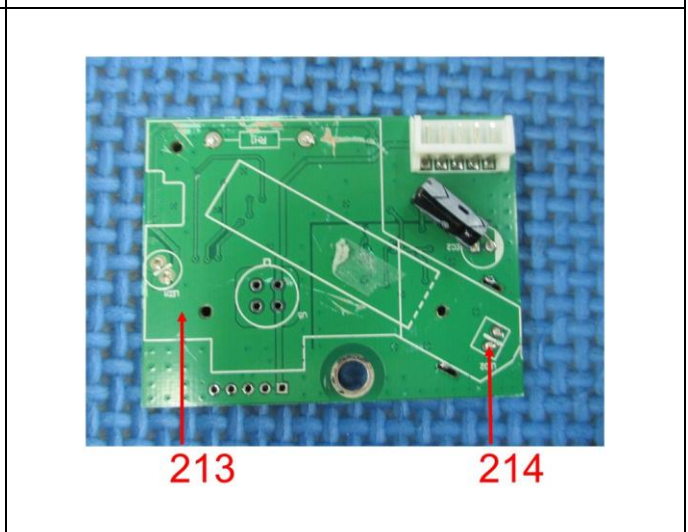
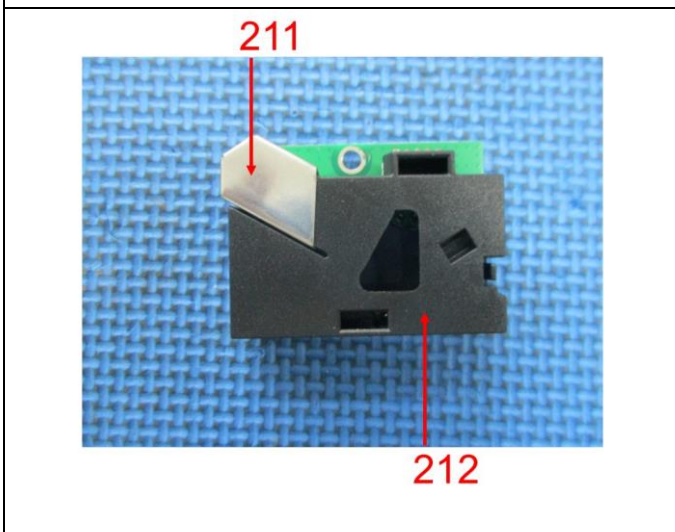
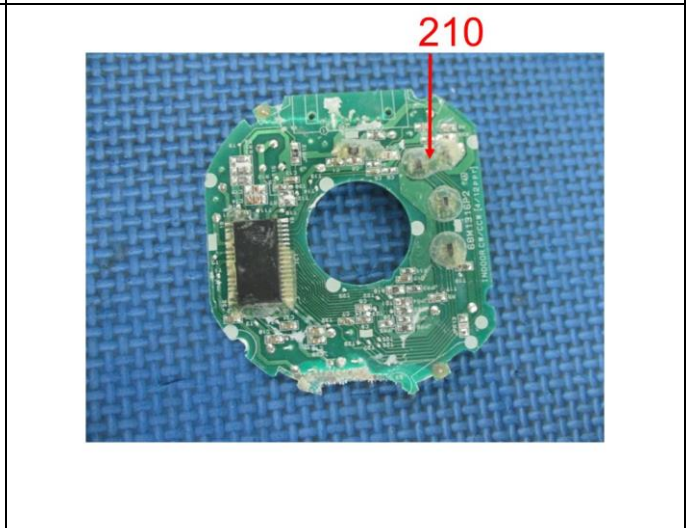
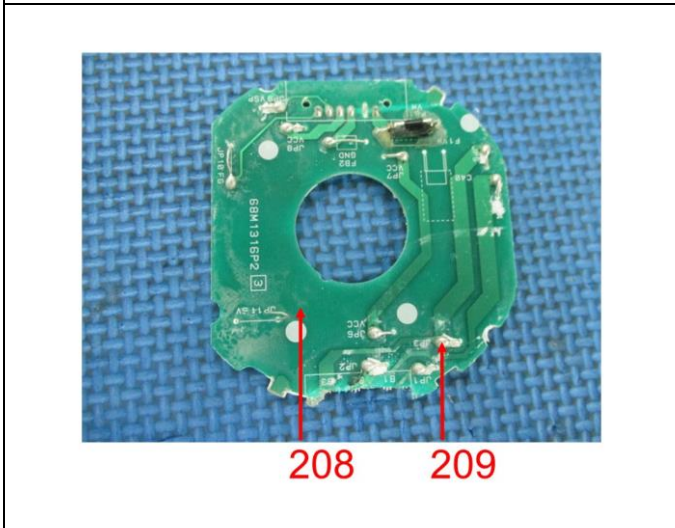
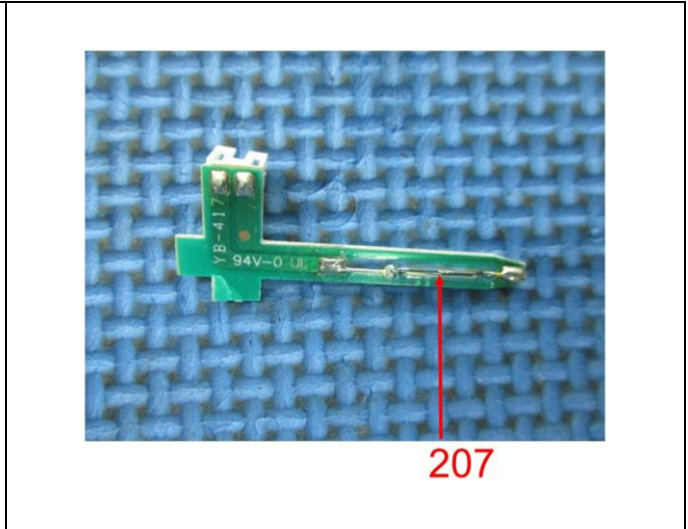
187



**BUREAU
VERITAS**

LAB NO. : (9322)227-1766
DATE : Aug 24, 2022
PAGE : 19 OF 35

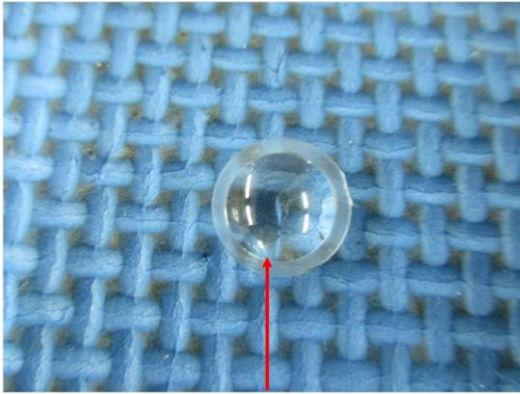




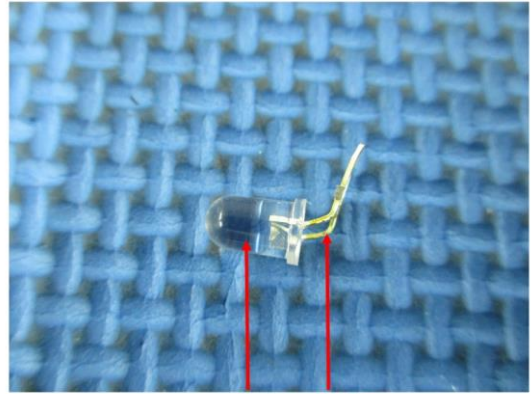


**BUREAU
VERITAS**

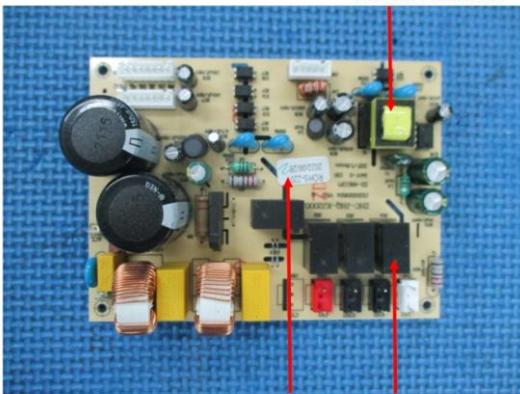
LAB NO. : (9322)227-1766
DATE : Aug 24, 2022
PAGE : 21 OF 35



215

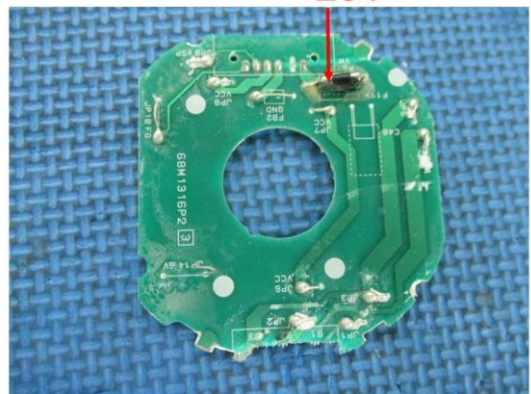


216 217



226-230

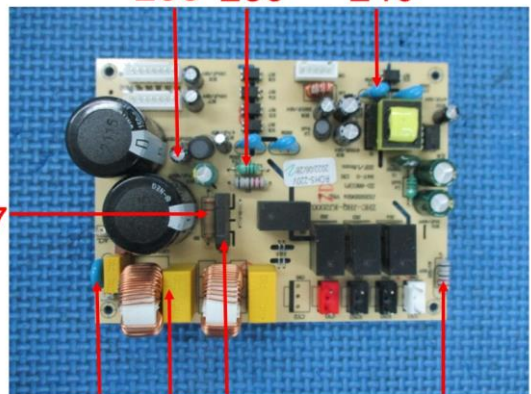
218 219-225



231



232



238 239 240

237

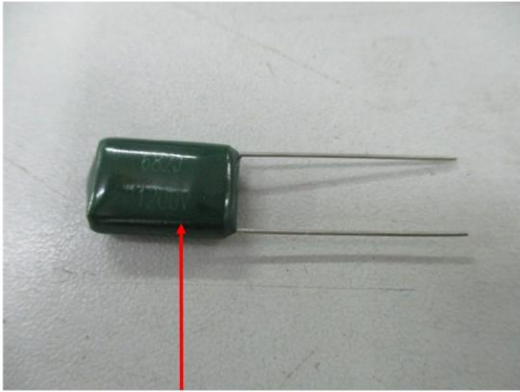
233 234 235

236

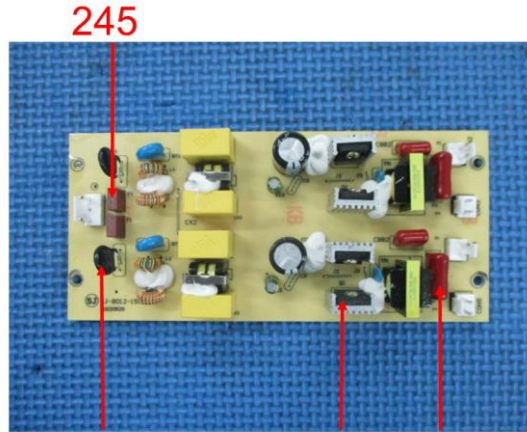


**BUREAU
VERITAS**

LAB NO. : (9322)227-1766
DATE : Aug 24, 2022
PAGE : 22 OF 35



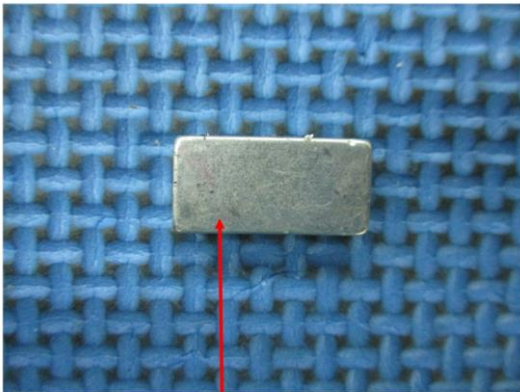
241



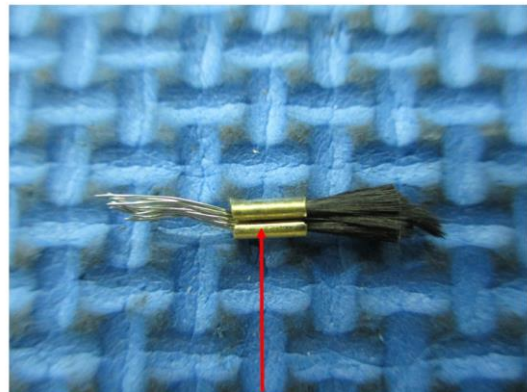
242

243

244



246



247



LAB NO. : (9322)227-1766
 DATE : Aug 24, 2022
 PAGE : 23 OF 35

TEST RESULT

Compliance Test - European Parliament and Council Directive 2011/65/EU on the Restriction of the Use of Certain Hazardous Substances in Electrical and Electronic Equipment (RoHS) with its Amendments (EU) 2015/863

Test Method : See Appendix.

Test Item(s)	Item / Component Description(s) + Location(s)	Style(s)
1	Black plastic (cover)	-
2	White plastic (case)	-
3	Grey/ translucent plastic (screen)	-
4	Silvery plated white plastic (frame)	-
5	Black soft plastic (adhesive tape)	-
6	Black soft plastic (cap)	-
7	White soft plastic (cap)	-
8	Black plated silvery metal (screw)	-
9	Silvery metal (screw)	-
10	Dark silvery metal (spring)	-
11	Silvery metal (plate)	-
12	Silvery metal (clip)	-
13	Transparent plastic (filter)	-
14	Black plastic (frame, filter)	-
15	Grey foam (cushion)	-
16	Black paper (sleeve)	-
17	Black printed white fabric (label)	-
18	Black/ brown ceramic (bead, filter)	-
19	White plastic (filter)	-
20	Silvery metal (filter)	-
21	White textile (filter)	-
22	Translucent plastic (frame, filter)	-
23	Blue textile (filter)	-
24	Black coating (on plate)	-
25	Silvery metal (plate)	-
26	Dark silvery metal (clip)	-
27	White soft plastic (sleeve)	-
28	Silvery metal (wire)	-
29	Transparent glass (lamp shade)	-
30	White ceramic (case, lamp)	-
31	Silvery plated golden metal (pin, lamp)	-
32	Black plastic (clip)	-
33	Dark silvery metal (spring)	-
34	Silvery metal (clip)	-
35	Translucent plastic (tie)	-
36	Black plastic (filter)	-
37	Black plastic (case, switch)	-
38	Brown plastic (button, switch)	-
39	Silvery plated golden metal (contact plate, switch)	-
40	Silvery metal (button, switch)	-
41	Silvery plated golden metal (pin, switch)	-
42	Coppery metal (contact plate, switch)	-
43	Black soft plastic (cable jacket)	-



**BUREAU
VERITAS**

LAB NO. : (9322)227-1766
DATE : Aug 24, 2022
PAGE : 24 OF 35

44	Grey printed black soft plastic (heating shrink tube)	-
45	Yellow soft plastic (wire jacket)	-
46	Silvery metal (wire)	-
47	Silvery plated golden metal (contact plate, wire connector)	-
48	White soft plastic (wire jacket)	-
49	Red soft plastic (wire jacket)	-
50	Brown soft plastic (wire jacket)	-
51	Blue soft plastic (wire jacket)	-
52	White plastic (case, wire connector)	-
53	Silvery/ blue metal (foil)	-
54	Silvery metal (connector)	-
55	Brown plastic (shade)	-
56	Pink printed soft plastic (wire jacket)	-
57	Black plastic (tie)	-
58	Silvery metal (gasket)	-
59	Black plastic (bar)	-
60	Translucent plastic (box)	-
61	Black plastic (block)	-
62	White plastic (ring)	-
63	Black core (ring)	-
64	Black soft plastic (seal ring)	-
65	Black foam (cushion)	-
66	Black plastic (frame)	-
67	Grey plastic (case, plug)	-
68	Grey plastic (insulation, block)	-
69	Coppery metal (contact plate)	-
70	Brown soft plastic (wire jacket)	-
71	Blue soft plastic (wire jacket)	-
72	Black soft plastic (sleeve, wire jacket)	-
73	Red soft plastic (wire jacket)	-
74	Blue soft plastic (wire jacket)	-
75	Dark blue soft plastic (wire jacket)	-
76	Silvery plated golden metal (female lug)	-
77	Black plastic (fan)	-
78	Black plastic (fan blade)	-
79	White soft plastic (wire jacket)	-
80	Black plastic (holder)	-
81	Black plastic (brush)	-
82	Black soft plastic (wire jacket)	-
83	Red soft plastic (wire jacket)	-
84	Black plastic (case, plug)	-
85	Black plastic (case, pcb box)	-
86	Black plastic (base, pcb box)	-
87	Black soft plastic (seal ring)	-
88	Silvery metal (ring)	-
89	Silvery metal (rotor)	-
90	Silvery metal (plate)	-
91	Black soft plastic (seal ring)	-
92	Black core (ring)	-
93	Black soft plastic (cable jacket)	-
94	Black soft plastic (wire jacket)	-
95	White soft plastic (wire jacket)	-



**BUREAU
VERITAS**

LAB NO. : (9322)227-1766
DATE : Aug 24, 2022
PAGE : 25 OF 35

96	Red soft plastic (wire jacket)	-
97	Yellow soft plastic (wire jacket)	-
98	Blue soft plastic (wire jacket)	-
99	White ceramic (case, motor)	-
100	Black printed silvery plastic (label)	-
101	Brown plastic (bead holder, bearing)	-
102	Silvery metal (ring, bearing)	-
103	Silvery metal (bead, bearing)	-
104	Silvery metal (case, bearing)	-
105	Silvery metal (cover, bearing)	-
106	Silvery metal (gasket)	-
107	Silvery metal (shaft, motor)	-
108	Silvery metal (nut)	-
109	Black magnet (core, motor)	-
110	Silvery metal (coil holder, motor)	-
111	Silvery metal (cover, motor)	-
112	Silvery metal (gasket)	-
113	Black plastic (pin holder)	-
114	Silvery plated golden metal (pin)	-
115	Silvery plated golden metal (contact plate)	-
116	Black soft plastic (cover)	-
117	Grey soft plastic (tyre)	-
118	White plastic (wheel)	-
119	Silvery metal (plate, wheel connector)	-
120	Silvery metal (shaft, wheel connector)	-
121	Silvery metal (bead, wheel connector)	-
122	Silvery metal (bracket)	-
123	Silvery metal (nut, connector)	-
124	Black soft plastic (cable jacket)	-
125	Black soft plastic (case, connector)	-
126	Black plastic (insulation, connector)	-
127	Coppery metal (contact plate, connector)	-
128	Blue soft plastic (wire jacket)	-
129	Brown soft plastic (wire jacket)	-
130	Coppery metal (wire)	-
131	Black soft plastic (case, plug)	-
132	Black plastic (insulation, plug)	-
133	Silvery plated golden metal (pin, plug)	-
134	Silvery metal (bolt)	-
135	Silvery metal (ring)	-
136	Silvery metal (nut)	-
137	Silvery metal (gasket)	-
138	Silvery metal (tube)	-
139	Silvery metal (bolt)	-
140	Green pcb (pcb)	-
141	Silvery solder (connector, pcb)	-
142	Black/ white body (smd resistor, pcb)	-
143	Brown body (smd capacitor, pcb)	-
144	Black body (ic, pcb)	-
145	White plastic (case, inductor, pcb)	-
146	Coppery metal (coil, inductor, pcb)	-
147	Silvery metal (inductor, pcb)	-



**BUREAU
VERITAS**

LAB NO. : (9322)227-1766
DATE : Aug 24, 2022
PAGE : 26 OF 35

148	Silvery plated coppery metal (jumper, pcb)	-
149	Red plastic (pin holder, pcb)	-
150	Black plastic (pin holder, pcb)	-
151	Silvery plated golden metal (pin, connector, plug)	-
152	White plastic (pin holder, pcb)	-
153	Silvery plated golden metal (pin, plug)	-
154	Golden printed green soft plastic (sleeve, capacitor, pcb)	-
155	Black plastic (foil, capacitor, pcb)	-
156	Grey printed black soft plastic (sleeve, capacitor, pcb)	-
157	White plastic (pin holder, pcb)	-
158	Black soft plastic (sleeve, inductor, pcb)	-
159	Coppery metal (coil, inductor, pcb)	-
160	Black core (inductor, pcb)	-
161	Red coppery metal (coil, inductor, pcb)	-
162	Yellow soft plastic (coil sleeve, inductor, pcb)	-
163	Grey coated black core (inductor, pcb)	-
164	Black body (ic, pcb)	-
165	Green pcb (pcb)	-
166	Silvery solder (connector, pcb)	-
167	Green pcb (pcb)	-
168	Silvery solder (connector, pcb)	-
169	Black body (smd inductor, pcb)	-
170	Silvery metal (shade)	-
171	Black printed white/ yellow plastic (label)	-
172	Black body (smd transistor, pcb)	-
173	Black plastic (case, buz, pcb)	-
174	Golden metal (foil, buz, pcb)	-
175	Silvery ceramic (buz, pcb)	-
176	Silvery metal (pin, buz, pcb)	-
177	Blue pcb (pcb)	-
178	Black body (ic, pcb)	-
179	Silvery/ golden body (crystal, pcb)	-
180	Black plastic (block, pcb)	-
181	Transparent body (led, pcb)	-
182	Silvery metal (bead shade, pcb)	-
183	Silvery metal (bead, pcb)	-
184	Green pcb (pcb)	-
185	Silvery solder	-
186	Black body (bd1, pcb)	-
187	Black body (smd diode, pcb)	-
188	Green coated black core (inductor, pcb)	-
189	Silvery metal (plate, inductor, pcb)	-
190	White soft plastic (glue)	-
191	Iridescent metal (screw)	-
192	Yellow soft plastic (adhesive tape, inductor, pcb)	-
193	Black plastic (coil holder, inductor, pcb)	-
194	Silvery metal (plate)	-
195	Green pcb (pcb)	-
196	Silvery solder	-
197	Transparent plastic (foil, digital display, pcb)	-
198	Black printed transparent plastic (foil, digital display, pcb)	-
199	White plastic (case, digital display, pcb)	-



**BUREAU
VERITAS**

LAB NO. : (9322)227-1766
DATE : Aug 24, 2022
PAGE : 27 OF 35

200	White pcb (digital display, pcb)	-
201	Yellow led (pcb)	-
202	Green pcb (pcb)	-
203	White led (pcb)	-
204	Silvery solder (connector, pcb)	-
205	Green pcb (pcb)	-
206	Silvery solder	-
207	Transparent body (ec, pcb)	-
208	Green pcb (pcb)	-
209	Silvery solder (connector, pcb)	-
210	Transparent soft plastic (glue)	-
211	Silvery metal (plate, pcb)	-
212	Black plastic (block, pcb)	-
213	Green pcb (pcb)	-
214	Silvery solder (connector, pcb)	-
215	Transparent plastic (shade)	-
216	Transparent led (pcb)	-
217	Silvery plated golden metal (pin, led, pcb)	-
218	Black printed white paper (label)	-
219	White printed black plastic (case, k, pcb)	-
220	White plastic (coil holder, k, pcb)	-
221	Copper plated silvery metal (contact plate, k, pcb)	-
222	Silvery metal (plate, k, pcb)	-
223	Silvery metal (post, k, pcb)	-
224	Copper metal (coil, k, pcb)	-
225	Silvery metal (pin, k, pcb)	-
226	Yellow soft plastic (adhesive tape, transformer, pcb)	-
227	Black plastic (coil holder, transformer, pcb)	-
228	Black core (coil holder, transformer, pcb)	-
229	Copper metal (coil, transformer, pcb)	-
230	Silvery metal (pin, transformer, pcb)	-
231	Silvery body (fuse, pcb)	-
232	Multi-color printed light green body (resistor, PCB)	-
233	Blue body (vr1, pcb)	-
234	Yellow body (capacitor, PCB)	-
235	Black body (db2, pcb)	-
236	Multicolor printed grey body (resistor, PCB)	-
237	Multi-color printed yellow body (resistor, PCB)	-
238	Silvery body (capacitor, pcb)	-
239	Multi-color printed green body (inductor, PCB)	-
240	Brown printed blue body (capacitor, pcb)	-
241	Green body (capacitor)	-
242	White printed black body (rv1, pcb)	-
243	Black body (transistor, pcb)	-
244	Red body (capacitor, PCB)	-
245	Brown body (fuse, pcb)	-
246	Silvery magnet (connector)	-
247	Golden metal (wire tip)	-



LAB NO. : (9322)227-1766
 DATE : Aug 24, 2022
 PAGE : 28 OF 35

See Analytes and their corresponding Maximum Allowable Limit in Appendix

Parameter	Result									Conclusion
	Lead (Pb)	Cadmium (Cd)	Mercury (Hg)	Chromium VI (Cr VI)	PBBs & PBDEs	DBP	BBP	DEHP	DIBP	
Unit	mg/kg	mg/kg	mg/kg	mg/kg	mg/kg	mg/kg	mg/kg	mg/kg	mg/kg	-
Test Item	-	-	-	-	-	-	-	-	-	-
1	BL	BL	BL	BL	ND*	BL	BL	BL	BL	PASS
2	BL	BL	BL	BL	BL	BL	BL	BL	BL	PASS
3	BL	BL	BL	BL	BL	BL	BL	BL	BL	PASS
4	BL	BL	BL	BL	BL	BL	BL	BL	BL	PASS
5	BL	BL	BL	BL	BL	BL	BL	BL	BL	PASS
6	BL	BL	BL	BL	BL	BL	BL	BL	BL	PASS
7	BL	BL	BL	BL	BL	BL	BL	BL	BL	PASS
8	BL	BL	BL	BL	NA	NA	NA	NA	NA	PASS
9	BL	BL	BL	Negative*	NA	NA	NA	NA	NA	PASS
10	BL	BL	BL	BL	NA	NA	NA	NA	NA	PASS
11	BL	BL	BL	Negative*	NA	NA	NA	NA	NA	PASS
12	BL	BL	BL	Negative*	NA	NA	NA	NA	NA	PASS
13	BL	BL	BL	BL	BL	BL	BL	BL	BL	PASS
14	BL	BL	BL	BL	BL	BL	BL	BL	BL	PASS
15	BL	BL	BL	BL	BL	BL	BL	BL	BL	PASS
16	BL	BL	BL	BL	BL	NA	NA	NA	NA	PASS
17	BL	BL	BL	BL	BL	NA	NA	NA	NA	PASS
18	BL	BL	BL	BL	NA	NA	NA	NA	NA	PASS
19	BL	BL	BL	BL	BL	BL	BL	BL	BL	PASS
20	BL	BL	BL	BL	NA	NA	NA	NA	NA	PASS
21	BL	BL	BL	BL	BL	NA	NA	NA	NA	PASS
22	BL	BL	BL	BL	BL	BL	BL	BL	BL	PASS
23	BL	BL	BL	BL	BL	NA	NA	NA	NA	PASS
24	BL	BL	BL	BL	BL	BL	BL	BL	BL	PASS
25	BL	BL	BL	Negative*	NA	NA	NA	NA	NA	PASS
26	BL	BL	BL	Negative*	NA	NA	NA	NA	NA	PASS
27	BL	BL	BL	BL	BL	BL	BL	BL	BL	PASS
28	BL	BL	BL	BL	NA	NA	NA	NA	NA	PASS
29	BL	BL	BL	BL	NA	NA	NA	NA	NA	PASS
30	BL	BL	BL	BL	NA	NA	NA	NA	NA	PASS
31	26700*#	BL	BL	BL	NA	NA	NA	NA	NA	PASS
32	BL	BL	BL	BL	BL	BL	BL	BL	BL	PASS
33	BL	BL	BL	Negative*	NA	NA	NA	NA	NA	PASS
34	BL	BL	BL	Negative*	NA	NA	NA	NA	NA	PASS
35	BL	BL	BL	BL	BL	BL	BL	BL	BL	PASS
36	BL	BL	BL	BL	BL	BL	BL	BL	BL	PASS
37	BL	BL	BL	BL	ND*	BL	BL	BL	BL	PASS
38	BL	BL	BL	BL	ND*	BL	BL	BL	BL	PASS
39	BL	BL	BL	BL	NA	NA	NA	NA	NA	PASS
40	BL	BL	BL	Negative*	NA	NA	NA	NA	NA	PASS
41	BL	BL	BL	BL	NA	NA	NA	NA	NA	PASS
42	BL	BL	BL	BL	NA	NA	NA	NA	NA	PASS
43	BL	BL	BL	BL	BL	BL	BL	BL	BL	PASS
44	BL	BL	BL	BL	BL	BL	BL	BL	BL	PASS



LAB NO. : (9322)227-1766
 DATE : Aug 24, 2022
 PAGE : 29 OF 35

Parameter	Result									Conclusion
	Lead (Pb)	Cadmium (Cd)	Mercury (Hg)	Chromium VI (Cr VI)	PBBs & PBDEs	DBP	BBP	DEHP	DIBP	
Unit	mg/kg	mg/kg	mg/kg	mg/kg	mg/kg	mg/kg	mg/kg	mg/kg	mg/kg	-
Test Item	-	-	-	-	-	-	-	-	-	-
45	BL	BL	BL	BL	BL	BL	BL	BL	BL	PASS
46	BL	BL	BL	BL	NA	NA	NA	NA	NA	PASS
47	BL	BL	BL	BL	NA	NA	NA	NA	NA	PASS
48	BL	BL	BL	BL	BL	BL	BL	BL	BL	PASS
49	BL	BL	BL	BL	BL	BL	BL	BL	BL	PASS
50	BL	BL	BL	BL	BL	BL	BL	BL	BL	PASS
51	BL	BL	BL	BL	BL	BL	BL	BL	BL	PASS
52	BL	BL	BL	BL	BL	BL	BL	BL	BL	PASS
53	BL	BL	BL	BL	NA	NA	NA	NA	NA	PASS
54	BL	BL	BL	Negative*	NA	NA	NA	NA	NA	PASS
55	BL	BL	BL	BL	BL	BL	BL	BL	BL	PASS
56	BL	BL	BL	BL	BL	BL	BL	BL	BL	PASS
57	BL	BL	BL	BL	BL	BL	BL	BL	BL	PASS
58	BL	BL	BL	Negative*	NA	NA	NA	NA	NA	PASS
59	BL	BL	BL	BL	ND*	BL	BL	BL	BL	PASS
60	BL	BL	BL	BL	BL	BL	BL	BL	BL	PASS
61	BL	BL	BL	BL	BL	BL	BL	BL	BL	PASS
62	BL	BL	BL	BL	BL	BL	BL	BL	BL	PASS
63	BL	BL	BL	ND*	NA	NA	NA	NA	NA	PASS
64	BL	BL	BL	BL	BL	BL	BL	BL	BL	PASS
65	BL	BL	BL	BL	BL	BL	BL	BL	BL	PASS
66	BL	BL	BL	BL	BL	BL	BL	BL	BL	PASS
67	BL	BL	BL	BL	BL	BL	BL	BL	BL	PASS
68	BL	BL	BL	BL	BL	BL	BL	BL	BL	PASS
69	BL	BL	BL	BL	NA	NA	NA	NA	NA	PASS
70	BL	BL	BL	BL	BL	BL	BL	BL	BL	PASS
71	BL	BL	BL	BL	BL	BL	BL	BL	BL	PASS
72	BL	BL	BL	BL	BL	BL	BL	BL	BL	PASS
73	BL	BL	BL	BL	BL	BL	BL	BL	BL	PASS
74	BL	BL	BL	BL	BL	BL	BL	BL	BL	PASS
75	BL	BL	BL	BL	BL	BL	BL	BL	BL	PASS
76	BL	BL	BL	BL	NA	NA	NA	NA	NA	PASS
77	BL	BL	BL	BL	BL	BL	BL	BL	BL	PASS
78	BL	BL	BL	BL	BL	BL	BL	BL	BL	PASS
79	BL	BL	BL	BL	BL	BL	BL	BL	BL	PASS
80	BL	BL	BL	BL	ND*	BL	BL	BL	BL	PASS
81	BL	BL	BL	BL	BL	BL	BL	BL	BL	PASS
82	BL	BL	BL	BL	BL	BL	BL	BL	BL	PASS
83	BL	BL	BL	BL	BL	BL	BL	BL	BL	PASS
84	BL	BL	BL	BL	ND*	BL	BL	BL	BL	PASS
85	BL	BL	BL	BL	BL	BL	BL	BL	BL	PASS
86	BL	BL	BL	BL	BL	BL	BL	BL	BL	PASS
87	BL	BL	BL	BL	BL	BL	BL	BL	BL	PASS
88	BL	BL	BL	Negative*	NA	NA	NA	NA	NA	PASS
89	BL	BL	BL	Negative*	NA	NA	NA	NA	NA	PASS
90	BL	BL	BL	BL	NA	NA	NA	NA	NA	PASS
91	BL	BL	BL	BL	BL	BL	BL	BL	BL	PASS



LAB NO. : (9322)227-1766
 DATE : Aug 24, 2022
 PAGE : 30 OF 35

Parameter	Result									Conclusion
	Lead (Pb)	Cadmium (Cd)	Mercury (Hg)	Chromium VI (Cr VI)	PBBs & PBDEs	DBP	BBP	DEHP	DIBP	
Unit	mg/kg	mg/kg	mg/kg	mg/kg	mg/kg	mg/kg	mg/kg	mg/kg	mg/kg	-
Test Item	-	-	-	-	-	-	-	-	-	-
92	BL	BL	BL	ND*	NA	NA	NA	NA	NA	PASS
93	BL	BL	BL	BL	BL	BL	BL	BL	BL	PASS
94	BL	BL	BL	BL	BL	BL	BL	BL	BL	PASS
95	BL	BL	BL	BL	BL	BL	BL	BL	BL	PASS
96	BL	BL	BL	BL	BL	BL	BL	BL	BL	PASS
97	BL	BL	BL	BL	BL	BL	BL	BL	BL	PASS
98	BL	BL	BL	BL	BL	BL	BL	BL	BL	PASS
99	BL	BL	BL	BL	BL	NA	NA	NA	NA	PASS
100	BL	BL	BL	BL	BL	BL	BL	BL	BL	PASS
101	BL	BL	BL	BL	BL	BL	BL	BL	BL	PASS
102	BL	BL	BL	Negative*	NA	NA	NA	NA	NA	PASS
103	BL	BL	BL	Negative*	NA	NA	NA	NA	NA	PASS
104	BL	BL	BL	Negative*	NA	NA	NA	NA	NA	PASS
105	BL	BL	BL	BL	NA	NA	NA	NA	NA	PASS
106	BL	BL	BL	Negative*	NA	NA	NA	NA	NA	PASS
107	BL	BL	BL	BL	NA	NA	NA	NA	NA	PASS
108	BL	BL	BL	Negative*	NA	NA	NA	NA	NA	PASS
109	BL	BL	BL	BL	NA	NA	NA	NA	NA	PASS
110	BL	BL	BL	Negative*	NA	NA	NA	NA	NA	PASS
111	BL	BL	BL	BL	NA	NA	NA	NA	NA	PASS
112	BL	BL	BL	Negative*	NA	NA	NA	NA	NA	PASS
113	BL	BL	BL	BL	ND*	BL	BL	BL	BL	PASS
114	BL	BL	BL	BL	NA	NA	NA	NA	NA	PASS
115	BL	BL	BL	BL	NA	NA	NA	NA	NA	PASS
116	BL	BL	BL	BL	BL	BL	BL	BL	BL	PASS
117	BL	BL	BL	BL	BL	BL	BL	BL	BL	PASS
118	BL	BL	BL	BL	BL	BL	BL	BL	BL	PASS
119	BL	BL	BL	Negative*	NA	NA	NA	NA	NA	PASS
120	BL	BL	BL	Negative*	NA	NA	NA	NA	NA	PASS
121	BL	BL	BL	Negative*	NA	NA	NA	NA	NA	PASS
122	BL	BL	BL	BL	NA	NA	NA	NA	NA	PASS
123	BL	BL	BL	Negative*	NA	NA	NA	NA	NA	PASS
124	BL	BL	BL	BL	BL	BL	BL	BL	BL	PASS
125	BL	BL	BL	BL	BL	BL	BL	BL	BL	PASS
126	BL	BL	BL	BL	ND*	BL	BL	BL	BL	PASS
127	BL	BL	BL	BL	NA	NA	NA	NA	NA	PASS
128	BL	BL	BL	BL	BL	BL	BL	BL	BL	PASS
129	BL	BL	BL	BL	BL	BL	BL	BL	BL	PASS
130	BL	BL	BL	BL	NA	NA	NA	NA	NA	PASS
131	BL	BL	BL	BL	BL	BL	BL	BL	BL	PASS
132	BL	BL	BL	BL	ND*	BL	BL	BL	BL	PASS
133	BL	BL	BL	BL	NA	NA	NA	NA	NA	PASS
134	BL	BL	BL	Negative*	NA	NA	NA	NA	NA	PASS
135	BL	BL	BL	BL	NA	NA	NA	NA	NA	PASS
136	BL	BL	BL	Negative*	NA	NA	NA	NA	NA	PASS
137	BL	BL	BL	Negative*	NA	NA	NA	NA	NA	PASS
138	BL	BL	BL	Negative*	NA	NA	NA	NA	NA	PASS



**BUREAU
VERITAS**

LAB NO. : (9322)227-1766
DATE : Aug 24, 2022
PAGE : 31 OF 35

Parameter	Result									Conclusion
	Lead (Pb)	Cadmium (Cd)	Mercury (Hg)	Chromium VI (Cr VI)	PBBs & PBDEs	DBP	BBP	DEHP	DIBP	
Unit	mg/kg	mg/kg	mg/kg	mg/kg	mg/kg	mg/kg	mg/kg	mg/kg	mg/kg	-
Test Item	-	-	-	-	-	-	-	-	-	-
139	BL	BL	BL	Negative*	NA	NA	NA	NA	NA	PASS
140	BL	BL	BL	BL	ND*	BL	BL	BL	BL	PASS
141	656*	BL	BL	BL	NA	NA	NA	NA	NA	PASS
142	BL	BL	BL	BL	BL	NA	NA	NA	NA	PASS
143	BL	BL	BL	BL	BL	NA	NA	NA	NA	PASS
144	BL	BL	BL	BL	BL	BL	BL	BL	BL	PASS
145	BL	BL	BL	BL	ND*	BL	BL	BL	BL	PASS
146	BL	BL	BL	Negative*	NA	NA	NA	NA	NA	PASS
147	BL	BL	BL	BL	NA	NA	NA	NA	NA	PASS
148	BL	BL	BL	BL	NA	NA	NA	NA	NA	PASS
149	BL	BL	BL	BL	BL	BL	BL	BL	BL	PASS
150	BL	BL	BL	BL	BL	BL	BL	BL	BL	PASS
151	BL	BL	BL	BL	NA	NA	NA	NA	NA	PASS
152	BL	BL	BL	BL	BL	BL	BL	BL	BL	PASS
153	BL	BL	BL	BL	NA	NA	NA	NA	NA	PASS
154	BL	BL	BL	BL	BL	BL	BL	BL	BL	PASS
155	BL	BL	BL	BL	BL	BL	BL	BL	BL	PASS
156	BL	BL	BL	BL	BL	BL	BL	BL	BL	PASS
157	BL	BL	BL	BL	BL	BL	BL	BL	BL	PASS
158	BL	BL	BL	BL	BL	BL	BL	BL	BL	PASS
159	BL	BL	BL	BL	NA	NA	NA	NA	NA	PASS
160	BL	BL	BL	ND*	NA	NA	NA	NA	NA	PASS
161	BL	BL	BL	BL	NA	NA	NA	NA	NA	PASS
162	BL	BL	BL	BL	BL	BL	BL	BL	BL	PASS
163	BL	BL	BL	ND*	NA	NA	NA	NA	NA	PASS
164	BL	BL	BL	BL	BL	BL	BL	BL	BL	PASS
165	BL	BL	BL	BL	BL	BL	BL	BL	BL	PASS
166	BL	BL	BL	BL	NA	NA	NA	NA	NA	PASS
167	BL	BL	BL	BL	ND*	BL	BL	BL	BL	PASS
168	BL	BL	BL	BL	NA	NA	NA	NA	NA	PASS
169	BL	BL	BL	BL	BL	NA	NA	NA	NA	PASS
170	BL	BL	BL	BL	NA	NA	NA	NA	NA	PASS
171	BL	BL	BL	BL	BL	BL	BL	BL	BL	PASS
172	BL	BL	BL	BL	BL	BL	BL	BL	BL	PASS
173	BL	BL	BL	BL	BL	BL	BL	BL	BL	PASS
174	BL	BL	BL	BL	NA	NA	NA	NA	NA	PASS
175	>1500#	BL	BL	BL	BL	NA	NA	NA	NA	PASS
176	BL	BL	BL	BL	NA	NA	NA	NA	NA	PASS
177	BL	BL	BL	BL	BL	BL	BL	BL	BL	PASS
178	BL	BL	BL	BL	BL	BL	BL	BL	BL	PASS
179	BL	BL	BL	BL	NA	NA	NA	NA	NA	PASS
180	BL	BL	BL	BL	BL	BL	BL	BL	BL	PASS
181	BL	BL	BL	BL	BL	BL	BL	BL	BL	PASS
182	23300**	BL	BL	BL	NA	NA	NA	NA	NA	PASS
183	BL	BL	BL	BL	NA	NA	NA	NA	NA	PASS
184	BL	BL	BL	BL	ND*	BL	BL	BL	BL	PASS
185	BL	BL	BL	BL	NA	NA	NA	NA	NA	PASS



**BUREAU
VERITAS**

LAB NO. : (9322)227-1766
DATE : Aug 24, 2022
PAGE : 32 OF 35

Parameter	Result									Conclusion
	Lead (Pb)	Cadmium (Cd)	Mercury (Hg)	Chromium VI (Cr VI)	PBBs & PBDEs	DBP	BBP	DEHP	DIBP	
Unit	mg/kg	mg/kg	mg/kg	mg/kg	mg/kg	mg/kg	mg/kg	mg/kg	mg/kg	-
Test Item	-	-	-	-	-	-	-	-	-	-
186	BL	BL	BL	BL	ND*	BL	BL	BL	BL	PASS
187	BL	BL	BL	BL	BL	BL	BL	BL	BL	PASS
188	BL	BL	BL	BL	NA	NA	NA	NA	NA	PASS
189	BL	BL	BL	Negative*	NA	NA	NA	NA	NA	PASS
190	BL	BL	BL	BL	BL	BL	BL	BL	BL	PASS
191	BL	BL	BL	Negative*	NA	NA	NA	NA	NA	PASS
192	BL	BL	BL	BL	BL	BL	BL	BL	BL	PASS
193	BL	BL	BL	BL	BL	BL	BL	BL	BL	PASS
194	BL	BL	BL	BL	NA	NA	NA	NA	NA	PASS
195	BL	BL	BL	BL	ND*	BL	BL	BL	BL	PASS
196	BL	BL	BL	BL	NA	NA	NA	NA	NA	PASS
197	BL	BL	BL	BL	BL	BL	BL	BL	BL	PASS
198	BL	BL	BL	BL	BL	BL	BL	BL	BL	PASS
199	BL	BL	BL	BL	BL	BL	BL	BL	BL	PASS
200	BL	BL	BL	BL	BL	BL	BL	BL	BL	PASS
201	BL	BL	BL	BL	BL	BL	BL	BL	BL	PASS
202	BL	BL	BL	BL	ND*	BL	BL	BL	BL	PASS
203	BL	BL	BL	BL	BL	BL	BL	BL	BL	PASS
204	864*	BL	BL	BL	NA	NA	NA	NA	NA	PASS
205	BL	BL	BL	BL	ND*	BL	BL	BL	BL	PASS
206	BL	BL	BL	BL	NA	NA	NA	NA	NA	PASS
207	BL	BL	BL	BL	BL	NA	NA	NA	NA	PASS
208	BL	BL	BL	BL	ND*	BL	BL	BL	BL	PASS
209	BL	BL	BL	BL	NA	NA	NA	NA	NA	PASS
210	BL	BL	BL	BL	BL	BL	BL	BL	BL	PASS
211	BL	BL	BL	Negative*	NA	NA	NA	NA	NA	PASS
212	BL	BL	BL	BL	ND*	BL	BL	BL	BL	PASS
213	BL	BL	BL	BL	BL	BL	BL	BL	BL	PASS
214	BL	BL	BL	BL	NA	NA	NA	NA	NA	PASS
215	BL	BL	BL	BL	BL	BL	BL	BL	BL	PASS
216	BL	BL	BL	BL	ND*	BL	BL	BL	BL	PASS
217	BL	BL	BL	BL	NA	NA	NA	NA	NA	PASS
218	BL	BL	BL	BL	BL	NA	NA	NA	NA	PASS
219	BL	BL	BL	BL	ND*	BL	BL	BL	BL	PASS
220	BL	BL	BL	BL	ND*	BL	BL	BL	BL	PASS
221	BL	BL	BL	BL	NA	NA	NA	NA	NA	PASS
222	BL	BL	BL	BL	NA	NA	NA	NA	NA	PASS
223	BL	BL	BL	BL	NA	NA	NA	NA	NA	PASS
224	BL	BL	BL	BL	NA	NA	NA	NA	NA	PASS
225	BL	BL	BL	BL	NA	NA	NA	NA	NA	PASS
226	BL	BL	BL	BL	BL	BL	BL	BL	BL	PASS
227	BL	BL	BL	BL	BL	BL	BL	BL	BL	PASS
228	BL	BL	BL	BL	NA	NA	NA	NA	NA	PASS
229	BL	BL	BL	BL	NA	NA	NA	NA	NA	PASS
230	BL	BL	BL	BL	NA	NA	NA	NA	NA	PASS
231	BL	BL	BL	BL	BL	NA	NA	NA	NA	PASS
232	BL	BL	BL	Negative*	BL	NA	NA	NA	NA	PASS



LAB NO. : (9322)227-1766
 DATE : Aug 24, 2022
 PAGE : 33 OF 35

Parameter	Result									Conclusion
	Lead (Pb)	Cadmium (Cd)	Mercury (Hg)	Chromium VI (Cr VI)	PBBs & PBDEs	DBP	BBP	DEHP	DIBP	
Unit	mg/kg	mg/kg	mg/kg	mg/kg	mg/kg	mg/kg	mg/kg	mg/kg	mg/kg	-
Test Item	-	-	-	-	-	-	-	-	-	-
233	BL	BL	BL	BL	BL	NA	NA	NA	NA	PASS
234	BL	BL	BL	BL	ND*	BL	BL	BL	BL	PASS
235	>1500 [#]	BL	BL	BL	ND*	BL	BL	BL	BL	PASS
236	BL	BL	BL	Negative*	BL	NA	NA	NA	NA	PASS
237	BL	BL	BL	BL	BL	NA	NA	NA	NA	PASS
238	BL	BL	BL	BL	BL	NA	NA	NA	NA	PASS
239	BL	BL	BL	ND*	BL	NA	NA	NA	NA	PASS
240	BL	BL	BL	BL	BL	NA	NA	NA	NA	PASS
241	BL	BL	BL	ND*	NA	NA	NA	NA	NA	PASS
242	BL	BL	BL	BL	BL	NA	NA	NA	NA	PASS
243	>1500 [#]	BL	BL	BL	BL	BL	BL	BL	BL	PASS
244	BL	BL	BL	BL	BL	BL	BL	BL	BL	PASS
245	10400 ^{**}	BL	BL	BL	BL	BL	BL	BL	BL	PASS
246	BL	BL	BL	Negative*	NA	NA	NA	NA	NA	PASS
247	BL	BL	BL	BL	NA	NA	NA	NA	NA	PASS

Note / Key :

ND = Not detected
 BL = Below Limit
 NR = Not requested
 Detection Limit: See Appendix.

“>” = Greater than
 NA = Not applicable
 mg/kg = milligram(s) per kilogram = ppm = part(s) per million

“<” = Less than
 EX= Exempted

Remark :

- The testing approach is listed in table of Appendix.
- * denotes as reported result(s) was (were) performed by wet chemistry method. Others were screened by XRF. For XRF screening, the result(s) of Cr VI was (were) reported as total chromium and the result(s) of PBBs and PBDEs was (were) reported as total bromine. Also, the XRF result(s) may be different to the actual content based on various factors including, but not limit to, sample size, thickness, area, non-uniformity composition, surface flatness.
- Only selected example(s) is (are) indicated on the photograph(s) in Comment.
- According to European Parliament and Council Directive 2011/65/EU, Article 5 “Adaptation of the Annexes to scientific and technical progress”, exemption(s) should be granted to the materials and components of Test Item(s) in the lists in Annexes III and IV of this directive.
- #According to Annex III of Directive (EU)2015/863 Amendment of European Parliament and Council Directive 2011/65/EU, exemptions were granted a few materials and Clause 6(c) is reiterated here “Copper alloy containing up to 4 % lead by weight.”. Test Item(s) < 31, 182, 245 > was (were) claimed as is by client (received as is). Therefore, this (these) Test Item(s) containing the found lead level should be exempted.
- #According to Annex III of Directive (EU)2015/863 Amendment of European Parliament and Council Directive 2011/65/EU, exemptions were granted a few materials and Clause 7(c)-I is reiterated here “Electrical and electronic components containing lead in a glass or ceramic other than dielectric ceramic in capacitors, e.g. piezoelectronic devices, or in a glass or ceramic matrix compound.”. Test Item(s) < 175 > was (were) claimed as is by client (received as is). Therefore, this (these) Test Item(s) containing the found lead level should be exempted.
- #According to Annex III of Directive (EU)2015/863 Amendment of European Parliament and Council Directive 2011/65/EU, exemptions were granted a few materials and Clause 7(a) is reiterated here “Lead in high melting temperature type solders (i.e. lead-based alloys containing 85 % by weight or more lead).”. Test Item(s) < 235, 243 > was (were) claimed as is by client (received as is). Therefore, this (these) Test Item(s) containing the found lead level should be exempted.
- The above result(s) of 1-69, 73-135, 140-184, 186-195, 197-205, 207-240, 242-247 is/are transferred from (9322)188-0744 dated on Aug 24, 2022.
- The above result(s) of 136-139, 185, 196, 206, 241 is/are transferred from (9322)214-1125 dated on Aug 24, 2022.



LAB NO. : (9322)227-1766
 DATE : Aug 24, 2022
 PAGE : 34 OF 35

APPENDIX

List of Analytes and their Corresponding Test Methods, Detection Limit and Maximum Allowable Limit [Compliance Test for European Parliament and Council Directive 2011/65/EU with its Amendments (EU) 2015/863] :

No.	Name of Analyte(s)	Detection Limit (mg/kg)				Maximum Allowable Limit (mg/kg)
		X-ray fluorescence (XRF) ^[a]			Wet Chemistry	
		Plastic	Metallic / glass / ceramic	Others		
1	Lead (Pb)	100	200	200	10 ^[b]	1000
2	Cadmium (Cd)	50	50	50	10 ^[b]	100
3	Mercury (Hg)	100	200	200	10 ^[c]	1000
4	Chromium (Cr)	100	200	200	NA	NA
5	Chromium VI (Cr VI)	NA	NA	NA	3 ^[g, h] / 10 ^[d] / See ^[e, i]	1000 / Negative ^[j]
6	Bromine (Br)	200	NA	200	NA	NA
7	Polybromobiphenyls (PBBs) - Bromobiphenyl (MonoBB) - Dibromobiphenyl (DiBB) - Tribromobiphenyl (TriBB) - Tetrabromobiphenyl (TetraBB) - Pentabromobiphenyl (PentaBB) - Hexabromobiphenyl (HexaBB) - Heptabromobiphenyl (HeptaBB) - Octabromobiphenyl (OctaBB) - Nonabromobiphenyl (NonaBB) - Decabromobiphenyl (DecaBB)	NA	NA	NA	Each 50 ^[f]	Sum 1000
8	Polybromodiphenyl ethers (PBDEs) - Bromodiphenyl ether (MonoBDE) - Dibromodiphenyl ether (DiBDE) - Tribromodiphenyl ether (TriBDE) - Tetrabromodiphenyl ether (TetraBDE) - Pentabromodiphenyl ether (PentaBDE) - Hexabromodiphenyl ether (HexaBDE) - Heptabromodiphenyl ether (HeptaBDE) - Octabromodiphenyl ether (OctaBDE) - Nonabromodiphenyl ether (NonaBDE) - Decabromodiphenyl ether (DecaBDE)	NA	NA	NA	Each 50 ^[f]	Sum 1000
9	Dibutyl phthalate (DBP) Butyl benzyl phthalate (BBP) Di-2-ethylhexyl phthalate (DEHP) Diisobutyl phthalate (DIBP)	NA	NA	NA	Each 500 ^[j]	Each 1000

NA = Not applicable IEC = International Electrotechnical Commission
^[a] Test method with reference to International Standard IEC 62321-3-1: 2013.
^[b] Test method with reference to International Standard IEC 62321-5: 2013.
^[c] Test method with reference to International Standard IEC 62321-4: 2013+AMD1: 2017 CSV.
^[d] Polymers and Electronics - Test method with reference to International Standard IEC 62321-7-2: 2017.
^[e] Metal - Test method with reference to International Standard IEC 62321-7-1: 2015.
^[f] Test method with reference to International Standard IEC 62321-6: 2015.
^[g] Leather - Test method International Standard ISO 17075: 2017.
^[h] Other Than Metal, Leather, Polymers and Electronics - Test method with reference to International Standard ISO 17075: 2017.
^[i] Result(s) of Cr VI for metallic material(s) was (were) expressed in term of positive and negative. Negative means the absence of Cr VI on the tested areas and the result(s) was (were) regarded as in compliance with European Parliament and Council Directive 2011/65/EU, Article 4(1). While, positive means the presence of Cr VI on tested areas and the result(s) was (were) regarded as in conflict with European Parliament and Council Directive 2011/65/EU, Article 4(1).
^[j] Test method with reference International Standard IEC 62321-8: 2017.

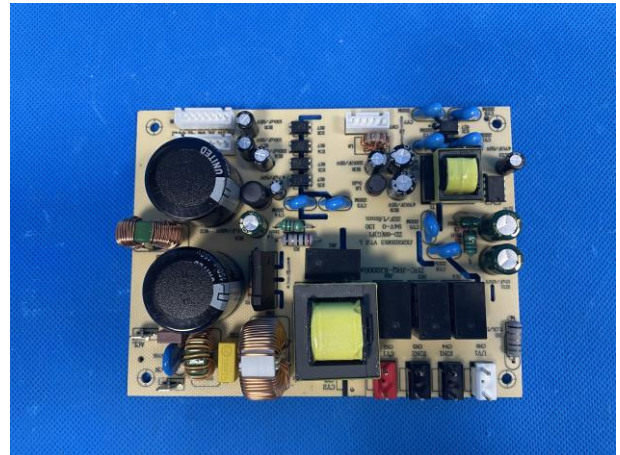
Testing Approach [Compliance Test for European Parliament and Council Directive 2011/65/EU] :

The testing approach was with reference to the following document(s).

1	International Standards IEC 62321-1: 2013 and IEC 62321-2: 2021
2	"RoHS Enforcement Guidance Document Version 1" by EU RoHS Enforcement Authorities Informal Network. (May 2006)
3	"RoHS Regulations - Government Guidance Notes" by United Kingdom Department for Business Innovation & Skills. (February 2011)
4	"Final Report to RoHS substances (Hg, Pb, Cr(VI), Cd, PBB and PBDE) in electrical and electronic equipment in Belgium" by Belgium Federal Public Service Health, Food Chain Safety and Environment. (November 2005)



ASP-C2, ASP-C2s, ASP-C2x, ALR-L2, AT-XL2



Alternative PCB Board

Remark: Photo(s) was/ were provided by client

END