



TEST REPORT

LAB NO. : (9321)355-0919-R1
DATE : Dec 29, 2021
PAGE : 1 OF 28

The report is amendment of and supersedes the previous report (9321)355-0919 dated Dec 24, 2021

APPLICANT : **FOSHAN SHUNDE XIANGTAI SCAVENGING MATERIAL INDUSTRIAL CO., LTD**
BLOCK 1, NO.9 INDUSTRIAL ROAD, FENGJIAN INDUSTRIAL ZONE, XINGTAN TOWN, SHUNDE DISTRICT, FOSHAN CITY, GUANGDONG, P.R.CHINA

CONTACT PERSON : YANG NIANCUN

DATE OF SUBMISSION : Dec 21, 2021

TEST PERIOD : Dec 21, 2021 to Dec 24, 2021

SAMPLE DESCRIPTION : Air purifier

Color: /

Style no. / Model no.: XT-KJ070A

P.O. No.: /

Country of Origin: /

Country of Destination: /

MANUFACTURER : Foshan Shunde Xiangtai Scavenging Material Industrial CO., LTD
Block 1, No.9 Industrial Road, Fengjian Industrial Zone, Xingtan Town, Shunde District, Foshan City, Guangdong, P.R.China

SUMMARY OF TEST RESULTS

TEST REQUESTED	CONCLUSION	REMARK
Compliance Test - European Parliament and Council Directive 2011/65/EU on the Restriction of the Use of Certain Hazardous Substances in Electrical and Electronic Equipment (RoHS) with its Amendments (EU) 2015/863	PASS	

RW

Bureau Veritas Consumer Products Services (Guangzhou) Co., Ltd
No. 183, Shinan Road, Meilin Plaza, Dongchong, Nansha, Guangzhou, Guangdong Province, China 511453
Tel: (86) 20 2290 2088 Fax: (86) 20 3490 9303
Email: BVCPSP_yinfo@bureauveritas.com
Website: cps.bureauveritas.com

This report is governed by, and incorporates by reference, CPS Conditions of Service as posted at the date of issuance of this report at <http://www.bureauveritas.com/home/about-us/our-business/cps/about-us/terms-conditions> and is intended for your exclusive use. Any copying or replication of this report to or for any other person or entity, or use of our name or trademark, is permitted only with our prior written permission. This report sets forth our findings solely with respect to the test samples identified herein. The results set forth in this report are not indicative or representative of the quality or characteristics of the lot from which a test sample was taken or any similar or identical product unless specifically and expressly noted. Our report includes all of the tests requested by you and the results thereof based upon the information that you provided to us. Measurement uncertainty is only provided upon request for accredited tests. You have 60 days from date of issuance of this report to notify us of any material error or omission caused by our negligence or if you require measurement uncertainty; provided, however, that such notice shall be in writing and shall specifically address the issue you wish to raise. A failure to raise such issue within the prescribed time shall constitute your unqualified acceptance of the completeness of this report, the tests conducted and the correctness of the report contents.

The content of this PDF file is in accordance with the original issued reports for reference only.
This Test Report cannot be reproduced, except in full, without prior written permission of the company.



LAB NO. : (9321)355-0919-R1
DATE : Dec 29, 2021
PAGE : 2 OF 28

BUREAU VERITAS CONSUMER PRODUCTS SERVICES (GUANGZHOU) CO., LTD

KENNY WANG
OPERATION MANAGER



REMARK

If there are questions or concerns on this report, please contact the following persons:

- a) GENERAL TEL: (86)755 83437287
FAX: (86)755 83439100
b) BUSINESS SZ TEL: (86)755 21534695
FAX: (86)755 83439100
BUSINESS GZ TEL: (86) 20 87148525
FAX: (86) 20 87148528
- EMAIL: eechemical.sc@bureauveritas.com
WEBSITE cps.bureauveritas.cn

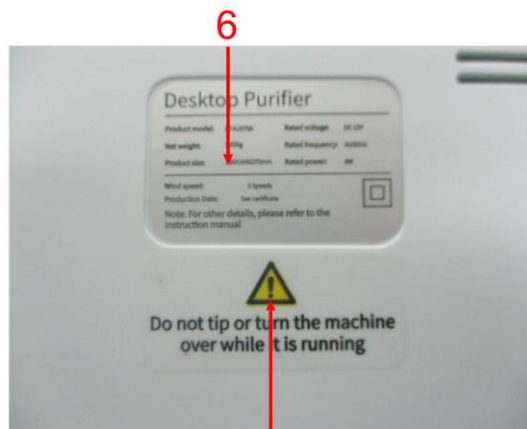
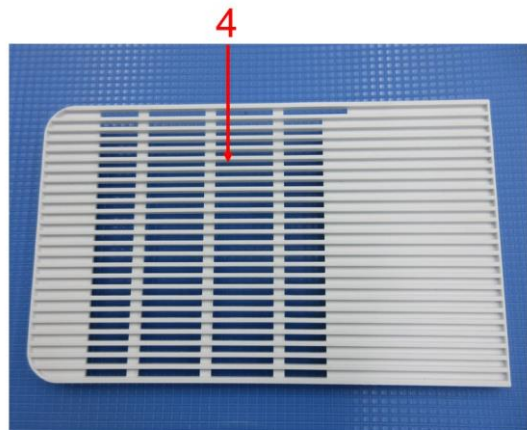
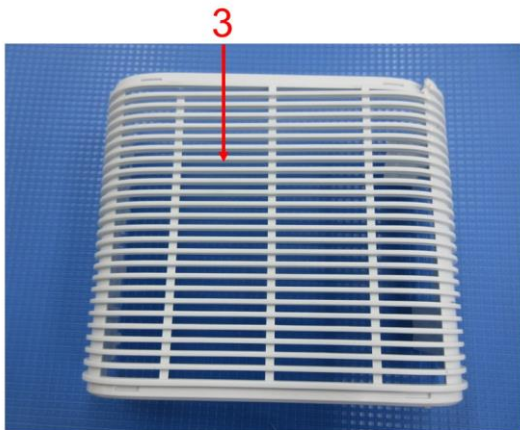
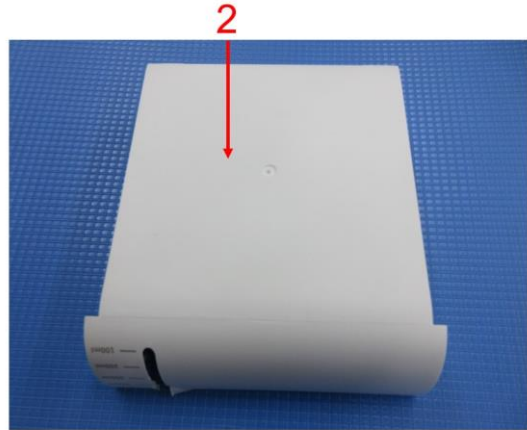


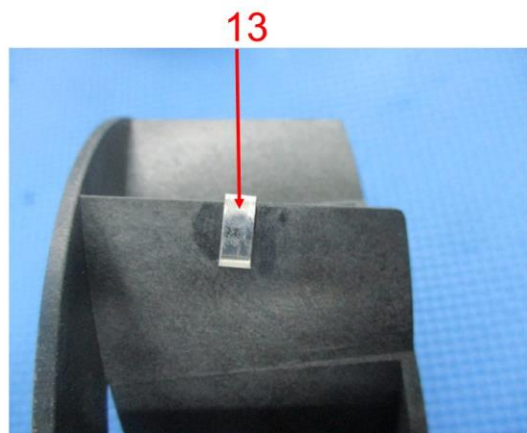
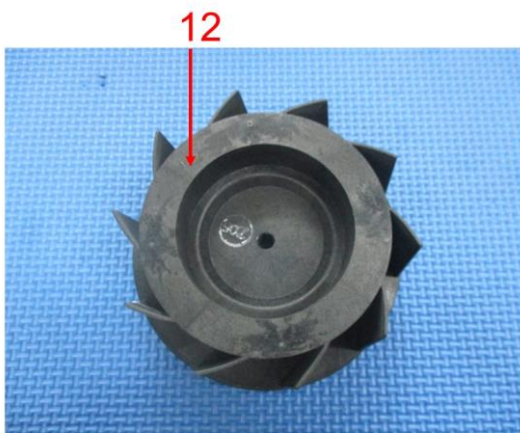
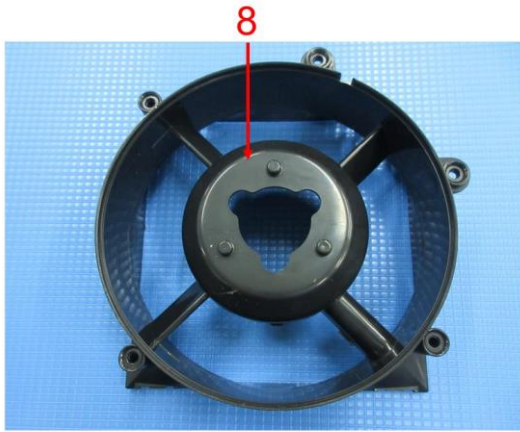
LAB NO. : (9321)355-0919-R1
DATE : Dec 29, 2021
PAGE : 3 OF 28

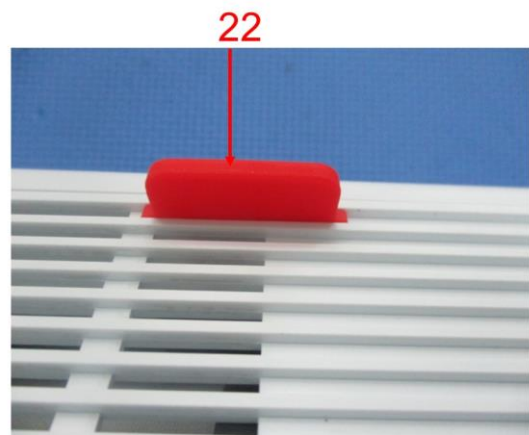
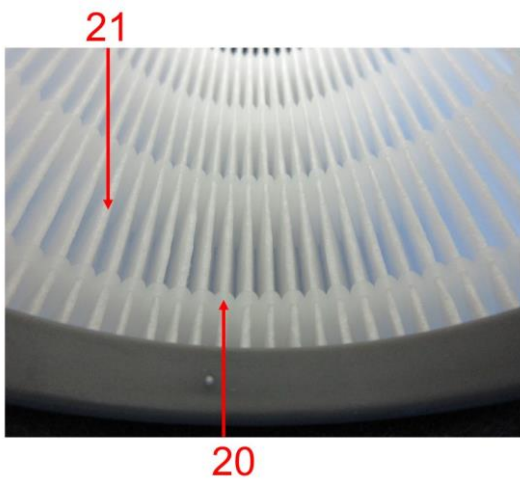
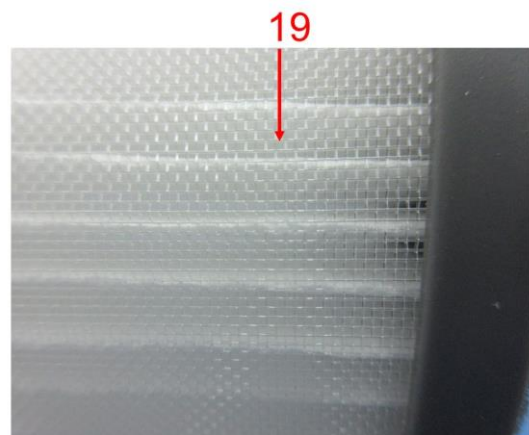
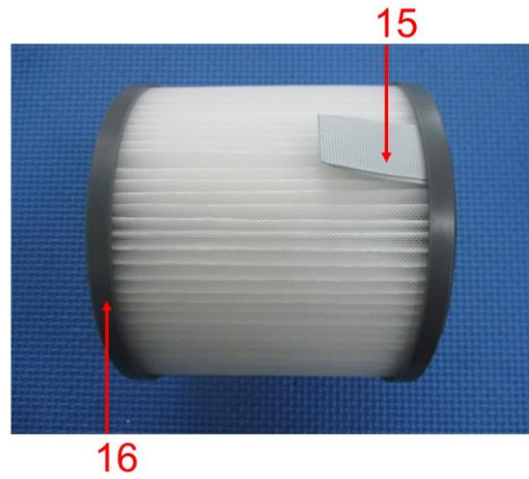
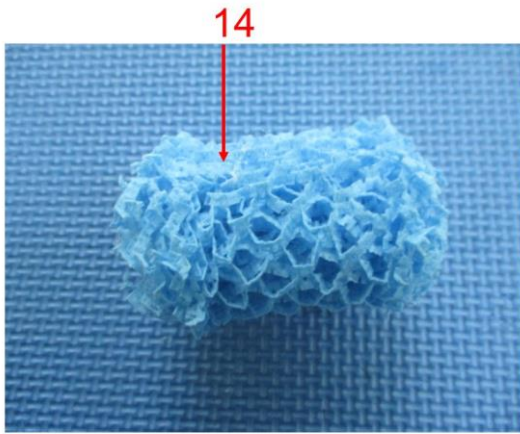
Photo of the Submitted Sample

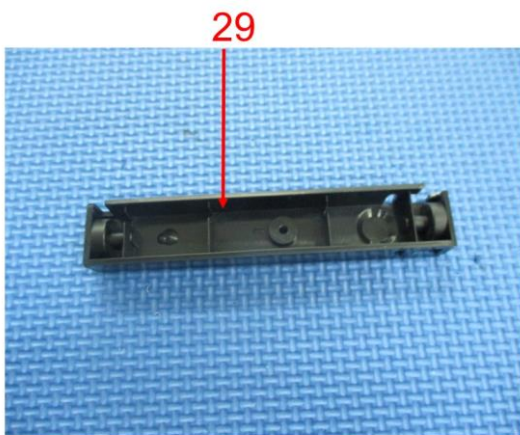
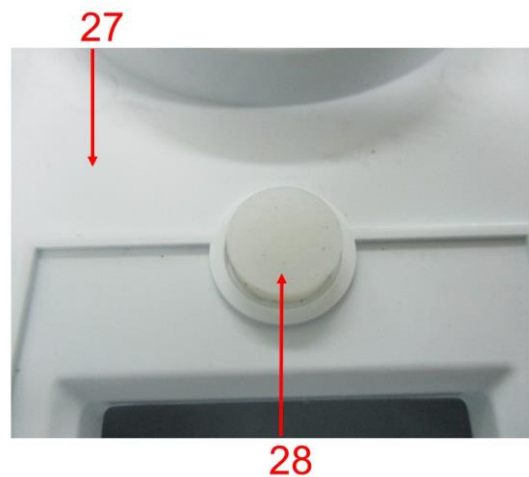
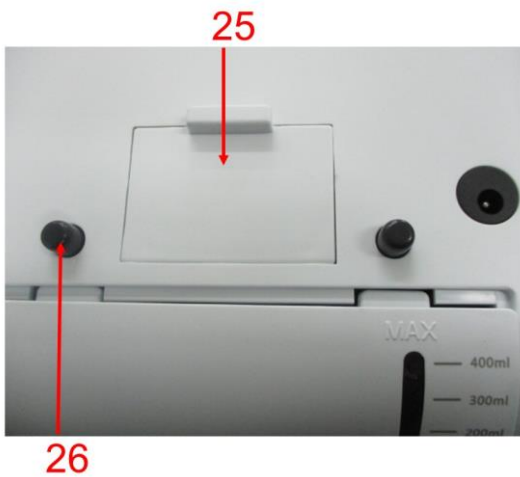
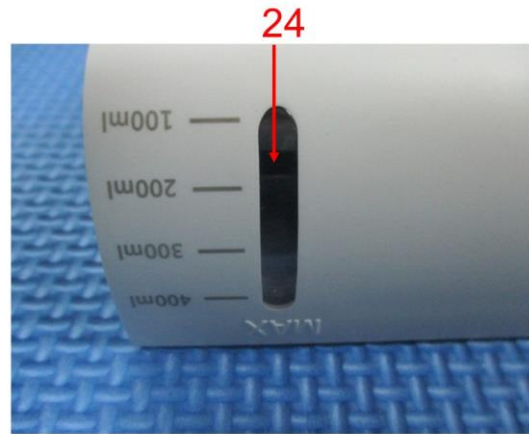
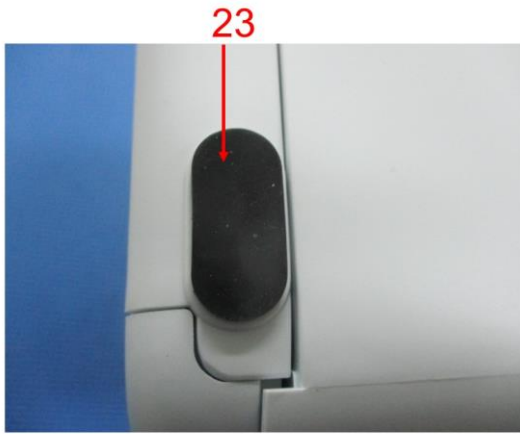


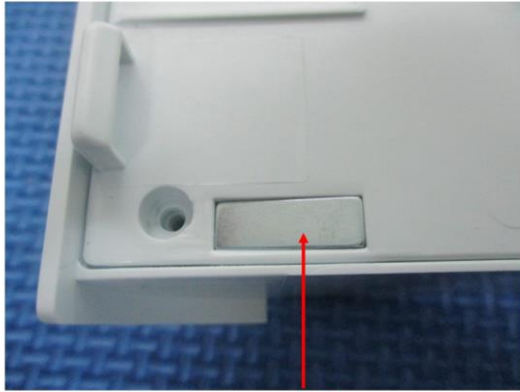
of test item(s)



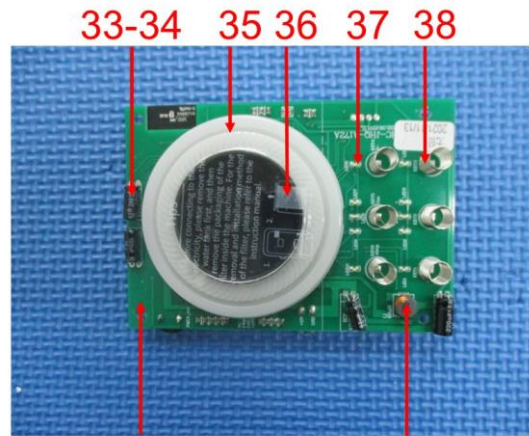








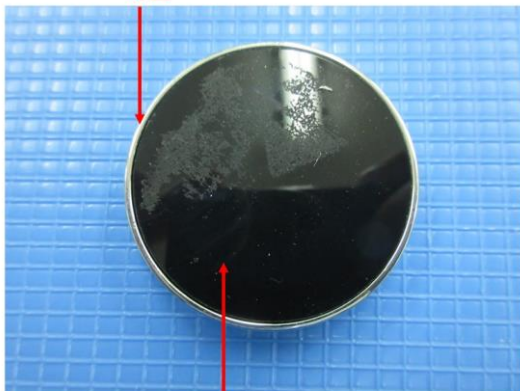
32



33-34 35 36 37 38

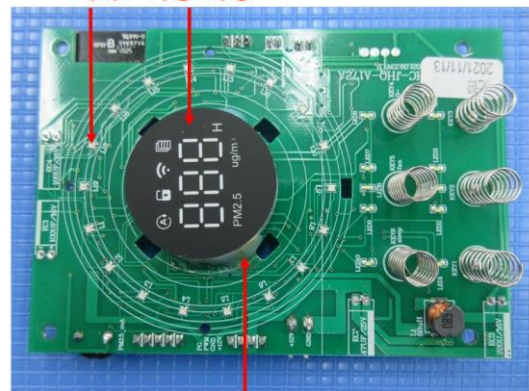
39

40-41



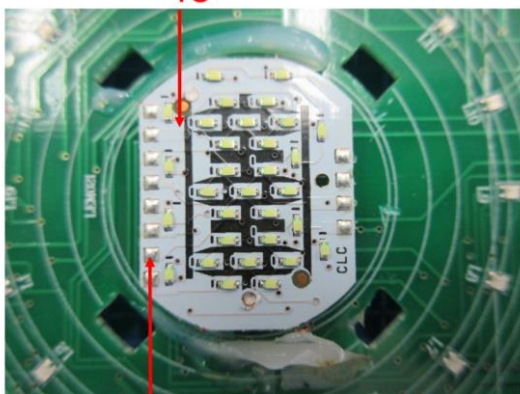
42

43



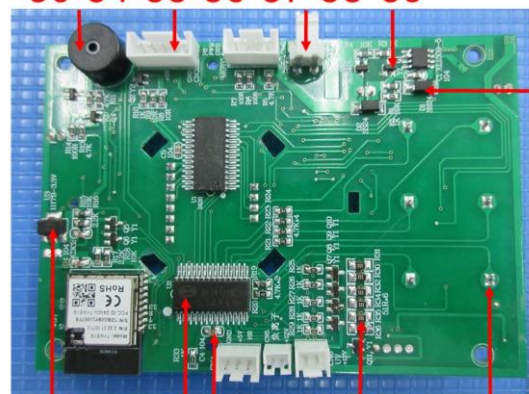
44 45-46

47



48

49



50-54 55-56 57-58 59

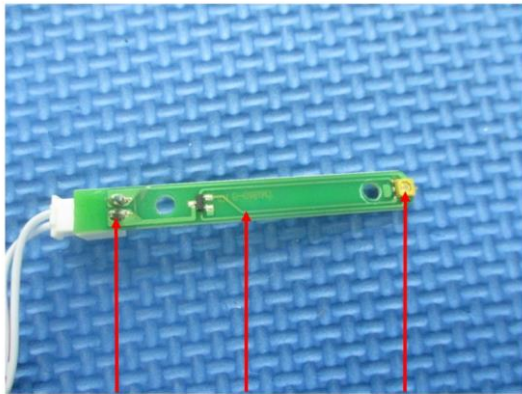
60

61 62

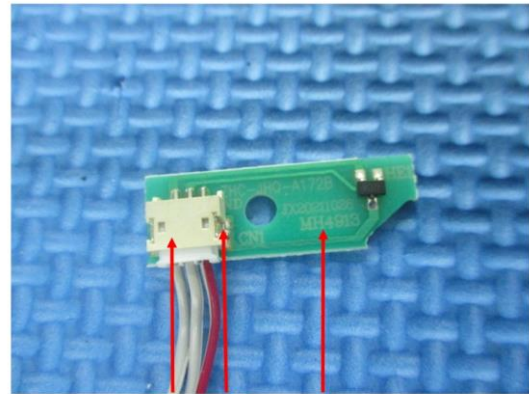
63

64

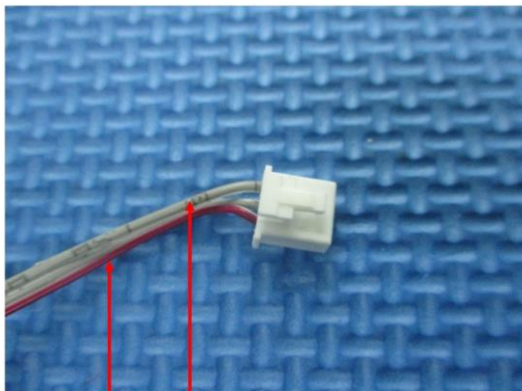
65



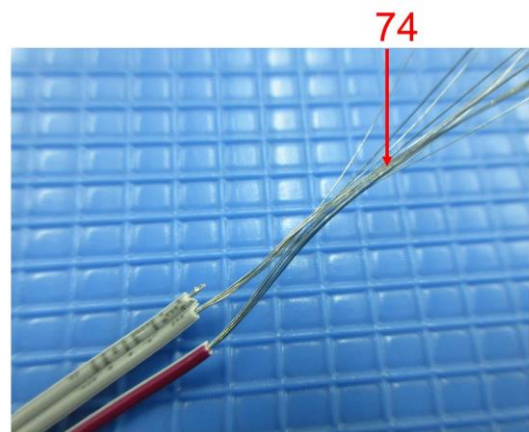
66 67 68



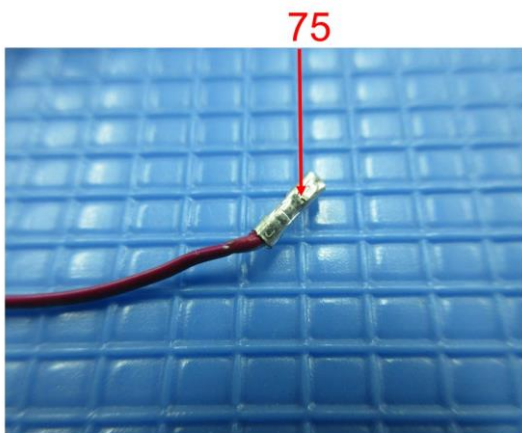
69 70 71



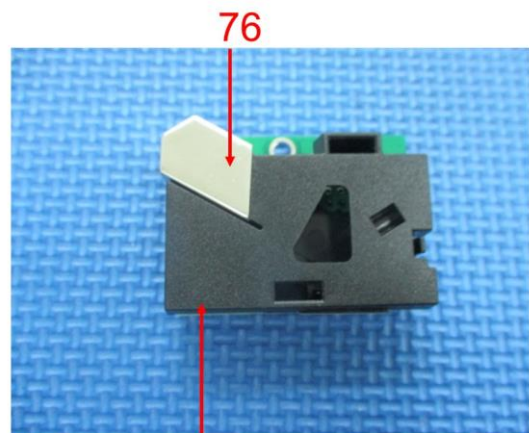
72 73



74

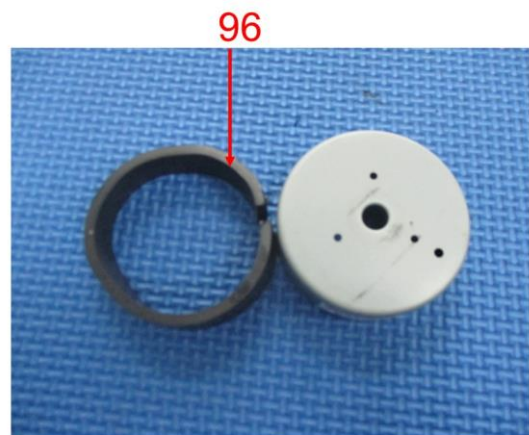
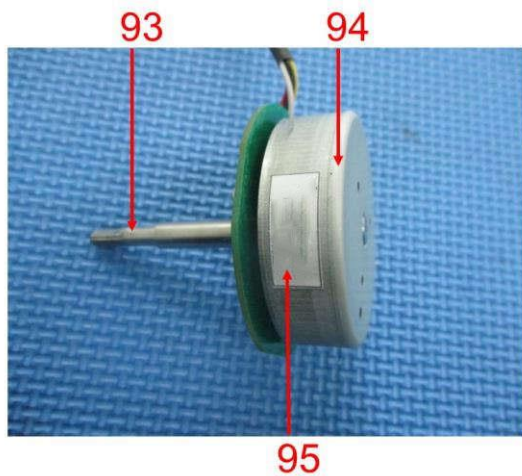
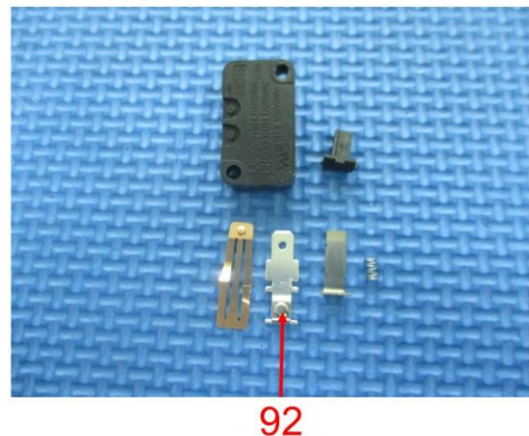
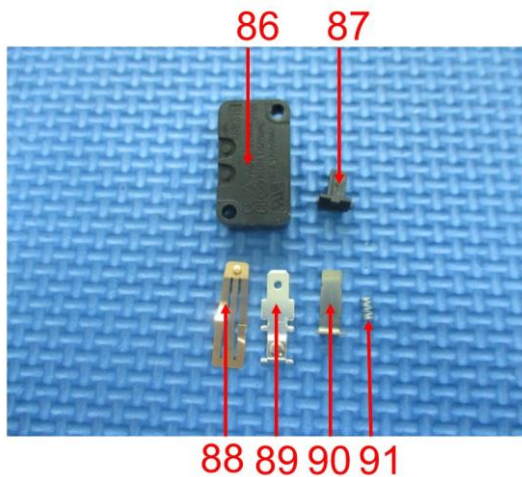
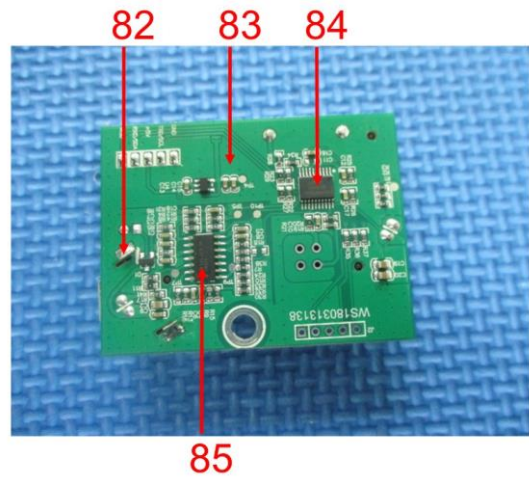
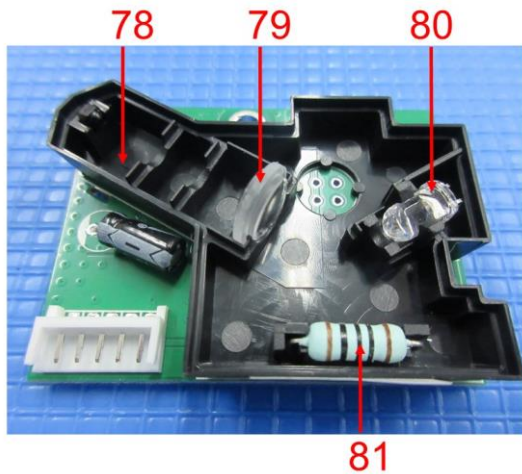


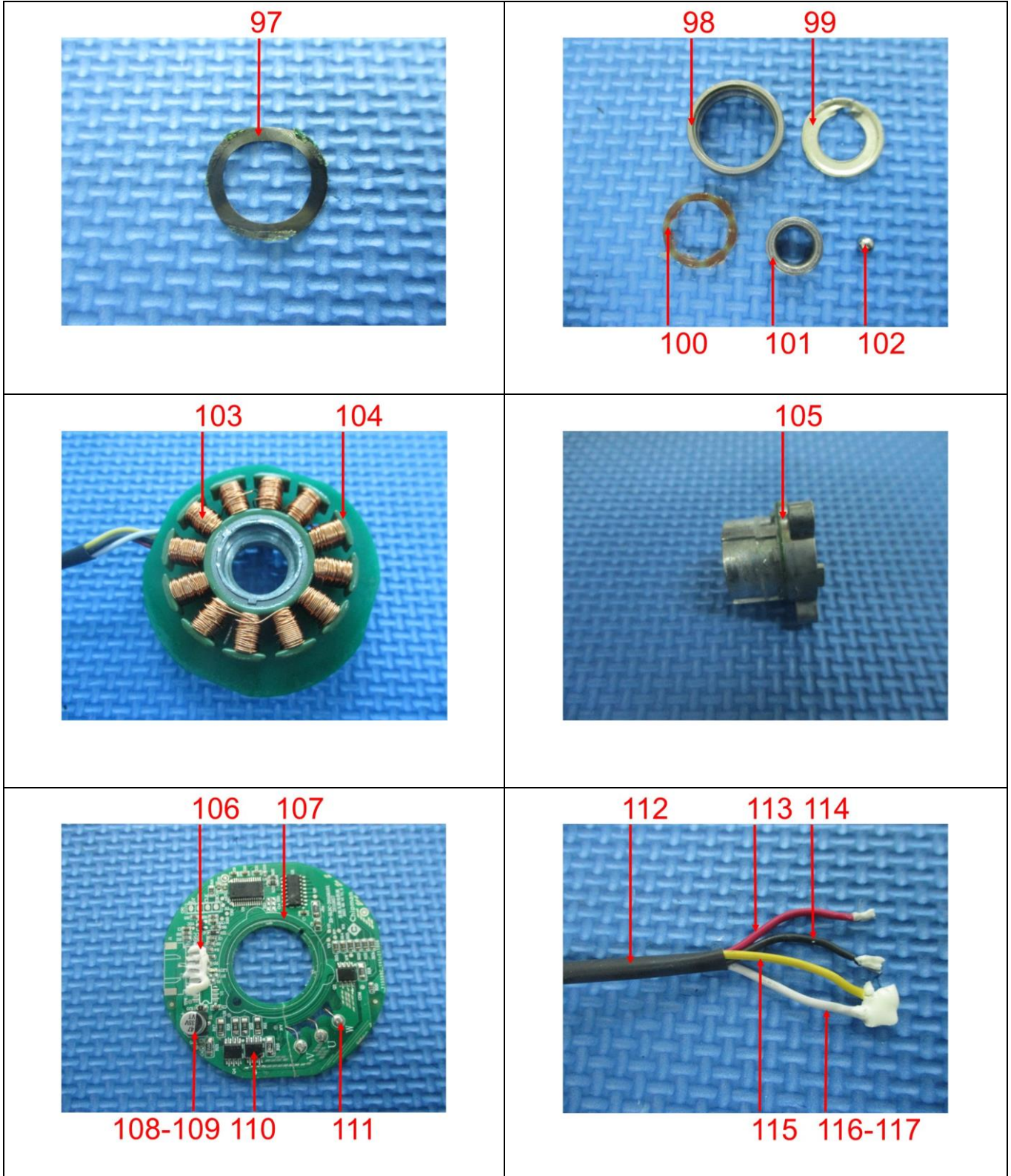
75

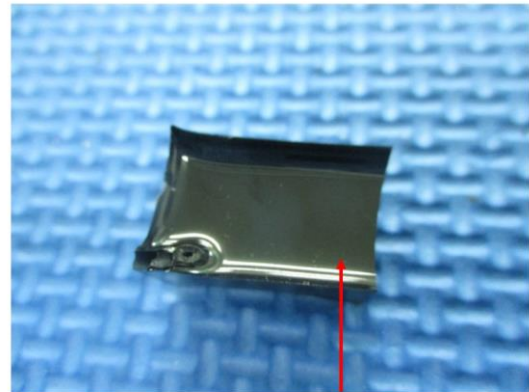
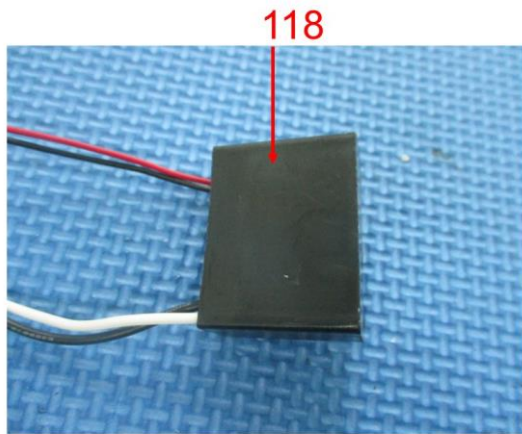


76

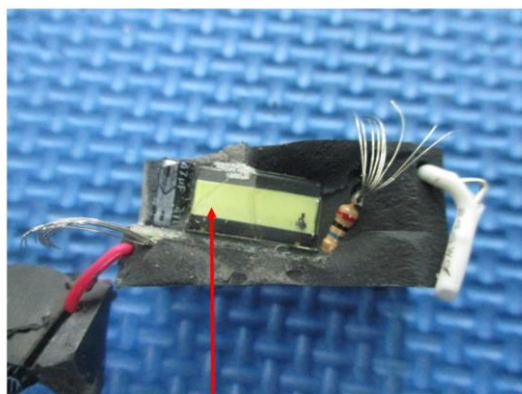
77



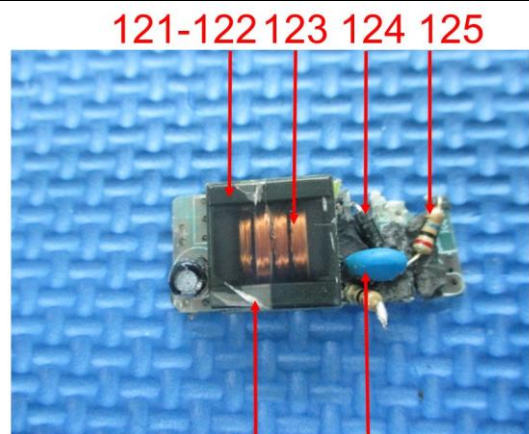




119

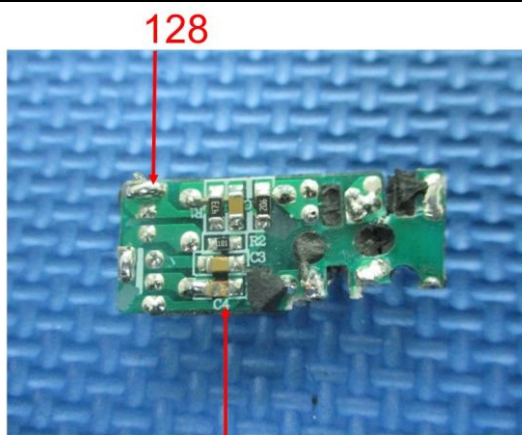


120

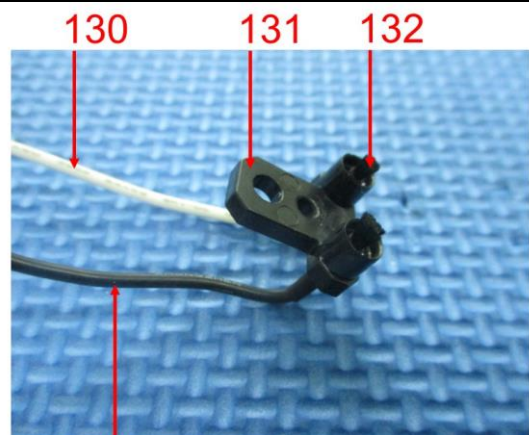


126

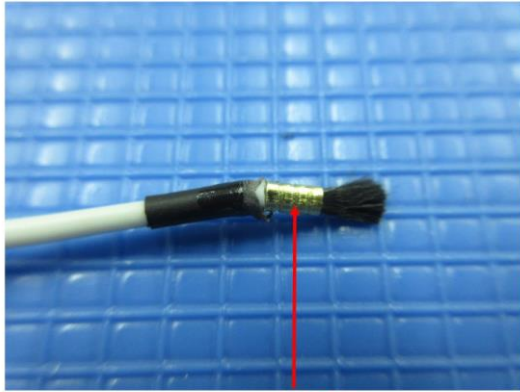
127



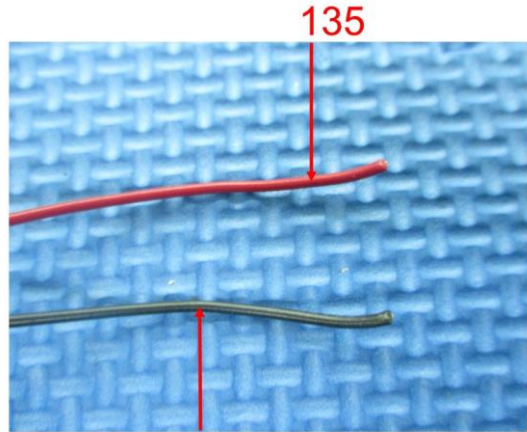
129



133

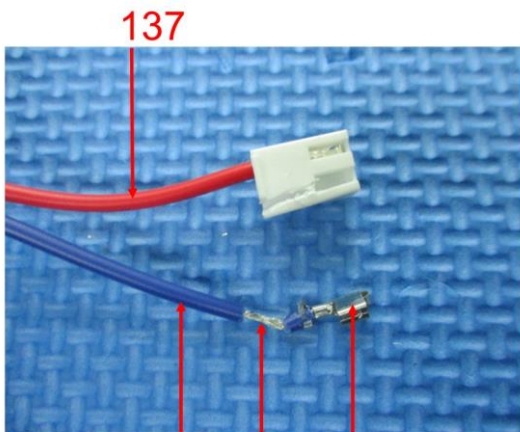


134



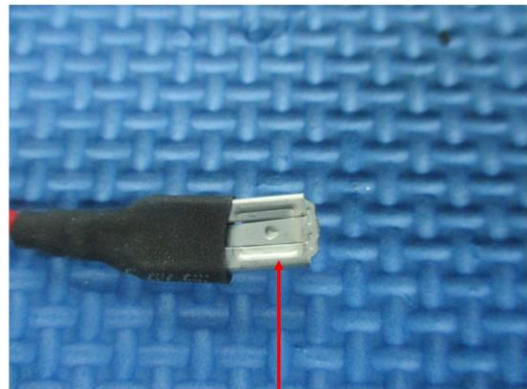
135

136

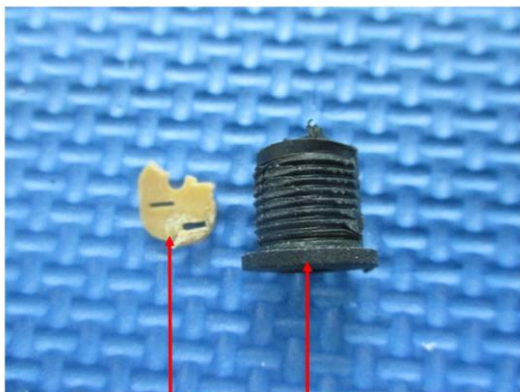


137

138 139 140



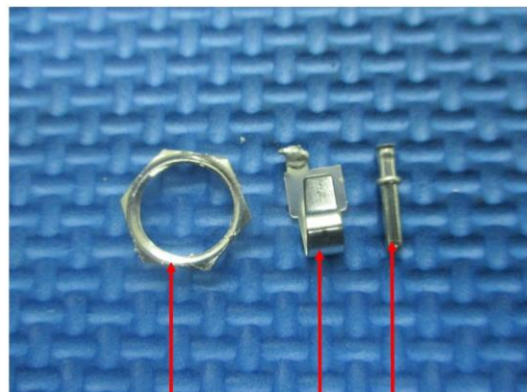
141



142



143



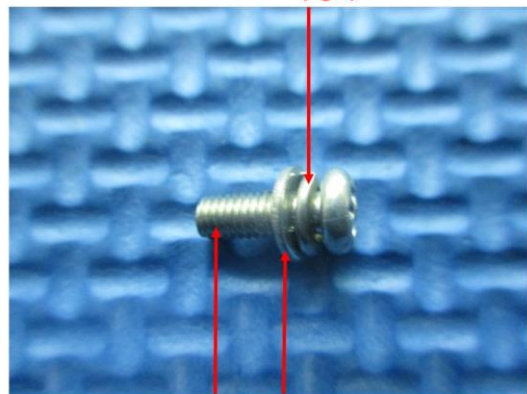
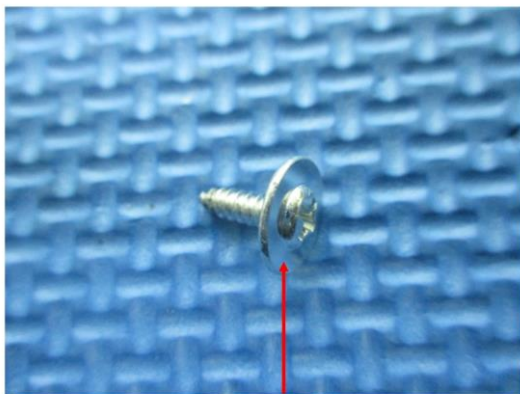
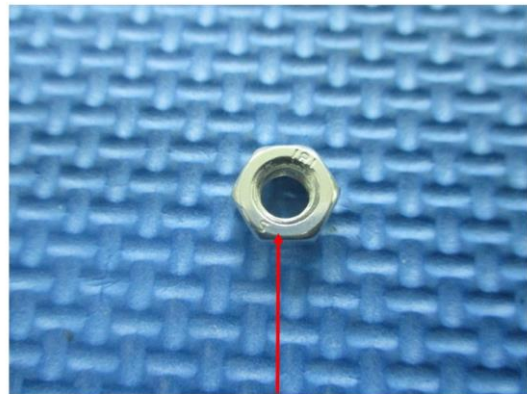
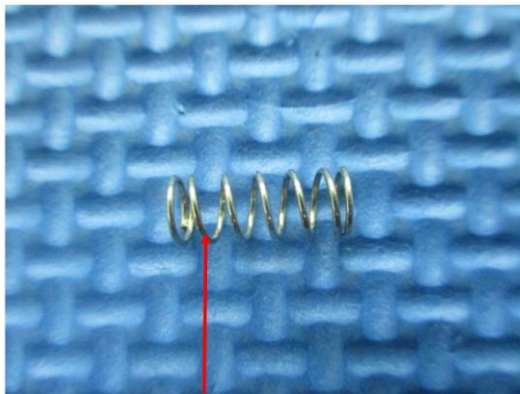
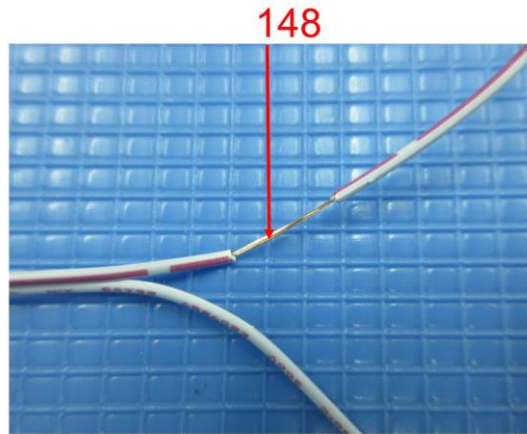
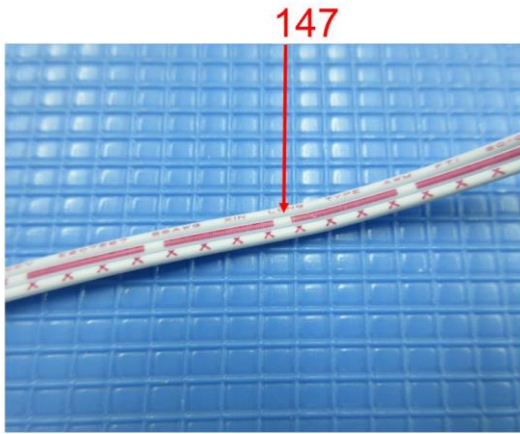
144

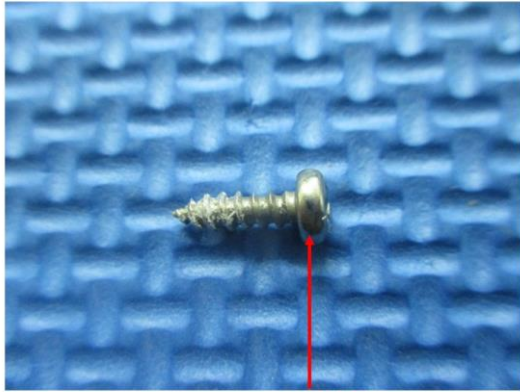


145

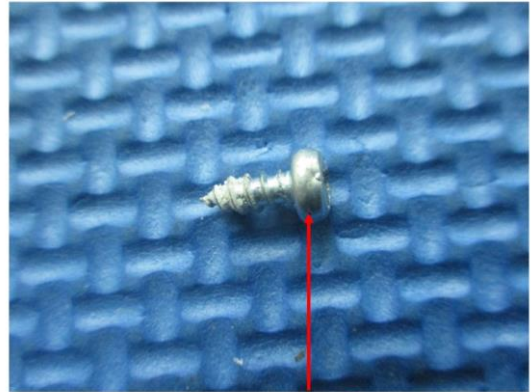


146





155



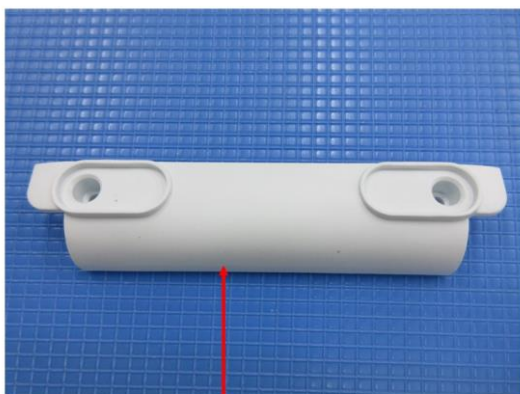
156



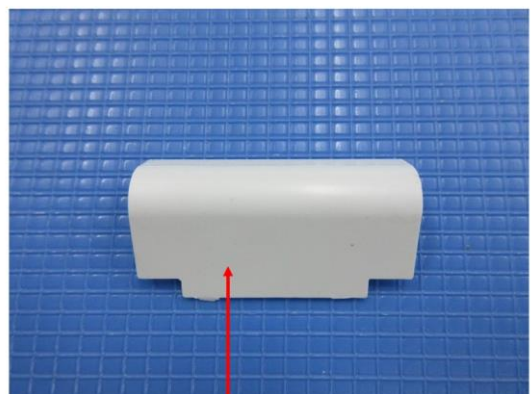
157



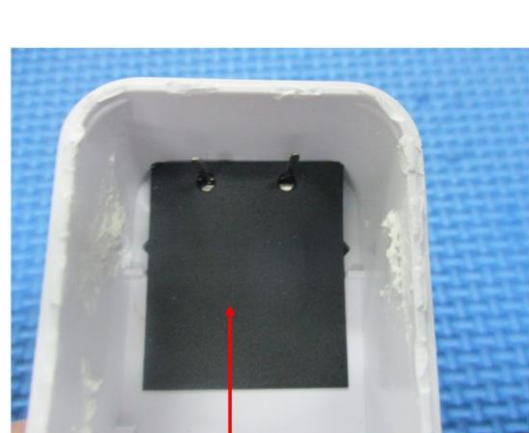
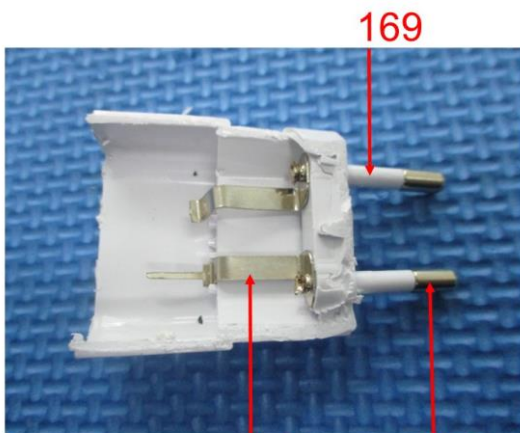
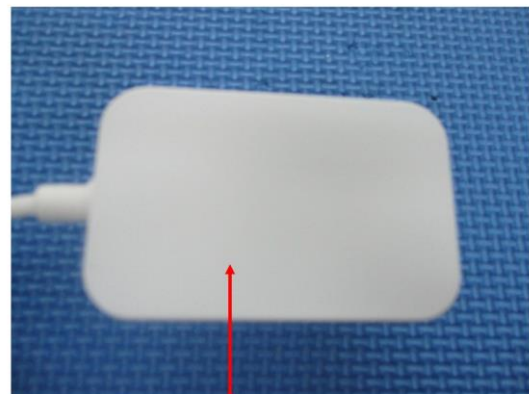
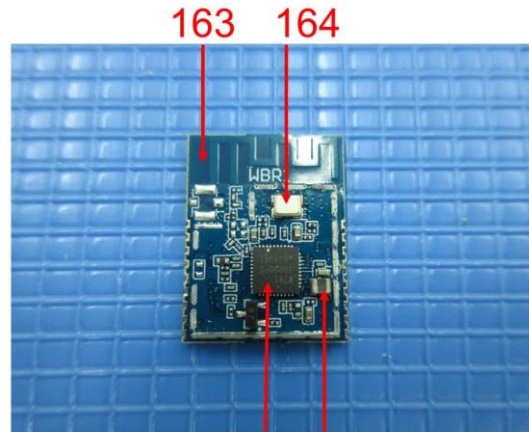
158

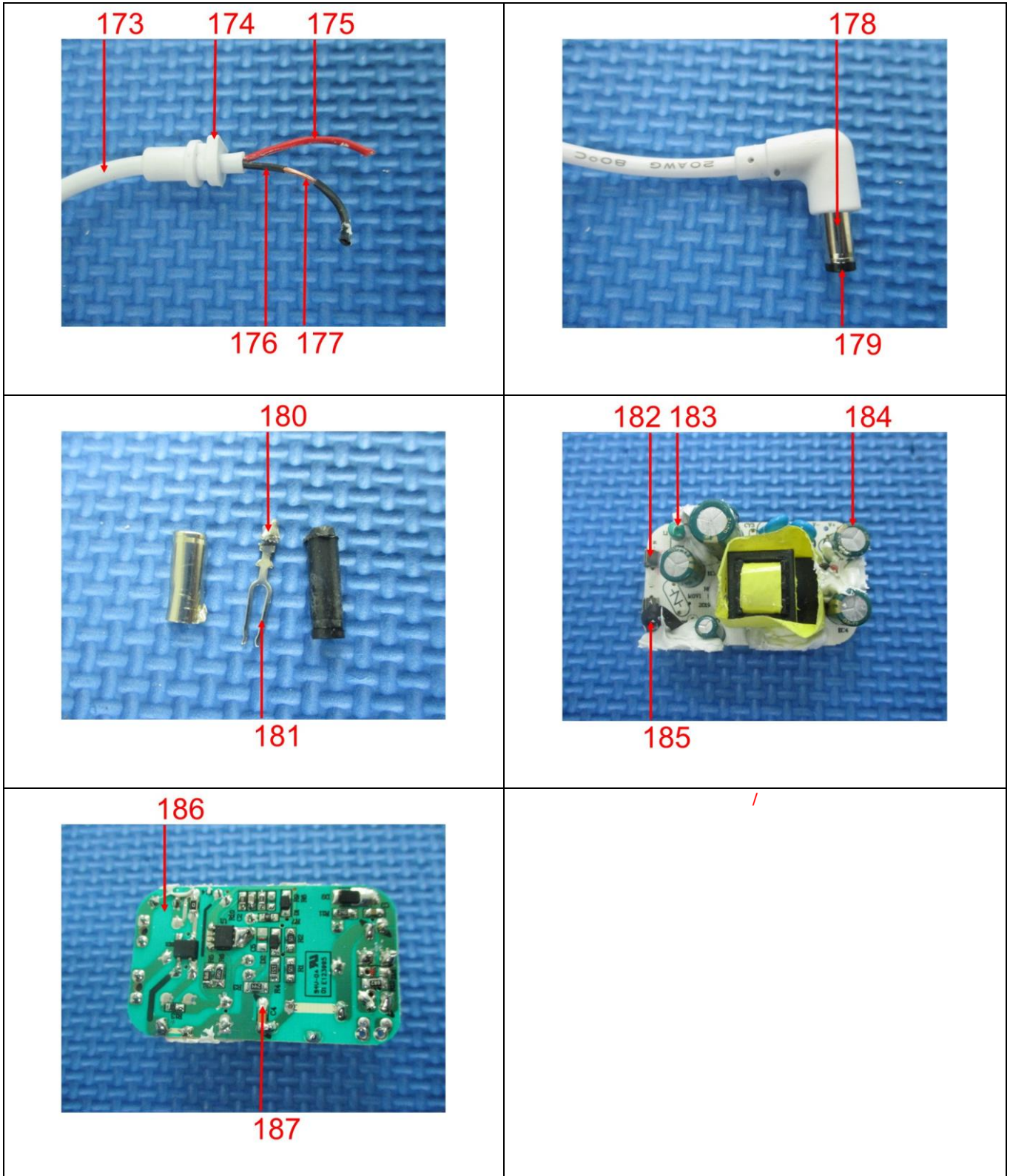


159



160







LAB NO. : (9321)355-0919-R1
DATE : Dec 29, 2021
PAGE : 18 OF 28

TEST RESULT

Compliance Test - European Parliament and Council Directive 2011/65/EU on the Restriction of the Use of Certain Hazardous Substances in Electrical and Electronic Equipment (RoHS) with its Amendments (EU) 2015/863

Test Method : See Appendix.

Test Item(s)	Item / Component Description(s) + Location(s)	Style(s)
1	Grey printed white plastic (body)	-
2	White plastic (body)	-
3	White plastic (mesh)	-
4	White plastic (mesh)	-
5	White plastic (body, back)	-
6	Black printed silvery plastic with adhesive (sticker)	-
7	Black/ yellow printed transparent plastic with adhesive (sticker)	-
8	Black plastic	-
9	Black plastic	-
10	Black plastic	-
11	Black plastic	-
12	Black plastic	-
13	Silvery metal (clip)	-
14	Blue non-woven fabric	-
15	Grey textile (tape)	-
16	Deep grey plastic (ring)	-
17	Black foam	-
18	Black fabric with adhesive	-
19	Transparent plastic (mesh)	-
20	White soft plastic	-
21	White non-woven fabric	-
22	Red soft plastic	-
23	Black soft plastic with adhesive (foot)	-
24	Transparent plastic (water gauge)	-
25	White plastic (cover)	-
26	Black plastic	-
27	White plastic	-
28	Translucent soft plastic with adhesive (foot)	-
29	Black plastic	-
30	Black plastic (ring)	-
31	Black soft plastic (ring)	-
32	Silvery metal (magnet)	-
33	White printed black plastic (sleeve, capacitor, PCB)	-
34	Silvery body (capacitor, PCB)	-
35	White plastic	-
36	White printed transparent plastic with adhesive (sticker)	-
37	Yellow body (smd LED, PCB)	-
38	Silvery metal (spring, PCB)	-
39	Green PCB	-
40	Black core (coil holder, inductor, PCB)	-
41	Coppery metal (coil, inductor, PCB)	-
42	Silvery/ coppery plated grey plastic (ring)	-
43	Black plastic	-



LAB NO. : (9321)355-0919-R1
DATE : Dec 29, 2021
PAGE : 19 OF 28

44	White body (smd LED, PCB)	-
45	Black printed white plastic (plate)	-
46	White plastic (case)	-
47	Translucent soft plastic (glue)	-
48	Light blue PCB	-
49	Silvery solder (PCB)	-
50	Black plastic (cover, BUZZ, PCB)	-
51	Golden metal (plate, BUZZ, PCB)	-
52	White ceramic (on plate, BUZZ, PCB)	-
53	Black plastic (base, BUZZ, PCB)	-
54	Silvery plated copper metal (pin, BUZZ, PCB)	-
55	White plastic (connector)	-
56	Silvery plated golden metal (pin, connector)	-
57	White plastic (connector)	-
58	Silvery plated golden metal (pin, connector)	-
59	Black body (transistor, PCB)	-
60	Black body (IC, PCB)	-
61	Black body (IC, PCB)	-
62	Brown body (smd capacitor, PCB)	-
63	Black printed white body (smd resistor, PCB)	-
64	Silvery solder (PCB)	-
65	Black body (diode, PCB)	-
66	Silvery solder (PCB)	-
67	Green PCB	-
68	Golden body (PCB)	-
69	Beige plastic (connector)	-
70	Silvery metal (plate, connector)	-
71	Green PCB	-
72	Fuchsia printed grey soft plastic (wire jacket)	-
73	Black printed grey soft plastic (wire jacket)	-
74	Silvery plated copper metal (wire)	-
75	Silvery plated copper metal (wire terminal)	-
76	Silvery metal (plate)	-
77	Black plastic (cover)	-
78	Black plastic (base)	-
79	Transparent plastic (len)	-
80	Transparent body (LED)	-
81	Multicolor printed light blue body (resistor)	-
82	Silvery solder (PCB)	-
83	Green PCB	-
84	Black body (IC, PCB)	-
85	Black body (IC, PCB)	-
86	Black plastic (case)	-
87	Black plastic (slider switch)	-
88	Copper metal (plate)	-
89	Silvery plated golden metal (plate)	-
90	Silvery metal (plate)	-
91	Silvery metal (screw)	-
92	Silvery/ copper metal (contact point)	-
93	Silvery metal (shaft)	-
94	Silvery metal (cover)	-
95	Black printed white paper with laminate and adhesive (sticker)	-



LAB NO. : (9321)355-0919-R1
DATE : Dec 29, 2021
PAGE : 20 OF 28

96	Black soft plastic (magnet)	-
97	Black printed silvery metal (ring)	-
98	Silvery metal (outer ring, bearing)	-
99	Silvery metal (plate, bearing)	-
100	Brown plastic (bearing)	-
101	Silvery metal (inner ring, bearing)	-
102	Silvery metal (bead, bearing)	-
103	Coppery metal (coil)	-
104	Green coated silvery metal (plate)	-
105	Silvery metal	-
106	White soft plastic (glue)	-
107	Green PCB	-
108	Black plastic (base)	-
109	Black printed silvery body (capacitor, PCB)	-
110	Black body (IC, PCB)	-
111	Silvery solder (PCB)	-
112	Black soft plastic (heat shrinkable tube)	-
113	Fuchsia soft plastic (wire jacket)	-
114	Black soft plastic (wire jacket)	-
115	Yellow soft plastic (wire jacket)	-
116	White soft plastic (wire jacket)	-
117	Silvery plated coppery metal (wire)	-
118	Black plastic (case, capacitor)	-
119	Black plastic (glue, capacitor)	-
120	Yellow plastic with adhesive (tape, inductor)	-
121	Black core (inductor)	-
122	Black plastic (coil holder, inductor)	-
123	Coppery metal (coil, inductor)	-
124	Grey printed black body (diode)	-
125	Multicolor printed brown body (inductor)	-
126	Transparent plastic (glue)	-
127	Blue body (capacitor)	-
128	Silvery solder (PCB)	-
129	Green PCB	-
130	White soft plastic (wire jacket)	-
131	Black plastic	-
132	Black fiber	-
133	Black soft plastic (wire jacket)	-
134	Golden metal (connector)	-
135	Fuchsia soft plastic (wire jacket)	-
136	Black soft plastic (wire jacket)	-
137	Red soft plastic (wire jacket)	-
138	Blue soft plastic (wire jacket)	-
139	Silvery plated coppery metal (wire)	-
140	Silvery plated coppery metal (terminal)	-
141	Silvery plated golden metal (terminal)	-
142	Brown plastic (plate)	-
143	Black plastic	-
144	Silvery metal (nut)	-
145	Silvery metal (plate)	-
146	Silvery plated golden metal (pin)	-
147	Fuchsia printed white soft plastic (wire jacket)	-



**BUREAU
VERITAS**

LAB NO. : (9321)355-0919-R1
DATE : Dec 29, 2021
PAGE : 21 OF 28

148	Coppery metal (wire)	-
149	Silvery metal (spring)	-
150	Silvery metal (nut)	-
151	Silvery metal (screw)	-
152	Silvery metal (screw)	-
153	Silvery metal (ring)	-
154	Silvery metal (ring)	-
155	Silvery metal (screw)	-
156	Silvery metal (screw)	-
157	Silvery metal (screw)	-
158	Black plastic	-
159	White plastic	-
160	White plastic	-
161	Silvery metal (cover)	-
162	Black printed white plastic with adhesive	-
163	Blue PCB	-
164	Silvery body (crystal, PCB)	-
165	Black body (IC, PCB)	-
166	Black body (smd capacitor, PCB)	-
167	Grey printed white plastic (case, adaptor)	-
168	White plastic (case, adaptor)	-
169	White plastic (insulator, adaptor)	-
170	Silvery metal (plate, adaptor)	-
171	Silvery plated golden metal (pin, adaptor)	-
172	Black plastic (plate, adaptor)	-
173	White soft plastic (cable jacket, adaptor)	-
174	White soft plastic (connector, adaptor)	-
175	Red soft plastic (wire jacket, adaptor)	-
176	Black soft plastic (wire jacket, adaptor)	-
177	Coppery metal (wire, adaptor)	-
178	Silvery plated golden metal (plug)	-
179	Black plastic (insulator, plug)	-
180	Silvery solder	-
181	Silvery plated golden metal (pin)	-
182	Silvery metal (plate)	-
183	Multicolor printed green body (inductor)	-
184	Golden printed green plastic (sleeve, capacitor)	-
185	Multicolor printed grey body (fuse)	-
186	Green PCB (adaptor)	-
187	Silvery solder (PCB)	-

See Analytes and their corresponding Maximum Allowable Limit in Appendix

-	Result									
Parameter	Lead (Pb)	Cadmium (Cd)	Mercury (Hg)	Chromium VI (Cr VI)	PBBs & PBDEs	DBP	BBP	DEHP	DIBP	Conclusion
Unit	mg/kg	mg/kg	mg/kg	mg/kg	mg/kg	mg/kg	mg/kg	mg/kg	mg/kg	-
Test Item	-	-	-	-	-	-	-	-	-	-
1	BL	BL	BL	BL	BL	BL	BL	BL	BL	PASS
2	BL	BL	BL	BL	BL	BL	BL	BL	BL	PASS
3	BL	BL	BL	BL	BL	BL	BL	BL	BL	PASS
4	BL	BL	BL	BL	BL	BL	BL	BL	BL	PASS



LAB NO. : (9321)355-0919-R1
 DATE : Dec 29, 2021
 PAGE : 22 OF 28

-	Result									
Parameter	Lead (Pb)	Cadmium (Cd)	Mercury (Hg)	Chromium VI (Cr VI)	PBBs & PBDEs	DBP	BBP	DEHP	DIBP	Conclusion
Unit	mg/kg	mg/kg	mg/kg	mg/kg	mg/kg	mg/kg	mg/kg	mg/kg	mg/kg	-
Test Item	-	-	-	-	-	-	-	-	-	-
5	BL	BL	BL	BL	BL	BL	BL	BL	BL	PASS
6	BL	BL	BL	BL	BL	BL	BL	BL	BL	PASS
7	BL	BL	BL	BL	BL	BL	BL	BL	BL	PASS
8	BL	BL	BL	BL	BL	BL	BL	BL	BL	PASS
9	BL	BL	BL	BL	BL	BL	BL	BL	BL	PASS
10	BL	BL	BL	BL	BL	BL	BL	BL	BL	PASS
11	BL	BL	BL	BL	BL	BL	BL	BL	BL	PASS
12	BL	BL	BL	BL	ND*	BL	BL	BL	BL	PASS
13	BL	BL	BL	Negative*	NA	NA	NA	NA	NA	PASS
14	BL	BL	BL	BL	BL	NA	NA	NA	NA	PASS
15	BL	BL	BL	BL	BL	NA	NA	NA	NA	PASS
16	BL	BL	BL	BL	BL	BL	BL	BL	BL	PASS
17	BL	BL	BL	BL	BL	BL	BL	BL	BL	PASS
18	BL	BL	BL	BL	BL	BL	BL	BL	BL	PASS
19	BL	BL	BL	BL	BL	BL	BL	BL	BL	PASS
20	BL	BL	BL	BL	BL	BL	BL	BL	BL	PASS
21	BL	BL	BL	BL	BL	NA	NA	NA	NA	PASS
22	BL	BL	BL	BL	BL	BL	BL	BL	BL	PASS
23	BL	BL	BL	BL	BL	BL	BL	BL	BL	PASS
24	BL	BL	BL	BL	BL	BL	BL	BL	BL	PASS
25	BL	BL	BL	BL	BL	BL	BL	BL	BL	PASS
26	BL	BL	BL	BL	BL	BL	BL	BL	BL	PASS
27	BL	BL	BL	BL	BL	BL	BL	BL	BL	PASS
28	BL	BL	BL	BL	BL	BL	BL	BL	BL	PASS
29	BL	BL	BL	BL	BL	BL	BL	BL	BL	PASS
30	BL	BL	BL	BL	BL	BL	BL	BL	BL	PASS
31	BL	BL	BL	BL	BL	BL	BL	BL	BL	PASS
32	BL	BL	BL	Negative*	NA	NA	NA	NA	NA	PASS
33	BL	BL	BL	BL	BL	BL	BL	BL	BL	PASS
34	BL	BL	BL	Negative*	BL	NA	NA	NA	NA	PASS
35	BL	BL	BL	BL	BL	BL	BL	BL	BL	PASS
36	BL	BL	BL	BL	BL	BL	BL	BL	BL	PASS
37	BL	BL	BL	BL	BL	BL	BL	BL	BL	PASS
38	BL	BL	BL	BL	NA	NA	NA	NA	NA	PASS
39	BL	BL	BL	BL	ND*	BL	BL	BL	BL	PASS
40	BL	BL	BL	BL	NA	NA	NA	NA	NA	PASS
41	BL	BL	BL	BL	NA	NA	NA	NA	NA	PASS
42	BL	BL	BL	ND*	BL	BL	BL	BL	BL	PASS
43	BL	BL	BL	BL	BL	BL	BL	BL	BL	PASS
44	BL	BL	BL	BL	BL	BL	BL	BL	BL	PASS
45	BL	BL	BL	BL	BL	BL	BL	BL	BL	PASS
46	BL	BL	BL	BL	BL	BL	BL	BL	BL	PASS
47	BL	BL	BL	BL	BL	BL	BL	BL	BL	PASS
48	BL	BL	BL	ND*	BL	BL	BL	BL	BL	PASS
49	BL	BL	BL	BL	NA	NA	NA	NA	NA	PASS
50	BL	BL	BL	ND*	BL	BL	BL	BL	BL	PASS
51	BL	BL	BL	BL	NA	NA	NA	NA	NA	PASS



LAB NO. : (9321)355-0919-R1
 DATE : Dec 29, 2021
 PAGE : 23 OF 28

-	Result									
Parameter	Lead (Pb)	Cadmium (Cd)	Mercury (Hg)	Chromium VI (Cr VI)	PBBs & PBDEs	DBP	BBP	DEHP	DIBP	Conclusion
Unit	mg/kg	mg/kg	mg/kg	mg/kg	mg/kg	mg/kg	mg/kg	mg/kg	mg/kg	-
Test Item	-	-	-	-	-	-	-	-	-	-
52	>1500 [#]	BL	BL	BL	BL	NA	NA	NA	NA	PASS
53	BL	BL	BL	BL	ND*	BL	BL	BL	BL	PASS
54	BL	BL	BL	BL	NA	NA	NA	NA	NA	PASS
55	BL	BL	BL	BL	BL	BL	BL	BL	BL	PASS
56	BL	BL	BL	BL	NA	NA	NA	NA	NA	PASS
57	BL	BL	BL	BL	BL	BL	BL	BL	BL	PASS
58	BL	BL	BL	BL	NA	NA	NA	NA	NA	PASS
59	BL	BL	BL	BL	BL	BL	BL	BL	BL	PASS
60	BL	BL	BL	BL	BL	BL	BL	BL	BL	PASS
61	BL	BL	BL	BL	BL	BL	BL	BL	BL	PASS
62	BL	BL	BL	BL	BL	NA	NA	NA	NA	PASS
63	BL	BL	BL	BL	BL	NA	NA	NA	NA	PASS
64	BL	BL	BL	BL	NA	NA	NA	NA	NA	PASS
65	>1500 [#]	BL	BL	BL	ND*	BL	BL	BL	BL	PASS
66	BL	BL	BL	BL	BL	NA	NA	NA	NA	PASS
67	BL	BL	BL	BL	ND*	BL	BL	BL	BL	PASS
68	BL	BL	BL	BL	NA	NA	NA	NA	NA	PASS
69	BL	BL	BL	BL	BL	BL	BL	BL	BL	PASS
70	18.6*	BL	BL	BL	NA	NA	NA	NA	NA	PASS
71	BL	BL	BL	BL	ND*	BL	BL	BL	BL	PASS
72	BL	BL	BL	BL	BL	BL	BL	BL	BL	PASS
73	BL	BL	BL	BL	BL	BL	BL	BL	BL	PASS
74	BL	BL	BL	BL	NA	NA	NA	NA	NA	PASS
75	BL	BL	BL	BL	NA	NA	NA	NA	NA	PASS
76	BL	BL	BL	Negative*	BL	NA	NA	NA	NA	PASS
77	BL	BL	BL	BL	ND*	BL	BL	BL	BL	PASS
78	BL	BL	BL	BL	ND*	BL	BL	BL	BL	PASS
79	BL	BL	BL	BL	BL	BL	BL	BL	BL	PASS
80	BL	BL	BL	BL	ND*	BL	BL	BL	BL	PASS
81	BL	BL	BL	Negative*	BL	NA	NA	NA	NA	PASS
82	BL	BL	BL	BL	NA	NA	NA	NA	NA	PASS
83	BL	BL	BL	BL	ND*	BL	BL	BL	BL	PASS
84	BL	BL	BL	BL	BL	BL	BL	BL	BL	PASS
85	BL	BL	BL	BL	BL	BL	BL	BL	BL	PASS
86	BL	BL	BL	BL	ND*	BL	BL	BL	BL	PASS
87	BL	BL	BL	BL	ND*	BL	BL	BL	BL	PASS
88	BL	BL	BL	BL	NA	NA	NA	NA	NA	PASS
89	BL	BL	BL	BL	NA	NA	NA	NA	NA	PASS
90	BL	BL	BL	Negative*	NA	NA	NA	NA	NA	PASS
91	BL	BL	BL	Negative*	NA	NA	NA	NA	NA	PASS
92	BL	>150 [#]	BL	BL	NA	NA	NA	NA	NA	PASS
93	BL	BL	BL	Negative*	NA	NA	NA	NA	NA	PASS
94	BL	BL	BL	Negative*	NA	NA	NA	NA	NA	PASS
95	BL	BL	BL	BL	BL	BL	BL	BL	BL	PASS
96	BL	BL	BL	ND*	BL	BL	BL	BL	BL	PASS
97	BL	BL	BL	Negative*	NA	NA	NA	NA	NA	PASS
98	BL	BL	BL	Negative*	NA	NA	NA	NA	NA	PASS



LAB NO. : (9321)355-0919-R1
 DATE : Dec 29, 2021
 PAGE : 24 OF 28

-	Result									
Parameter	Lead (Pb)	Cadmium (Cd)	Mercury (Hg)	Chromium VI (Cr VI)	PBBs & PBDEs	DBP	BBP	DEHP	DIBP	Conclusion
Unit	mg/kg	mg/kg	mg/kg	mg/kg	mg/kg	mg/kg	mg/kg	mg/kg	mg/kg	-
Test Item	-	-	-	-	-	-	-	-	-	-
99	BL	BL	BL	Negative*	NA	NA	NA	NA	NA	PASS
100	BL	BL	BL	BL	BL	BL	BL	BL	BL	PASS
101	BL	BL	BL	Negative*	NA	NA	NA	NA	NA	PASS
102	BL	BL	BL	Negative*	NA	NA	NA	NA	NA	PASS
103	BL	BL	BL	BL	NA	NA	NA	NA	NA	PASS
104	BL	BL	BL	Negative*	NA	NA	NA	NA	NA	PASS
105	BL	BL	BL	BL	NA	NA	NA	NA	NA	PASS
106	BL	BL	BL	BL	BL	BL	BL	BL	BL	PASS
107	BL	BL	BL	BL	ND*	BL	BL	BL	BL	PASS
108	BL	BL	BL	BL	BL	BL	BL	BL	BL	PASS
109	BL	BL	BL	Negative*	NA	NA	NA	NA	NA	PASS
110	BL	BL	BL	BL	BL	BL	BL	BL	BL	PASS
111	BL	BL	BL	BL	NA	NA	NA	NA	NA	PASS
112	BL	BL	BL	BL	BL	BL	BL	BL	BL	PASS
113	BL	BL	BL	BL	BL	BL	BL	BL	BL	PASS
114	BL	BL	BL	BL	BL	BL	BL	BL	BL	PASS
115	BL	BL	BL	BL	BL	BL	BL	BL	BL	PASS
116	BL	BL	BL	BL	BL	BL	BL	BL	BL	PASS
117	BL	BL	BL	BL	NA	NA	NA	NA	NA	PASS
118	BL	BL	BL	BL	PBDEs: 630*	BL	BL	BL	BL	PASS
119	BL	BL	BL	BL	BL	BL	BL	BL	BL	PASS
120	BL	BL	BL	BL	BL	BL	BL	BL	BL	PASS
121	BL	BL	BL	BL	NA	NA	NA	NA	NA	PASS
122	BL	BL	BL	BL	BL	BL	BL	BL	BL	PASS
123	BL	BL	BL	BL	NA	NA	NA	NA	NA	PASS
124	>1500 [#]	BL	BL	BL	BL	BL	BL	BL	BL	PASS
125	BL	BL	BL	BL	BL	NA	NA	NA	NA	PASS
126	BL	BL	BL	BL	BL	BL	BL	BL	BL	PASS
127	BL	BL	BL	BL	BL	BL	BL	BL	BL	PASS
128	BL	BL	BL	BL	NA	NA	NA	NA	NA	PASS
129	BL	BL	BL	BL	BL	BL	BL	BL	BL	PASS
130	BL	BL	BL	BL	BL	BL	BL	BL	BL	PASS
131	BL	BL	BL	BL	BL	BL	BL	BL	BL	PASS
132	BL	BL	BL	BL	BL	NA	NA	NA	NA	PASS
133	BL	BL	BL	BL	BL	BL	BL	BL	BL	PASS
134	BL	BL	BL	BL	NA	NA	NA	NA	NA	PASS
135	BL	BL	BL	BL	BL	BL	BL	BL	BL	PASS
136	BL	BL	BL	BL	BL	BL	BL	BL	BL	PASS
137	BL	BL	BL	BL	BL	BL	BL	BL	BL	PASS
138	BL	BL	BL	BL	BL	BL	BL	BL	BL	PASS
139	BL	BL	BL	BL	NA	NA	NA	NA	NA	PASS
140	BL	BL	BL	BL	NA	NA	NA	NA	NA	PASS
141	BL	BL	BL	BL	NA	NA	NA	NA	NA	PASS
142	BL	BL	BL	BL	BL	BL	BL	BL	BL	PASS
143	BL	BL	BL	BL	BL	NA	NA	NA	NA	PASS
144	BL	BL	BL	BL	NA	NA	NA	NA	NA	PASS



LAB NO. : (9321)355-0919-R1
 DATE : Dec 29, 2021
 PAGE : 25 OF 28

-	Result									
Parameter	Lead (Pb)	Cadmium (Cd)	Mercury (Hg)	Chromium VI (Cr VI)	PBBs & PBDEs	DBP	BBP	DEHP	DIBP	Conclusion
Unit	mg/kg	mg/kg	mg/kg	mg/kg	mg/kg	mg/kg	mg/kg	mg/kg	mg/kg	-
Test Item	-	-	-	-	-	-	-	-	-	-
145	BL	BL	BL	Negative*	NA	NA	NA	NA	NA	PASS
146	BL	BL	BL	Negative*	NA	NA	NA	NA	NA	PASS
147	BL	BL	BL	BL	BL	NA	NA	NA	NA	PASS
148	BL	BL	BL	BL	NA	NA	NA	NA	NA	PASS
149	BL	BL	BL	BL	NA	NA	NA	NA	NA	PASS
150	BL	BL	BL	Negative*	NA	NA	NA	NA	NA	PASS
151	BL	BL	BL	BL	NA	NA	NA	NA	NA	PASS
152	BL	BL	BL	BL	NA	NA	NA	NA	NA	PASS
153	BL	BL	BL	Negative*	NA	NA	NA	NA	NA	PASS
154	BL	BL	BL	Negative*	NA	NA	NA	NA	NA	PASS
155	BL	BL	BL	BL	NA	NA	NA	NA	NA	PASS
156	BL	BL	BL	Negative*	NA	NA	NA	NA	NA	PASS
157	BL	BL	BL	Negative*	NA	NA	NA	NA	NA	PASS
158	BL	BL	BL	BL	BL	BL	BL	BL	BL	PASS
159	BL	BL	BL	BL	BL	BL	BL	BL	BL	PASS
160	BL	BL	BL	BL	BL	BL	BL	BL	BL	PASS
161	BL	BL	BL	Negative*	NA	NA	NA	NA	NA	PASS
162	BL	BL	BL	BL	BL	BL	BL	BL	BL	PASS
163	BL	BL	BL	BL	ND*	BL	BL	BL	BL	PASS
164	BL	BL	BL	BL	NA	NA	NA	NA	NA	PASS
165	BL	BL	BL	BL	BL	BL	BL	BL	BL	PASS
166	BL	BL	BL	BL	BL	NA	NA	NA	NA	PASS
167	BL	BL	BL	BL	BL	BL	BL	BL	BL	PASS
168	BL	BL	BL	BL	BL	BL	BL	BL	BL	PASS
169	BL	BL	BL	BL	ND*	BL	BL	BL	BL	PASS
170	BL	BL	BL	Negative*	NA	NA	NA	NA	NA	PASS
171	BL	BL	BL	BL	NA	NA	NA	NA	NA	PASS
172	BL	BL	BL	BL	BL	BL	BL	BL	BL	PASS
173	BL	BL	BL	BL	BL	BL	BL	BL	BL	PASS
174	BL	BL	BL	BL	BL	BL	BL	BL	BL	PASS
175	BL	BL	BL	BL	BL	BL	BL	BL	BL	PASS
176	BL	BL	BL	BL	BL	BL	BL	BL	BL	PASS
177	BL	BL	BL	BL	NA	NA	NA	NA	NA	PASS
178	BL	BL	BL	BL	NA	NA	NA	NA	NA	PASS
179	BL	BL	BL	BL	ND*	BL	BL	BL	BL	PASS
180	BL	BL	BL	BL	NA	NA	NA	NA	NA	PASS
181	BL	BL	BL	BL	NA	NA	NA	NA	NA	PASS
182	BL	BL	BL	BL	NA	NA	NA	NA	NA	PASS
183	BL	BL	BL	BL	BL	NA	NA	NA	NA	PASS
184	BL	BL	BL	BL	BL	BL	BL	BL	BL	PASS
185	BL	BL	BL	BL	BL	NA	NA	NA	NA	PASS
186	BL	BL	BL	BL	ND*	BL	BL	BL	BL	PASS
187	BL	BL	BL	BL	NA	NA	NA	NA	NA	PASS



LAB NO. : (9321)355-0919-R1
DATE : Dec 29, 2021
PAGE : 26 OF 28

Note / Key :

ND = Not detected	">" = Greater than	"<" = Less than
BL = Below Limit	NA = Not applicable	EX = Exempted
NR = Not requested	mg/kg = milligram(s) per kilogram	ppm = part(s) per million
Detection Limit: See Appendix.		

Remark :

- The testing approach is listed in table of Appendix.
- * denotes as reported result(s) was (were) performed by wet chemistry method. Others were screened by XRF. For XRF screening, the result(s) of Cr VI was (were) reported as total chromium and the result(s) of PBBs and PBDEs was (were) reported as total bromine. Also, the XRF result(s) may be different to the actual content based on various factors including, but not limit to, sample size, thickness, area, non-uniformity composition, surface flatness.
- Only selected example(s) is (are) indicated on the photograph(s) in Comment.
- According to European Parliament and Council Directive 2011/65/EU, Article 5 "Adaptation of the Annexes to scientific and technical progress", exemption(s) should be granted to the materials and components of Test Item(s) in the lists in Annexes III and IV of this directive.
- #According to Annex III of Directive (EU)2015/863 Amendment of European Parliament and Council Directive 2011/65/EU, exemptions were granted a few materials and Clause 7(c)-I is reiterated here "Electrical and electronic components containing lead in a glass or ceramic other than dielectric ceramic in capacitors, e.g. piezoelectronic devices, or in a glass or ceramic matrix compound.". Test Item(s) < 52 > was (were) claimed as is by client (received as is). Therefore, this (these) Test Item(s) containing the found lead level should be exempted.
- #According to Annex III of Directive (EU)2015/863 Amendment of European Parliament and Council Directive 2011/65/EU, exemptions were granted a few materials and Clause 7(a) is reiterated here "Lead in high melting temperature type solders (i.e. lead-based alloys containing 85 % by weight or more lead)". Test Item(s) < 65,124 > was (were) claimed as is by client (received as is). Therefore, this (these) Test Item(s) containing the found lead level should be exempted.
- According to Annex III of European Parliament and Council Directive 2011/65/EU, exemptions were granted a few materials and Clause 8(b)-I is reiterated here "Cadmium and its compounds in electrical contacts used in: circuit breakers, thermal sensing controls, thermal motor protectors (excluding hermetic thermal motor protectors), AC switches rated at: 6 A and more at 250 V AC and more, or 12 A and more at 125 V AC and more, DC switches rated at 20 A and more at 18 V DC and more, and switches for use at voltage supply frequency \geq 200 Hz.". Test Item(s) < 92 > was (were) claimed as is by client (received as is). Therefore, this (these) Test Item(s) containing the found cadmium level should be exempted.
- The above result(s) of 1-110, 112-187 is/are transferred from (9321)327-6017 dated on Dec 21, 2021.



LAB NO. : (9321)355-0919-R1
 DATE : Dec 29, 2021
 PAGE : 27 OF 28

APPENDIX

List of Analytes and their Corresponding Test Methods, Detection Limit and Maximum Allowable Limit [Compliance Test for European Parliament and Council Directive 2011/65/EU with its Amendments (EU) 2015/863] :

No.	Name of Analyte(s)	Detection Limit (mg/kg)				Maximum Allowable Limit (mg/kg)
		X-ray fluorescence (XRF) ^[a]			Wet Chemistry	
		Plastic	Metallic / glass / ceramic	Others		
1	Lead (Pb)	100	200	200	10 ^[b]	1000
2	Cadmium (Cd)	50	50	50	10 ^[b]	100
3	Mercury (Hg)	100	200	200	10 ^[c]	1000
4	Chromium (Cr)	100	200	200	NA	NA
5	Chromium VI (Cr VI)	NA	NA	NA	3 ^[g, h] / 10 ^[d] / See ^[e, i]	1000 / Negative ^[i]
6	Bromine (Br)	200	NA	200	NA	NA
7	Polybromobiphenyls (PBBs) - Bromobiphenyl (MonoBB) - Dibromobiphenyl (DiBB) - Tribromobiphenyl (TriBB) - Tetrabromobiphenyl (TetraBB) - Pentabromobiphenyl (PentaBB) - Hexabromobiphenyl (HexaBB) - Heptabromobiphenyl (HeptaBB) - Octabromobiphenyl (OctaBB) - Nonabromobiphenyl (NonaBB) - Decabromobiphenyl (DecaBB)	NA	NA	NA	Each 50 ^[f]	Sum 1000
8	Polybromodiphenyl ethers (PBDEs) - Bromodiphenyl ether (MonoBDE) - Dibromodiphenyl ether (DiBDE) - Tribromodiphenyl ether (TriBDE) - Tetrabromodiphenyl ether (TetraBDE) - Pentabromodiphenyl ether (PentaBDE) - Hexabromodiphenyl ether (HexaBDE) -Heptabromodiphenyl ether (HeptaBDE) - Octabromodiphenyl ether (OctaBDE) - Nonabromodiphenyl ether (NonaBDE) - Decabromodiphenyl ether (DecaBDE)	NA	NA	NA	Each 50 ^[f]	Sum 1000
9	Dibutyl phthalate (DBP) Butyl benzyl phthalate (BBP) Di-2-ethylhexyl phthalate (DEHP) Diisobutyl phthalate (DIBP)	NA	NA	NA	Each 500 ^[j]	Each 1000

NA = Not applicable IEC = International Electrotechnical Commission

^[a] Test method with reference to International Standard IEC 62321-3-1: 2013.

^[b] Test method with reference to International Standard IEC 62321-5: 2013.

^[c] Test method with reference to International Standard IEC 62321-4: 2013+AMD1: 2017 CSV.

^[d] Polymers and Electronics - Test method with reference to International Standard IEC 62321-7-2: 2017.

^[e] Metal - Test method with reference to International Standard IEC 62321-7-1: 2015.

^[f] Test method with reference to International Standard IEC 62321-6: 2015.

^[g] Leather - Test method International Standard ISO 17075: 2017.

^[h] Other Than Metal, Leather, Polymers and Electronics - Test method with reference to International Standard ISO 17075: 2007.

^[i] Result(s) of Cr VI for metallic material(s) was (were) expressed in term of positive and negative. Negative means the absence of Cr VI on the tested areas and the result(s) was (were) regarded as in compliance with European Parliament and Council Directive 2011/65/EU, Article 4(1). While, positive means the presence of Cr VI on tested areas and the result(s) was (were) regarded as in conflict with European Parliament and Council Directive 2011/65/EU, Article 4(1).

^[j] Test method with reference International Standard IEC 62321-8: 2017.

Testing Approach [Compliance Test for European Parliament and Council Directive 2011/65/EU] :

The testing approach was with reference to the following document(s).

- 1 International Standards IEC 62321-1: 2013 and IEC 62321-2: 2013
- 2 "RoHS Enforcement Guidance Document Version 1" by EU RoHS Enforcement Authorities Informal Network. (May 2006)
- 3 "RoHS Regulations - Government Guidance Notes" by United Kingdom Department for Business Innovation & Skills. (February 2011)
- 4 "Final Report to RoHS substances (Hg, Pb, Cr(VI), Cd, PBB and PBDE) in electrical and electronic equipment in Belgium" by Belgium Federal Public Service Health, Food Chain Safety and Environment. (November 2005)



LAB NO. : (9321)355-0919-R1
DATE : Dec 29, 2021
PAGE : 28 OF 28

AMENDMENT DETAILS

No.	Changes
1	Revise sample description

END