

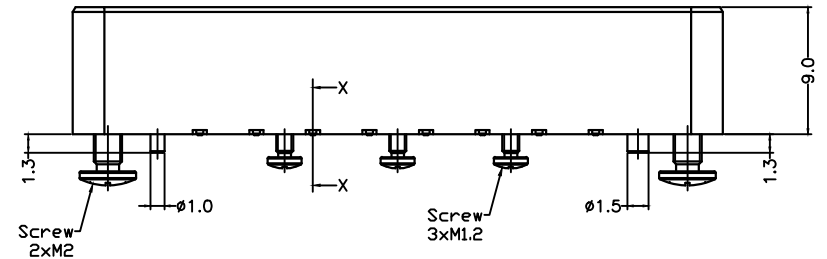
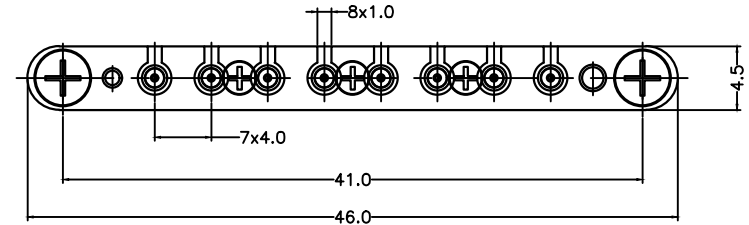
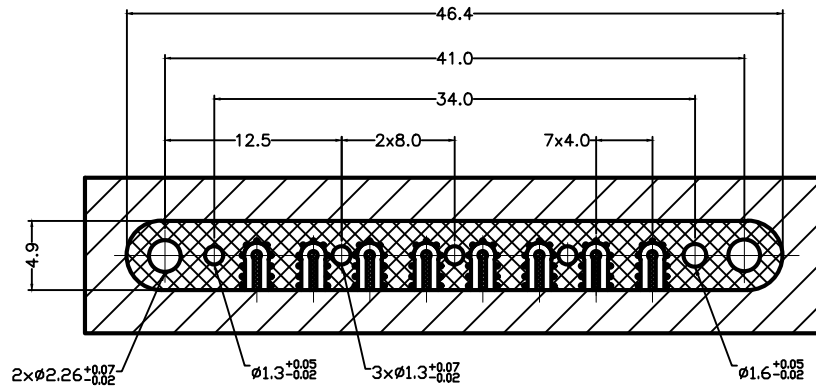


Minimal space is needed as following.
Do not place other parts closer than market area.

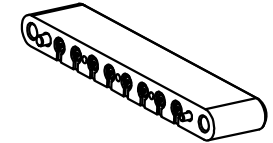
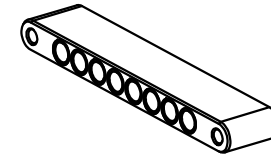
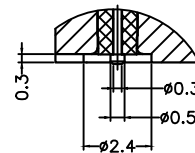


Solder area

PCB Mounting hole


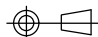


X-X View



1. Material and Plating:
 - 1.1 body: brass / gold plated
 - 1.2 center conductor: beryllium copper / gold plated
 - 1.3 insulator: PEEK or PEI
2. Electrical characteristics:
 - 2.1 impedance: 50 Ω
 - 2.2 frequency range: DC to 40 GHz
 - 2.3 return loss: ≥ 20 dB
 - 2.4 work voltage: 500 Vrms
3. Mechanical properties:
 - 3.1 mechanical life: 500 cycles
 - 3.2 mating force(per single channel): ≤ 3.5N max.
 - 3.3 demating force(per single channel): ≤ 3.5 N max.
4. working environment:
 - 4.1 working temperature: -55℃ to +125℃

Notes: 3pcs M1.2 and 2pcs M2 screws to be packaged and shipped unassembled

Dimension: MM	Series: ---	Cable: N/A		D.P.F technology CO., LTD 德普福电子科技有限公司
General tolerance Unless Otherwise Specified	Product Spec.:	Assembly Instr.:		
0 Places: ±1	Drawn: Li Xu	05-01-2019	Multi Channel For PCB, 1 X 8	
1 Places: ±1	Checked: Peter Guo	05-01-2019		
2 Places: ±1	Approved: David ma	05-01-2019	Part Number: RJKL-S08E-M4-YA	
3 Places: ±1	CUSTOMER DRAWING		Drawing Number: RJKL-S08E-M4-YA	
4 Places: ±1	This drawing is a controlled document		Rev.: A	
Angles:	Projection: 		Scale: N/A	Remark: Page: 1/1
Weight: ---				