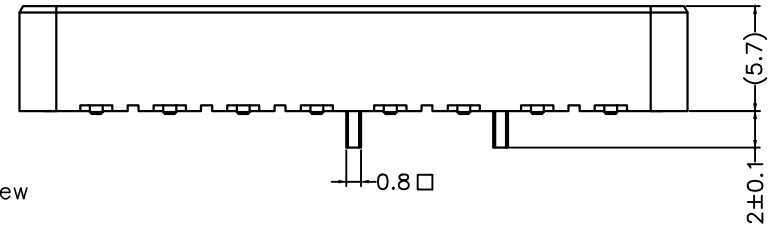
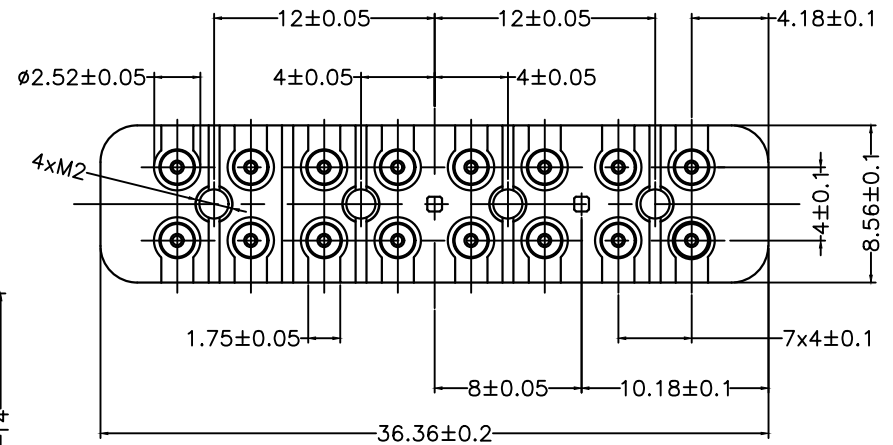
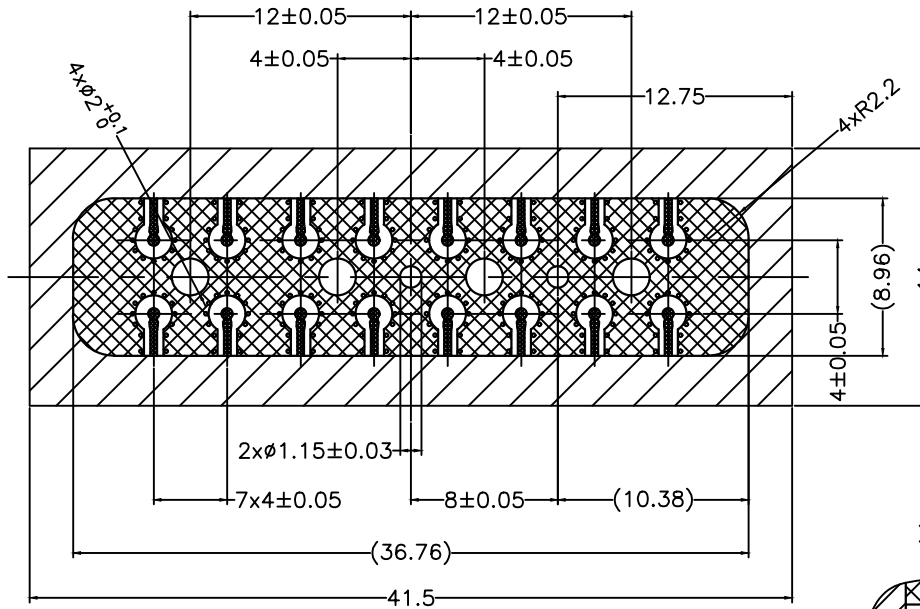
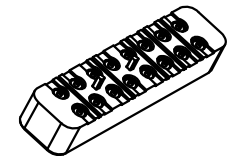
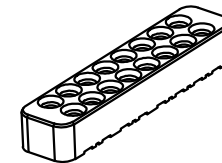
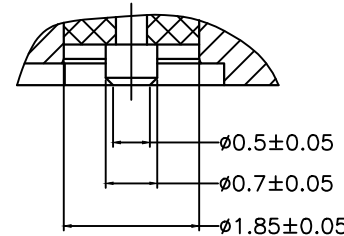
 Minimal space is needed as following.  
Do not place other parts closer than market area.

 Solder area


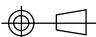
PCB Mounting hole



X-X View



1. Material and Plating:
  - 1.1 body: brass / gold plated
  - 1.2 outer contact: beryllium copper / gold plated
  - 1.3 center conductor: beryllium copper / gold plated
  - 1.4 insulator: PEEK or PEI
2. Electrical characteristics:
  - 2.1 impedance: 50 Ω
  - 2.2 frequency range: DC to 40 GHz
  - 2.3 return loss: ≥ 20 dB
  - 2.4 work voltage: 500 Vrms
3. Mechanical properties:
  - 3.1 mechanical life: 500 cycles
  - 3.2 mating force(per single channel): ≤ 3.5N max.
  - 3.3 demating force(per single channel): ≤ 3.5 N max.
4. working environment:
  - 4.1 working temperature: -55℃ to +125℃

Dimension: MM	Series: ---	Cable: N/A		D.P.F technology CO., LTD 德普福电子科技有限公司
General tolerance Unless Otherwise Specified	Product Spec.:	Assembly Instr.:		
0 Places: ±1	Drawn: Li Xu	05-01-2019	Multi Channel For PCB, 2 X 8	
1 Places: ±1	Checked: Peter Guo	05-01-2019		
2 Places: ±1	Approved: David ma	05-01-2019	Part Number: RJHS-S16E-M4-NB	
3 Places: ±1	CUSTOMER DRAWING		Drawing Number: RJHS-S16E-M4-NB	
4 Places: ±1	This drawing is a controlled document		Rev.: A	
Angles:	Projection: 		Scale: N/A	Remark:
Weight: ---			Page: 1/1	