

# SIC801D

## Photo Interrupter

SIC801D is Transmission type photointerrupter combined high power GaAs IRED with Photo-IC. Being suitable for highly accurate position detecting, it is great help in developing an object detecting system of high performance and high reliability.

### Features

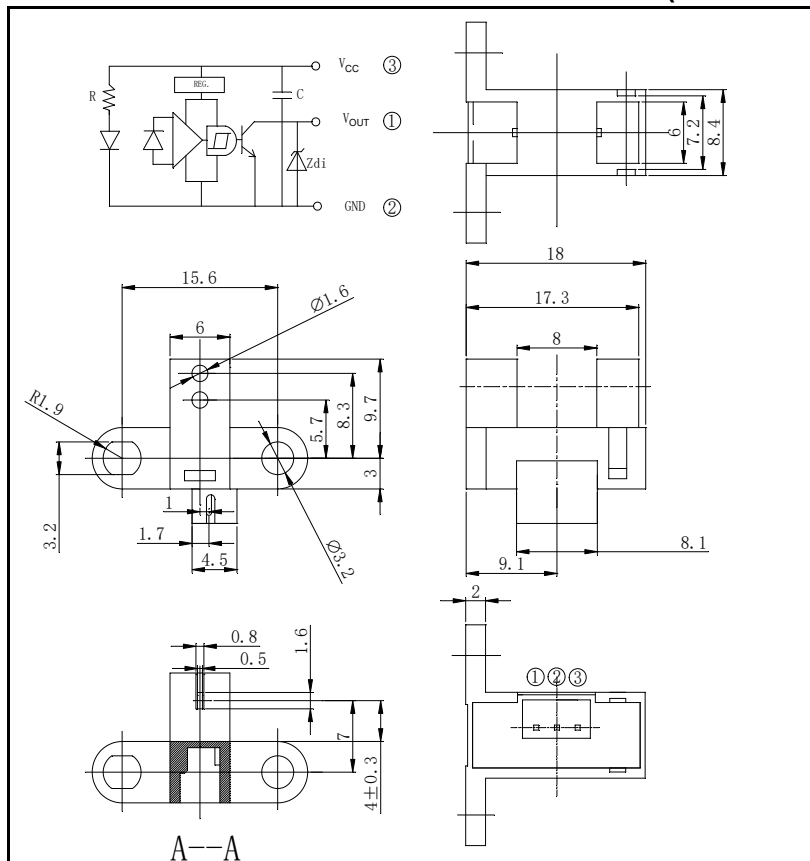
- Supply voltage 5V
- GAP:8.0mm
- With the installation positioning boss
- RoHS Compliance
- Connector: TJC2004-3A
- Socket connector: TJC2004-3Y

### Applications

- Copiers, Printers, ATM
- Amusement machines
- Exchanging machines
- Ticket vending machines

### Dimensions

(unit: mm)



### Maximum Ratings

(Ta=25°C)

Item	Symbol	Ratings	Unit
Supply voltage	$V_{CC}$	-0.5~+7	V
Output voltage	$V_O$	7	V
Low level output current	$I_{OL}$	16	mA
Power dissipation	$P_D$	100	mW
Operating temperature *1*2	$T_{opr}$	-25~+75	°C
Storage temperature *1*2	$T_{stg}$	-30~+85	°C

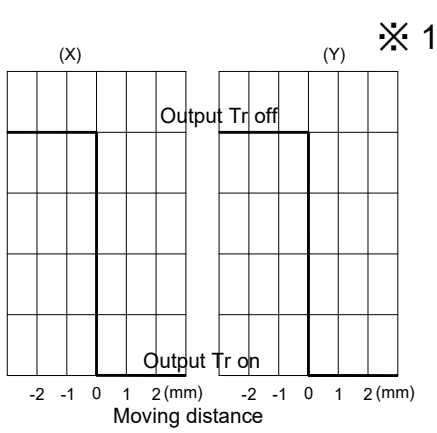
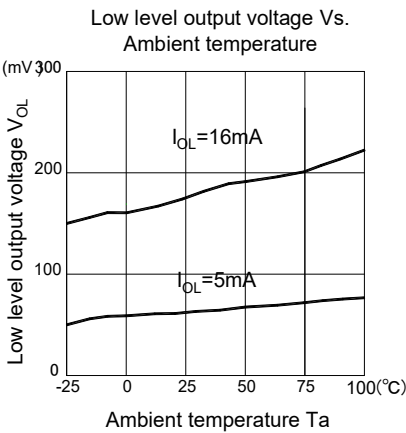
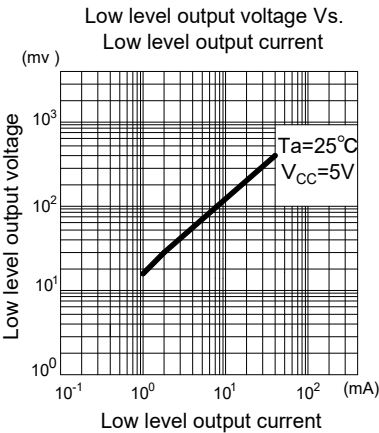
\*1. No icebond or dew

\*2. The soldering should be 1.2mm away from bottom of the holder t=within 3s

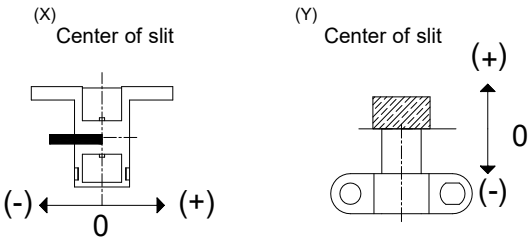
SIC801D

Electro-Optical Characteristics (Ta=25°C)

Item	Symbol	Conditions	Min	Typ	Max	Unit
Operating supply voltage	$V_{CC}$	-	4.5	-	5.5	V
Low level output voltage	$V_{OL}$	$V_{CC}=5V, I_{OL}=16mA, (Shading)$	-	0.2	0.4	V
High level output voltage	$V_{OH}$	$V_{CC}=5V, R_L=10K \Omega, (Non-shading)$	4.5	-	-	V
Low level supply current	$I_{CCL}$	$V_{CC}=5V, (Shading)$	-	19	35	mA
High level supply current	$I_{CCH}$	$V_{CC}=5V, (Non-shading)$	-	19	35	mA
Frequency	f	$V_{CC}=5V, R_L=10K \Omega$	3000	-	-	H <sub>z</sub>



Method of measure position detection characteristic ※ 1



The contents of this data sheet are subject to change without advance notice for the purpose of improvement. When using this product, would you please refer to the latest specifications.

## SIC801D

### Packing Specification

- 1.Fixed quantity (max 500pcs) of the products are packed into plastic bag(300\*380)
- 2.Five bags of the products are put into #2 box
3. Two #2 boxes are put into #3 box(max 5000pcs)
4. Packing slip is pasted on #3 box.

