

SML655-CL01 Infrared Emitting Diodes

SML655-CL01 a high-power IrED mounted in a Durable Hermetically sealed TO-46 Metal can Package Providing years of reliable performance even under Demanding conditions such as use outdoors

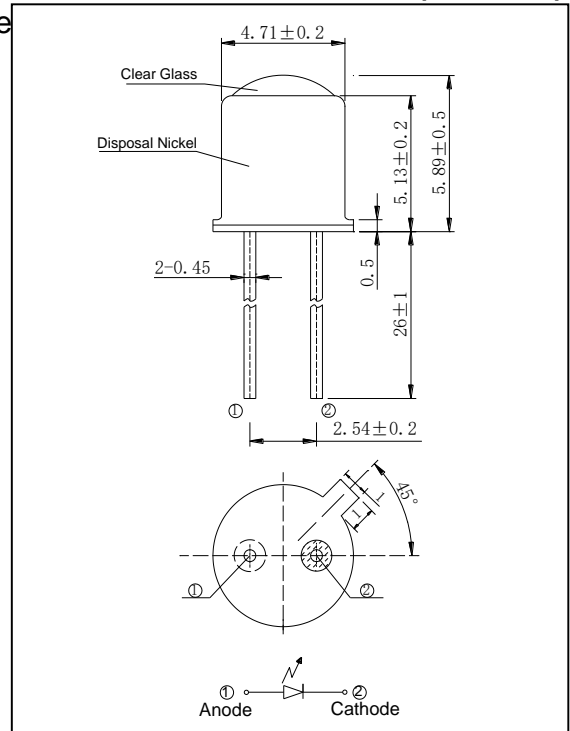
Features

- TO-46 Can type with glass lense
- High reliability
- High output power

Application

- Optical switches
- Encoders
- Photointerrupters

Dimensions (Unit:mm)



MAXIMUM RATINGS

(Ta= 25°C)

Item	Symbol	Rating	Unit
Power dissipation	P _D	180	mW
Forward current	I _F	100	mA
Reverse voltage	V _R	10	V
Pulse forward current * ¹	I _{FP}	0.5	A
Operating temp.	T _{opr.}	-40~+85	°C
Storage temp.	T _{stg.}	-40~+100	°C
Soldering temp. * ²	T _{sol.}	260	°C

Note : *1. pulse width : $t_w \leq 100\mu\text{sec}$.period : T=10msec.

*2. For MAX.5 seconds at the position of 2mm from the edge

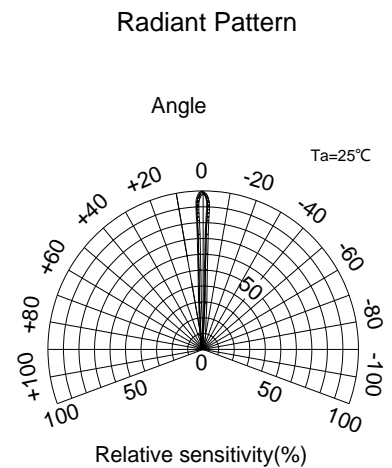
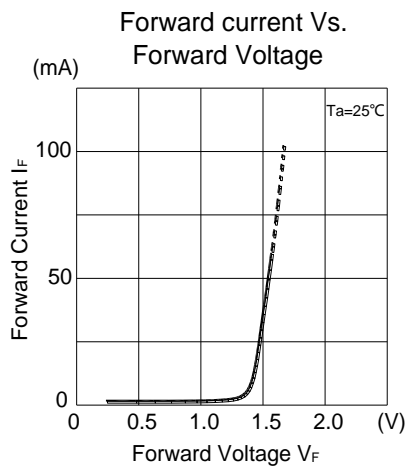
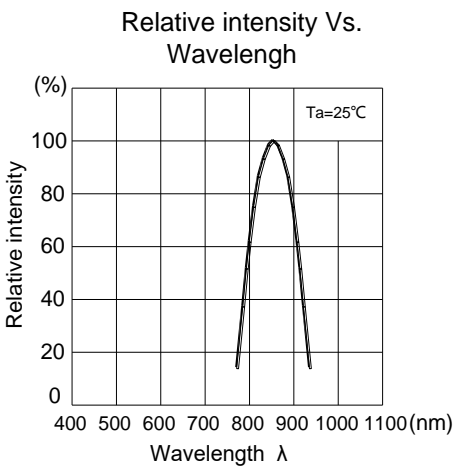
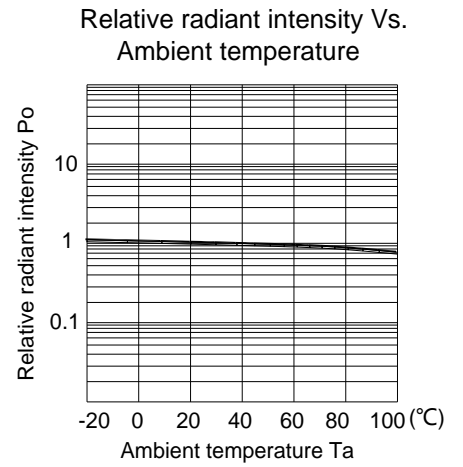
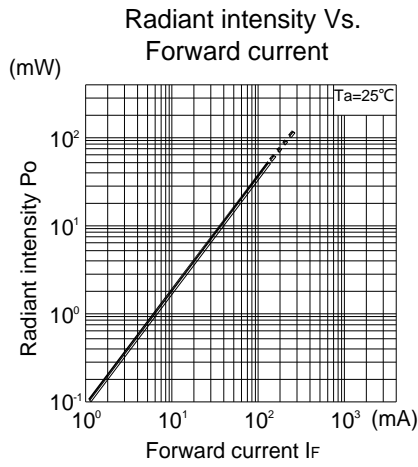
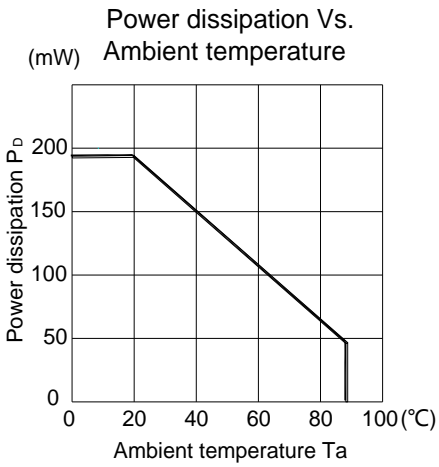
ELECTRO- OPTICAL CHARACTERISTICS

(Ta= 25°C)

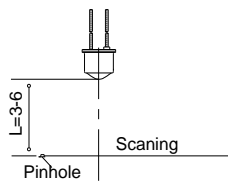
Items	Symbol	Condition	Min.	Typ.	Max.	Unit
Forward voltage	V _F	I _F =20mA	-	1.35	1.8	V
Reverse current	I _R	V _R =5V	-	-	10	μA
Luminous intensity	P _o	I _F =20mA	-	3.8	-	mW
Peak wavelength	λ _p	I _F =20mA	-	850	-	nm
Spectral bandwidth 50%	Δλ	I _F =20mA	-	30	-	nm
Beam Diameter	Φ _B	L=5mm	-	3.6	-	mm

Infrared Emitting Diodes

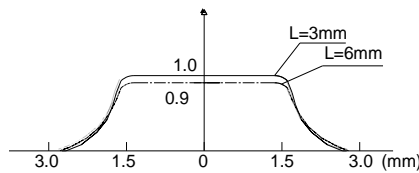
SML655-CL01



Radiation Pattern test method



Radiation Pattern



SML655-CL01

Packing Specification

- 1.Fixed quantity (200pcs) of the products are packed into plastic bag
- 2.Five bags of the products are put into #1 box
3. Ten #1 boxes are put into #2 box and two #2 boxes are put into #3 box(max 20,000pcs)
4. Packing slip is pasted on the out box

