

SIT604 Photo Interrupter

Dimensions

(Unit: mm)

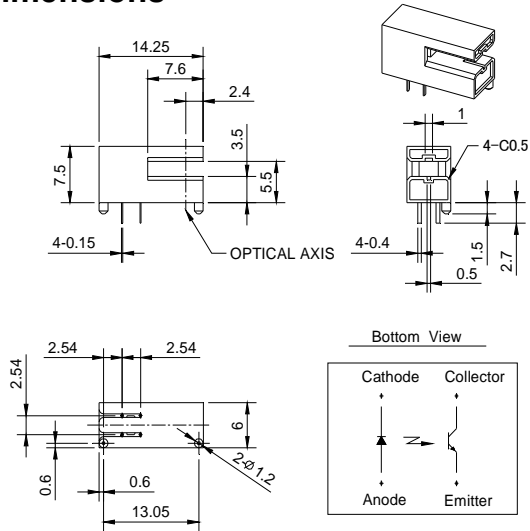
The SIT604 is a photointerrupter high-performance standard type, combines high-output GaAs IRED with high sensitive phototransistor.

Features

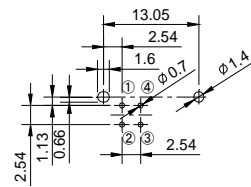
- High speed responses
- GAP:2.0mm
- With the installation positioning boss
- RoHS Compliance

Applications

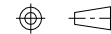
- Printer
- Copier
- Fax



Recommended installation holes for reference only (component side)



- ① Anode
- ② Cathode
- ③ Collector
- ④ Emitter



Technical drawings according to DIN specifications

General Tolerance (±0.2)

Maximum Ratings

(Ta=25°C)

Item		Symbol	Rating	Unit
Input	Power dissipation	P_D	75	mW
	Forward current	I_F	50	mA
	Reverse voltage	V_R	5	V
Output	Collector power dissipation	P_C	75	mW
	Collector current	I_C	20	mA
	Collector-Emitter voltage	V_{CEO}	30	V
	Emitter-Collector voltage	V_{ECO}	5	V
Operating temperature		Topr.	-20 ~ +85	°C
Storage temperature ^{*1}		Tstg.	-30 ~ +85	°C
Soldering temperature ^{*2}		Tsol.	260	°C

*1. No icebound or dew.

*2. The soldering should be 1.2mm away from bottom of the holder t=within 3s

The contents of this data sheet are subject to change without advance notice for the purpose of improvement. When using this product, would you please refer to the latest specifications.

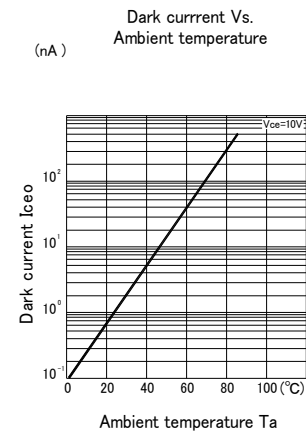
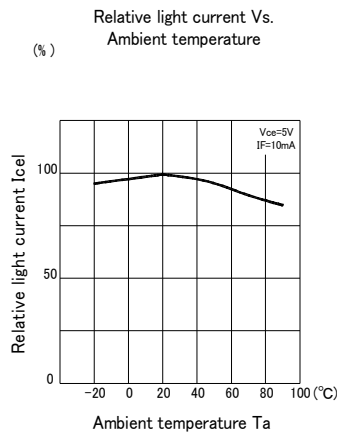
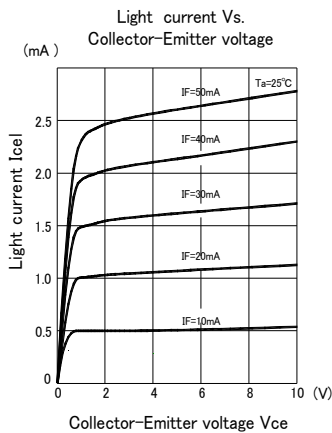
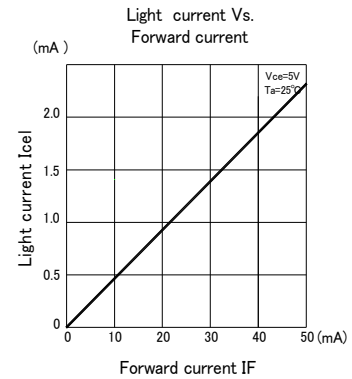
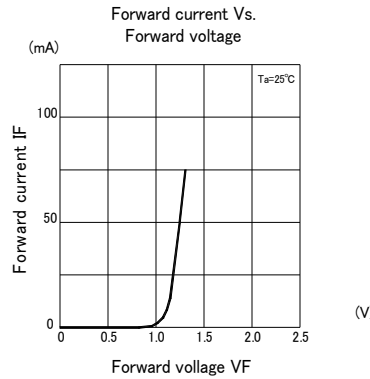
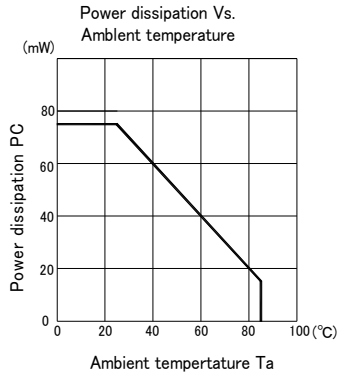
Photo Interrupter

SIT604

Electro-Optical Characteristics

(Ta=25°C)

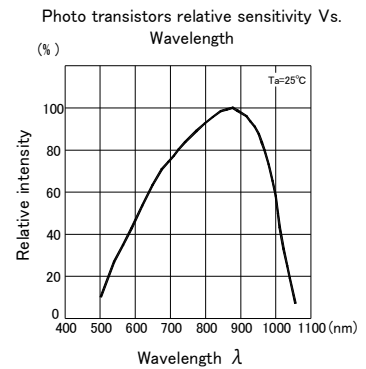
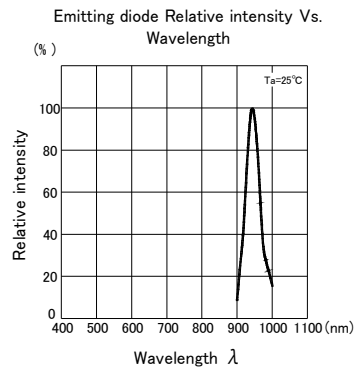
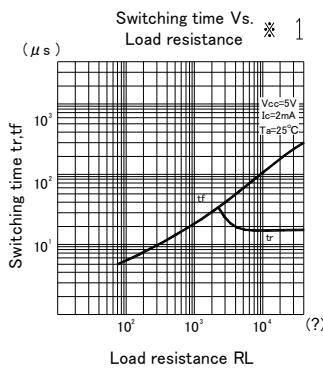
Item		Symbol	Conditions	Min.	Typ.	Max.	Unit
Input	Forward voltage	V_F	$I_F=20\text{mA}$	-	1.2	1.4	V
	Reverse current	I_R	$V_R=5\text{V}$	-	-	10	μA
	Peak wavelength	λ_P	$I_F=20\text{mA}$	-	940	-	nm
Output	Dark current	I_{CEO}	$V_{CE}=10\text{V}$ $E_V=0\text{lx}$	-	-	1	μA
	Peak SENS.Wavelength	λ_P	-	-	880	-	nm
Transfer characteristics	Light current	I_{CEL}	$I_F=20\text{mA}$ $V_{CE}=5\text{V}$ 入光状态 (Non-Shading)	0.5	-	10	mA
	Leak current	I_{CEOD}	$I_F=20\text{mA}$ $V_{CE}=5\text{V}$ 遮光状态 (Shading)	-	0.5	10	μA
	C-E sat.voltage	$V_{CE(sat)}$	$I_F=20\text{mA}$ $I_C=0.05\text{mA}$	-	0.15	0.4	V
	Rise time	tr	$V_{CC}=5\text{V}$ $R_L=1\text{K}\Omega$	-	50	-	μs
	Fall time	tf		-	50	-	μs



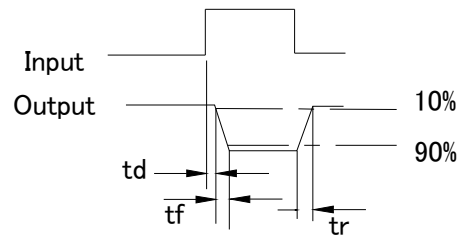
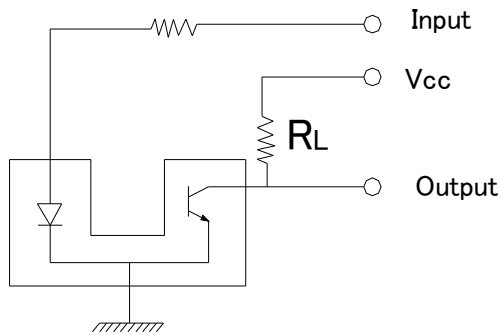
The contents of this data sheet are subject to change without advance notice for the purpose of improvement. When using this product, would you please refer to the latest specifications.

Photo Interrupter

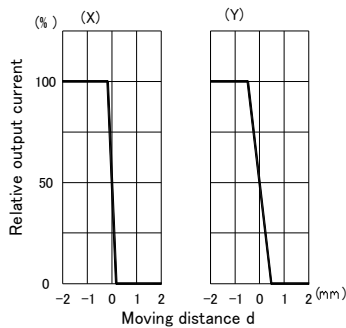
SIT604



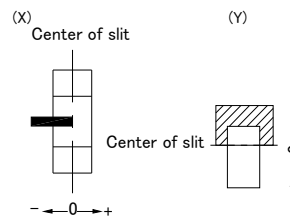
※ 1 Switching time measurement circuit



Relate output current Vs. Moving distance ※ 2



※ 2 Method of measure position detection characteristic



The contents of this data sheet are subject to change without advance notice for the purpose of improvement. When using this product, would you please refer to the latest specifications.

Photo Interrupter

SIT604

Packing Specification

- 1.Fixed quantity (max 50pcs) of the products are packed into a Anti-Static Tube
- 2.Eight tubes of the products are tied together with a tap(max 400pcs)
- 3.Eight bundles are put into a Anti-Static BAG(max 3200pcs)
4. Three Anti-Static Bags are put into a #2 Box (max 9600pcs)
5. Two #2 Boxes are put into #3 Box(max 19200pcs)
- 6.Paste packing slip

