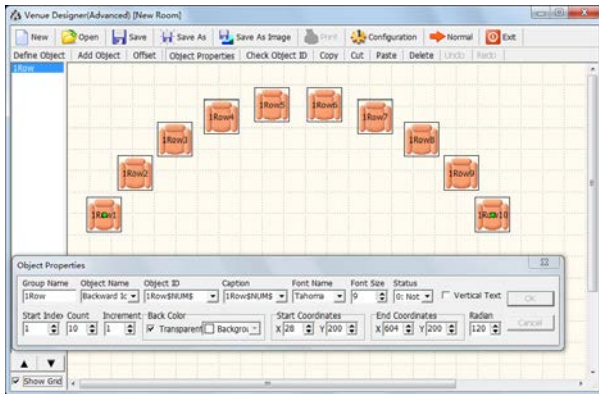


## HCS-4212/50 Professional Venue Design Module



Venue design (professional)

### Functions

In distinction from the normal edition of the Venue Design Module, the professional version has additional powerful functions to design manifold layouts of venues. The main difference is the availability of functional buttons for file operation (toolbar buttons) and object operation (buttons below toolbar buttons) in the toolbars. In addition, the functions are also available in the file right-click pop-up menu. Moreover, the Object Properties dialog box is floating on the window for fast changing the properties of current object.

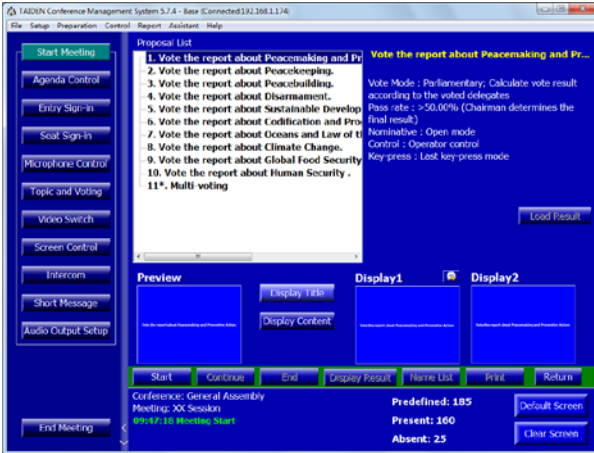
- File operation:
  - ◆ Venue design supports file operation, including: new, open, save as, and print
  - ◆ Create a new conference file: set the background color, room size and other parameters, including:
    - Background
    - Line number
    - Amount per line
    - Seat icon
    - Seat direction
    - Transparent icon or not
    - Show as MIC. icon or not
    - Re-arrange seat position or not
  - ◆ The parameters above can be changed at any time through "Configuration" menu on the toolbar
  - ◆ Add seat/microphone icons line by line, 8 seats/mics per line as default value. The amount of seats/microphones per line can be modified. While the normal edition can add only one seat at one go, the professional venue design module can add groups with more than one seat/microphone per group.
  - ◆ Shifting facility for complete layout
- Define object:
  - ◆ Picture library with default (customized and/or recurrent) objects
  - ◆ Modifiable object information, e.g. object name, image path, distinguishable colors for displaying object images in different states (e.g. signed-in etc.)

- Powerful "object properties" function: object attribute can be set and changed, including:
  - ◆ Set group name and object name
  - ◆ Set unique ID and ID display mode for every object, supporting different fonts and sizes
  - ◆ Set starting object status
  - ◆ Set a radian for the object group and design seat layout according to true seating positions
  - ◆ Set start index of the object group
  - ◆ Change the amount of the units in an object group
  - ◆ Set numbering increment
  - ◆ Set initial background color and whether transparent or not
  - ◆ Set start and end coordinates of object group
- Object ID check facilities
- Support object copy, cut, paste and delete operation
- Object arrangement can be changed

### Ordering Information

HCS-4212/50.....Professional Venue Design Module

# HCS-4214/50 Voting Management Module



Topics and voting



Delegate information



Display voting result



Unit arrangement

## Functions

Voting management, seat arrangement and delegate management sub modules.

### ■ Voting management:

- ◆ Topics information management
  - Set up, save, add or delete topics file before the meeting
  - Open topics control interface and display topics content to large screen
  - Printout the topics list and information and distribute to delegates as meeting information
  - Multiple voting facilities available, suitable for various conferences, including:
    - ◇ For/Against
    - ◇ Parliamentary: YES/NO/ABSTAIN
    - ◇ Appraisal:
      - satisfied (Three keys voting: satisfied/basicly satisfied/unsatisfied) (Two keys voting: satisfied/unsatisfied)
      - Qualified (three/two keys voting)
      - Competent (three/two keys voting)
  - Control modes: chairman control/ operator control/time controlled voting
  - Calculation: predefined or in relation to the participants attending the meeting in person
  - Register mode: nominative/ballot
  - Validity mode: first key press valid/last key press valid
  - Pass rate: between 1% and 100%
- ◆ Multi-proposal voting at one time (for HCS-4368DM/50 series)
- ◆ Display voting result to large screen
- ◆ Clear and vivid voting result display modes (numeric/bar/pie)
- ◆ Print or save voting result
- ◆ Sign-in before the voting to improve the security and validity of voting result

- **Seat arrangement** facility includes delegate seating and unit arrangement function modules
  - ◆ Delegate seating is used for assigning delegates' seats, e.g.:
    - Assign a single seat for each delegate
    - Section seating, automatic seat assignment for a group of delegates, supports new assignment – in parts or entirely
    - Clear a single seat if required for a new assignment
  - ◆ Unit arrangement: assign the conference units to the corresponding positions based on the true delegate seating, current cabling and layout:
    - Unit arrangement, assign the conference units to the true delegate seating
    - Delete unit, reassign the units
    - Locate seat position by menu operation
    - Operate the arranged units to check the arrangement
- **Delegate management** includes two sub-modules: delegate information and participants
  - ◆ Delegate information: create and manage the delegate's database
    - Edit delegate information: number, type, name, voting weight, leader (yes or no), presidium (yes or no) etc. Supports individual picture in the database
    - Customer-specific options for above items
    - Supports customized delegate grouping
    - Fast search facility
    - Database updatable
  - ◆ Participants: select the delegates to participate in the conference from the database
    - List delegate information by group or by delegate type
    - Group adding function
  - ◆ Delegate authority:
    - Degree: chairman or delegate
    - Authority: speak, vote and vote board

---

### Ordering Information

HCS-4214/50.....Voting Management Software Module (including delegate management, multiform voting, multi-proposal voting)

## HCS-4221/50 Multi-User Console Module



The primary window of multi-user console

### Functions

If more than one operator is involved, a multi-user console is available for controlling speaking and voting, apart the system application software. A maximum of 5 multi-user consoles can be connected at the same time.

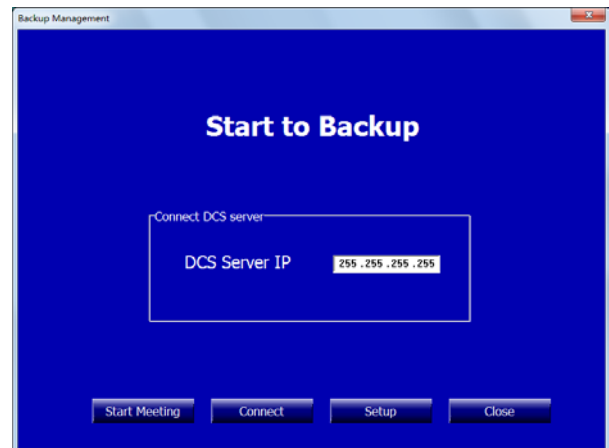
Basic conference control module:

- Microphone control
- Sign-in management
- Voting management
- Intercom
- Seat arrangement
- Proposal information
- Connect Server
- System parameters setup and download venue files from the server

### Ordering Information

HCS-4221/50, Multi-User Conference Control Management Module

## HCS-4222/50 Dual PC Server Hot Spare Module



Start to backup interface



Backing up interface

### Functions

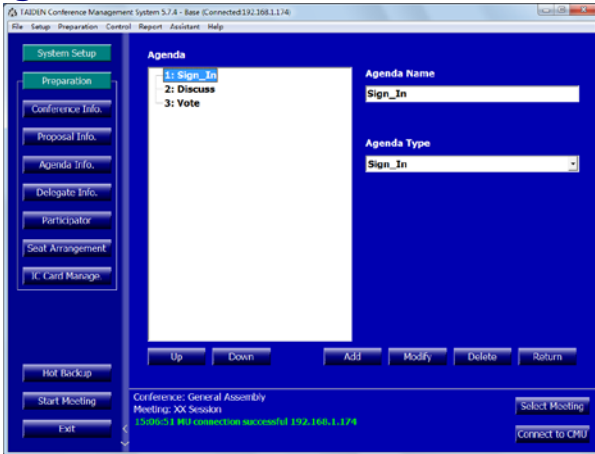
HCS-4222/50 dual PC server hot-spares is a disaster protective structure. If the main operating computer breaks down during a conference, the backup computer immediately substitutes the main computer and continues conference management.

After connection to main operating computer, the backup console application first starts an automatic backup (incl. database and conference related information). If there is any change in the database, the backup console application will update backup automatically.

### Ordering Information

HCS-4222/50.....Dual PC Server Hot Spare Module

## HCS-4223/50 Agenda Control Module



Agenda information



Agenda control

### Functions

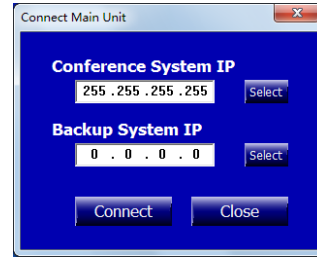
Agenda is a list of meeting activities in the order in which they are to be worked off. The agenda is prepared beforehand. It may include sign-in, voting and discussion. Agenda edit prepares all activities and their sequence to ensure convenience and a well arranged course of events. Agenda Management module consists of agenda information management and agenda control sub modules.

- **Agenda information management:** edit agenda content and sequence
  - ◆ Includes agenda name, agenda type and activity
  - ◆ Sequence of each activity can be adjusted - user can add, modify, delete an activity
- **Agenda control:** control the meeting process according to the pre-defined agenda content and sequence
  - ◆ Select an agenda from the agenda list and execute it
  - ◆ List the status of each agenda
  - ◆ Agenda can be edited, added, modified, or deleted during the meeting

### Ordering Information

HCS-4223/50.....Agenda Control Module

## HCS-4225/50 Dual Conference Main Unit Hot Spare Module



Connect to CMU

### Functions

HCS-4100 dual main unit hot spare is a disaster protective structure. Besides the main unit, user can set another CMU as backup CMU and connect it to the system. If the main unit breaks down during the conference, the backup main unit will substitute the main unit and system software will connect to backup CMU automatically, ensuring consistency of the conference.

### Ordering Information

HCS-4225/50.....Dual System Main Unit Hot Spare Module