

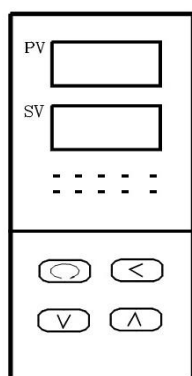
# Oven & Temperature Controller

## Introduction

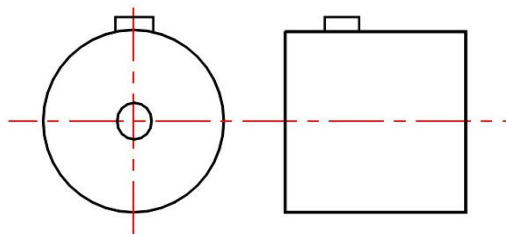
CASTECH provides oven and temperature controller for heating the crystal and controlling its temperature to a certain value.

Table 1. Typical Specifications

Temperature Controller	Oven
<ul style="list-style-type: none"> <li>· Purpose ASIC processor</li> <li>· PID control</li> <li>· Auto tuning</li> <li>· RS-232 interface (optical)</li> <li>· Programmable (optional)</li> <li>· Stability: <math>\pm 0.1\text{ }^{\circ}\text{C}</math></li> <li>· Size: <math>50 \times 100 \times 135\text{ mm}^3</math></li> <li>· Normal Package Standard</li> <li>· Voltage: 110/220V AC, two types</li> </ul>	<ul style="list-style-type: none"> <li>· Design: Radioactive heat compensation</li> <li>· Plane temperature distribution</li> <li>· Fast tuning</li> <li>· Size: <math>\Phi 50\text{ mm} \times 55\text{ mm}</math> (regular) <math>\Phi 25.4\text{ mm} \times 45\text{ mm}</math> (mini)</li> <li>· Cavity size: <math>\Phi 10\text{ mm} \times 55\text{ mm}</math> (regular) <math>\Phi 10\text{ mm} \times 45\text{ mm}</math> (mini)</li> <li>· Sensor: Pt100 thermocouple</li> <li>· Working temperature: <math>40 \sim 180\text{ }^{\circ}\text{C}</math></li> </ul>



Temperature Controller



Oven

## Applications

Heating nonlinear crystals is usually employed in NCPM, OPO, OPA, etc.

## Note

- There are two types of applied voltage on oven, 110 V and 220 V. Please confirm it when order and check it before plug in the power. Burned and other damages, which caused by improper power selection, are not guaranteed to repair.
- Special oven size, holder of crystals and right-angle support setting applications are available upon request.