



# Picture Production and Bitmap Conversion



**GDEW0215T11**

Dalian Good Display Co., Ltd.

## Picture Production and Bitmap Conversion for GDEW0215T11



### 1. Make Picture

This screen supports two colors, black and white, both of which are standard colors. In practice, you can refer to the color chart of the Windows system's built-in drawing software. When creating images, you need to create a  $208 \times 112$  resolution black and white monochrome image and save the image in BMP or jpg format.

#### Conception:

**1.1. Monochrome: black, white** 

**1.2. Three colors: black, white, red/yellow**  ( )

**1.3. Four colors: black, white, red, and yellow** 

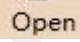
**1.4. Seven colors: black, white, red, yellow, blue, green, orange**

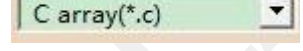


### 2. Bitmap Conversion

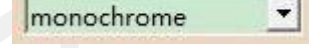
Bitmap conversion can be done using image2LCD software, which can be downloaded from the official website (<https://www.good->


[display.com](http://display.com)) . The interface for setting bitmap conversion parameters is shown in Figure 1:

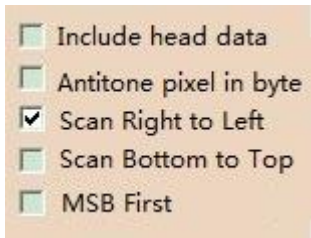
2.1. Open the image2LCD software and click the "Open" button  , Import the image that needs to be converted;

2.2. Output data type: Select "C array (\*.c)"  ;


2.3. Scanning mode: Select "Vertical Scan"  ;

2.4. Output grayscale: Select "Monochrome"  ;

2.5. Maximum width and height: Select "208" and "112", After selection, you need to click the arrow below to confirm  ;

2.6. Select "Scan Right to Left" for these five options  ;

2.7. "Reverse Color" Selection  ;

2.8. Click on 'Save'  , Save the converted array to a file with an extension of ".C";

2.9. Finally, replace the corresponding array in the program with the array in the file ".C".

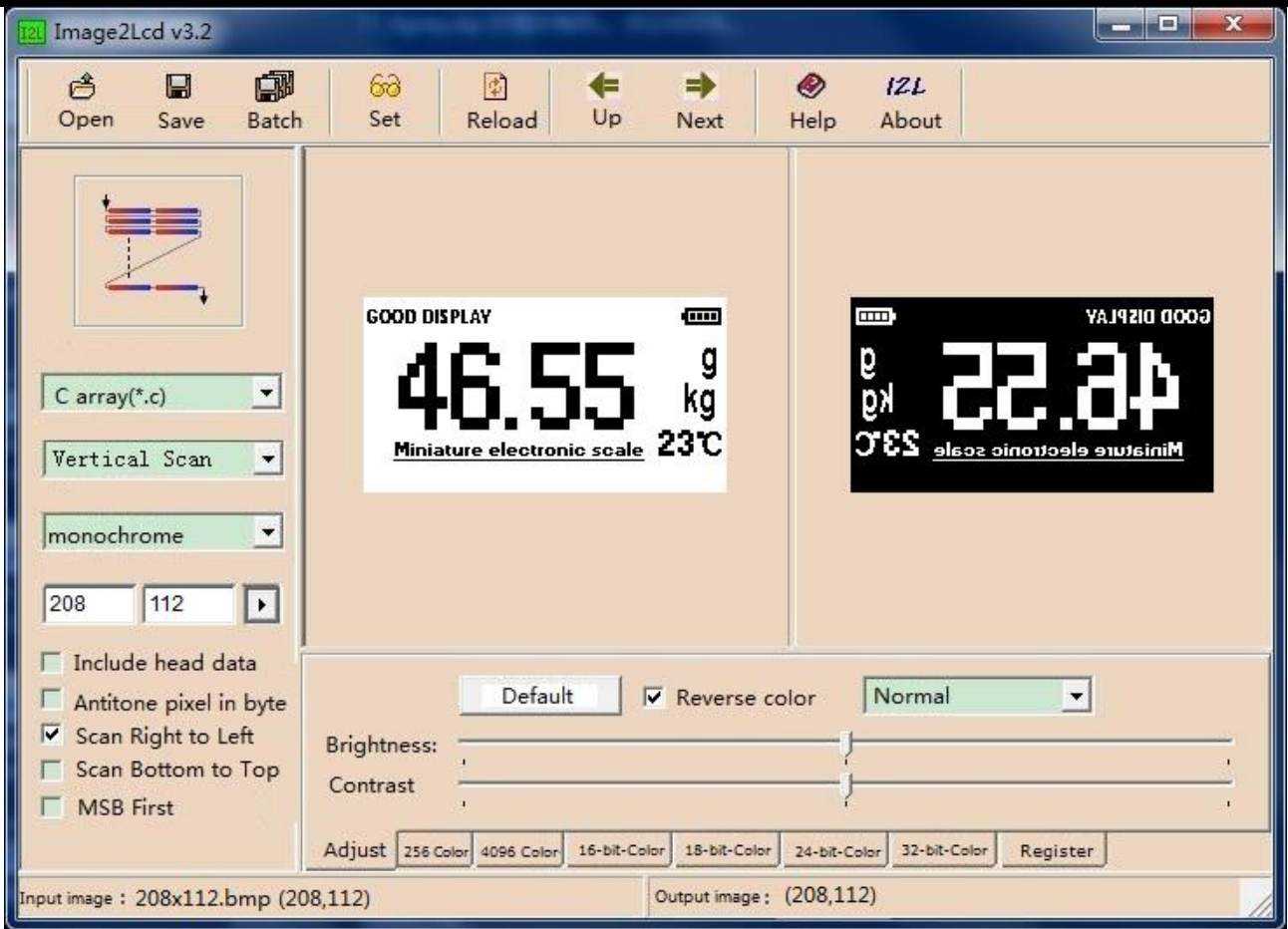


Figure 2,Black and white image settings