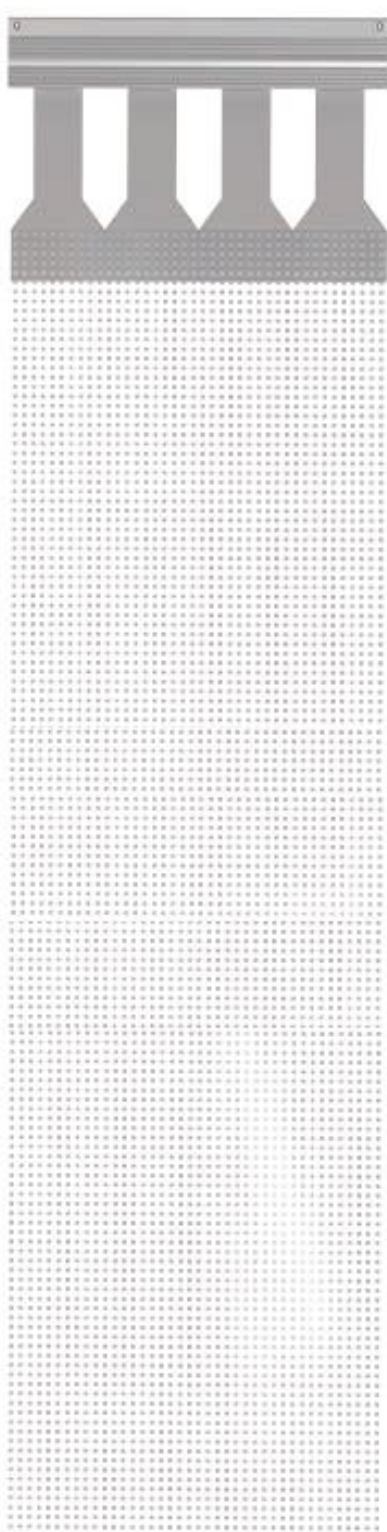
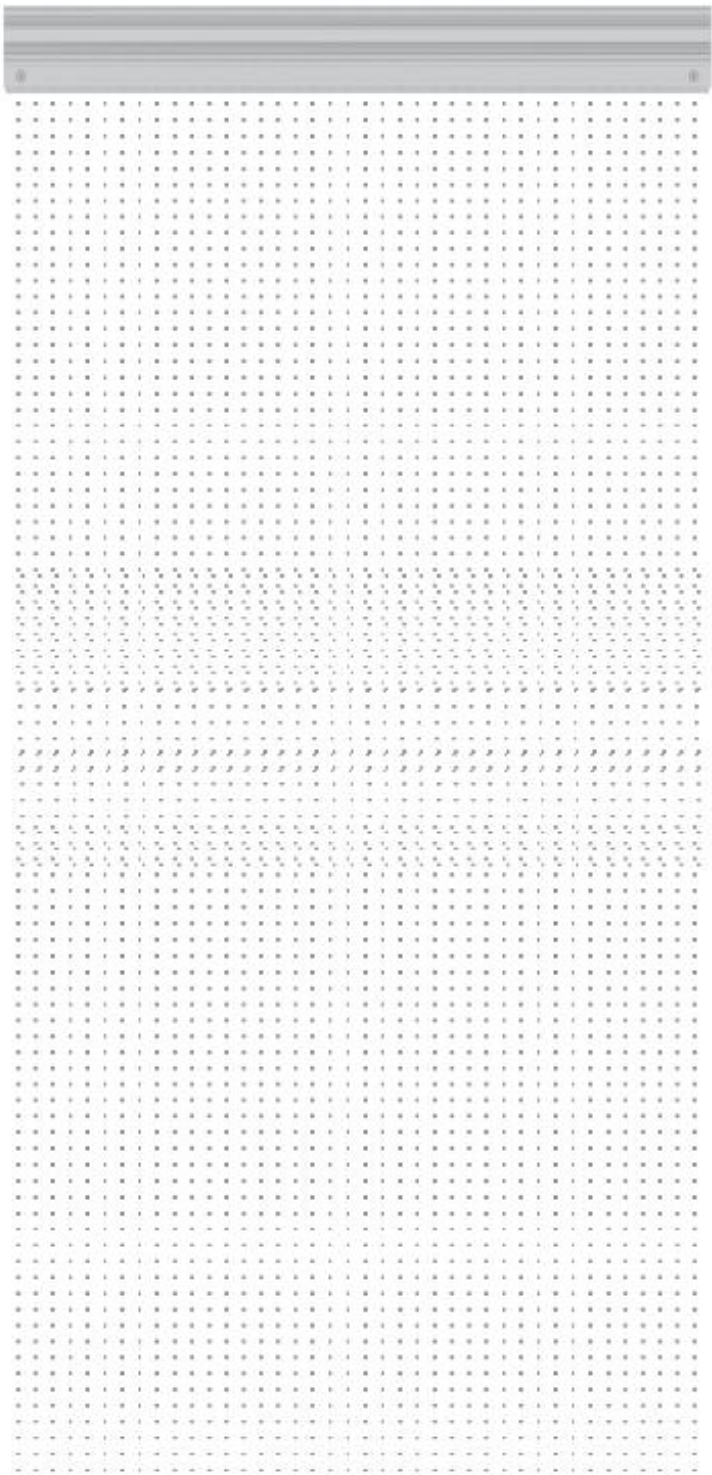




Flexible Transparent LED Film Display P6.25

GDLR0625

DALIAN GOOD DISPLAY CO., LTD.



Product features

LED

light drive in one, independent research and development, high reliability, mini LED device, industry leading

High transmittance

The transmittance is more than 90%, which does not affect the glass daylighting

Easy to install

without steel structure, just stick the thin screen slightly and connect the power signal

AB version

Flexible

for any surface

Light and thin

as thin as 2.5mm, as light as 5kg/m²

UV resistance

5~10 years can ensure no yellowing

Flame retardant

flame retardant grade V1

Product parameter table

REX - P 6 . 2 5

Module size (mm)	1000*400	Peak power	600w/ m ²
LED light	REE1515	Average power	200w/ m ²
Pixel composition	R1G1B1	Work environment	Temperature - 20~55 Humidity 10-90%
Pixel spacing (mm)	6.25*6.25	Weight	1.3kg
Module pixel	160*64=10240	Thickness	2.5mm
Pixel/ m ²	25600	Drive mode	static state
Brightness	2000/4000	Control system	Nova/Colorlight
Permeability	90%	Typical value of life	100000H
Angle of view °	160	Grayscale level	16bit
Input voltage	AC110-240V50/ 60Hz	Refresh rate	3840 Hz

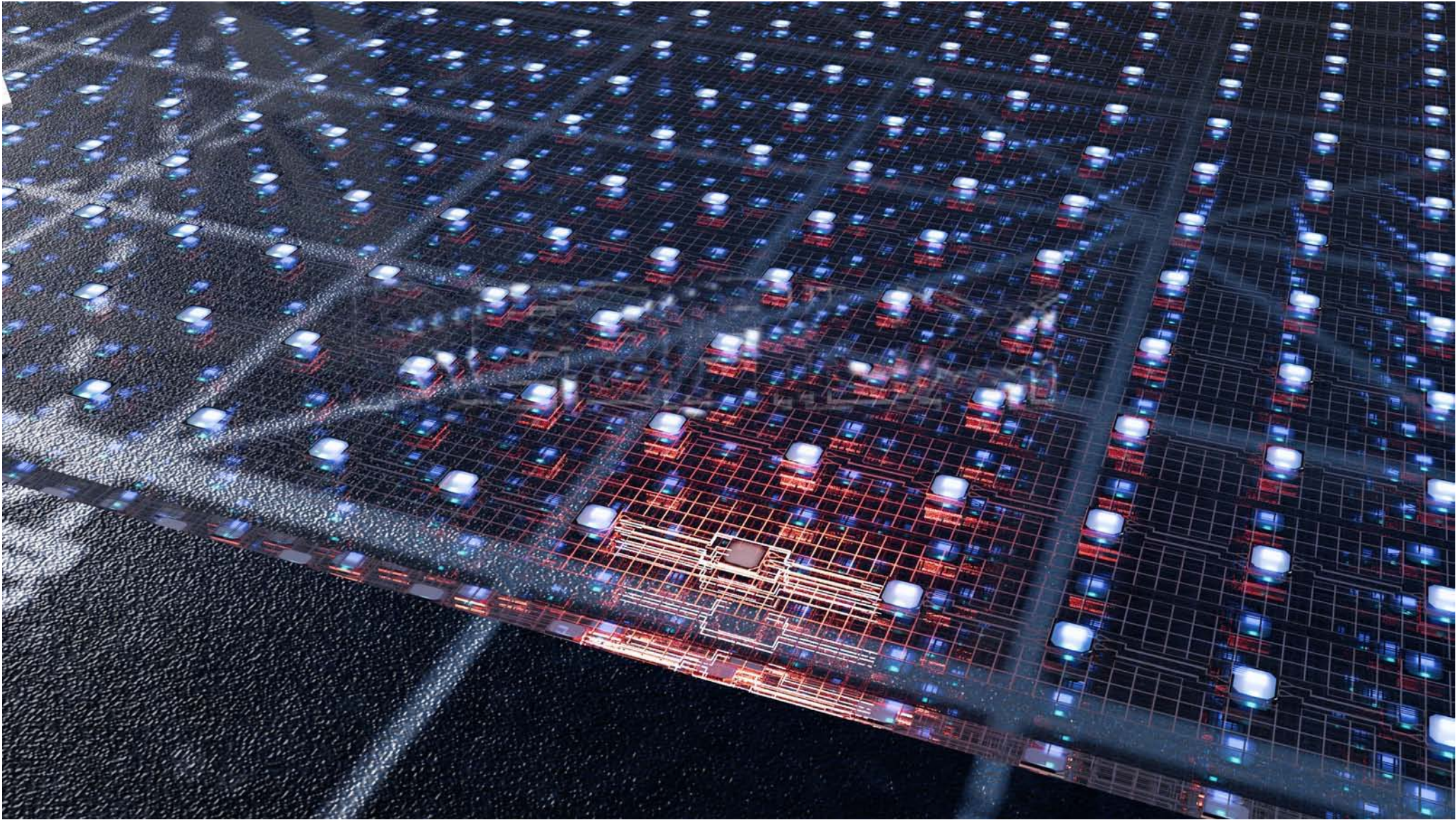
Breakpoint continuation

Stable performance, support two-way Drive drive-in LED,
When a single point of failure, the backup data signal starts automatically, seamless switching, without affecting the display effect.

High reliability

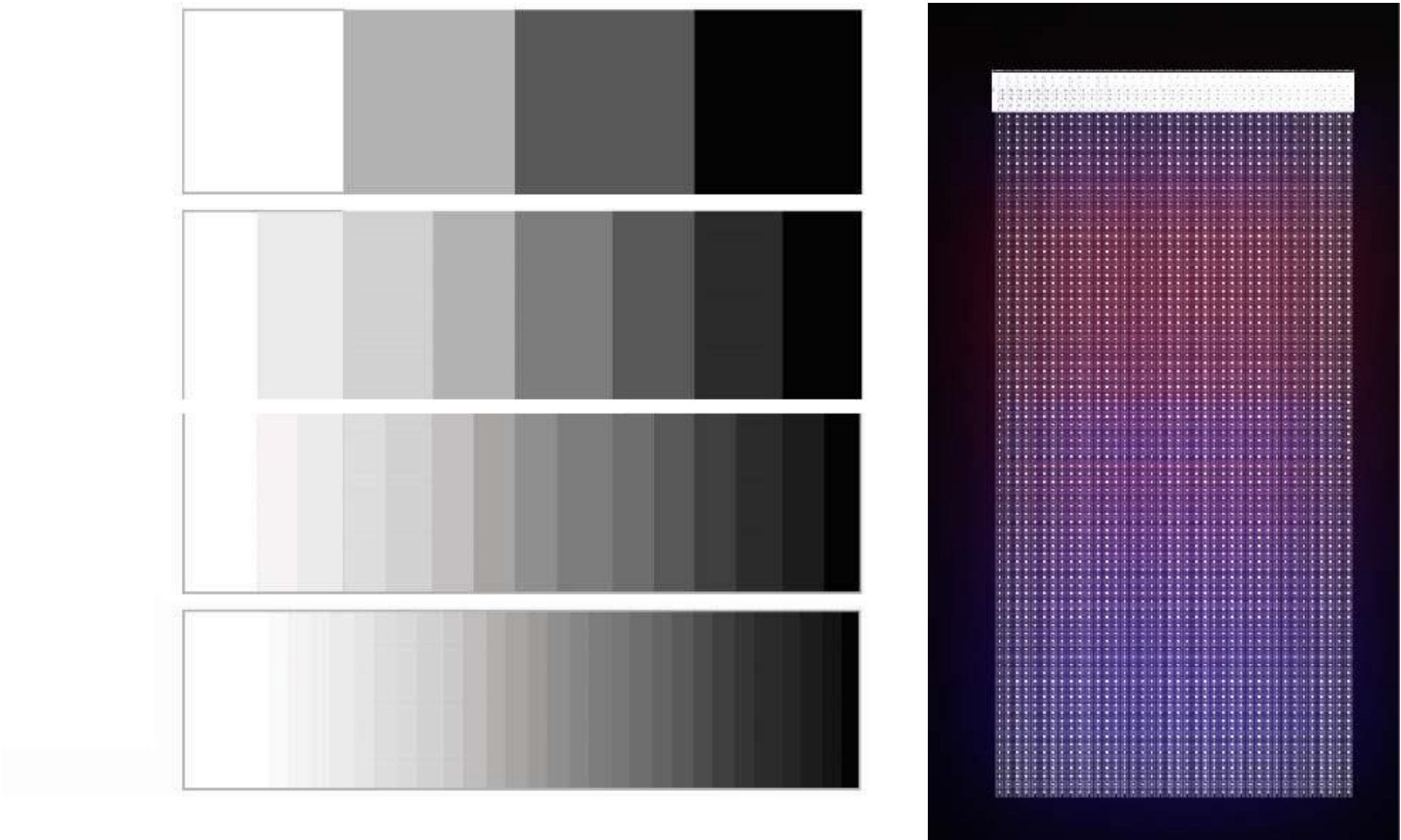
The fault lamp beads should be kept off. If the connection is abnormal (signal, power supply, ground) inside the chip, the lamp beads will be extinguished to avoid the phenomenon of steady on and random flashing.

The lamp bead life is more than 100,000 hours



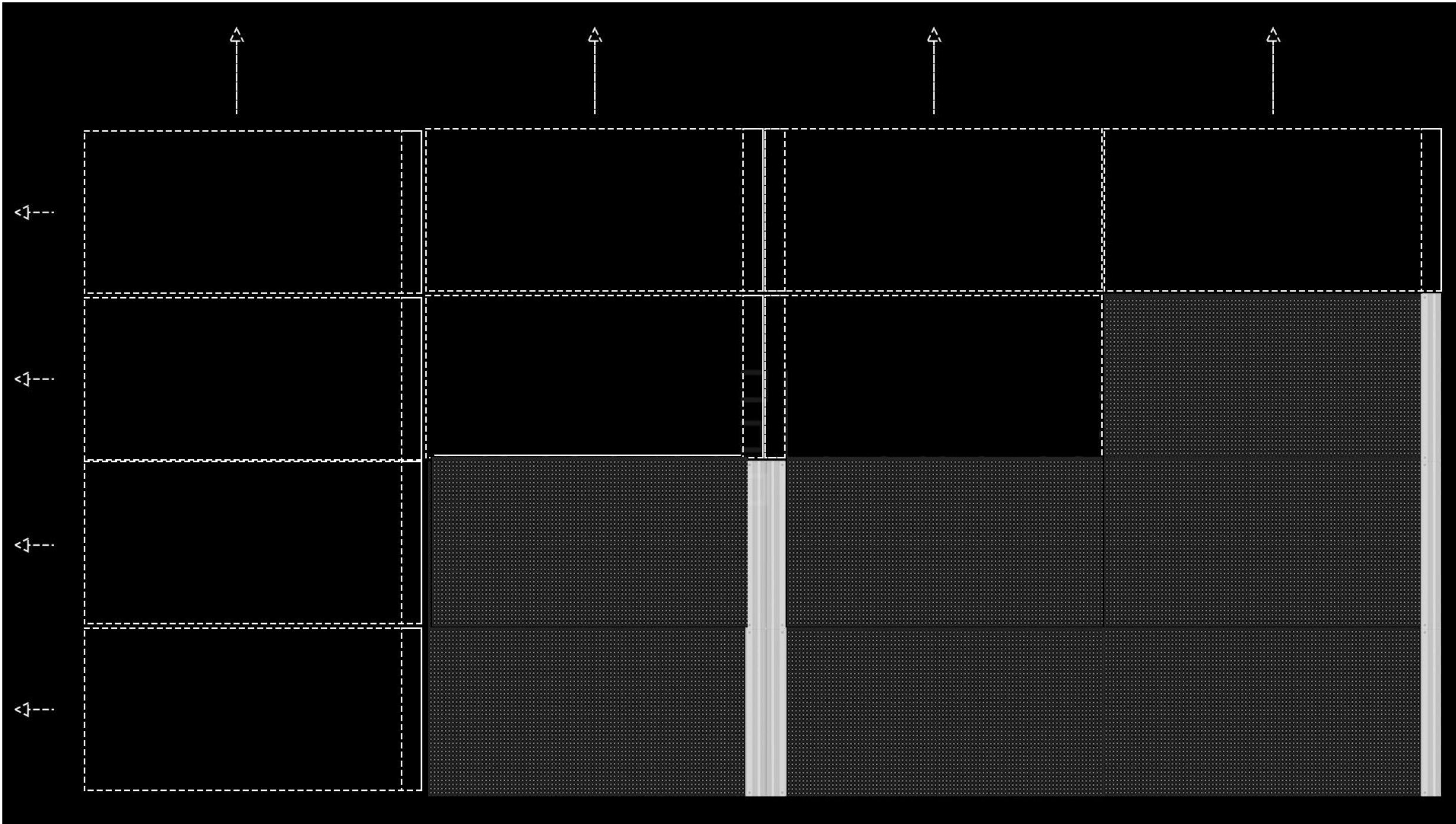
High gray scale display (true 16bit)

RGB channel adopts 32-level current linear regulation, and maintains true 16-bit grayscale display under any current, which is applicable to the consistency of indoor, semi-outdoor and outdoor current requirements;

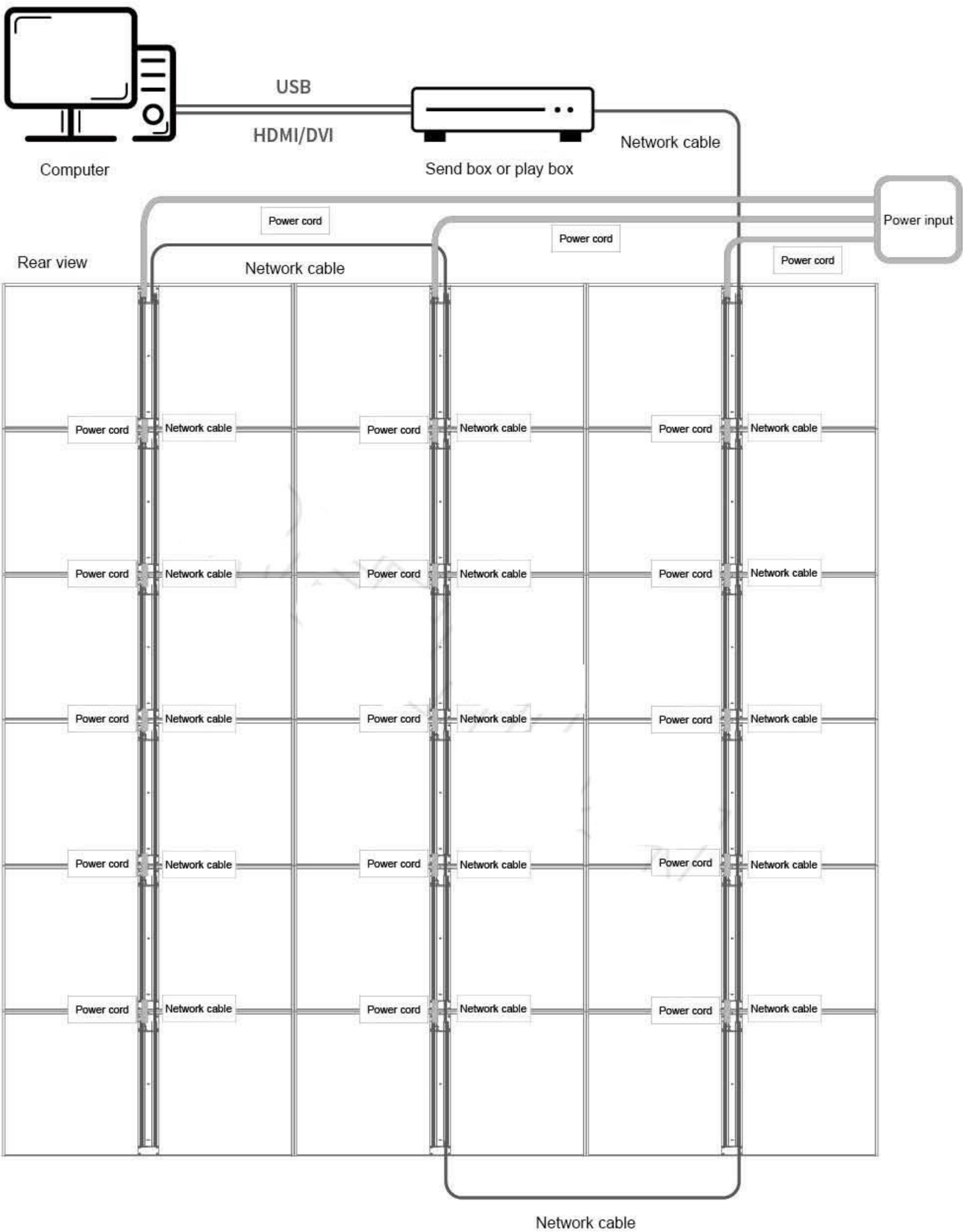


No steel structure is required,
just stick the thin screen slightly
and connect the power signal

Self-developed glue filling process (the screen body with its own viscosity can be directly attached to the glass surface, with strong colloid adsorption, and the viscosity will also increase with the passage of time due to the inherent characteristics of the colloid)



Installation diagram and wiring diagram
(same as asynchronous configuration)

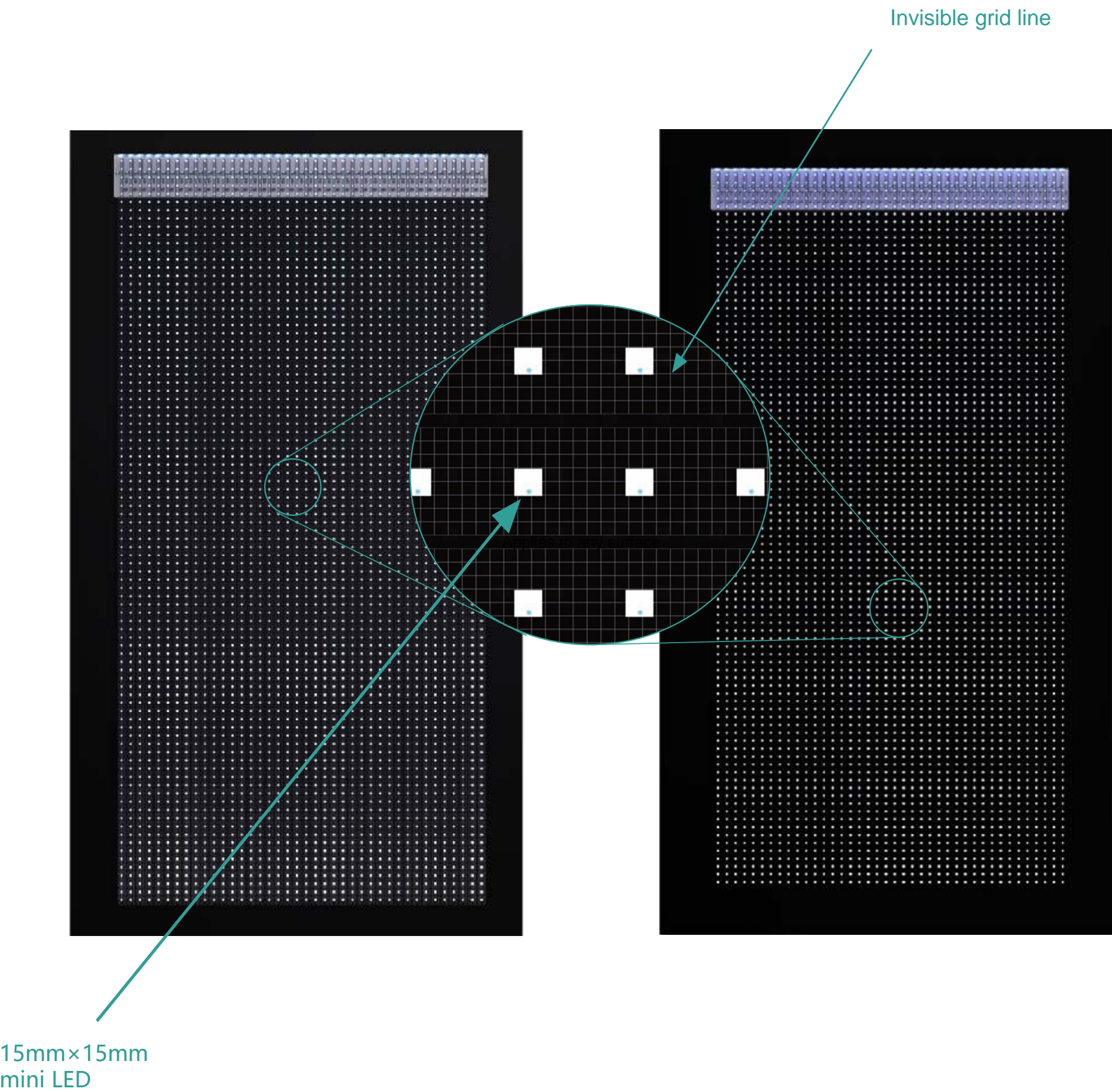


High transmittance

Use the integrated MiniLED lamp beads to improve its own permeability

Use invisible grid circuit to improve its permeability

Patented products
Self-developed chip puts the chip inside the LED beads, simplifying the circuit design and ensuring extremely high permeability.



Flexibility

Flexible design: Made of flexible materials,it can be flexibly bent and curved with a minimum diameter of 6cm, adapting to various curved shapes, such as cylindrical, arc, etc.this gives greater flexibility in design and installation.

