



GDEH042Z96

Bitmap Conversion



GDEH042Z96

Dalian Good Display Co., Ltd.

Picture Production and Bitmap Conversion for GDEH042Z96

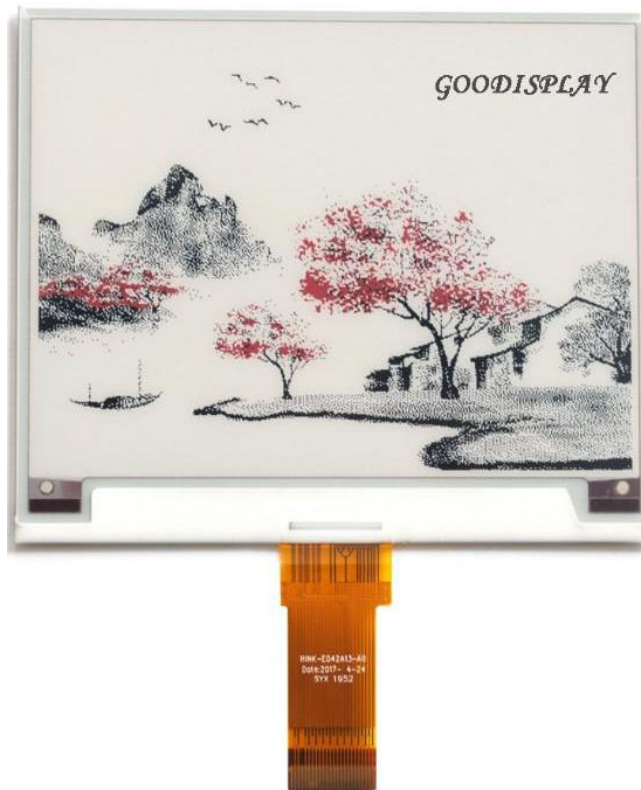


Figure 1

Take Figure 1 for example, we will briefly introduce how to make picture and convert bitmap.

1. How to Make Picture

Separate the picture to be displayed into two 400*300 resolution pictures, one for the black part(the content to be displayed is black) and one for the red part(the content to be displayed is black) , and save them as BMP or JPG files(BMP is recommended).

2. Bitmap Conversion

Open *Image2lcd.exe* in the RAR package. The black and white picture Parameter setting is shown in Figure 2, The red picture mode Parameter setting is shown Figure 3 :

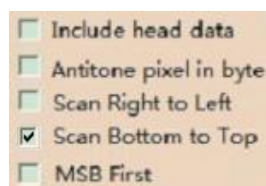
2.1 Open the picture;

2.2 "Output file type": Choose "C array (*.c)";

2.3 "Scan mode": Choose "Horizon Scan";

2.4 "BitsPixel": Choose "monochrome";

2.5 "Max Width and Height": Fill in "400" and "300" and click the arrow to confirm;



2.6 Tick the fourth one;

2.7 "Reverse color": Tick if you don't want to reverse color;

2.8 Click "Save" to save the array as a file of ".c";

2.9 Replace the corresponding array in the program with the array of ".c" file.

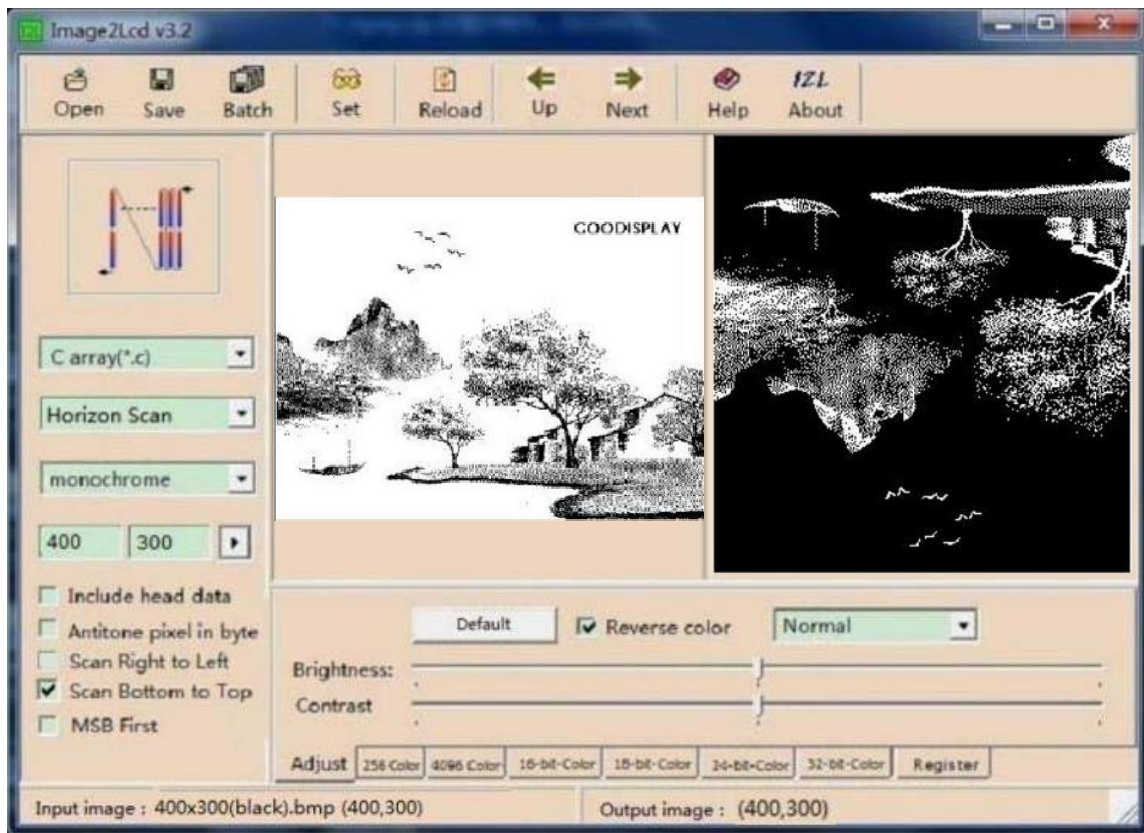


Figure 2

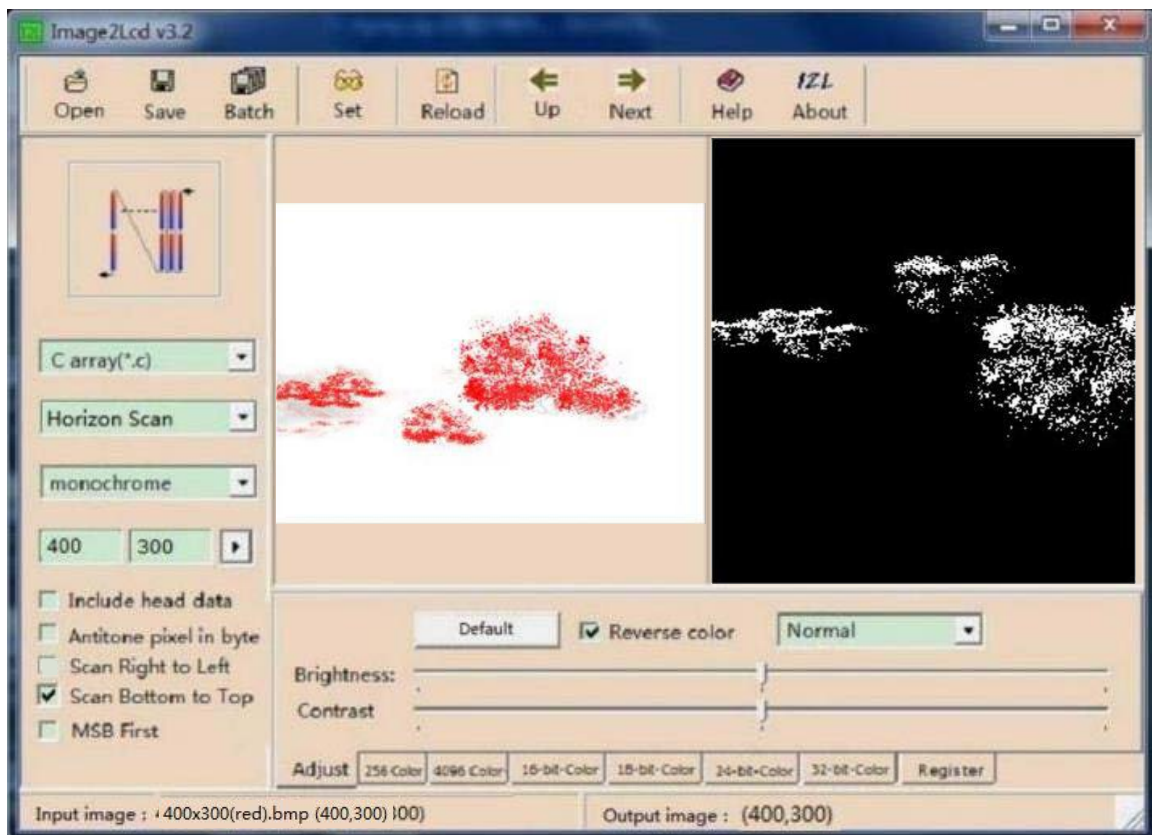


Figure 3