

# SPECIFICATION

Product Type : E-Paper Display Development Kit

Model Number : DESTM32-T

Description : ROHS  
Epaper Display Development Kit  
Drive 4.3&6 inch E-paper display

Prepared : Liu Yubao

Checked : Duan Junqiang

Approved : Ren Bo

Issue Date : 2017.11.21



*Good Display*

**DALIAN GOOD DISPLAY CO., LTD.**

No.17 Gonghua Street, Shahekou District, Dalian 116021 China

Tel: +86-411-84619565 Fax: +86-411-84619585-810

Email: [info@good-display.com](mailto:info@good-display.com)

Website: [www.good-display.com](http://www.good-display.com)



## Revision History

Rev.	Issued Date	Revised Contents
1.0	Nov.01.2017	Preliminary
1.1	Nov.21.2017	Updating

GOOD DISPLAY



## DESTM32-T Specification

### 1. Over view

This Development Kit which designed for Parallel E-paper Display aims to help users to learn how to use E-paper Display more easily. It can refresh 4.3 inch and 6 inch E-paper display. And it is also added the function of USB serial port for In-Circuit Debugging.

DESTM32-T consist of two parts: Main Board DESTM32-L1-11 and Adapter Board DESTM32-Tcon-11.

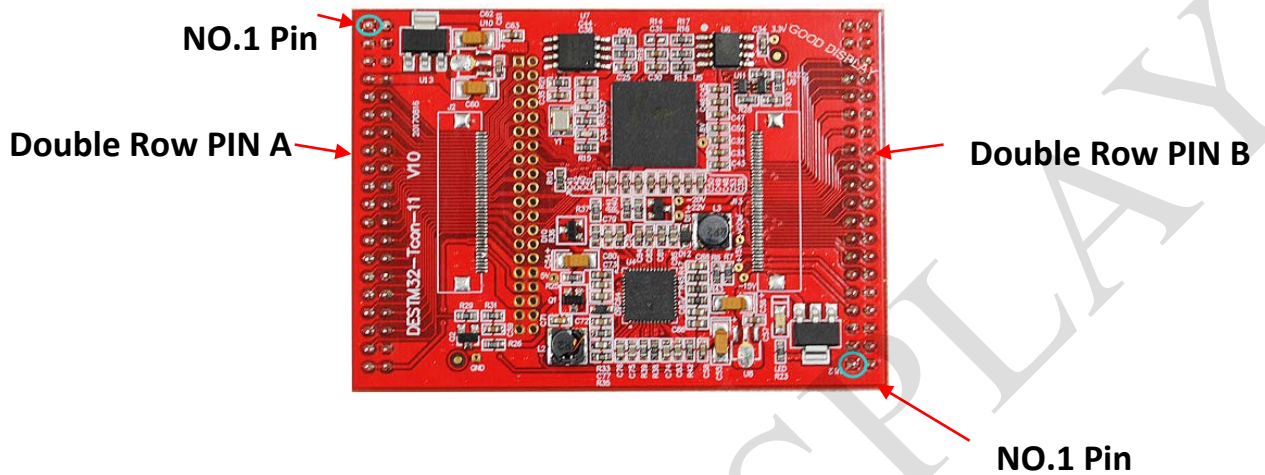
### 2. Mechanical

#### Specification

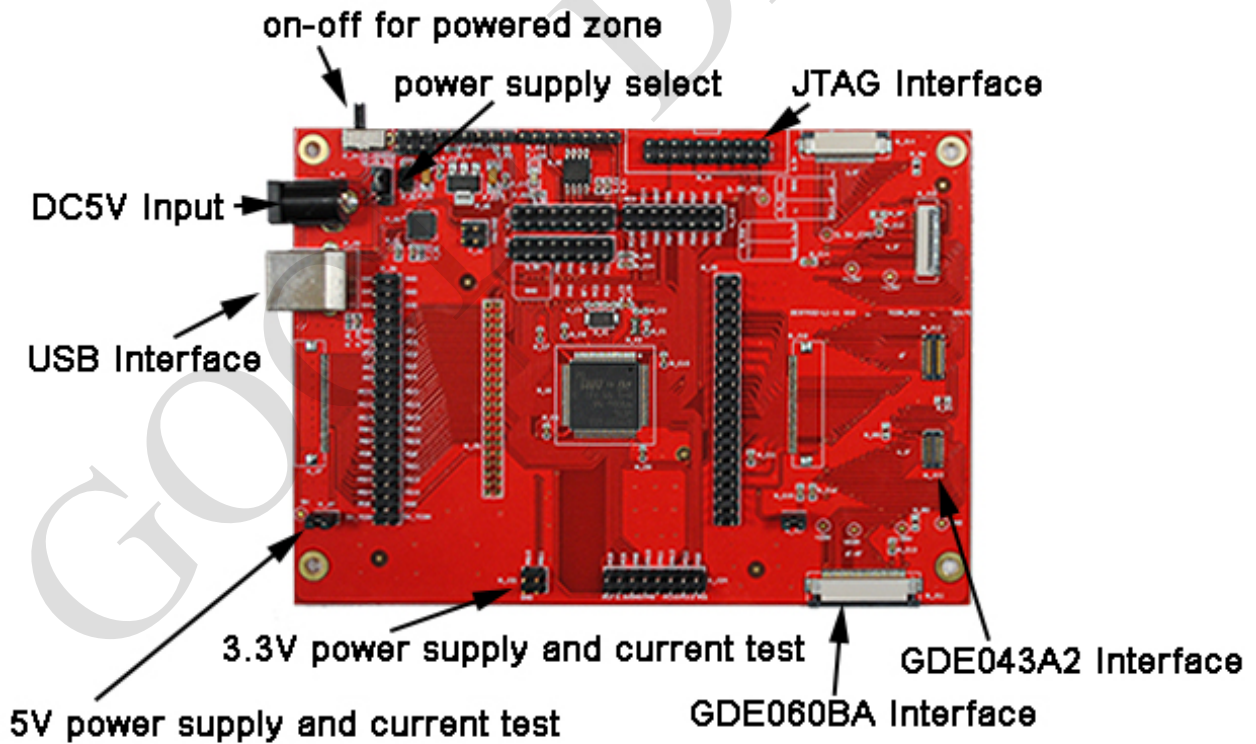
Parameter	Specification
Model	DESTM32-T
MCU	STM32
Dimension	Main Board: 137mmX97mmX1.6mm (DESTM32-L1-11) Adapter Board: 76mmX54mmX1.6mm (DESTM32-Tcon-11)
Input Voltage	5V
Interface	USB
Sample Code	Available(Please contact sales)
Working Temperature	-20~70°C
Main Function	Driving E-paper Display
Additional Function	USB to serial port

### 3. Main Functions

**DESTM32-Tcon-11**



**DESTM32-L1-11**



### 3.1 DESTM32-Tcon-11 Double Row Pin Description

#### 1) Function of Double Row PIN A :

J14

GND	1	2	GND
GND	3	4	GND
GND	5	6	GND
VCC_3V3	7	8	VCC_3V3
HDB0_AVT6203A	9	10	HDB1_AVT6203A
HDB2_AVT6203A	11	12	HDB3_AVT6203A
HDB4_AVT6203A	13	14	HDB5_AVT6203A
HDB6_AVT6203A	15	16	HDB7_AVT6203A
HDB8_AVT6203A	17	18	HDB9_AVT6203A
HDB10_AVT6203A	19	20	HDB11_AVT6203A
HDB12_AVT6203A	21	22	HDB13_AVT6203A
HDB14_AVT6203A	23	24	HDB15_AVT6203A
PWR0_TPS65185	25	26	PWRCOM_TPS65185
PWM_SDA_TPS65185	27	28	PWM_SCL_TPS65185
HRD_AVT6203A	29	30	5_HDC_AVT6203A
HRDY_AVT6203A	31	32	RESET_AVT6203A
HWE_AVT6203A	33	34	HCS_AVT6203A
HRQ_AVT6203A	35	36	WAKEUP_TPS65185
SYSWAKEUP	37	38	GND
VIN_5V	39	40	VIN_5V

#### 2) Function of Double Row PIN B :

J1

GND	39	40	GND
GND	37	38	GND
VBORDER_AVT6203A	35	36	GND
GDSP_AVT6203A	33	34	GDCLK_AVT6203A
GDOE_AVT6203A	31	32	GDRL_AVT6203A
VEE_TPS65185	29	30	GND
VDDH_TPS65185	27	28	GND
VCOM_TPS65185	25	26	GND
SDDO6_AVT6203A	23	24	SDDO7_AVT6203A
SDDO4_AVT6203A	21	22	SDDO5_AVT6203A
SDDO2_AVT6203A	19	20	SDDO3_AVT6203A
SDDO0_AVT6203A	17	18	SDDO1_AVT6203A
SDSHR_AVT6203A	15	16	SDSP_AVT6203A
SDLE_AVT6203A	13	14	SDOE_AVT6203A
VCC_3V3	11	12	SDCLK_AVT6203
VPOS_TPS65185	9	10	A_GND
VNEG_TPS65185	7	8	GND
GND	5	6	GND
GND	3	4	GND
GND	1	2	GND

### 3.2 Model Description:

- 1) Power Supply: Input voltage of DESTM32-T is DC5V. Choose DC5V power input through a short circuit to P\_J2.

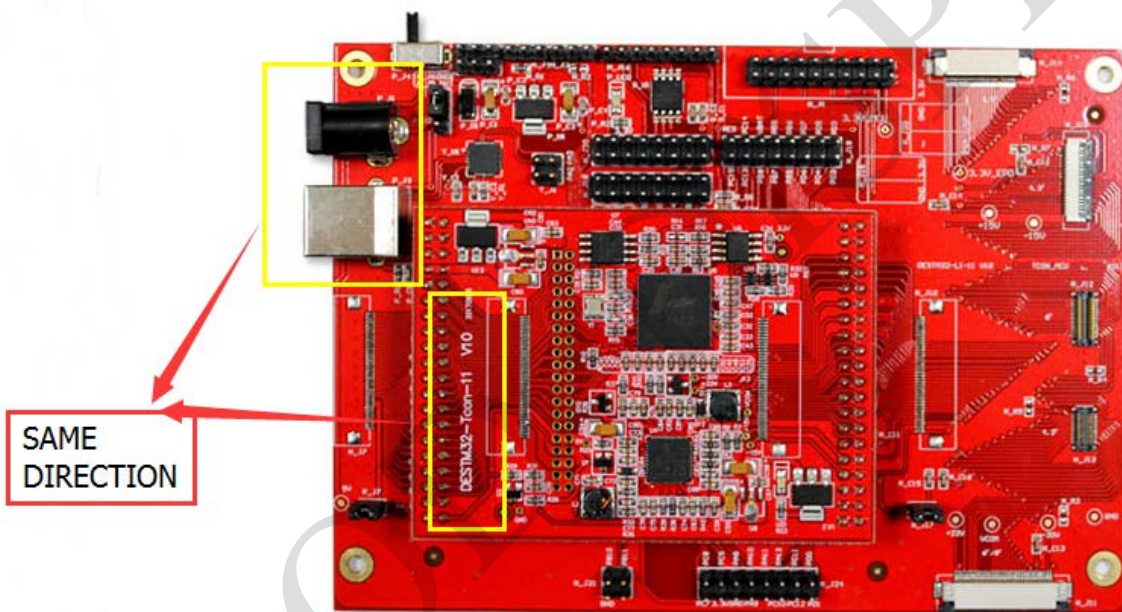


It doesn't support USB power input for now.

2) Other Power Supply: Connecting power supply pin of 3.3V and 5V with JUMP LINE HAT separately. It also can support current test of 3.3V and 5V. Only need two Dupont Lines connect the Ampere Meter with power supply.

### 3.3 Installation Instructions

Screen printing of DESTM32-Tcon-11 and power supply port of DESTM32-L1-11 must be the same direction.





2) This Development Kit drives 6 inch e-paper display by default. If you want to drive 4.3 inch e-paper display , you need restart macro definition "#define GDE043A2 " which inside file "epd.h" of demo code.

```
]}#ifndef __EPD_H
#define __EPD_H

#include "stm32f10x.h"

// #define GDE043A2

#define EPD_WF_ADDR (0x3000) // waveform is located at initial position of SPI FLASH
#define EPD_IMG_ADDR (0x200000) // send image data to initial position of RAM
```