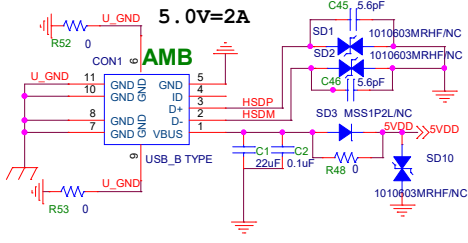
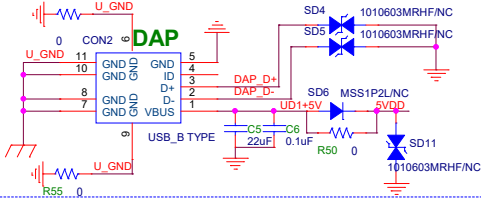


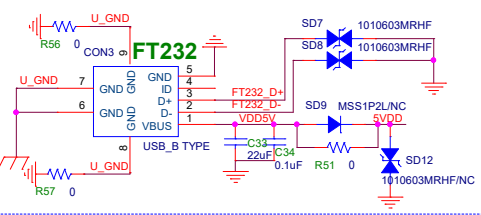
VBUS USB 1 INPUT(Device for Ameba)



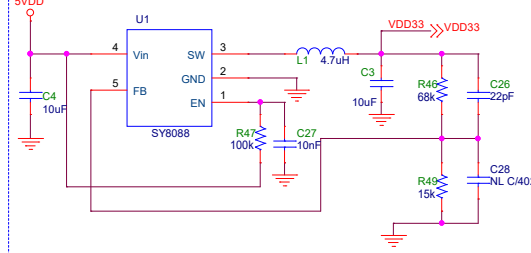
VBUS USB 2 INPUT(Device for DAP)



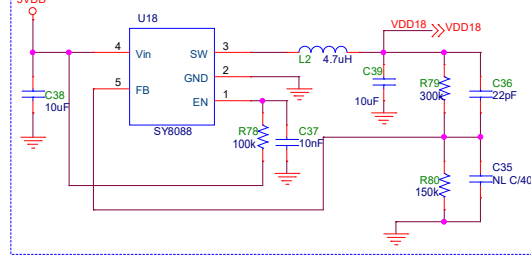
VBUS USB 3 INPUT(Device for FT232RQ)



+5V --> +3.3V



+5V --> +1.8V



Power indicator

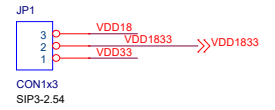


HSDR \ HSDP
HSDM \ HSDM

DAP_D+ \ DAP_D+
DAP_D- \ DAP_D-

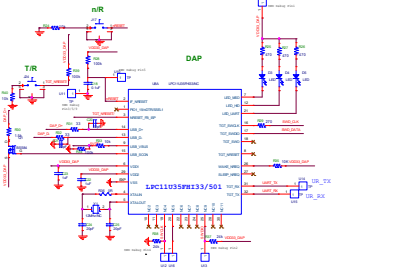
FT232_D+ \ FT232_D+
FT232_D- \ FT232_D-

UD1+5V \ UD1+5V

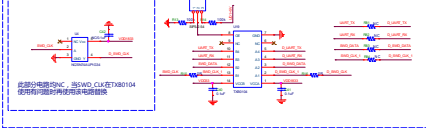


Title			
ARMEBA_MB			
Size	Document Number	Rev	
Custpm	DC Power	1.0	
Date:		Sheet	1 of 2

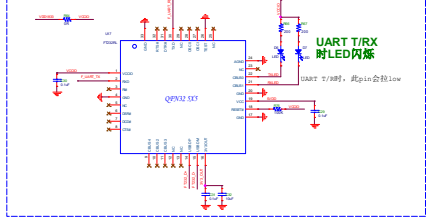
**DAP QFN32 5X5
USB to UART & SWD**



<Level Shift Control OE>



**FT232RL QFN32 5X5
USB to UART**



GPIO GROUP & Function-Mux

Complete Pin-Mux Table pls Check Datasheet of Relative Chip

POWER PA21-2: UART

```

VDD1_002/SPI0_CS/LCD_D0/IR04/HS_UART0_RXD
VDD1_007/LCD_D1
VDD1_008/HS_UART0_TXD
HS_UART0_RXD
HS_UART0_TXD/PWM6/LCD_D0
VDD1B33
HS_US1_UART_X02/PWM6/LCD_D3
VDD1B33
GND
GND
GND
GND/PWM6/LCD_D5/HS_US1_SPI_CS/PWM6/HS_US1_SPI_CLK
    
```

**DIGITAL PB8-B: SWD
PB10-11: SPI**

```

UART_TX0_RX0
UART_TX0_RX0/IR0_0
SD_CS/TMIC_DATA/HS_US1_L2C_SDA
VDD1B33
HS_US0/LCD_VSYNC_TX/SPI_DATA0/I2S_CLK/HS_UART0_CTS/LED_I0/PWM2/HS_US1_UART_TXD
SD_CS/PWM6_DATA/LCD_D1/SPI_DATA1/I2S_CLK/HS_UART0_RXD
SD_CS/PWM6_CLK/LCD_D14/SPI_CS/HS_UART0_RXD
SD_CS/HS_US0_TX0/HS_US0_TX1/HS_US0_TX2/HS_US0_TX3/HS_US0_TX4/HS_US0_TX5/HS_US0_TX6/HS_US0_TX7/HS_US0_TX8/HS_US0_TX9/HS_US0_TX10/HS_US0_TX11/PWM13/HS_US1_UART_RXD
SD_US1_HS_US1_TXD/HS_US1_UART0_TXD/HS_US1_DATA2/SPI_DATA2/PWM5
SD_US1_HS_US1_RXD/HS_US1_UART0_RXD/SPI_DATA3/SPI_DATA3/PWM6/I2S_CTS
    
```

**DIGITAL PB4: ADC
PA20: KEY**

```

TOUCH_KEY0/I0_OVS/LED8
TOUCH_KEY1/LP_I2C_SCL
TOUCH_KEY1/LP_I2C_SDA
TOUCH_KEY1/IR04/UART_LOG_TXD
HS04/PWM6/LCD_D6/HS_US1_SPI_MISO/KEY_CS0/LP_UART_TX0/LP_I2C_SDA
HS04/PWM4/LCD_D7/HS_US1_SPI_MOSI/KEY_CS1/LP_UART_RX0/LP_I2C_SCL
    
```

DIGITAL PB1-2: UART

```

ADOUTP_M/SPI0/LED12/FRM_P/I2S_CLK
ADOUTP_M/SPI0_X6/LCD_CS
ADOUTP_M/SPI0_M4/HS_US0
ADOUTP_M/SPI0_P1/HS_US0
ADC_CLK/ADC_CH0
ADOUTP_M/SPI0_UART_TX0/HS06/TMIC_CLK/
ADC_CH0/LP_UART_X02/SPI0/LED7/TMIC_DATA/UART_LOG_RXD
    
```

The Interface of Function Extension

