

TIME100 Series

VALUED VIDEO BORESCOPE

Features

- 720P ultra clear image display
- Flexible selection of thick and thin pipelines
- Rocker 360° precision steering
- 8 hours of super work time



Technical Specifications

| | Model | TIME100 Series | |
|--------------|--------------------------|---|------|
| Cable System | Probe Dia (mm) | Φ3.9 | Φ6.0 |
| | Camera Pixel | 1000,000 | |
| | Depth of field (mm) | 10-100mm | |
| | Field of view | 120° | |
| | Light | LED | |
| | Illuminance | Max 20000Lx | |
| | Length of Cable | 1.5m (Customizable) | |
| | Durable device | 42mm buffer protection for insertion tube and handle connection | |
| | Bending Direction | 360° | |
| | Bending Degree | Max 190° (5m cable 150°) | |
| | Probe Positioning | Automatic positioning with damping (optional fastening locking device) | |
| Host System | Display | 3.5 inch color TFT LCD | |
| | Picture Resolution | 1280×720 | |
| | Language | Chinese, English, Russian and others. Eight languages are available | |
| | Shell structure material | Anti-fall engineering materials | |
| | Waterproof, dustproof | Probe, objective lens and pipeline can withstand IP67 waterproof | |
| | Machine structure | Handheld integrated host | |
| | Photo/video file format | JPEG/MOV | |
| | Data interface | HDMI video output interface, Micro USB port | |
| | Working Time | ≥8 hours, built-in power supply up to 8 hours | |
| | Battery capacity | Double group 3.7V, 3200mAh×2 | |
| | Charging | DC5V, max 1A | |
| | Weight | 0.55Kg~0.8Kg | |
| | Compatibility | replaceable/upgraded mainframe, compatible with insertion tubes of different diameters | |
| Parts | Storage | Capacity 8G TF card (maximum support 32G) | |
| | Power | Removable rechargeable lithium battery (optional with built-in rechargeable lithium battery) | |
| | Standard Delivery | Instrument box, endoscope, rechargeable battery, card reader, memory card, data cable, charger, manual, certificate | |

Smart Main Unit

HD

Photo and video 720P, 1 million pixels optional; the image is super clear and the image resolution is up to 1280*720; support HD video recording.



Output

Image can be output to HD display via HDMI lossless.



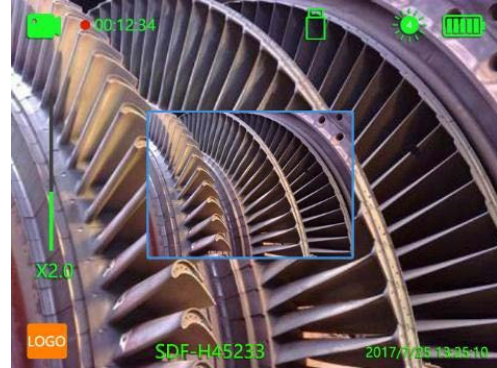
Display

Display, pipeline independent module design, smarter and more convenient operation.



Record

During the recording process, one click to capture. Both the video and the photo are saved, and the image is recorded in real time.



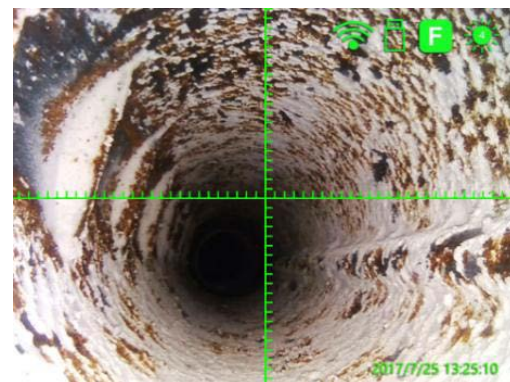
Zooming

Preview images support real-time scaling, making detection of defects more intuitive.



Ruler

Defect size comparison measurement, cross scale display, call at any time, more accurate detection of defect detection.



Multi Functional Pipeline System

Steering

360° omnidirectional steering, damped positioning design, and precise probe locking technology make detection more accurate and efficient.



Wear

The pipeline is made of tungsten wire and has 5 layers, thus the wear resistance is 20+ times that of ordinary pipelines.



Light

Ultra-bright ceramic LED with luminance up to 20,000Lx



Bend

The maximum bending angle is up to 190°



Change

Compatible with 3.9mm and 6mm diameter pipelines. Front view, side view or both available.



Battery

Unique dual batteries design; continuous working ≥8 hours; real-time power indicator



Applications

Aerospace, automobile manufacturing, automotive aftermarket, police safety, energy and power, military manufacturing, special inspection systems, petrochemicals, food medicine machines, machine casting, rail transportation, municipal pipelines, etc.

