

SMB Type Core

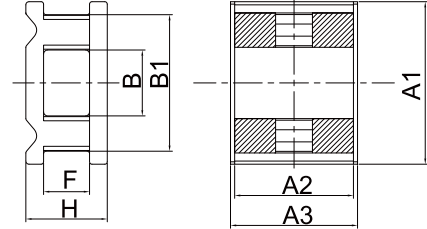
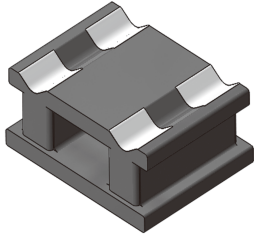
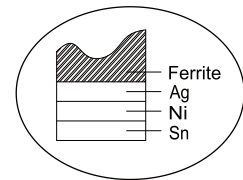
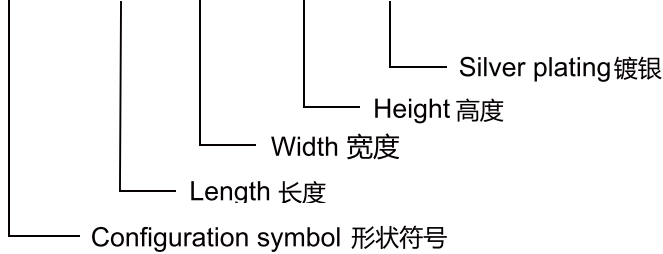


Fig1

Identification:

SMB - A - B1 - C - S



端银电镀图示
Graphical representation

Dimensions

Part No.	Item	Dimensions								Fig
		A1	A2	A3	H	B1	B	F		
SMB-4.5-3.2-1.8S		4.50±0.2	3.20±0.2	2.60±0.2	1.80±0.15	3.10±0.15	0.50±0.1	1.50±0.1		1
SMB-5.0-8.5-5.0S		5.00±0.2	8.50±0.2	7.90±0.2	5.00±0.15	3.90±0.15	2.60±0.1	1.70±0.1		1
SMB-7.5-6.0-3.0S		7.50±0.2	6.00±0.2	5.30±0.2	3.00±0.15	6.10±0.15	1.70±0.15	3.00±0.15		1
SMB-10-8.0-5.0S		10.0±0.2	8.00±0.2	7.00±0.2	5.00±0.15	8.30±0.15	4.00±0.15	2.80±0.15		1
SMB-12-10-4.6S		12.0±0.2	10.0±0.2	8.50±0.2	4.60±0.15	9.80±0.15	1.80±0.15	3.00±0.15		1
SMB-12-10-6.0S		12.0±0.2	10.0±0.2	8.50±0.2	6.00±0.15	10.2±0.15	3.20±0.15	4.30±0.15		1